



# CADAVER TRAYS

## CADAVER TRAYS

|   |    |
|---|----|
| Carrier Chassis Tray.....                             | 2  |
| Carrier Chassis Tray with X-Ray Slide Guides .....    | 3  |
| Fiberglass Tray, & optional X-Rays Slide Guides ..... | 4  |
| Stainless Steel Autopsy Tray .....                    | 5  |
| Stainless Steel Autopsy Tray w/ Trough.....           | 6  |
| Standard Body Tray .....                              | 7  |
| Body Storage Board / Flat Storage Tray .....          | 8  |
| Plastic Transfer Board.....                           | 9  |
| Optional Features .....                               | 10 |

# CADAVER TRAYS

## STANDARD DESIGN FEATURES

Length: ..... 82 in./208 cm.  
Height: ..... 3.625 in./9 cm.  
Width: ..... 31 in./78 cm.  
Color: ..... Beige  
Design load: ..... 500 lbs./227 kg.

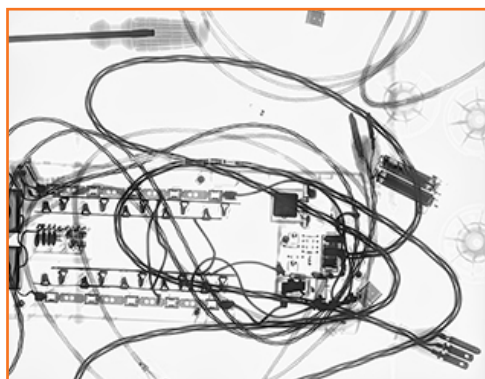
The hi-tech molded fire retardant plastic operating platform is shaped to fit the subframe of the carrier chassis. A real time and energy saver, the detachable hi-tech plastic top will ensure a secure fit with no mechanical fastening devices required. The top of the platform is formed with ribs to promote drainage to the gutters. X-rays can also be taken without the removing the cadaver from the autopsy table. A reinforced structure on the bottom enables easy mobility from rack to chassis through use of a cadaver lift.

Will combine with the following carriers:

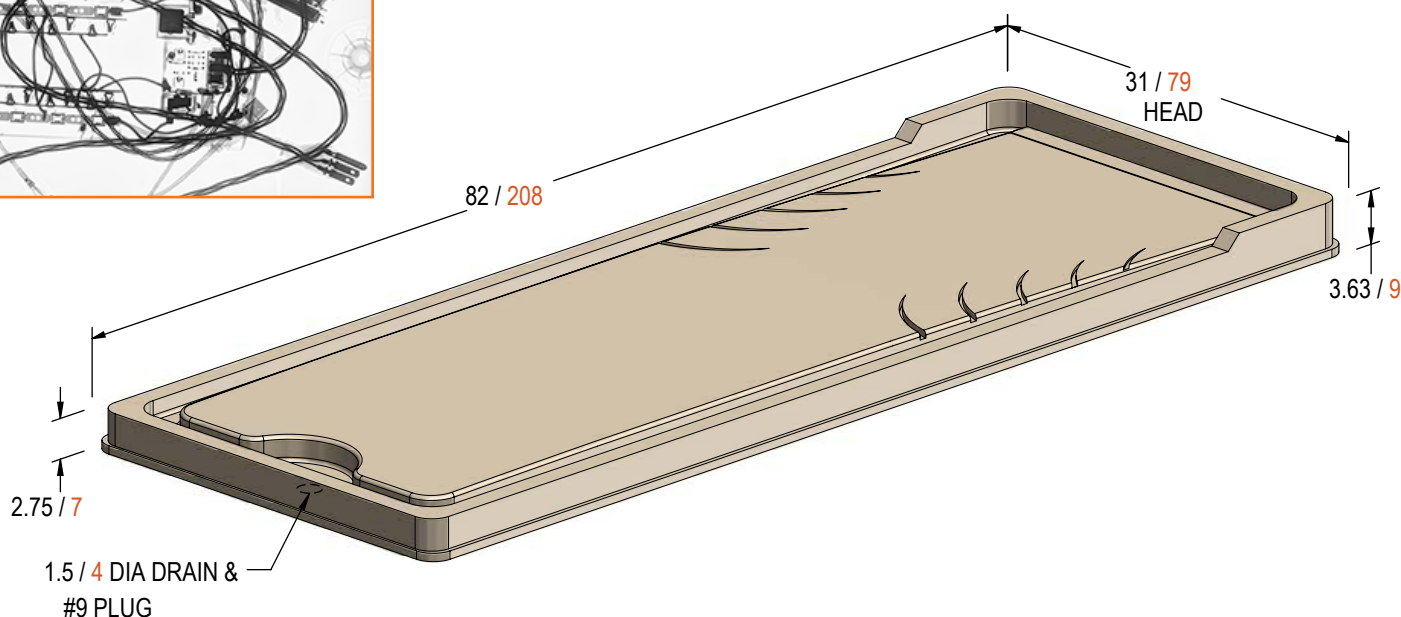
600000 ..... Carrier Chassis Series  
600011 .. C-arm Accessible Autopsy Carrier  
600014 . C-arm Accessible Autopsy Carrier  
600017 ..... Autopsy Carrier Series  
7002..... Cantilever Storage Rack Series  
7005..... Mobile Mortuary Rack Series  
7020-03 ..... Two Tier Storage Carrier

## Optional Accessories

- Drain adapter assembly M764 w/lab stopper 5.5
- Drain hose w/hose clamp (Sold in foot increments)
- Laboratory stopper #9 for use w/o adapter



## MOLDED PLASTIC CARRIER CHASSIS MODEL T3603



All measurements in inches/centimeters +-

# T3606

## STANDARD DESIGN FEATURES

Length: ..... 82 in./208 cm.  
 Height w/o x-ray cartridge: ..... 2.375 in./6 cm.  
 Height w/ x-ray cartridge: ..... 3.375 in./8 cm.  
 Width: ..... 24, 30, 32 in./60, 76, 81 cm.  
 Color: ..... White  
 Design load: ..... 500 lbs./227 kg.

## Model T3606-D24 (No Ribs, No X-Ray Slides)

Available only in 24 in. x 78 in./61 cm. x 198 cm.

The fiberglass platform is designed for use on an autopsy carrier or various racking system. When a proper carrier is used, X-rays may be performed without the removal of the cadaver from the autopsy table.

OPTIONAL X-RAY  
CARTRIDGE SHOW

## Model T3606-D30 (W/Ribs) Model T3606-D32 (W/Ribs)

The fiberglass platform is designed for use on an autopsy carrier or various racking system. The top of the platform is formed with ribs for easy drainage. When a proper carrier is used, x-rays may be performed without the removing the cadaver from the autopsy table. A reinforced structure on the bottom enables easy mobility by forklift or floor lift.

Will combine with and appropriate for the following Carriers:

600018 .....Series Carrier for T3606  
 600038 .....Series Carrier for T3606  
 7002..... Cantilever Storage Rack Series  
 7005..... Mobile Mortuary Rack Series

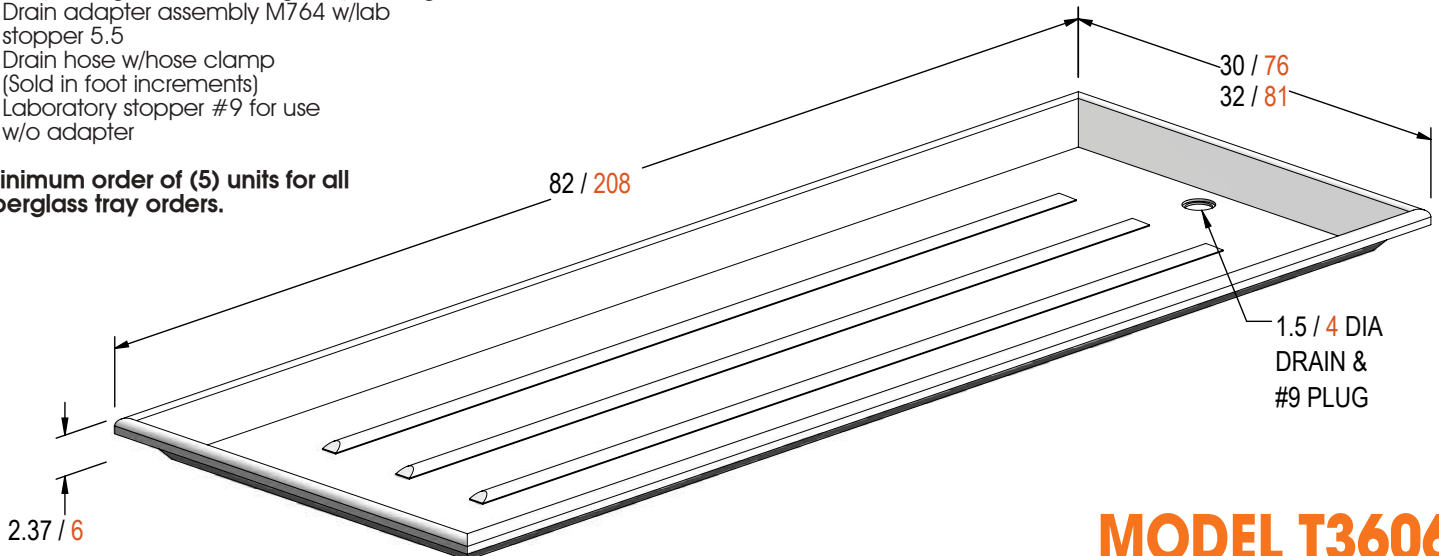


MODEL 600018 AUTOPSY  
CARRIER w/T3606  
FIBERGLASS TRAY

## Optional Accessories

- X-ray slide guides for holding X-ray cartridge
- Drain adapter assembly M764 w/lab stopper 5.5
- Drain hose w/hose clamp (Sold in foot increments)
- Laboratory stopper #9 for use w/o adapter

Minimum order of (5) units for all fiberglass tray orders.



## MODEL T3606 FIBERGLASS TRAY

All measurements in inches/centimeters +-





MODEL 600015H AUTOPSY CARRIER  
w/T3614 TRAY

STANDARD DESIGN FEATURES

Length: ..... 82 in./208 cm.  
Height/Overall: ..... 1.5 in./3 cm.  
Width: ..... 31 in./78 cm.  
Design load: ..... 500 lbs./227 kg.

A real time and energy saver, the detachable stainless steel top will ensure a secure fit with no mechanical fastening devices required. It is fabricated from 14 gauge, 304 stainless steel with a No. 4 finish. Interior long sides are angled to allow for easier body transfer. It features a depressed pattern, allowing fluids to drain easily.

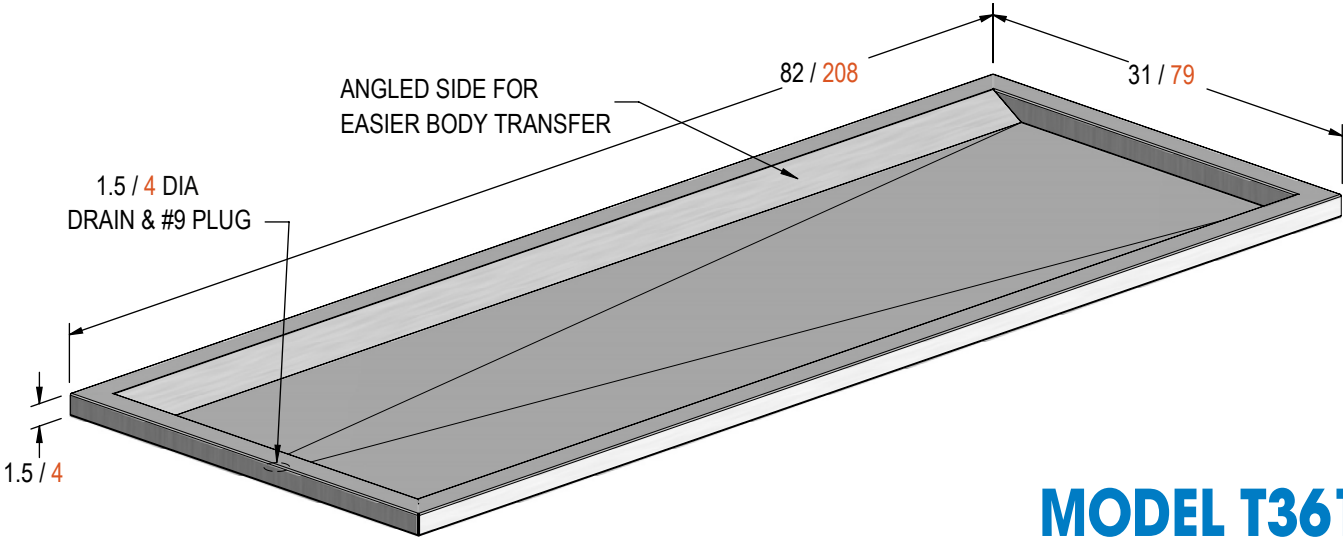
Will combine with and appropriate for the following Carriers:

- 600000 ..... Carrier Chassis Series
- 600015 ..... Autopsy Carrier Series
- 600017 ..... Autopsy Carrier Series

Optional Accessories

- Laboratory stopper #9 (1.5 diameter drain)

All measurements in inches/centimeters +-



MODEL T3614  
STAINLESS STEEL AUTOPSY TRAY

## STANDARD DESIGN FEATURES

Length: ..... 82 in./208 cm.  
 Height/Overall: ..... 1.75 in./4 cm.  
 Width: ..... 31.25 in./79 cm.  
 Design load: ..... 750 lbs./340 kg.

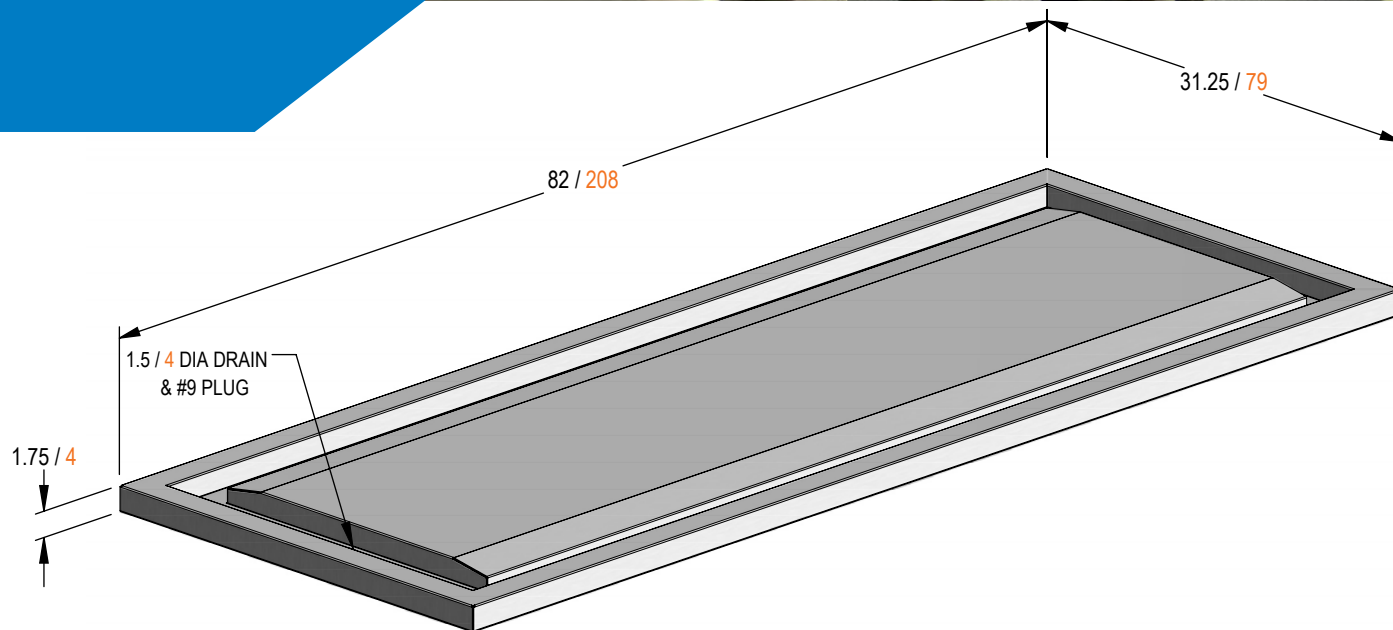
The stainless steel autopsy platform is fabricated with a perimeter trough which allows fluid to flow away from the body and down the sides of the platform toward the drain. A drain plug comes standard to prevent fluid loss in transport or while racking and stored. The unit is fabricated from 14 gauge, 304 stainless steel with a No. 4 finish. All exposed welds are ground and polished to match adjoining surfaces.

Will combine with the following Carriers:

600000 ..... Carrier Chassis Series  
 600015 ..... Autopsy Carrier Series  
 600017 ..... Autopsy Carrier Series

## Optional Accessories

- Laboratory stopper #9 for use w/o adapter



All measurements in inches/centimeters +-

## MODEL T3615 STAINLESS STEEL AUTOPSY TRAY w/ TROUGH



# CADAVER TRAYS



## STANDARD DESIGN FEATURES

Length: ..... 78 in./198 cm.  
Height: ..... 2.75 in./7 cm.

## TRAY WIDTH

Width: ..... (18 Gauge) 23 in./58 cm.  
Design load: ..... 300 lbs./136 kg.  
Width: ..... (16 Gauge) 27 in./69 cm.  
Design load: ..... 400 lbs./181 kg.  
Width: ..... (14 Gauge) 30 in./76 cm.  
Design load: ..... 500 lbs./226 kg.

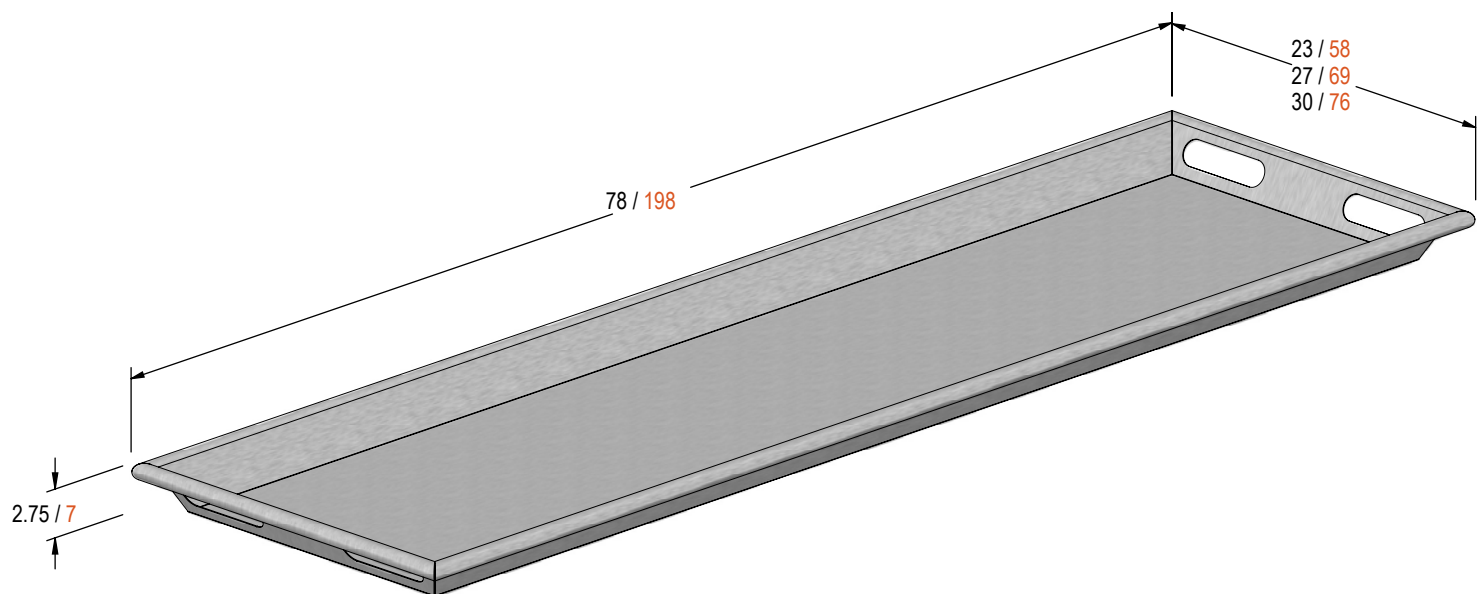
- Fabricated with hand slots and without a drain hole
- Inside corners finished smooth for easy cleaning
- All edges rolled and welded for extra strength
- Custom sizes are available

Will combine with the following mortuary racks, refrigerators and cadaver carriers:

600018 ..... Series Carrier for T3626-HS  
600038 ..... Series carrier with Rollers  
7002 ..... Cantilever Storage Rack Series  
7005 ..... Cantilever Storage System  
7010 ..... Portable Mortuary Rack Series  
7011 ..... Portable Cremation Storage Rack Series  
7030 ..... Mortuary Rack System  
86-129 ..... Expandable Mortuary Rack  
7020-26 ..... Two Tier Storage Carrier  
600035 ..... Embalming Table  
600038 ..... Autopsy Carrier w/ Rollers  
600040 ..... Cadaver Carrier w/ Rollers

## Optional Accessories

- Fabricated w/o hand slots
- Drain
- Laboratory stopper #9 (1.5 diameter drain)



All measurements in inches/centimeters +-

## SERIES T3626 STANDARD BODY TRAY



Model T3627 Tray  
w/T936-R112-EC

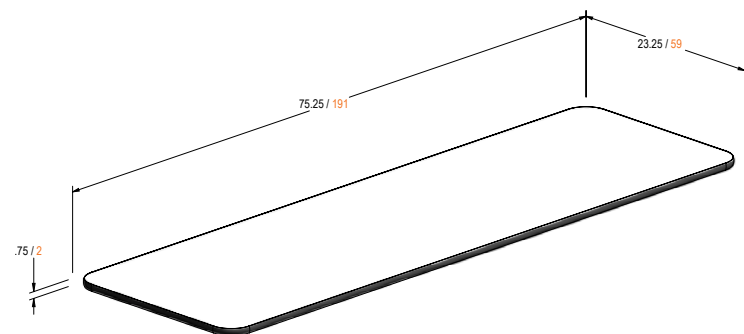
## MODEL T3624

Designed as an economical body storage tray for use with our cadaver storage system.

### STANDARD DESIGN FEATURES

Length: ..... 75.25 in./191 cm.  
Height: ..... 0.75 in./2 cm.  
Width: ..... 23.25 in./59 cm.

- Rubber molding around full perimeter
- For use with storage racks that have support arms spread a maximum of 42 in./106 cm.
- 75 in./1 cm. plywood with laminate on top and protective coating on bottom
- Weight capacity will vary depending on storage application (PLEASE INQUIRE)



## MODEL T3624

All measurements  
in inches/centimeters +-

## MODEL T3624 STORAGE BOARD

## MODEL T3628

304 Stainless steel storage tray for use with our cadaver storage system. Available in two sizes.

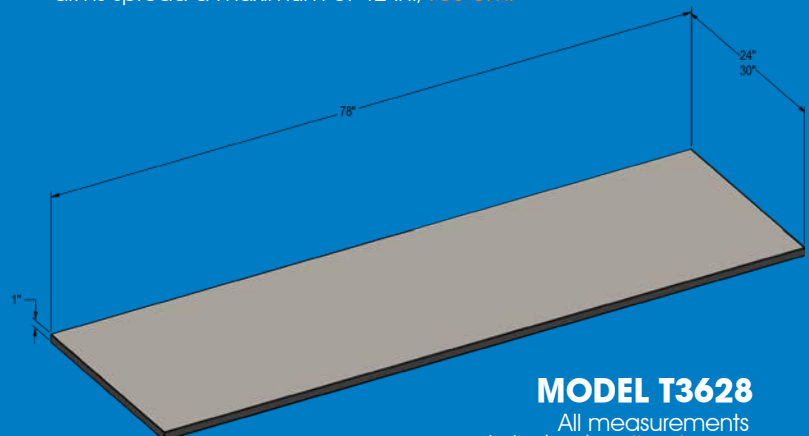
### STANDARD DESIGN FEATURES

Length: ..... 78 in./198 cm.  
Height: ..... 1 in./2.5 cm.

### TRAY WIDTH

Width: ..... 24 in./61 cm.  
Design load: ..... 300 lbs./136 kg.  
Width: ..... 30 in./76 cm.  
Design load: ..... 300 lbs./136 kg.

- 16 gauge tray with 14 gauge understructure providing extra strength
- All edges welded for extra strength
- Tray completely flat for easy body transfer
- For use with storage racks that have support arms spread a maximum of 42 in./106 cm.



## MODEL T3628

All measurements  
in inches/centimeters +-

## MODEL T3628 FLAT STORAGE TRAY



## MODEL T3627

Designed for use with mortuary refrigerators and storage racks with full-width roller assemblies. It provides a stable platform for use with cremation containers or shrouded cadavers. They also perform well for body transfers from removal cots.

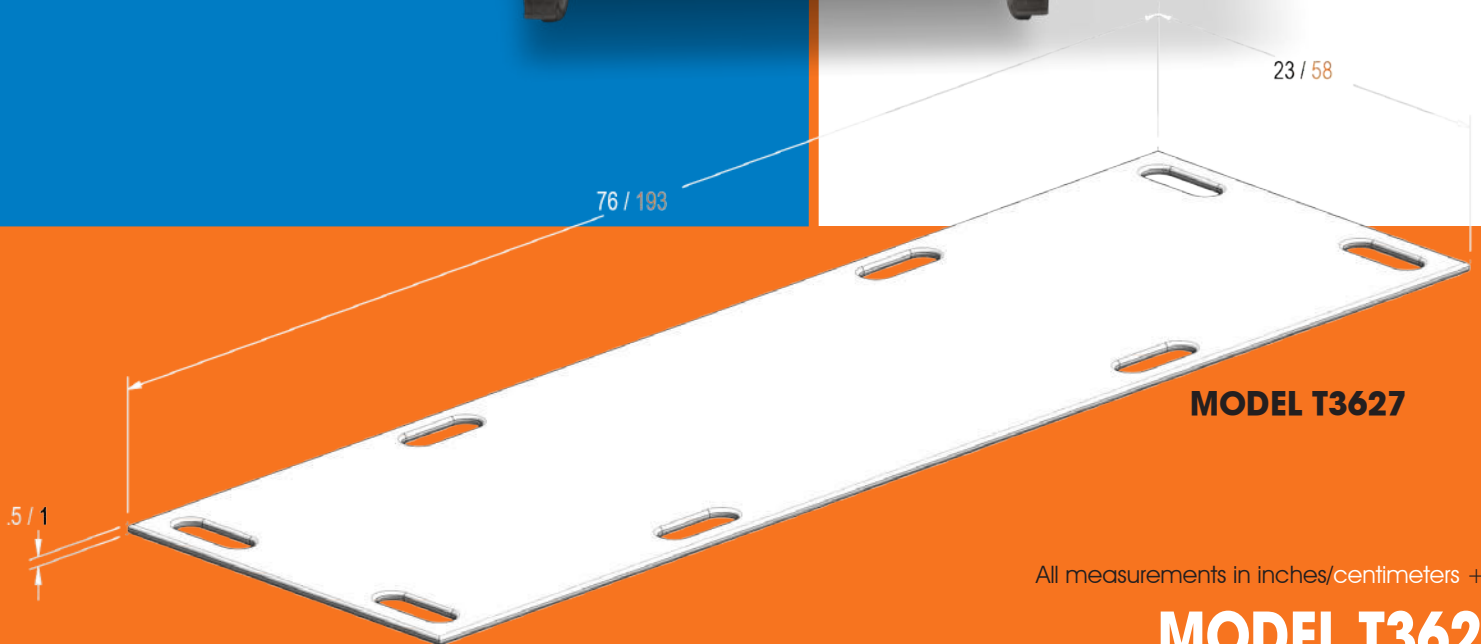
### STANDARD DESIGN FEATURES

Length: ..... 76 in./193 cm.  
Height: ..... 0.5 in./1 cm.  
Width: ..... 23 in./58 cm.

- Fabricated with eight hand slots
- All edges are rounded
- Machined from high density polyethylene
- .75 in. height option available
- Custom sizes available
- Weight capacity will vary depending on storage application (PLEASE INQUIRE)



Model T3627 Tray  
w/1036-R114-EC



**MODEL T3627**

All measurements in inches/centimeters +-

## MODEL T3627 TRANSFER BOARD





**T3626HS  
DRAIN  
PLUG**



**T3603/T3604 DRAIN ADAPTER M-764  
(OPTIONAL) (TOP VIEW)**



**T3615 SPLASH BOARD (OPTIONAL)**

**DRAIN ADAPTER  
(OPTIONAL) CAN BE ADDED TO  
A VARIETY OF TRAYS TO ASSIST  
IN THE COLLECTION OF WASTE  
MATERIAL**

#### **TRAY ACCESSORIES**

|          |     |  |
|----------|-----|--|
| DP-9     | 5-9 | Drain plug for<br>1.5" diameter<br>For T3606, T3614,<br>T3615, T3626<br>For T3603, T3604<br>without drain<br>connector |
| DHC-0304 | 5-9 | Drain Hose Con-<br>nector for T3603/<br>T3604<br>For T3606, T3614,<br>T3615, T3626                                     |
| DP-5.5   | 5-9 | Drain plug for<br>DHC-0304<br>For T3606, T3614,<br>T3615, T3626  |
| DH-1.5   | 5-9 | Drain Hose for<br>1.5" connetions -<br>by the foot   |

Body trays can be equipped with  
an optional drain line for fluid  
collection.

#### **DESIGNED FOR THE FOLLOWING TRAYS**

- T3603, T3604, T3606, T3615,  
T3615, T3626HS

#### **SPECIFICATIONS**

- 1.5 in./4 cm drain
- 1.5 in./4 cm drain hose
- Drain plug
- Custom sizes are available

| Week | Monday | Tuesday | Wednesday | Thursday | Friday | Saturday | Sunday |
|------|--------|---------|-----------|----------|--------|----------|--------|
| 1    |        |         |           |          |        |          |        |
| 2    |        |         |           |          |        |          |        |
| 3    |        |         |           |          |        |          |        |
| 4    |        |         |           |          |        |          |        |
| 5    |        |         |           |          |        |          |        |
| 6    |        |         |           |          |        |          |        |
| 7    |        |         |           |          |        |          |        |
| 8    |        |         |           |          |        |          |        |
| 9    |        |         |           |          |        |          |        |
| 10   |        |         |           |          |        |          |        |
| 11   |        |         |           |          |        |          |        |
| 12   |        |         |           |          |        |          |        |
| 13   |        |         |           |          |        |          |        |
| 14   |        |         |           |          |        |          |        |
| 15   |        |         |           |          |        |          |        |
| 16   |        |         |           |          |        |          |        |
| 17   |        |         |           |          |        |          |        |
| 18   |        |         |           |          |        |          |        |
| 19   |        |         |           |          |        |          |        |
| 20   |        |         |           |          |        |          |        |
| 21   |        |         |           |          |        |          |        |
| 22   |        |         |           |          |        |          |        |
| 23   |        |         |           |          |        |          |        |
| 24   |        |         |           |          |        |          |        |
| 25   |        |         |           |          |        |          |        |
| 26   |        |         |           |          |        |          |        |
| 27   |        |         |           |          |        |          |        |
| 28   |        |         |           |          |        |          |        |
| 29   |        |         |           |          |        |          |        |
| 30   |        |         |           |          |        |          |        |
| 31   |        |         |           |          |        |          |        |
| 32   |        |         |           |          |        |          |        |
| 33   |        |         |           |          |        |          |        |
| 34   |        |         |           |          |        |          |        |
| 35   |        |         |           |          |        |          |        |
| 36   |        |         |           |          |        |          |        |
| 37   |        |         |           |          |        |          |        |
| 38   |        |         |           |          |        |          |        |
| 39   |        |         |           |          |        |          |        |
| 40   |        |         |           |          |        |          |        |
| 41   |        |         |           |          |        |          |        |
| 42   |        |         |           |          |        |          |        |
| 43   |        |         |           |          |        |          |        |
| 44   |        |         |           |          |        |          |        |
| 45   |        |         |           |          |        |          |        |
| 46   |        |         |           |          |        |          |        |
| 47   |        |         |           |          |        |          |        |
| 48   |        |         |           |          |        |          |        |
| 49   |        |         |           |          |        |          |        |
| 50   |        |         |           |          |        |          |        |
| 51   |        |         |           |          |        |          |        |
| 52   |        |         |           |          |        |          |        |
| 53   |        |         |           |          |        |          |        |
| 54   |        |         |           |          |        |          |        |
| 55   |        |         |           |          |        |          |        |
| 56   |        |         |           |          |        |          |        |
| 57   |        |         |           |          |        |          |        |
| 58   |        |         |           |          |        |          |        |
| 59   |        |         |           |          |        |          |        |
| 60   |        |         |           |          |        |          |        |
| 61   |        |         |           |          |        |          |        |
| 62   |        |         |           |          |        |          |        |
| 63   |        |         |           |          |        |          |        |
| 64   |        |         |           |          |        |          |        |
| 65   |        |         |           |          |        |          |        |
| 66   |        |         |           |          |        |          |        |
| 67   |        |         |           |          |        |          |        |
| 68   |        |         |           |          |        |          |        |
| 69   |        |         |           |          |        |          |        |
| 70   |        |         |           |          |        |          |        |
| 71   |        |         |           |          |        |          |        |
| 72   |        |         |           |          |        |          |        |
| 73   |        |         |           |          |        |          |        |
| 74   |        |         |           |          |        |          |        |
| 75   |        |         |           |          |        |          |        |
| 76   |        |         |           |          |        |          |        |
| 77   |        |         |           |          |        |          |        |
| 78   |        |         |           |          |        |          |        |
| 79   |        |         |           |          |        |          |        |
| 80   |        |         |           |          |        |          |        |
| 81   |        |         |           |          |        |          |        |
| 82   |        |         |           |          |        |          |        |
| 83   |        |         |           |          |        |          |        |
| 84   |        |         |           |          |        |          |        |
| 85   |        |         |           |          |        |          |        |
| 86   |        |         |           |          |        |          |        |
| 87   |        |         |           |          |        |          |        |
| 88   |        |         |           |          |        |          |        |
| 89   |        |         |           |          |        |          |        |
| 90   |        |         |           |          |        |          |        |
| 91   |        |         |           |          |        |          |        |
| 92   |        |         |           |          |        |          |        |
| 93   |        |         |           |          |        |          |        |
| 94   |        |         |           |          |        |          |        |
| 95   |        |         |           |          |        |          |        |
| 96   |        |         |           |          |        |          |        |
| 97   |        |         |           |          |        |          |        |
| 98   |        |         |           |          |        |          |        |
| 99   |        |         |           |          |        |          |        |
| 100  |        |         |           |          |        |          |        |

411 North Aerojet Avenue  
Azusa, CA 91702  
[www.mortechmfg.com](http://www.mortechmfg.com)

# NOTES