



MODEL 1036-1
WATER CONTROL
UNIT

CAUTION

Inspect unit and all components for any loosening that may have occurred during shipping

CAUTION

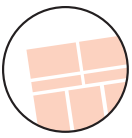
DO NOT USE CLEANERS CONTAINING CHLORINE WHEN CLEANING STAINLESS STEEL

ATTENTION

Review entire manual before starting assembly

ATTENTION

All images and Drawing in this manual may not represent your model. Refer to your particular project for exact specifications



Safety Information

It is important that the information provided in this manual is observed. These instructions should be read carefully and observed fully before installation and initial operation.

WARNING

It is crucial that any work performed on Mortech Manufacturing Inc. manufactured items are carried out exclusively by skilled professionals who have the respective training. Improper use, maintenance, parts and service, or modification to the equipment may cause injury and/or damage. Use and maintain the equipment only for the purpose described in this manual. Use only Mortech Manufacturing Inc. prescribed approved parts and service. Use the equipment only as designed by Mortech Manufacturing Inc.

BLOODBORNE DISEASE NOTICE

To reduce the risk of exposure to bloodborne diseases such as HIV-1 and hepatitis when using the equipment, follow the disinfecting and cleaning instructions in this manual.

RECOMMENDED OPERATING SKILLS AND TRAINING

- SKILLS

Operators using the equipment need:

- ☐ A working knowledge of necessary procedures.
- ☐ The ability to carry out necessary service procedures.
- ☐ A complete understanding of the procedures described in this manual.

- TRAINING

- ☐ Read the this manual as prescribed
- ☐ Be trained on the use of the equipment.
- ☐ Practice with the equipment before using it in regular service.
- ☐ Be tested on their understanding of the equipment operation.
- ☐ Record their training.

BEFORE USING THE EQUIPMENT

Personnel working with this equipment needs to read this manual. Assemble of the unit following set instructions, and perform any pre-service checks to confirm the units operates properly.

INSPECTING THE UNIT BEFORE USE

Please take time to inspect all shipment prior to signing delivery ticket. If concealed damage is discovered, save the carton and immediately contact carrier agent to initiate claim of damage.

BE SURE TO CHECK!

- Are all components present?
 - Do the moving parts operate smoothly?
 - Is unit draining properly?
 - Are all nuts, bolts, and pins secured in place?
- If unit has an issue contact Mortech Manufacturing Inc.

INSTRUCTION FOR HANDLING

Adhere to state and/or local certification and regulations for operation of forklift and/or pallet jack. Cargo is extremely heavy, be sure to have the necessary manpower as well as equipment to successfully unload shipment from transport. We recommend a forklift and/or pallet jack with the capacity to lift up to 2000 lbs. to remove cargo from transport.

The forklift can be used to unload receiving products safely by placing the load on the floor, maneuvering the forklift into position, tilting the mast forward to vertical position so the load will be level, lowering the load, and smoothly backing away without dragging. Once cargo is unloaded, positioning equipment for installation will once again require a forklift. Read all manual and note on installation of the unit before attempting installing.

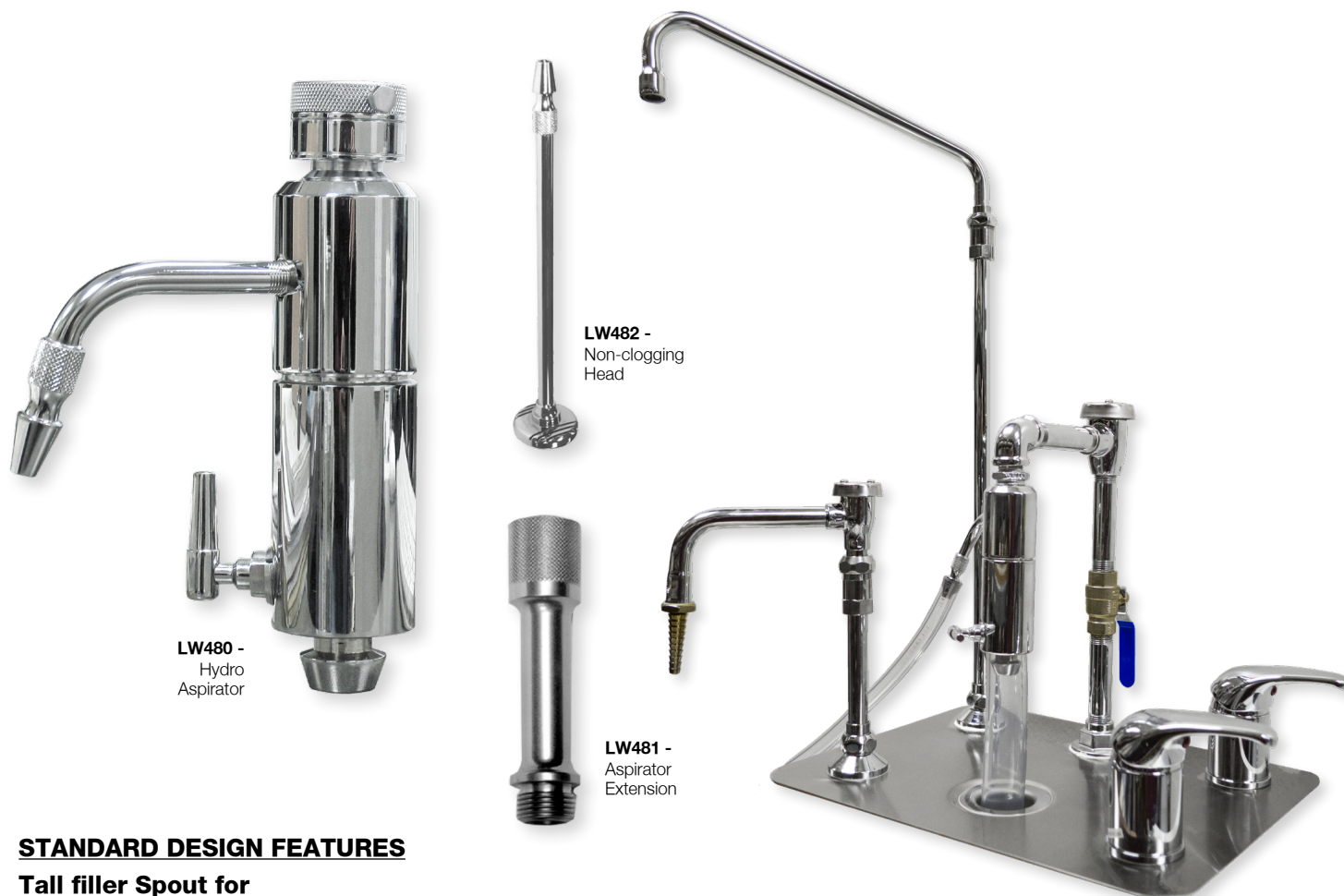
The pallet jack can be used (with a loading dock and maneuverability on and off the transport vehicle) to unload receiving products safely. Maneuvering the pallet jack into position (in the appropriate position within the pallet), lifting the pallet then driving the pallet jack off the transport and safely into the place of installation.

Range of Environmental Condition

Mortech Manufacturing, Inc. equipment shall be placed in a controlled environment (housing or housed unit) hindering the weathering effects on the installed units. The equipment will have minimal corrosive and eroding factors that can break down the stability and operation of Mortech Manufacturing Inc. equipment. The impact on the equipment by the operator utilizing water or corrosives in the medical procedures can be controlled and responsibility for the cleaning and maintenance placed upon that person. The effects of anthropogenic (man-made) gasses on the environment, such as carbon dioxide (CO₂) that will be omitted from the unit should be minimal.

Due to continuous innovation and product development this installation guide is subject to change without notice.

Please save these instructions for later use.



STANDARD DESIGN FEATURES

Tall filler Spout for Embalming Machine

The tall faucet is designed for your embalming machine to fit under the spout. By using the master mixing valve, you can supply the desired temperature to the tank of your machine. The spout is easily turned out of the way when not in use.

Table Rinse

A serrated attachment is provided for quick connection of rinse hose. A constant flow of water can be supplied to the embalming table for cleaning or procedure purpose. The rinse is vacuum breaker protected for backflow prevention. Rinse Hose included.

Master Mixing Valves

Water temperature to the table rinse and tall faucet are easily controlled with the master mixing valves. Simply adjust lever until the desired temperature is archived.

Hydro-Aspirator Assembly

A hydro-aspirator with built-in vacuum breaker prevents contamination of your

water supply. The clear sight drain the air gap will not allow aspirated material back into the aspirator assembly. A valve is provided to control water supply to the aspirator assembly. Included 10 ft./3 m. aspirator hose, 5 in./12 cm. aspirator drain hose and 10 ft./3 m. spray hose.

Easy Installation

The entire unit is pre-assembled and pre-plumbed for easy installation. Simply drop into the cutout in your countertop and connect the utility lines. The base plate is fabricated of heavy gauge stainless steel. Will install incounters as shallow as 18 in./45 cm. deep. Specify Left or Right configuration. Tall filler spout designates side.

LW480 Aspirator

Deluxe hydro-aspirator with built-in vacuum breaker and control lever to be used to reverse the flow of water so as to direct it through the hose connections for either drawing fluid

from the body cavity or rinsing a desired location. Fits most standard faucet threads. Fabricated from chrome plated brass.

LW481 Extension

The hydro-aspirator extension is fabricated from chrome plated brass. It provides further safety against polluted backflow.

LW482 Non-clogging Head

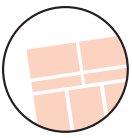
The Non-Clogging Aspirator Head prevents large debris from entering and clogging the system.

Aspirator Hose

Quality Clear Vinyl Tubing.

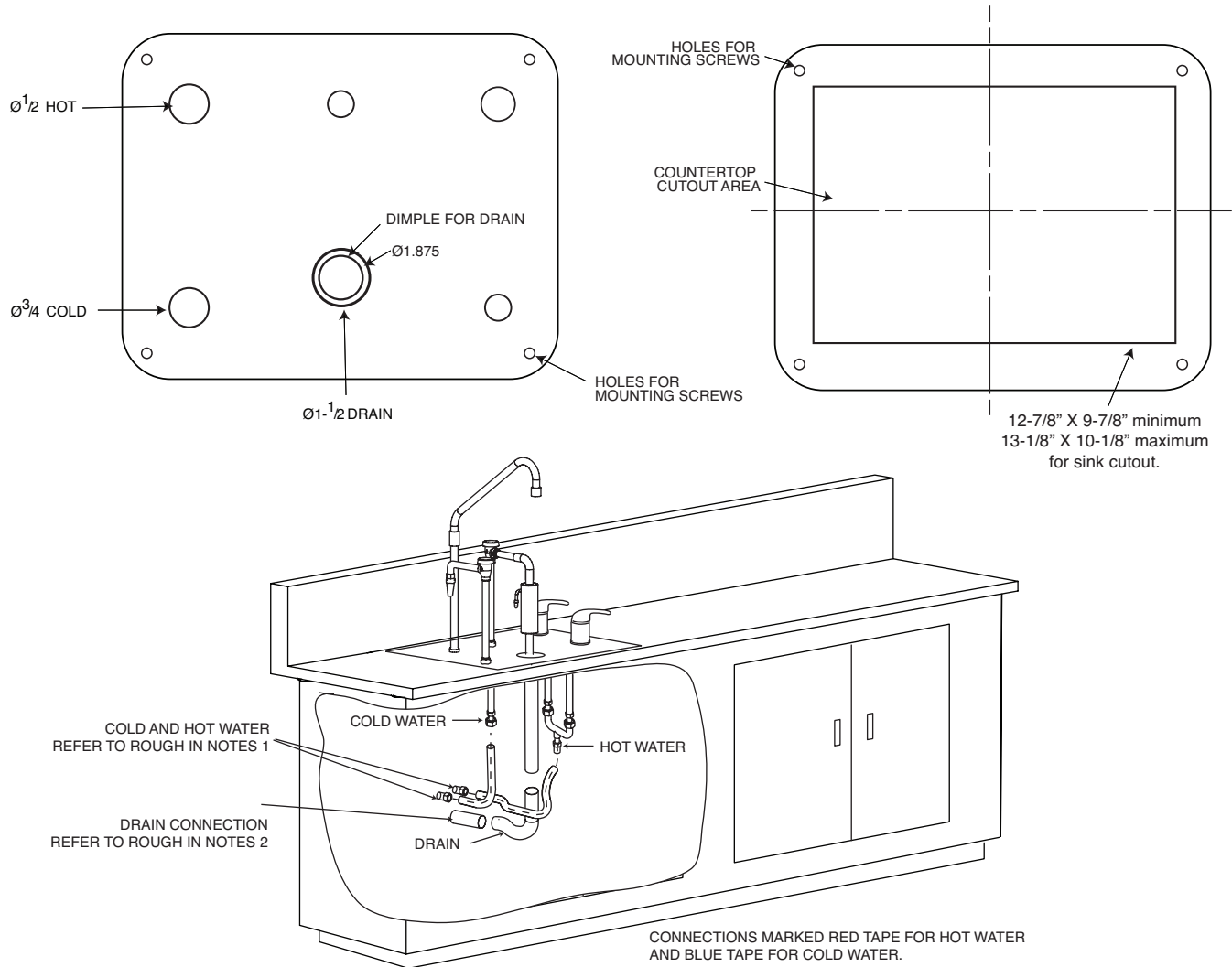


Aspirator
Hose



Installation

1036-1 Water Control Unit



ROUGH IN NOTES

1. A 12-7/8" X 9-7/8" minimum and a 13-1/8" X 10-1/8" maximum area for inlet plumbing to include the following: One (1) cold water supply, 3/4". One (1) hot water supply, 1/2" Supply shut off valves at each water supply.

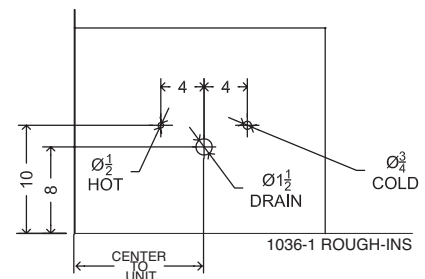
Provide 58-60 lbs. water pressure and 4 gallons per minute of flow for proper operation of hydro aspirator.

Flush lines clear before connecting to station.

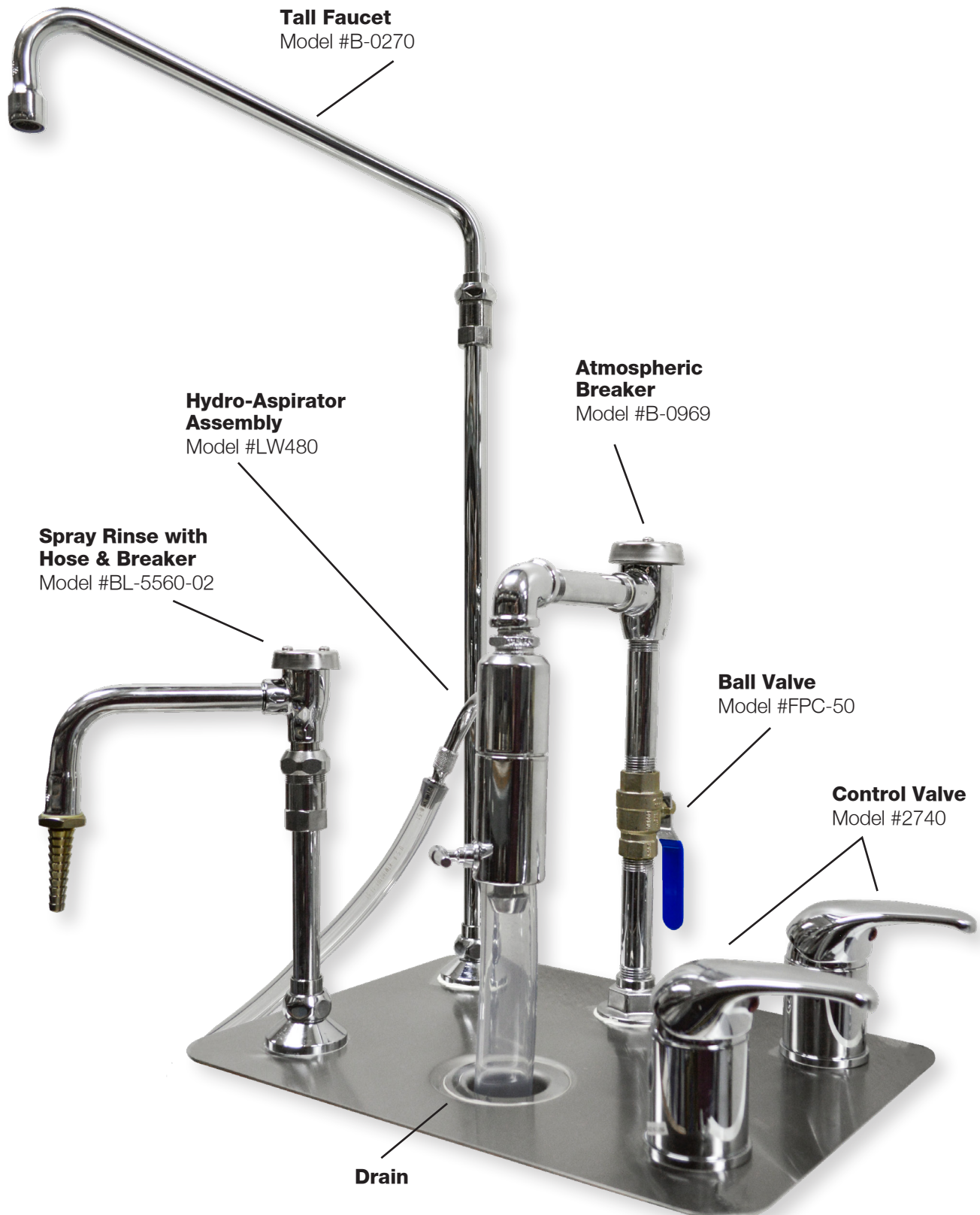
2. One (1) standard 1-1/2" waste line
Plumber to provide shut off valve for water connection and P-Trap for drain.

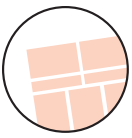
MOUNTING HARDWARE

- 10-24 X 2" Thrush Head Bolt
- 10-24 Nut
- Flat Washer
- Locking Washer

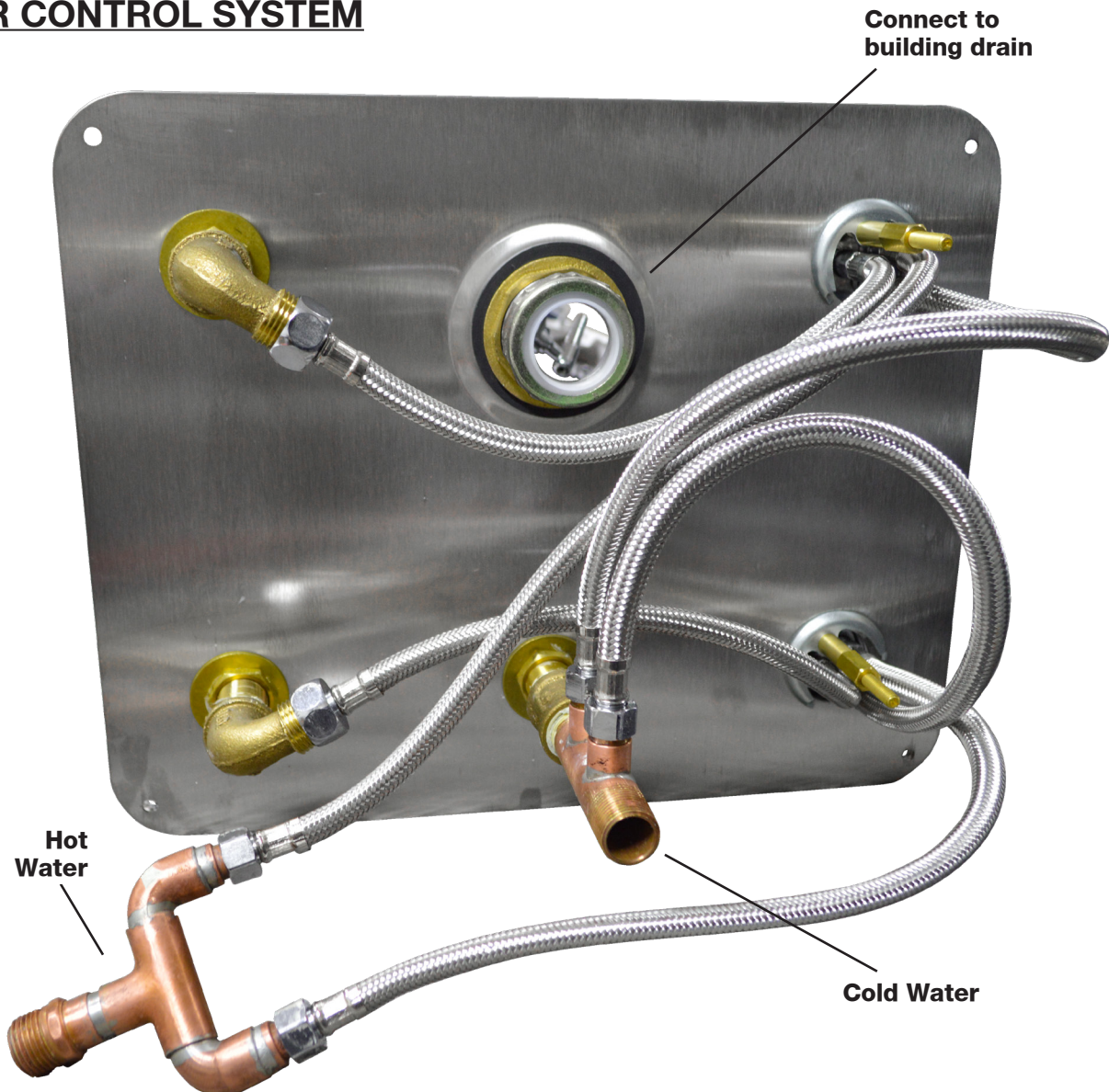


MODEL 1036-1
WATER CONTROL SYSTEM





MODEL 1036-1 **WATER CONTROL SYSTEM**



TROUBLESHOOTING

Mixing faucet leaking

- Contact plumber to diagnose problem
- Replace faucet gasket seals

Sink not draining

- Check for debris in sink area
- Contact plumber to diagnose and clear drain if problem persists

Rust developing

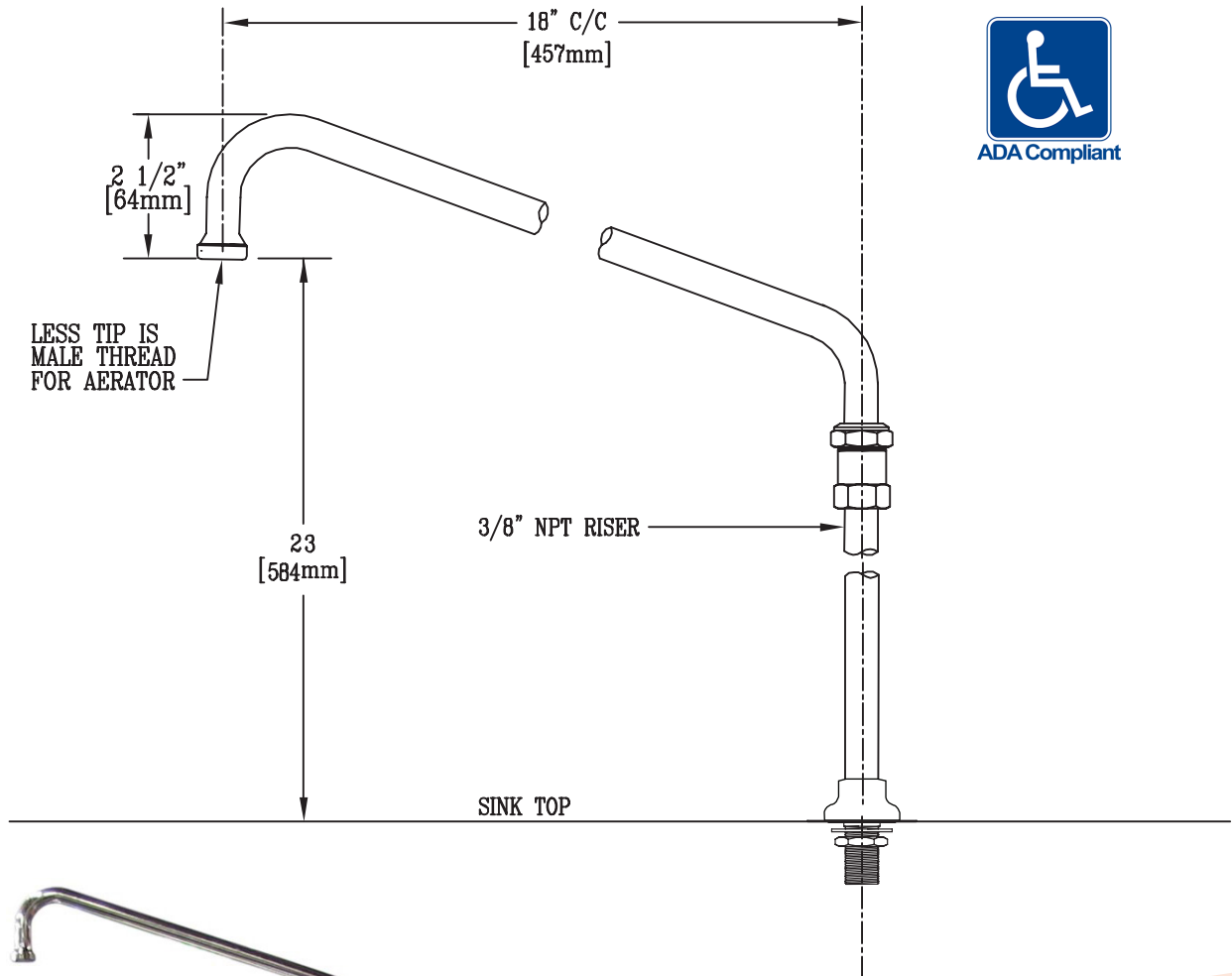
- Check for standing water in rust area
remove standing water
- Check for non stainless metals left on rust area
- Follow rust removal instructions

Aspirator not functioning

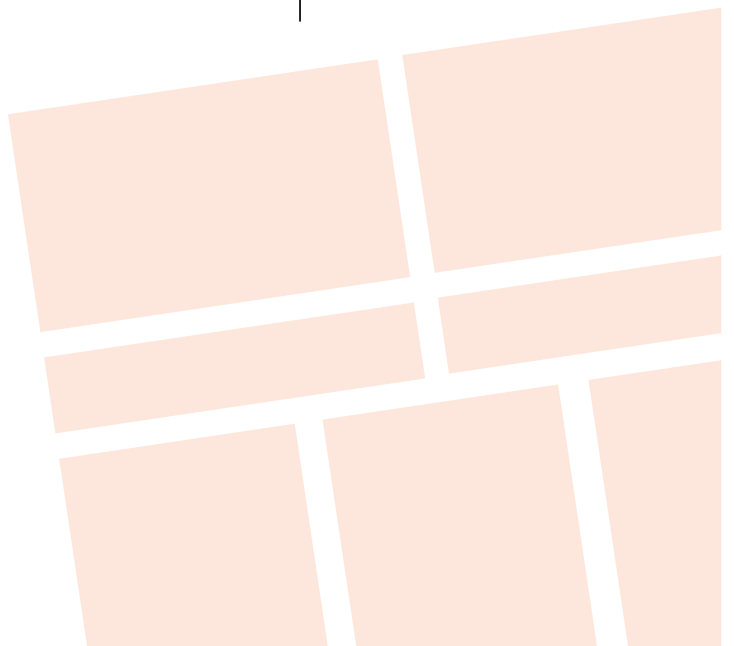
- Check for adequate water pressure min. -60 lbs. psi
- Check for proper water flow through the unit
4 gallons per minute
- If above two are adequate, disassemble unit and
check for debris causing a clog in the unit.
- Call mortech customer service if problem persists

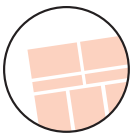
**DOUBLE PANTRY MIXING FAUCET
with 18 INCH SWING NOZZLE**

T&S MODEL #B-0270



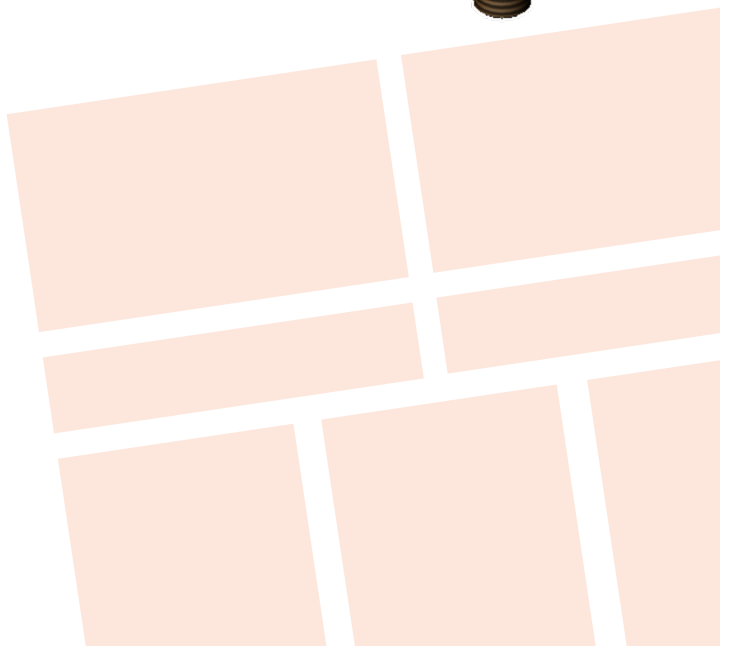
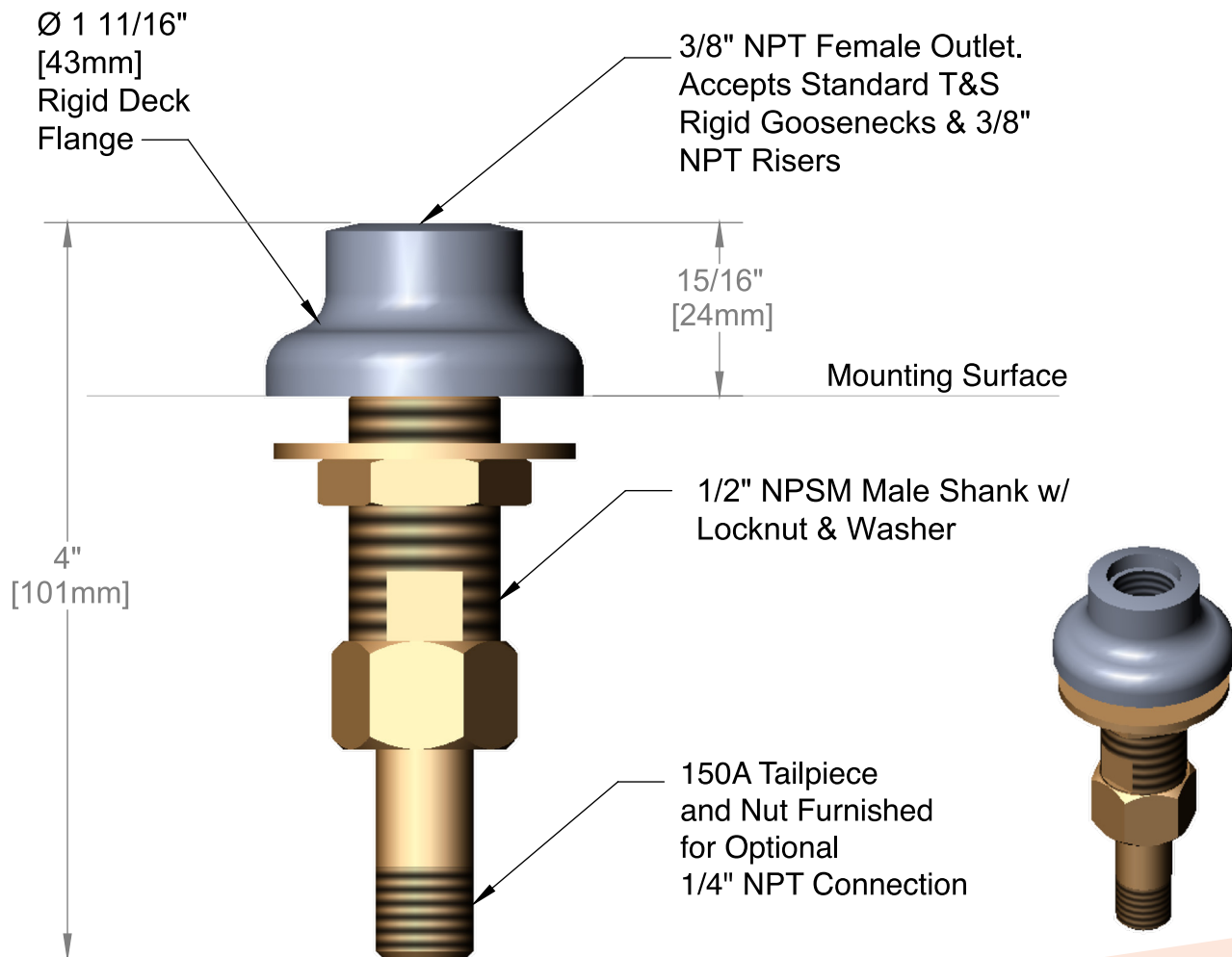
T&S MODEL #B-0270





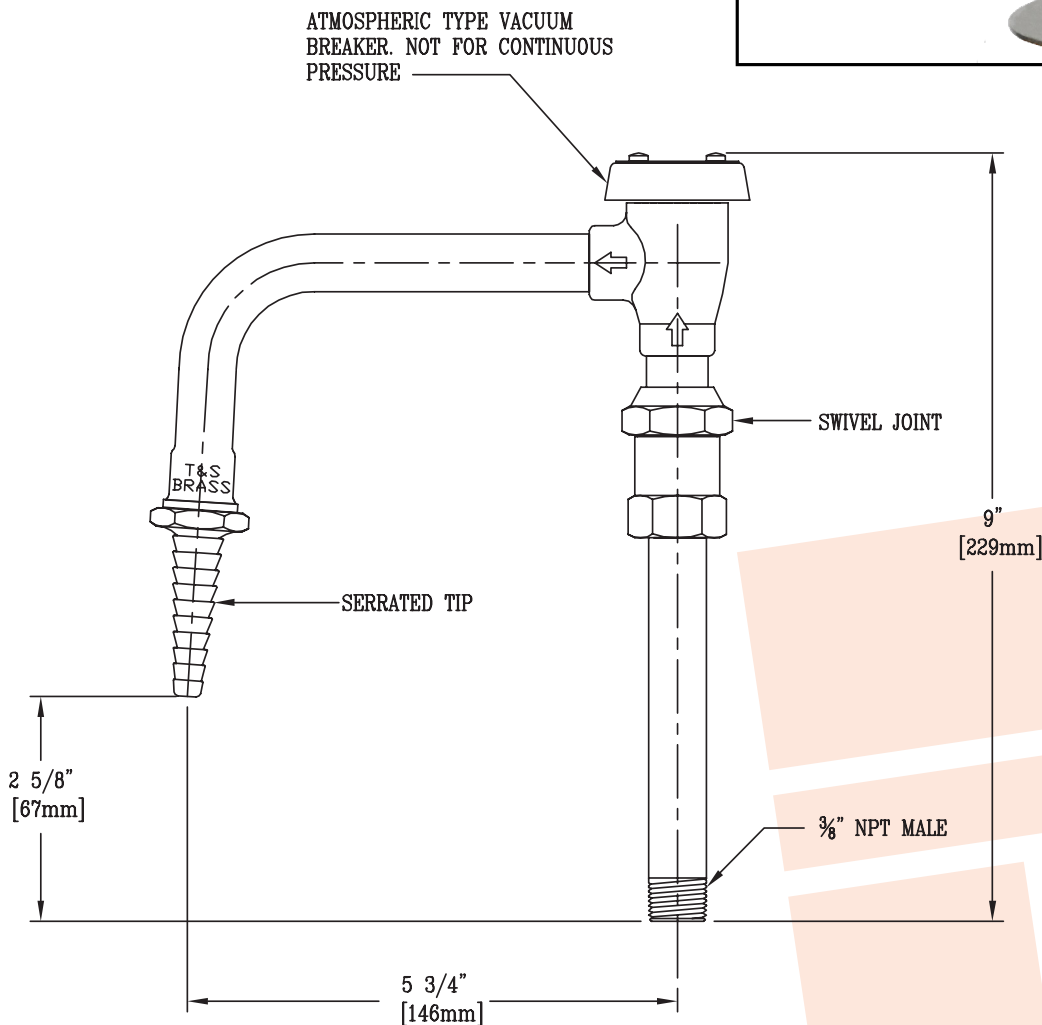
RIGID BASE FLANGE

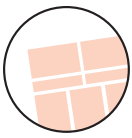
T&S MODEL #B-0430



**SPRAY RINSE WITH HOSE
& BREAKER**

MODEL # BL-5560-02

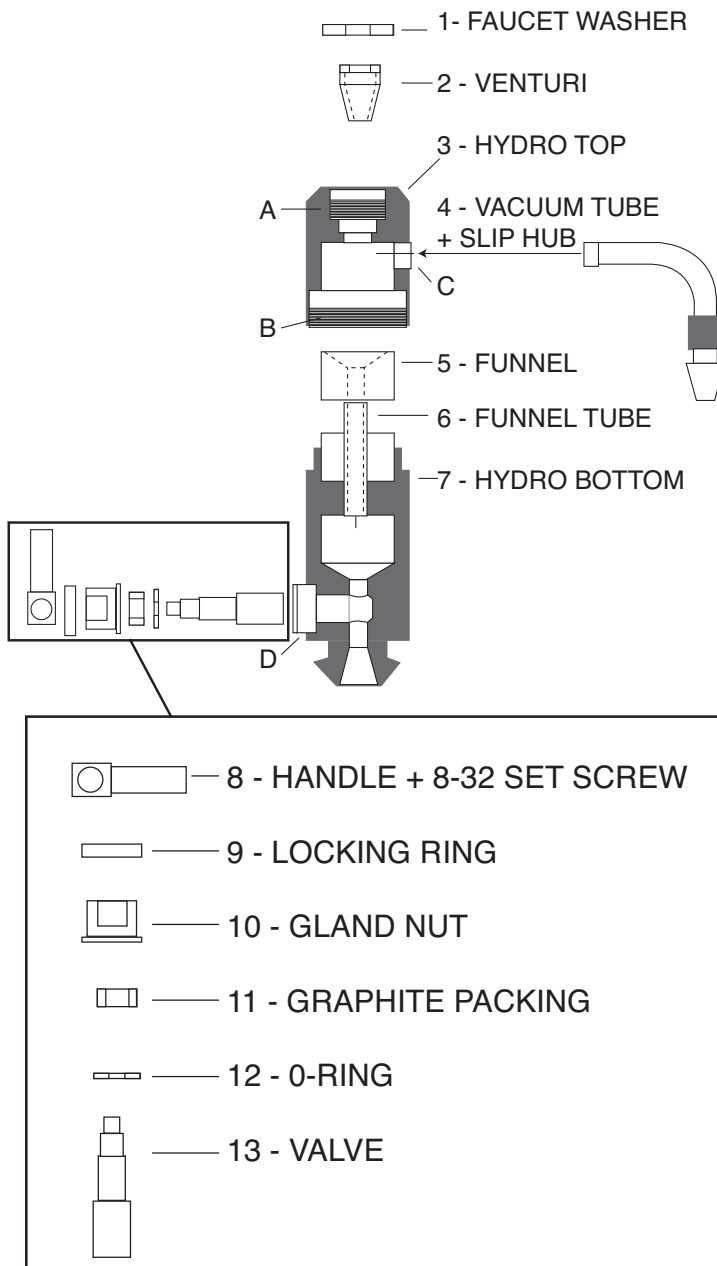




HYDRO-ASPIRATOR

A - VACUUM 3/4-11.5 FAUCET THREAD
 B - 1.500-28 THREAD
 C - 1/8-27 NPS PIPE THREAD
 D - 3/4-32 THREAD

OVERALL ASSEMBLY LENGTH = 5.750 INCHES



Mandatory operation requirements:

- Minimum 1/2" supply line
- Minimum 60 lbs of water pressure
- Minimum 4 gallons per minute of water flow through unit

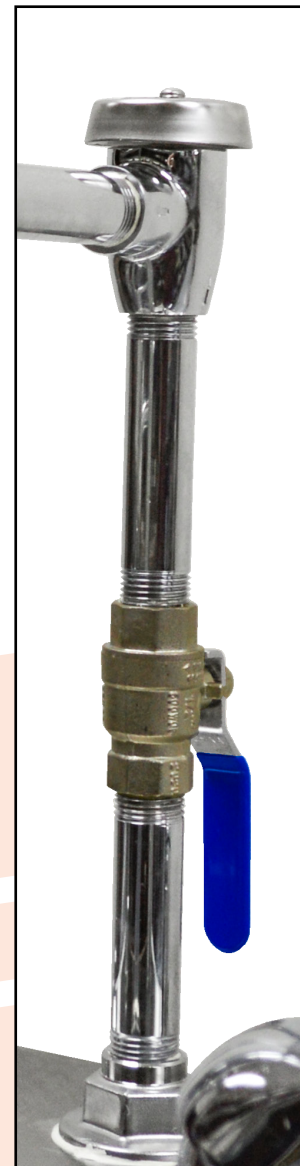
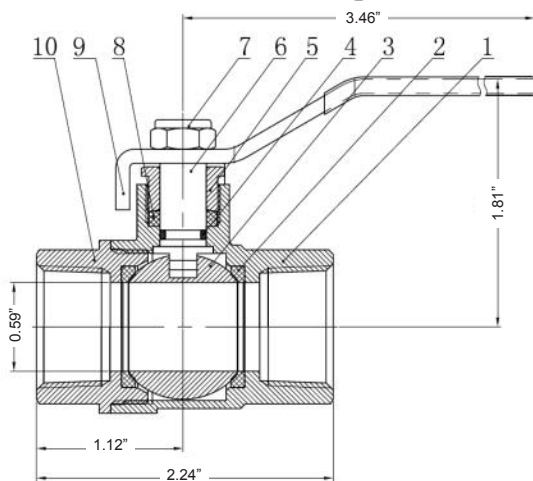
Vacuum up to 26 inches can be maintained at these pressures. Trocar or aspiration line is attached to the aspiration tube. Diverter handle at lower end must be parallel to length of body of aspirator. To back flush the trocar/aspiration line, turn the diverter handle perpendicular to the length of the aspirator. Tubing can be added to the outlet bottom of the aspirator to direct the flow of water into the sink drain.

Reorder No. LW480

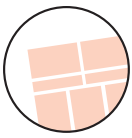


Full Port Brass Ball Valve - Female to Female

- 600 PSI (WOG) / 150 PSI (WSP)
Service for Size 1/4" NPT to 2" NPT
- 400 PSI (WOG) / 150 PSI (WSP)
Service for Size 2-1/2" NPT & 4" NPT
- 450 PSI (WOG) / 150 PSI (WSP)
Service for Size 3" NPT
- Suitable for Vacuum Service to 29" Hg
- Temperature Range: -40F to 365F
- ISO 9002 Registered Factory
- Forged Brass Construction
Through 3" NPT, Cast Brass 4"
- Full Port
- Teflon Ball Seats
- Stem Seat: Teflon Packing
- Chrome Plated Body
- Blow Out Proof Brass Stem
- Hard Chrome Plated Brass Ball
- Plated Steel Handle with Vinyl Grip



Part No.	Part Name	Material
1	Body Brass	C37700/ Nickel Plated
2	Seat	PTFE
3	Ball	Brass C37700 (1/4"-1") SS304 (1-1/4"-4")
4	O-Ring	NBR
5	Packing Nut	Brass C37700/Chrome Nickel
6	Stem	Brass C37700(1/4"-2-1/2") SS304(3"-4")
7	Handle Nut	Ferrum /Chrome Plated
8	Lock Washer	Ferrum /Chrome Plated
9	Stem packing	PTFE
10	Handle	Ferrum / Chrome Plated
11	Cap	Brass C37700 / Chrome Nickel

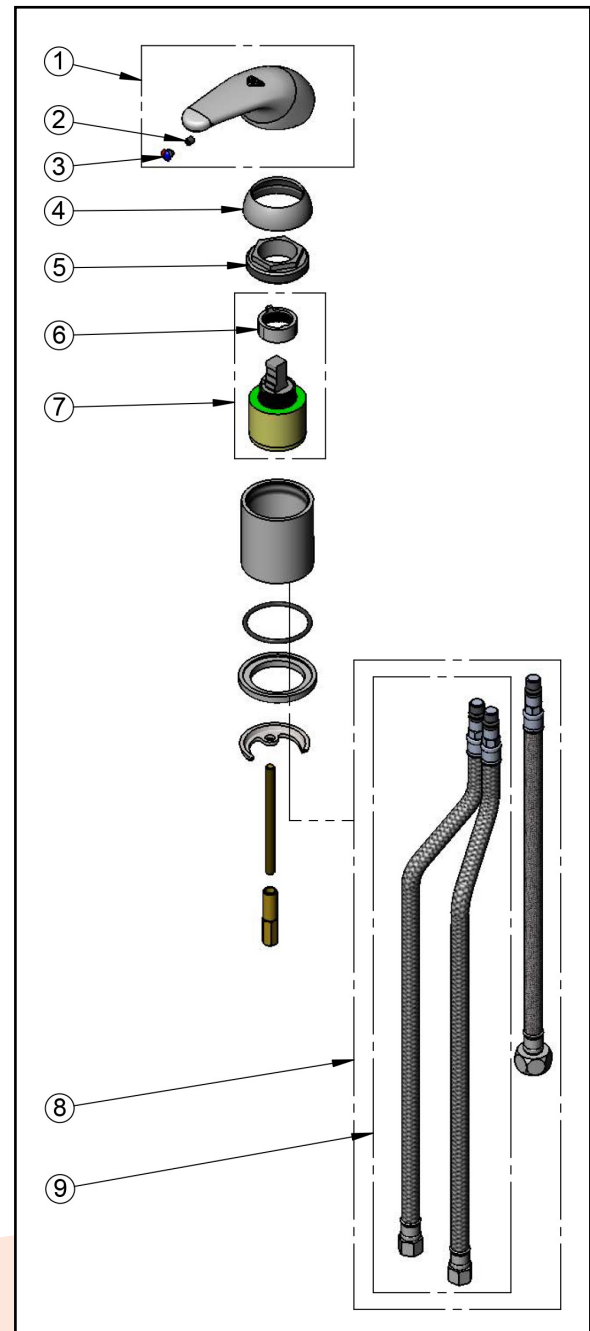


TEMPERATURE MIXING VALVE

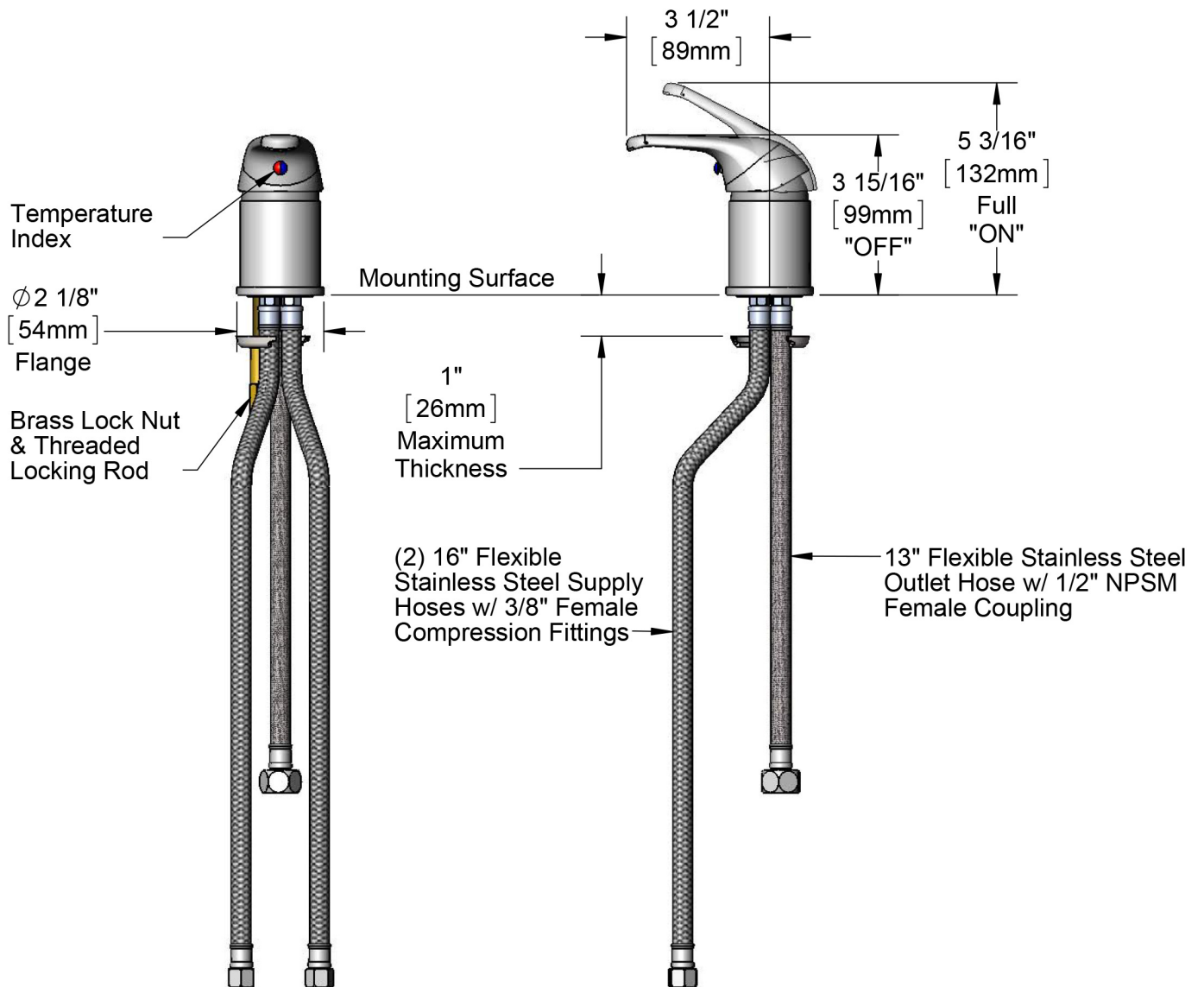
T & S MODEL #2740

Deck mount single lever remote on/off control base faucet, polished chrome plated brass body, ceramic cartridge with adjustable temperature limit stop, single lever handle, 16" flexible stainless steel supply hoses with 3/8" O.D. compression connections and 13" flexible stainless steel outlet hose with 1/2" NPSM female connection. Certified to ASME A112.18.1/CSA B125.1, NSF 61-Section 9 and NSF 372. Meets ADA ANSI/ICC A117.1 requirements.

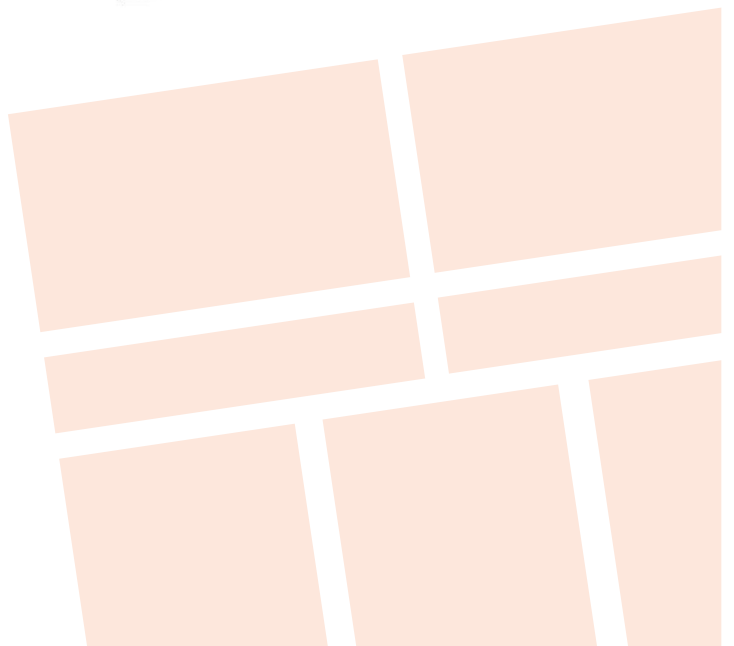
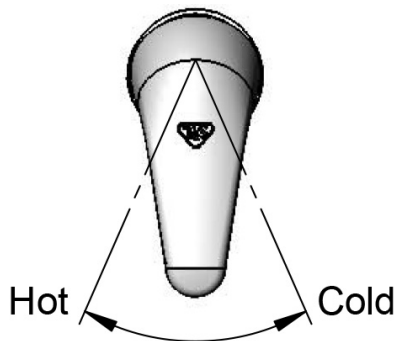
- Deck mounted single lever remote on/off control base faucet, polished chrome plated brass body
- Ceramic cartridge w/ adjustable temperature limit stop
- Single lever handle w/ color coded index
- 16" flexible stainless steel supply hoses with 3/8" O.D. compression connections
- 13" flexible stainless steel outlet hose with 1/2" NPSM female connection
- **Material:** Polished chrome plated brass body, chrome plated metal handle and stainless steel hoses
- **Nozzle Flow:** 6.07 GPM (22.98 L/min)
- **Pressure Min:** 20 psi (1.38 bar)
- **Pressure Max:** 125 psi (8.62 bar)
- **Temperature Min:** 40 F (4.44°C)
- **Temperature Max:** 140 F (60°C)

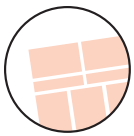


ITEM NO.	SALES NO.	DESCRIPTION
1	013113-45	Single Lever Short Handle
2	016675-45	Set Screw
3	014173-45	Index, Temperature
4	016661-45	Trim Ring
5	016663-45	Locking Nut
6	015400-45	Temperature Limit Stop
7	013080-45	Ceramic Cartridge w/ Temperature Limit Stop
8	013537-45	Inlet & Outlet Hoses
9	016879-45	16" Flexible Stainless Steel Supply Hoses (2)

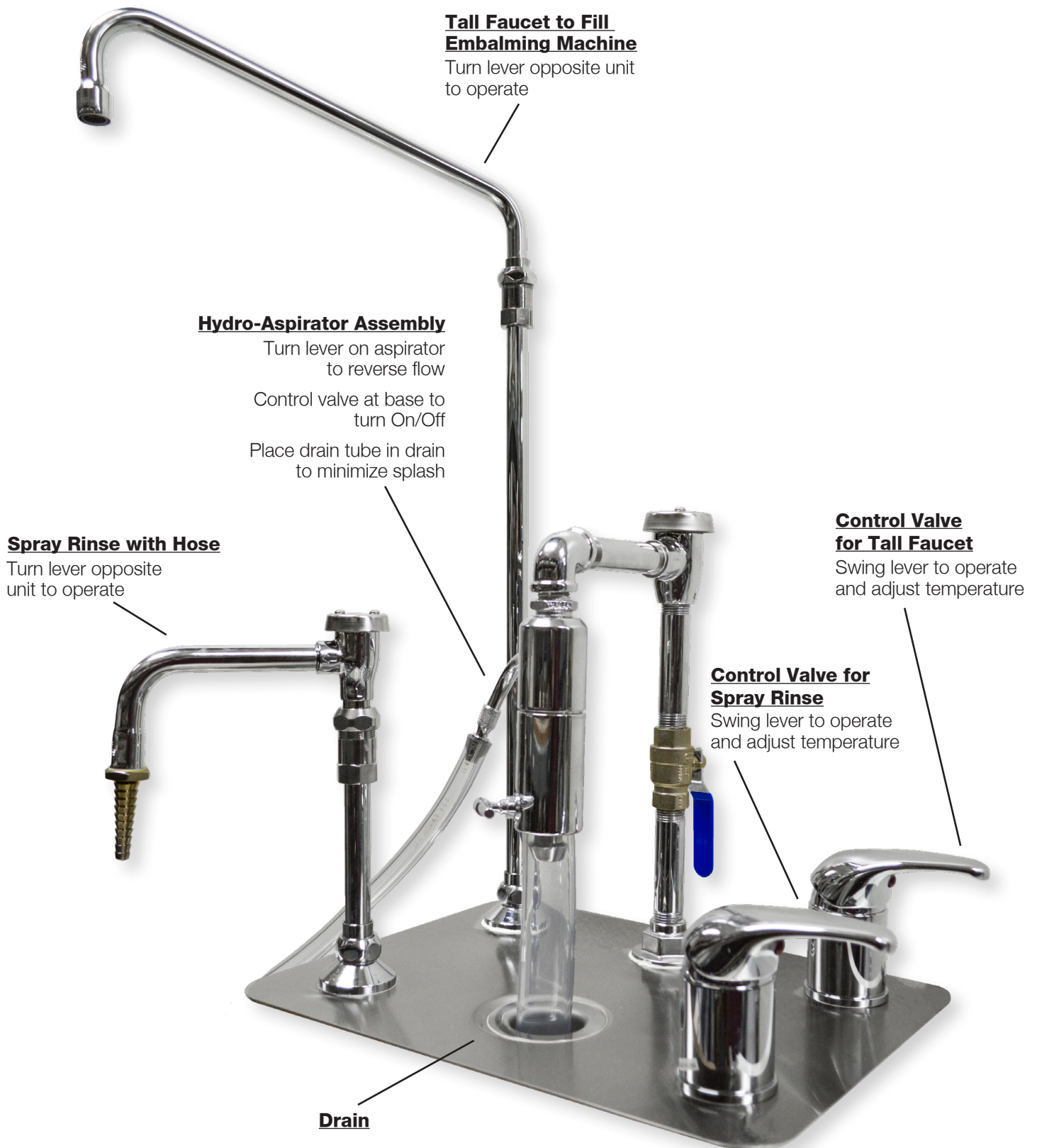


Rough-In Requirement:
 $\phi 1 \frac{1}{2}"$ [38mm] Mounting Hole





OPERATION INSTRUCTIONS



Stainless Steel Equipment Maintenance

MAINTENANCE INSTRUCTIONS

The unit requires regular maintenance and follow the manufactures directions.

DISINFECTING AND CLEANING

Clean all surfaces of the stainless steel with a hard surface disinfectant/cleaner such as Sheila Shine® or SaniZene®. Follow instructions on container.

DISINFECTING, CLEANING COMPONENTS & ACCESSORIES

Hand wash with disinfecting soap and warm water. Rinse well with clear water and dry with a towel. (Clean on a regular basis to prolong work life).

WARNING Improper maintenance can cause injury. Maintain only as prescribed in this manual. Overall, it is very simple to maintain. If you use for its intended purpose, it will provide many years of reliable service.

CARE OF STAINLESS STEEL

Stainless steel products have a directional #4 brushed finish. This finish is produced using a very fine abrasive cloth. Dragging heavy equipment across the stainless steel surfaces will cause noticeable scratching. Pitting/corrosion can occur when carbon steel products are allowed to remain in contact with the stainless steel in the presence of moisture. (Examples- Steel Wool pads left in the bottom of the sink). Stainless steel can be damaged by exposure to acids.

TYPES OF SURFACE CONTAMINANTS

Dirt - Consist of accumulated dust and a variety of contaminants. Warm water with or without a gentle detergent is sufficient. Next in order are mild non-abrasive powders such as typical household cleaners. These can be used with warm water, bristle brushes, sponges, or cleaning cloths. (Do not use carbon steel brushes or steel wool they may leave particles embedded on the surface which can lead to RUSTING.) For more aggressive cleaning, a small amount of vinegar can be added to the scouring powder. When water contains mineral solids, which leave water spots, it is advisable to wipe the surface completely with dry towels.

Fingerprints and Stains - Fingerprints and mild stains resulting from normal use are the most common surface contaminates. This affect the appearance and seldom have an effect on corrosion resistance. They can be removed with a glass cleaner or by gentle rubbing with a paste of soda ash (sodium carbonate) and water applied with a soft rag. Followed by a thorough warm water rinse and towel dry.

Shop Oil and Grease - These soils may be corrosive and may not allow the surface to maintain passivity, and so removal is a necessity. Soap or detergent and water may be used or a combination of detergent and water plus a solvent.

TYPES OF CLEANERS AND METHODS

General Precautions Avoid using abrasive cleaners unless absolutely necessary. A "soft abrasive," such as pumice, should be used. Many cleaners contain corrosive ingredients, rinse with clean water.

Clean Water and Wipe - A soft cloth and clean warm water should always be the first choice for mild stains, loose dirt and soils. A final rinse with clean water and a dry wipe will eliminate the possibility of water stains.

Solvent Cleaning - Organic solvents can be used to remove fresh fingerprints, oils and greases that have not

had time to oxidize or decompose. The preferred solvent is one that does not contain chlorine, such as acetone, methyl alcohol, and mineral spirits.

EFFECTIVE CLEANING METHODS

Commercial Cleaners - Many commercial cleaners compounded from phosphates, synthetic detergents, and alkalis are available for the cleaning of severely soiled or stained stainless surfaces. When used with a variety of cleaning methods, these cleaners can safely provide effective cleaning.

SCRATCH REPAIR

Surface scratches can be repaired using the following technique. Depending on the severity of the scratch, it may be possible to completely remove it. Sand the scratch using 120 grit emery cloth or paper and firm pressure. Always sand in the direction of the grain. Avoid the natural tendency to sand in an arc, instead sand in a perfectly straight line. Sand until the scratch is gone. Polish using 3M Scotch Brite pads - Very Fine Grade. Use the same motions as with sanding. Polish until the original finish is restored. Wash and wipe the surface completely with dry towels.

RUST REMOVAL

Rust can be repaired using the following technique. Sand the scratch using 120 grit emery cloth or paper and firm pressure. Always sand in the direction of the grain. Avoid the natural tendency to sand in an arc, instead sand in a perfectly straight line. Sand until the rust is gone. Polish using 3M Scotch Brite pads - Very Fine Grade. Use the same motions as with sanding. Polish until the original finish is restored. Wash and wipe the surface completely with dry towels.

5 Stainless Steel Mistakes NOT to Make When Cleaning

1. Do not use abrasive cleaners that will scratch the surface. Depending on the surface finish of your stainless steel, abrasive cleaners can cause scratching. A dull finish, probably will not show scratching as much as mirror or highly polished finishes. Test the cleaner in a hidden spot. It's also a good idea to work from the least risky type (water) of cleaning to the heavy duty stuff.

2. Do not forget to rinse. Gritty or dirty water can leave a residue on your finish. It can also stain or pit the surface of your stainless steel. Rinse completely. Residue from cleaning solutions left on a stainless steel surface can stain or damage finish.

3. DO NOT USE CLEANERS CONTAINING CHLORINE.

While it may be second nature to bleach everything, stainless steel and chlorine do not mix. Stay away from the bleach when you clean stainless steel. Be aware that bleach can be included in different types of cleaners. If you accidentally get a cleaner on your stainless steel you'll need to rinse it off and quickly.

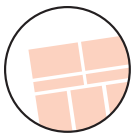
4. DO NOT USE STEEL WOOL OR STAINLESS BRUSH

These products leave little particles in the surface of the steel and inevitably these particles begin rusting and staining the surface of the steel. They also can excessively scratch the surface of your stainless steel. *Stay completely away from steel wool and steel brushes.*

5. Do not assume it's the cleaner. If you do have some spotting or staining, and you've followed all of the rules, it may not be the stainless steel cleaner. Water, especially hard water, can leave spotting and staining on stainless steel surfaces. Towel dry after rinsing can end the problem. Sometimes, even water is an enemy to stainless steel.

[illegible]

[illegible]



Warranty

WARRANTY

Mortech Manufacturing, Inc. warrants all fabrications to be free of defects due to its own workmanship and materials.

CONTINENTAL UNITED STATES:

Repair and/or replacement of materials furnished that may develop such defects, will be warranted for a period of one year from the date of shipment. Items not manufactured by Mortech Manufacturing, Inc. will receive the manufacturer's warranty.

INTERNATIONAL:

(For validation of warranty, installation location (physical address) required) Replacement of parts furnished that may develop such defects, will be warranted for a period of (18) months from the date of shipment. Shipping and Labor is not warranted. Items not manufactured by Mortech Manufacturing, Inc. will receive the manufacturer's warranty.

PARTS AND SERVICE

Customer relations and product support are important aspects of Mortech Manufacturing, Inc.

For assistance with this or any of our fine products please contact us below:

Mortech Manufacturing, Inc.

411 North Aerojet Avenue

Azusa, CA 91702

TEL (626) 334-1471

FAX (626) 334-1704

www.mortechmfg.com

info@mortechmfg.com

© COPYRIGHT MORTECH MANUFACTURING, INC.,
ALL RIGHTS RESERVED.

CAUTION

**Inspect unit and all components
for any loosening that may have
occurred during shipping**

ATTENTION

All images and Drawing in this manual
may not represent your model.
Refer to your particular project for
exact specifications

DISCLAIMER

This manual contains general instructions for the use, operation, and care of this product. The instructions are not all inclusive. Safe and proper use of this product is solely at the discretion of the user. Safety information is included as a service to the user. All other safety measures taken by the user should be within and under consideration of applicable regulations. It is recommended that training on the proper use of this product be provided before using this product in and actual situation.

Retain this manual for future reference. Include it with the product in the event of transfer to new users. Additional free copies are available upon request from Customer Relations.

Mortech Manufacturing, Inc. has made every effort to ensure that this Manual is accurate; Mortech Manufacturing, Inc. abdicate liability for any inaccuracies or omissions that may have occurred.

Information in this Manual is subject to change without notice and does not represent a commitment on the part of Mortech Manufacturing, Inc. Mortech Manufacturing, Inc. assumes no responsibility for any inaccuracies that may be contained in this Manual. Mortech Manufacturing, Inc. makes no commitment to update or keep current the information in this Manual, and reserves the right to make improvements to this Manual and/or to the products described in this Manual, at any time without notice.

If you find information in this manual that is incorrect, misleading, or incomplete, we would appreciate your comments and suggestions.

PROPRIETARY NOTICE

The information in this manual is the property of Mortech Manufacturing, Inc. Mortech Manufacturing, Inc. reserves all patent rights, proprietary design rights, manufacturing rights, reproductions rights, and sales use rights thereto, and to any article disclosed therein except to the extent those rights are expressly granted to others or where not applicable to vendor proprietary parts.

