



MODEL 1036-250-M
MOBILE ELEVATING LARGE ANIMAL
NECROPSY TABLE

CAUTION

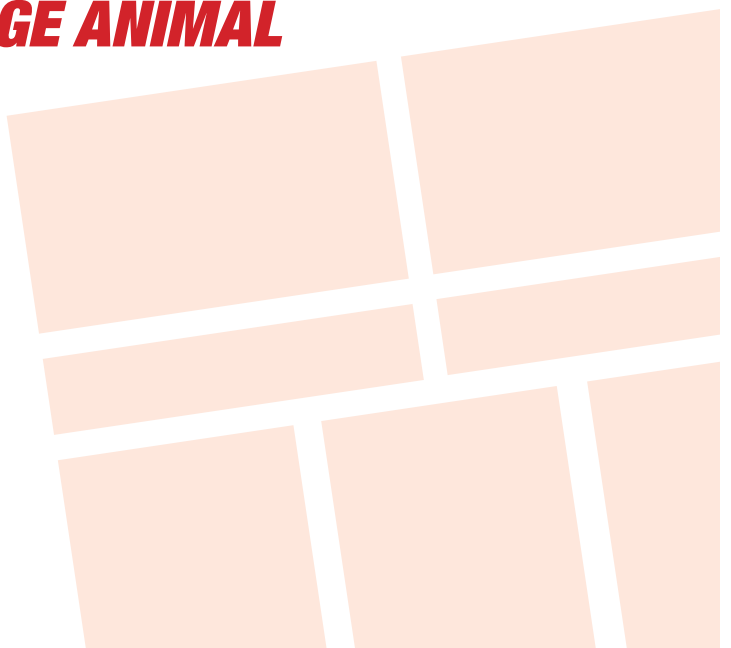
- Inspect unit and all components for any loosening that may have occurred during shipping •

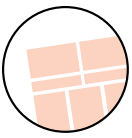
ATTENTION

Review entire manual before starting assembly

ATTENTION

All images and Drawing in this manual may not represent your model. Refer to your particular project for exact specifications





Safety information

1036-250M Mobile Elevating Large Animal Necropsy Table

It is important that the information provided in this manual is observed. These instructions should be read carefully and observed fully before installation and initial operation.

WARNING

It is crucial that any work performed on Mortech Mfg. Inc. manufactured items are carried out exclusively by skilled professionals who have the respective training. Improper use, maintenance, parts and service, or modification to the equipment may cause injury and/or damage. Use and maintain the equipment only for the purpose described in this manual. Use only prescribed approved parts and service. Use the equipment only as designed by Mortech mfg. Inc.

BLOODBORNE DISEASE NOTICE

To reduce the risk of exposure to bloodborne diseases such as HIV-1 and hepatitis when using the equipment, follow the disinfecting and cleaning instructions in this manual.

OPERATING SKILLS AND TRAINING SKILLS

Operators using the equipment needs

- ☐ A working knowledge of necessary procedures.
- ☐ The ability to carry out necessary service procedures.
- ☐ A complete understanding of the procedures described in this manual.

TRAINING

- ☐ Be trained on the use of the equipment.
- ☐ Read the manual
- ☐ Practice with the equipment before using it in regular service.
- ☐ Be tested on their understanding of the equipment operation.
- ☐ Record their training.

BEFORE USING THE UNIT

Personnel working with this unit needs to read this manual. Assemble of the unit following instructions, and perform any pre-service checks to confirm the units operates properly.

INSPECTING THE UNIT BEFORE USE

Please take time to inspect all shipment prior to signing delivery ticket. If concealed damage is discovered, save the carton and immediately contact carrier agent to initiate claim of damage.

BE SURE TO CHECK

- Are all components present?
 - Do the moving parts operate smoothly?
 - Is unit draining properly?
 - Are all nuts, bolts, and pins secured in place?
- If unit has an issue contact customer relations.

INSTRUCTION FOR HANDLING

Adhere to state and/or local certification and regulations for operation of forklift and/or pallet jack. Cargo is extremely heavy, be sure to have the necessary manpower as well as equipment to successfully unload shipment from truck. We recommend a forklift and/or pallet jack with the capacity to lift up to 2000 lbs. to remove cargo from truck.

The forklift can be used to unload receiving products safely by placing the load on the floor, maneuvering the forklift into position, tilting the mast forward to vertical position so the load will be level, lowering the load, and smoothly backing away without dragging. Once cargo is unloaded, positioning unit for installation will once again require a forklift. Read all manual and note on installation of the unit before installing.

The pallet jack can be used (with a loading dock and maneuverability on and off the transport vehicle) to unload receiving products safely. Maneuvering the pallet jack into position (in the appropriate position within the pallet), lifting the pallet then driving the pallet jack off the truck and safely into the place of installation.

Range of Environmental Condition

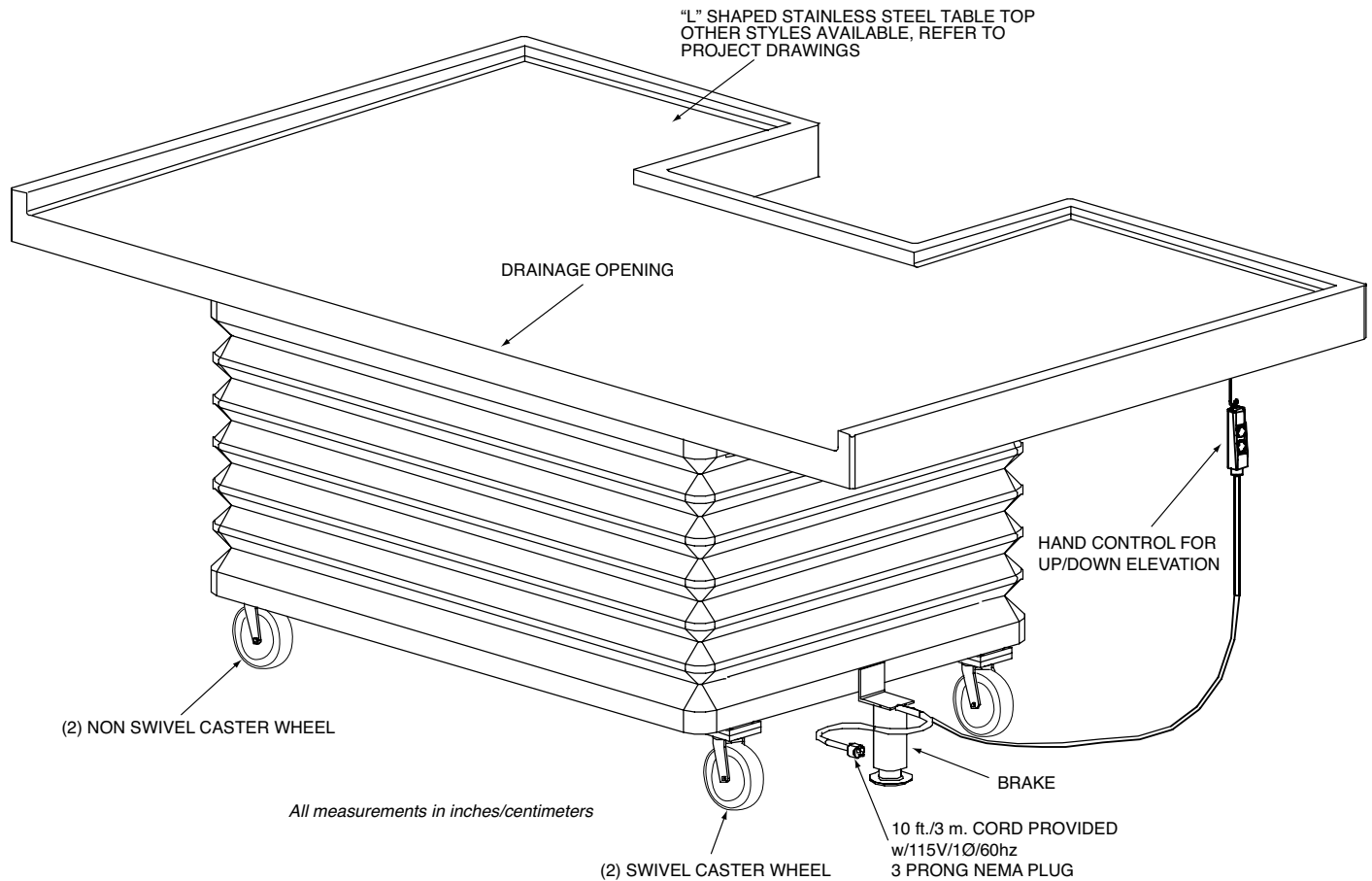
Mortech Mfg. Inc. equipment shall be placed in a controlled environment (housing or housed unit) hindering the weathering effects on the installed units. The units will have minimal corrosive and eroding factors that can break down the stability and operation of Mortech's equipment. The impact on the unit by the operator utilizing water or corrosives in the medical procedures can be controlled and responsibility for the cleaning and maintenance placed upon that person. The effects of anthropogenic (man-made) gasses on the environment, such as carbon dioxide (CO₂) that will be omitted from the unit should be minimal.

Due to continuous innovation and product development this installation guide is subject to change without notice.

Please save these instructions for later use.

1036-250M Mobile Elevating Large Animal Necropsy Table

Parts listing



STANDARD DESIGN FEATURES

- U-shaped table is designed for use as a large animal necropsy table. It features all heavy gauge stainless steel construction
- The unit is designed to handle a centralized load up to 5,000 lbs./2267 kg. and an offset load up to 2,500 lbs./1113 kg.
- The inner frame support is fabricated from heavy gauge steel tubing
- The table top and inner frame support are attached to an electrically powered hydraulic scissor lift. The lift has a capacity up to 6,000 lbs./2721 kg. (~115v / 60 Hz / 1 Ph - 1 hp motor)
- A drain opening located on the back edge of the table. The back edge is the side opposite the "U" shaped indent
- Accordion style bellows surround the scissor lift allowing for complete washdown of the unit
- Easy to use up/down elevation control
- Provided with (2) swivel and (2) non swivel casters
- Floor brake to secure in place
- Tabletop can be sized to your specific project requirements

Optional Accessories

- Type 316 stainless steel (top only)
- Removable measuring rule
- Instrument tray
- Tie down bars w/adjustable cleats
- Nylon strap for tie down
- Polyethylene cutting boards
- Retractable electrical cord reel

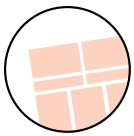
Options

Based on available space. When planning an order, we will assist you in selecting options to complete your system.

Please feel free to contact us.

Custom layout and designs are available.





Parts listing

1036-250M Mobile Elevating Large Animal Necropsy Table

**1036-250M
RAISED**



**1036-250M
LOWERED**



1036-250M SINK

Can be placed as a part of the table.
Sizes can be for customers request.



SINK DRAIN HOSE

Ships loose, attach and
cut to desired length.



1036-250M Scissor Lifts Installation, Operation and Service Manual

INTRODUCTION

This manual attempts to provide all of the information necessary for the safe and proper installation, operation and maintenance of Presto Lifts Inc. XL, X3W or X4W Series Scissor Lifts. It is important that all personnel involved with the installation, maintenance or operation of the scissor lift read this manual. Where unique situations arise, that are not covered in this manual, call Presto Lifts for further instructions. Additional manuals are available upon request or on our web site at www.prestolifts.com.

The scissor lift has a nameplate that provides the load capacity ratings, serial number and model identifications. Please refer to these numbers when ordering parts or requesting further information.

The Presto Lifts XL, X3W or X4W lifts are designed for lifting, lowering and positioning a variety of loads.

WHERE UNIQUE SITUATIONS ARISE, THAT ARE NOT COVERED IN THIS MANUAL, CALL PRESTO LIFTS FOR FURTHER INSTRUCTIONS.

The XL, X3W or X4W Series is designed for inplant/nonhazardous location use only. These units are not for personnel lifting.

SAFETY

The safety of all persons installing, using, servicing, or working near the unit is of paramount concern to Presto Lifts. The lift is a powerful machine with moving parts, and is capable of causing personal injury if proper precautions are not taken. Therefore, throughout this manual, Presto Lifts has identified certain hazards, which may occur in the use of the unit, and provided appropriate instructions or precautions that should be taken to avoid these hazards. In some cases, Presto Lifts' has also pointed out the consequences that may occur if Presto Lifts' instructions or precautions are not followed. Presto Lifts uses the following nationally recognized system for identifying the severity of the hazards associated with its products:

DANGER – Immediate hazard that will result in severe personal injury or death.

WARNING – Hazard or unsafe practice, that could result in severe personal injury or death.

CAUTION – hazard or unsafe practice, that could result in minor personal injury or property damage.

In the interest of safety, please read the entire manual carefully. You must understand the material in this manual before you install, use, or service the unit. If you have any question about any of the instructions in this manual, please contact Mortech Mfg Inc.

INSTALLATION INSPECTION

Upon receipt of the XL, X3W or X4W Series Scissor Lift, inspect the equipment completely to determine if there is any shipping damage, and that the lift is complete. Presto Lifts Inc. tests and inspects every piece of equipment prior to shipment. If damage is apparent, a freight claim must be filed with the freight company. Do Not use the lift if there appears to be any damage. With the lift in a collapsed position, check the following:

- Check for signs of damage especially to the electrical and hydraulic components.
- Check all connections for tightness. Is there hydraulic fluid visible?
- Check base frame for flatness.
- Inspect for any bent or damaged metal parts.

INSTALLING

Before starting, be sure that the electrical system is wired and is in full compliance with local electrical codes and ordinances. Read all of the instructions prior to starting the lift.

1. Floor Installation

- a). Make sure that the floor in the installation area is level, stable and free from dirt and surface defects.
- b). Place lift in exact operating position.

CAUTION! When moving the lift, do not ever attempt to pick it up by the platform. The lift should be picked up by the base frame only. The use of a strap sling is suggested. If the lift has optional lifting eyebolts, attach a chain spreader and raise the lift from a center position. Be sure the eyebolts are secured in place with locking nuts prior to lifting.

- c). Make sure that the complete base of the lift is in contact with the floor. In order to provide complete contact with the floor, the base may be shimmed or grouted.

CAUTION! Do not spot shim. The complete base must be in contact with the floor or shims.

- d). If the lift is provided with anchor holes or brackets, be sure the lift has been placed in the exact operating position before spotting or drilling holes for anchor bolts. Bolt the lift securely before using it.

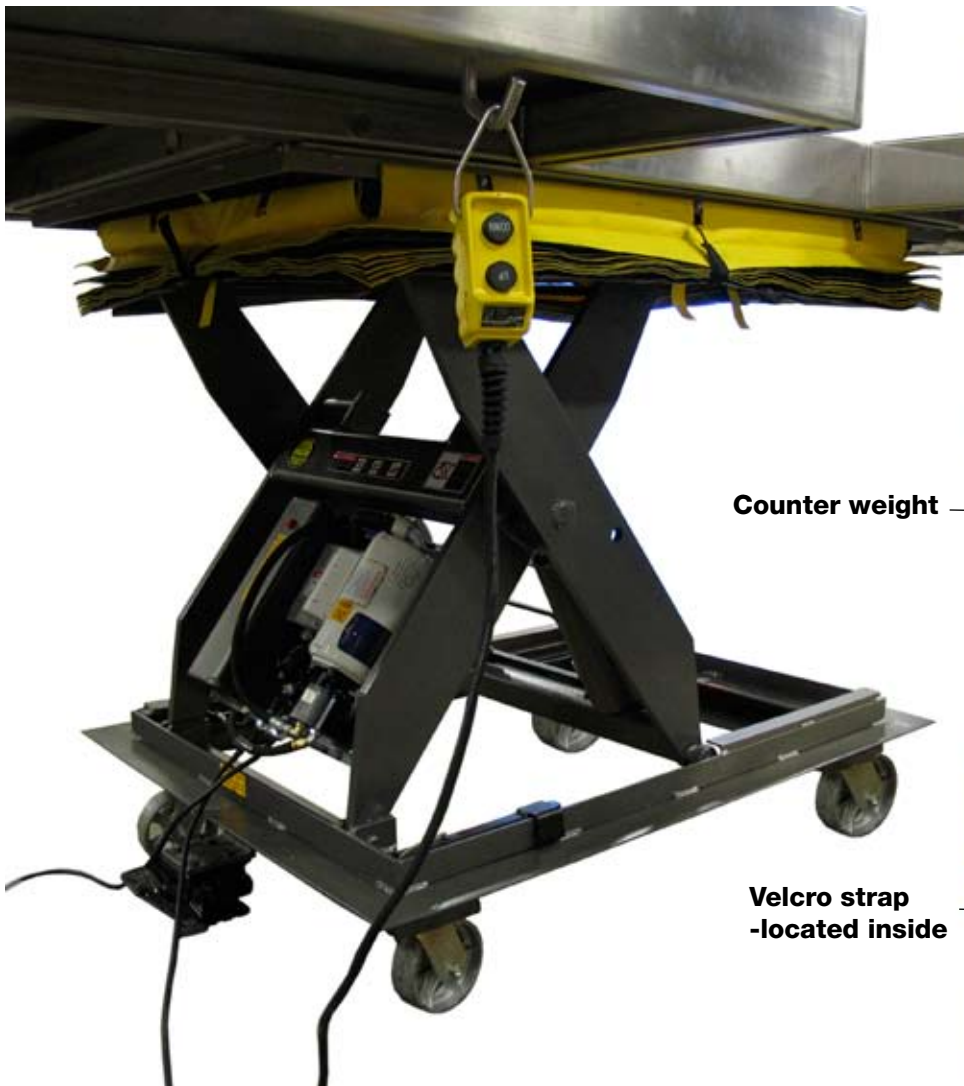
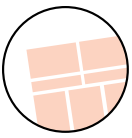
- e). For lifts with remote power units, locate and bolt the power unit in place, so as to provide easy access. Do not obstruct the operator's work area. Make hydraulic connections according to the information contained in this manual.

- f). Electrical connections must be made according to the electrical schematics and information contained in this manual and in compliance to local codes and ordinances.

1. Pit Mounted Installation

- a). Build pit to standard pit dimension as outlined in Figure 2, Page 6, paying careful attention to raceway, sump, clearance and height requirements.
- b). The remaining steps are the same as required for floor installation.





Counter weight

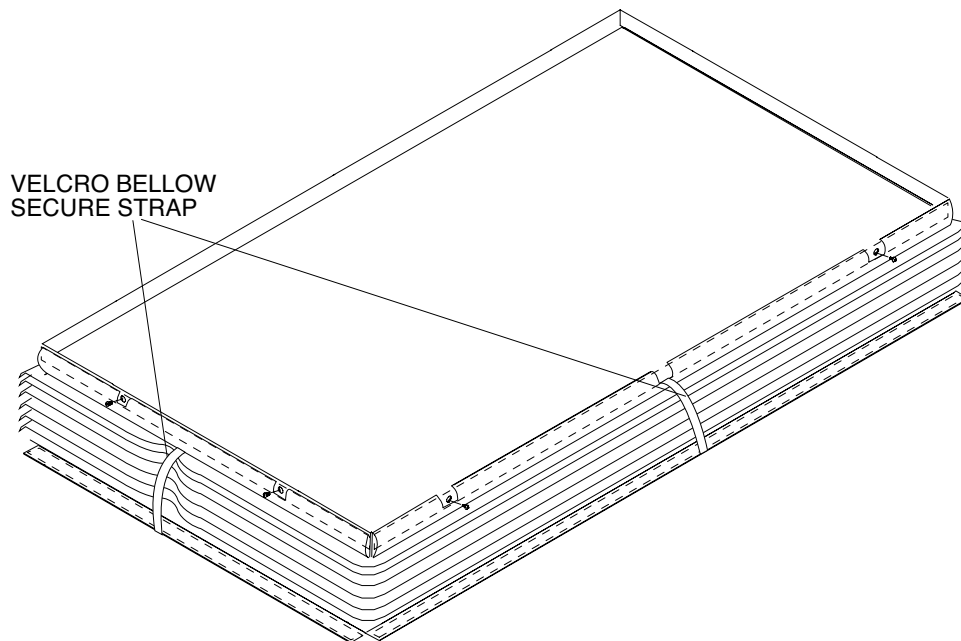
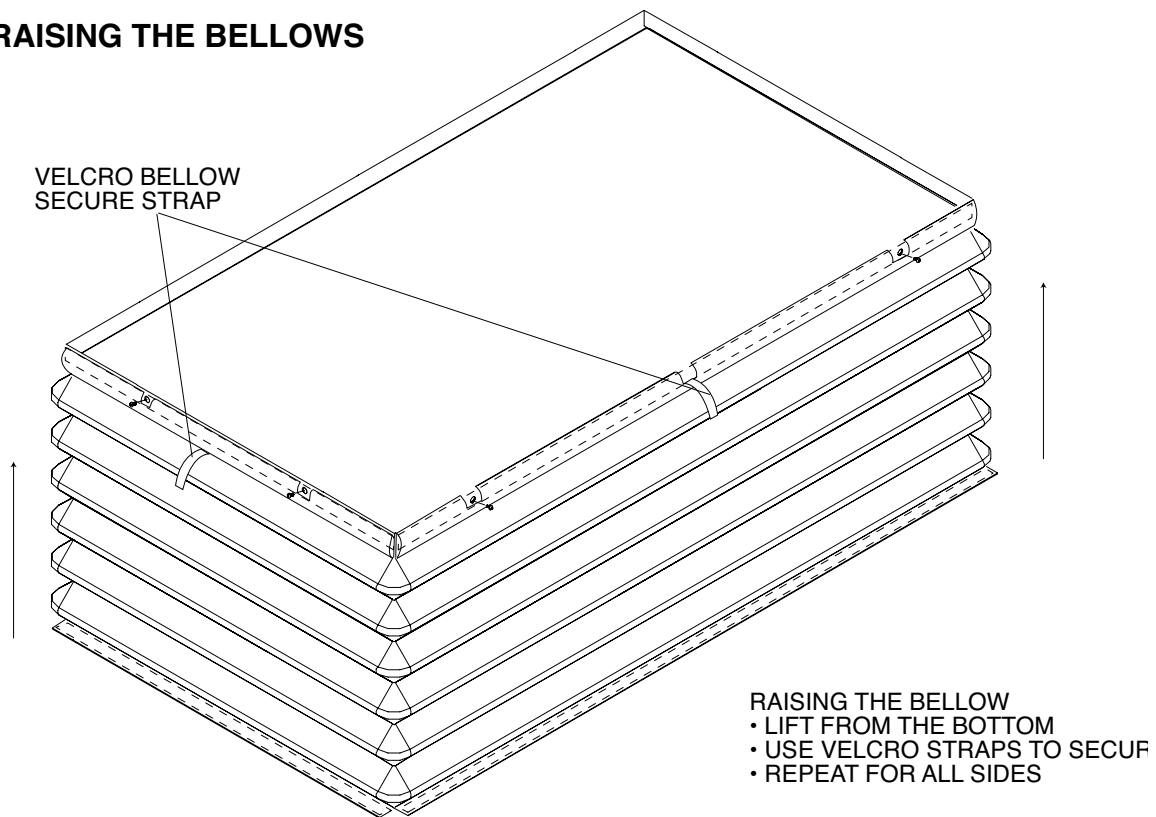
Velcro strap
-located inside

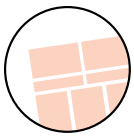


Raising the Bellows

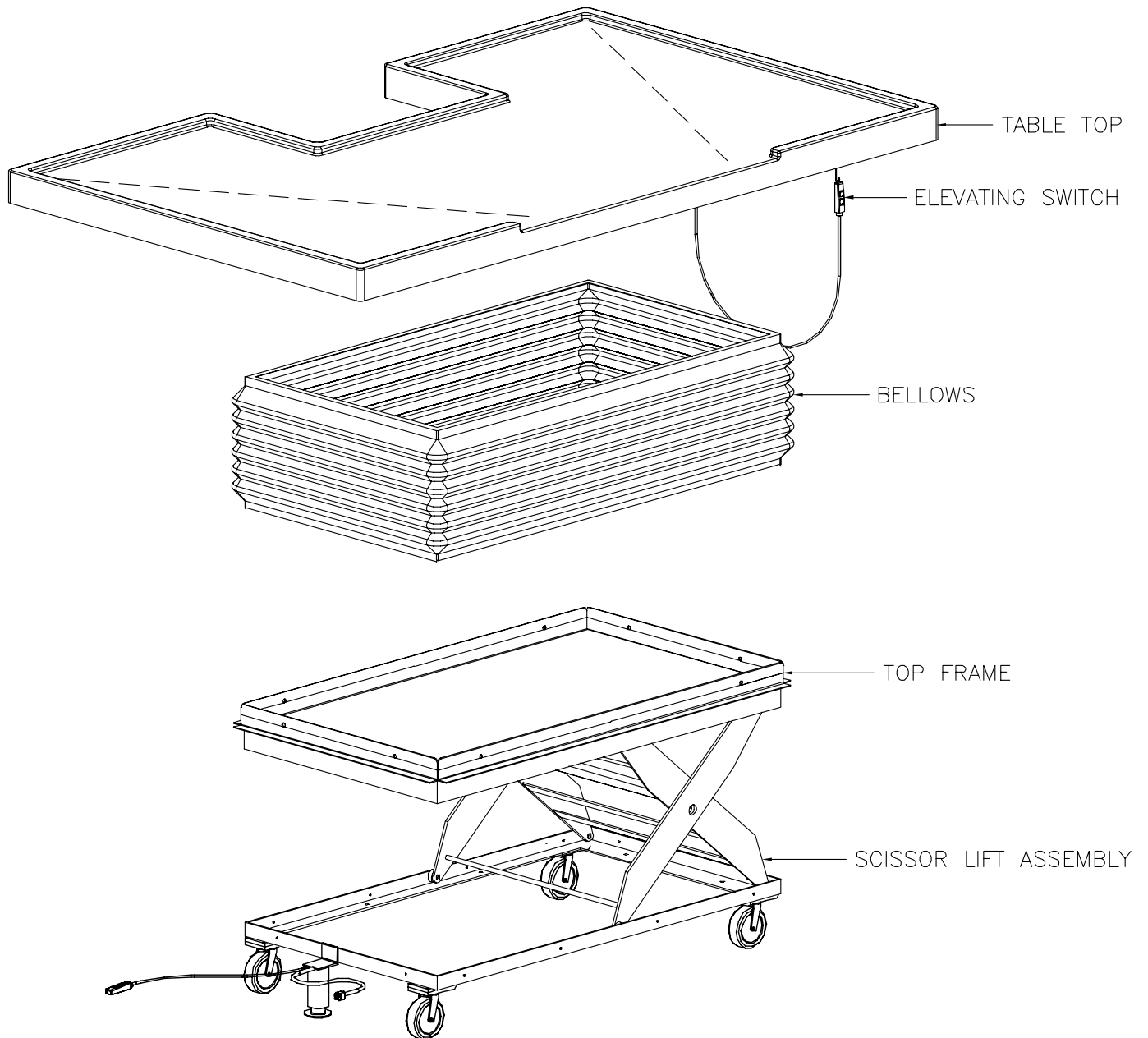
- You can access the scissor lift beneath the bellow by lifting the bellows upwards toward the table top (A).
- While you are lifting beware of the metal bars at the bottom of the bellow (B-Counter weight).
- Located inside and toward the top of the bellows is one (1) velcro strap. After lifting the bellow strap, bring the tow velcro straps together and secure. Continue until you have secured all four sides.
- When all the sides are secure the lift will appear as the picture above. When released the lift will appear as (D).

RAISING THE BELLOWS



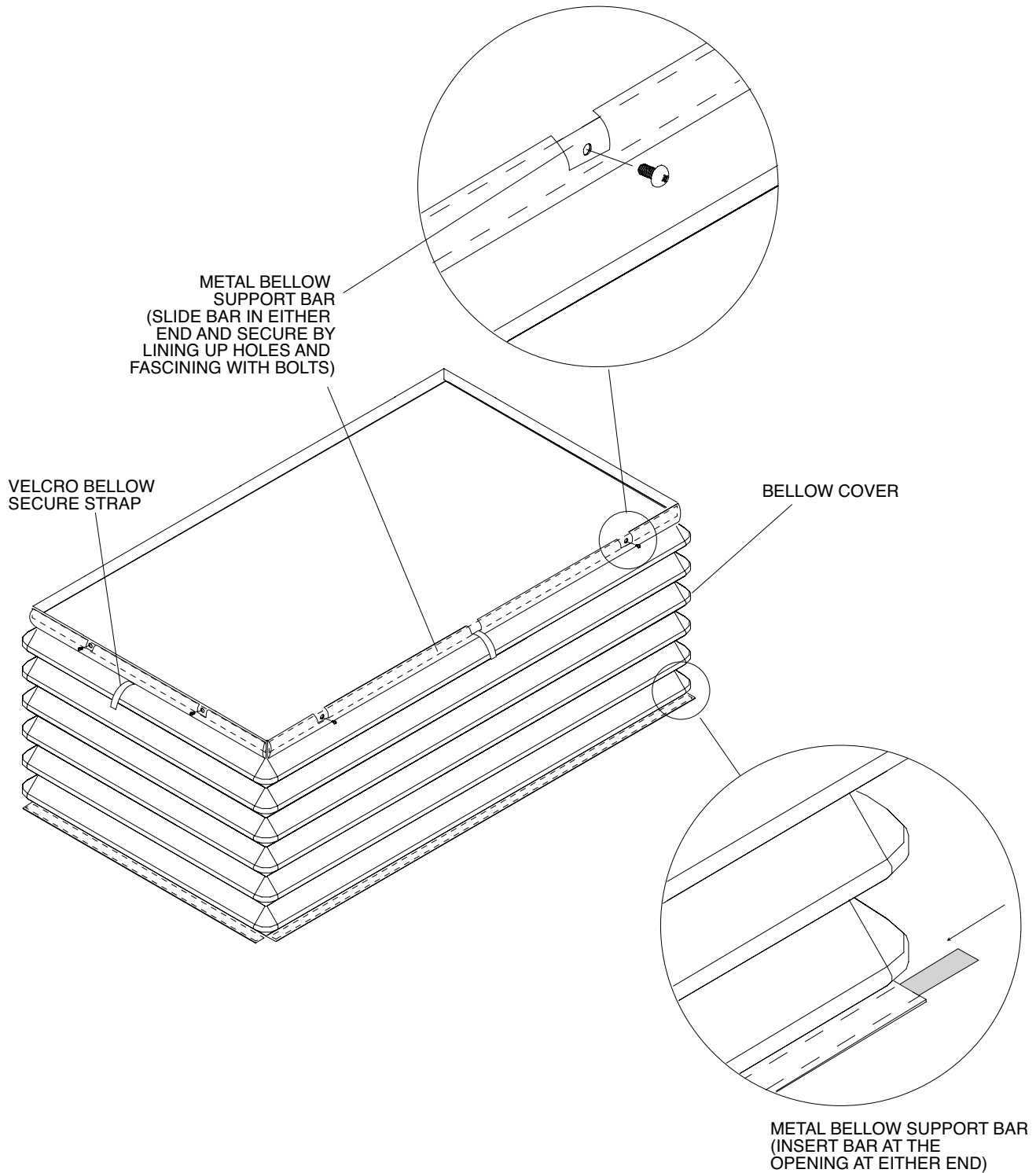


Typical Assembly MODEL 1036-250M



**1036-250M Mobile Elevating Large
Animal Necropsy Table**

Installation



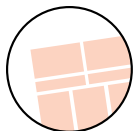
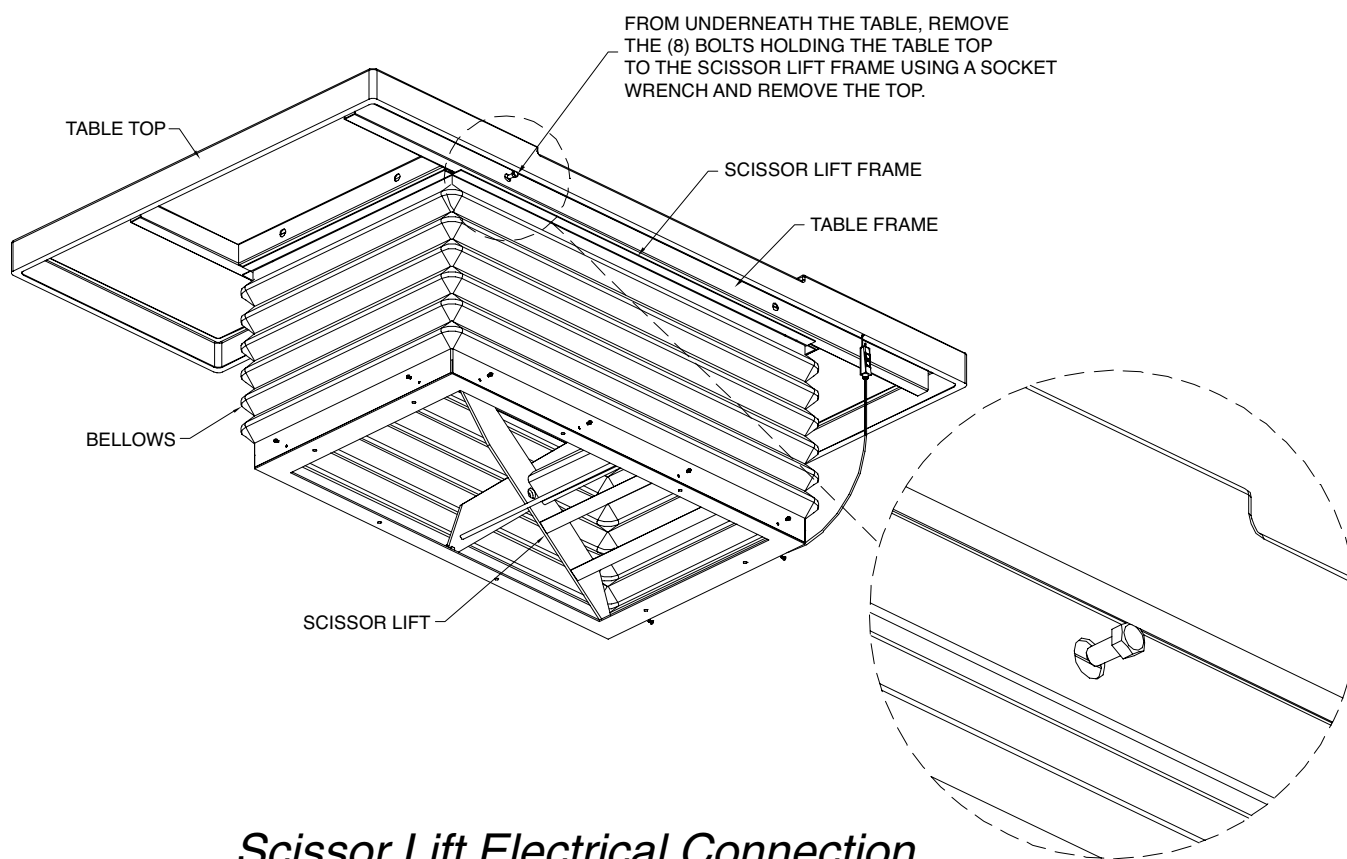
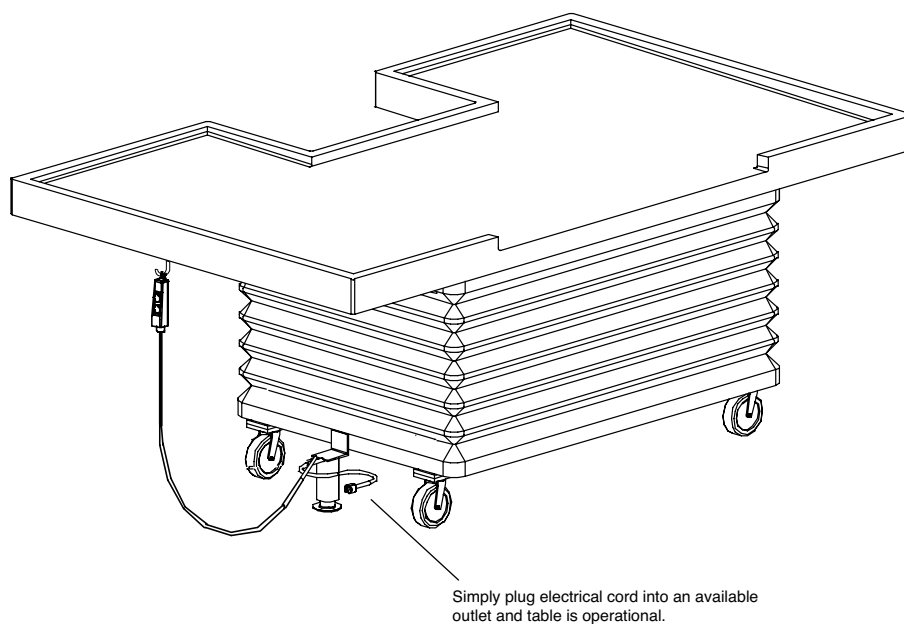


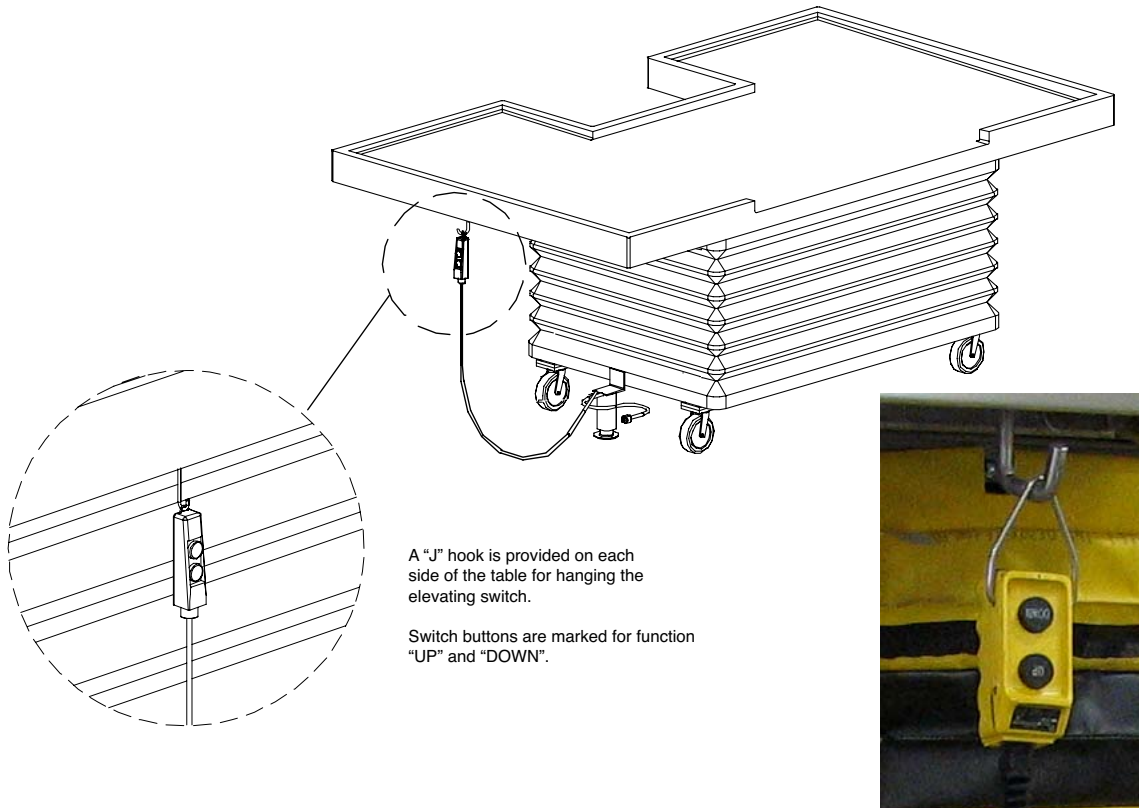
Table Attachment/Removal



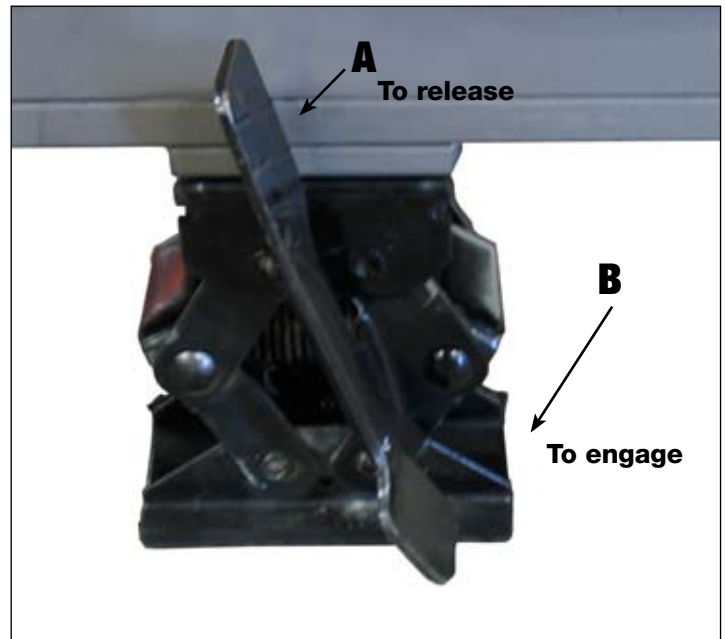
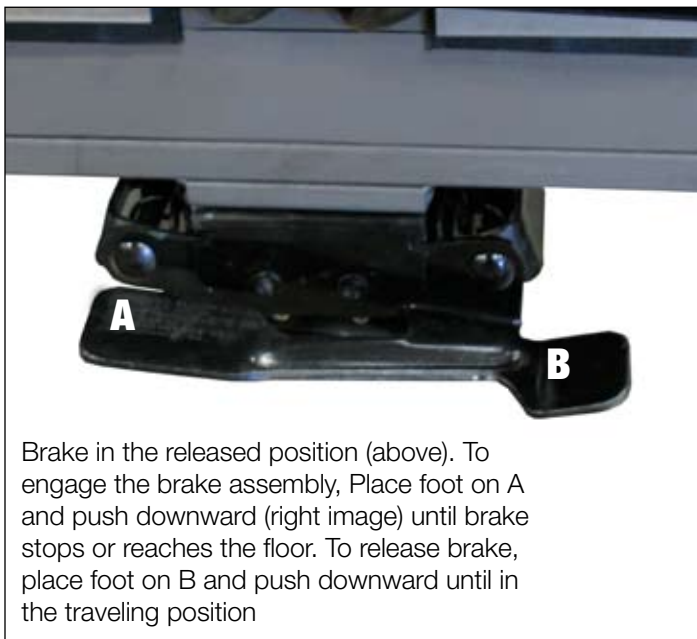
Scissor Lift Electrical Connection

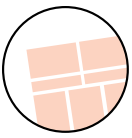


Elevating Switch



Foot Brake Assembly





Electrical

1036-250M Mobile Elevating Large Animal Necropsy Table

WARNING!

Do not install lifts in pits unless they have approved bevel edge top or electro-mechanical toe guards.

CAUTION!

Lifts with toeguard and oversized platforms must be secured with at least 4 anchor bolts with a minimum of 2000-lb pullout strength for each bolt.

ELECTRICALS

The motors on XL, X3W or X4W Scissor Lifts are special intermittent duty motors with high pull up torques. These motors require heavier duty electrical controls than standard motors.

CAUTION!

All wiring must conform to local codes and must be performed by licensed electricians. The following chart recommends power sources for various motors supplied with Scissor Lifts.

MOTOR SIZE	FUSE	BREAKER
1 HP 120 Volt 1 PH	25 AMP	20 AMP
1 HP 240 Volt 1	PH 25 AMP	20 AMP
1-1/2 HP 208-240 Volt 3 PH	15 AMP	10 AMP
1-1/2 HP 460 Volt 3 PH	7-1/2 AMP	5 AMP

Schematics for wiring motors

Figure 6 for 120 volt 1 PH

Figure 6 for 240 volt 1 PH

Figure 7 for 208/240/460 volt 3 PH

WARNING!

Do not tamper with or remove cover of the electrical junction box. Only authorized, qualified personnel should service the electrical system.

D. HYDRAULICS:

1. Use hydraulic oil only for the lift. The lift has been supplied with Citgo AW32.
2. Before using the lift, check the hydraulic oil level and add oil if necessary. Check fittings for tightness.
3. External power pack units also require that the hydraulic lines be blown out with clean air. Then attach to hydraulic fittings per hydraulic schematic. Figure 7.

CAUTION!

XL, X3W or X4W Scissor Lifts are designed for normal factory environments. Where below freezing conditions may exist, special fluid must be used.

Contact Presto Lifts for further information when freezing conditions exist.

WARNING!

Do not use automotive hydraulic, brake or transmission fluids. They will damage seals and pose a serious fire hazard.

E. TESTING THE LIFT WITH NO LOAD:

1. Before testing the lift, clear the area of any loose material. Be sure the lift has no obstruction above it or on any side. Using the controls provided, briefly operate the lift (5-10 seconds). If the lift begins to rise with a humming sound and functions properly, continue to the full upright position.

CAUTION!

If the lift does not rise immediately, or there is any operational problem, stop it immediately. Before continuing, check the rotation of the pump and motor and the voltage at motor terminals; again briefly operate the lift. If the lift does not move smoothly with a humming sound, stop and review the procedures in the section on troubleshooting (5B).

2. After raising the lift completely, lower the lift. It should move slowly and smoothly without a humming sound. If the lift operates properly, raise and lower the lift and stop at different levels to get a good perspective on the lift's operations and movements.

OPERATION

METHOD OF OPERATION:

All XL, X3W or X4W Scissor Lifts are provided with a special relief valve and are factory preset for the maximum safe capacity of the lift. Activating and holding the up switch will energize the motor. The motor is attached to a positive displacement pump, that draws hydraulic fluid from the reservoir and transfers it under pressure to the cylinder. This forces the piston forward and the scissor legs to separate and raise the platform, releasing the up button will stop the lift. A check valve between the pump and piston holds the table in position. Depressing and holding the down switch will energize a solenoid, that allows the oil from the cylinder to return to the reservoir through a preset flow control. This allows the lift to lower smoothly and at a controlled speed.

OPERATING INSTRUCTIONS:

In order to operate the lift follow these operating procedures.

Read and understand all the instructions before operating. If the lift has modifications or accessories, read and understand their functions.

- 1). Load the lift correctly.
 - a). Do not load the lift while it is running.
 - b). Do not exceed the maximum rated load (note that load capacity is reduced due to side or end loading.)
 - c). Place load in the center of table.
 - d). If the load is unstable or may become unstable, fasten it into position.

- 2). Operate the lift.
 - a). To raise the lift, press and hold the up button.
 - b). To lower the lift, press and hold the down button.
 - c). Release the button to stop the lift.
- 3). Wait until the lift has come to a complete stop before unloading the lift.
- 4). Stand clear of lift when operating it in order to avoid injury.

WARNING!

- a). Do not stand, sit or climb onto the lift.
- b). Do not load or unload a moving lift.
- c). If the lift fails to move or exhibits strange movements or sound, stop immediately. Do not operate the lift until it has been checked and repaired.
- d). Obey all warning labels.

MAINTENANCE

Generally, the XL, X3W or X4W Series Scissor Lifts require very little maintenance. Reasonable care will result in excellent trouble-free performance.

WARNING!

Never go under or service lift with a load on the table or with the scissor mechanism unblocked. Always service the lift in a down position.

ROUTINE MAINTENANCE

All routine maintenance should be performed monthly and can be performed on the standard XL, X3W or X4W Series Scissor Lifts in a lowered height position. Before performing any maintenance, shut the power off. Then raise the top over its center position, secure in place and perform the routine listed (1 through 7).

For lifts with oversized or beveled edge platforms, the lift must be serviced in an up position. The following procedure must be followed prior to servicing:

- a). Raise the lift to the full up position.
- b). Place the safety chock in position as shown in Figure 1.
- c). Lower the lift until the wheels come in contact with the chock.
- d). Shut the power off.
- e). Perform the routine listed (1 through 7).

WARNING!

Wood blocks should be cut to the proper length and be of a hard wood variety such as oak or ash. Check for defects or damage to the blocks prior to each usage. These blocks are to be used only if the maintenance chock has been damaged or misplaced.

- 1). Check oil level. Add oil if necessary.
- 2). Check rollers for signs of wear. Replace if damaged.
- 3). Check snap ring and shield. Replace if damaged.

- 4). Check hydraulic lines for damage or leaking. Replace if damaged.
- 5). Check for oil spots on the floor. Trace leaks to the proper fitting and tighten.
- 6). Check wiring for damage. Replace immediately if any sign of wear is evident.
- 7). Bearings on these lifts are permanently lubricated and require no servicing. Look for any signs of wear.
- 8). Check that all pre-cautionary labeling is in place and legible. Replace damaged labels immediately. See Figure 8.

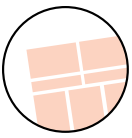
**TROUBLESHOOTING MAINTENANCE
LIFT WILL NOT MOVE**

1. No operational noises:
 - a). Check power switch, fuses and overloads.
 - b). Check voltage at motor -- motor may have failed.
2. Operational noises:
 - a). Lift may be overloaded or jammed. Check load weight and obstructions.
 - b). Motor (3 phase) single phasing. Check voltage at motor terminals.
- c). Motor (3 phase) reversed. Reverse 2 lines.
- d). Motor (1 phase) low voltage. Check voltage at motor terminal.
- e). Oil shortage -- reservoir low or oil line failure. Repair or replace.
- f). Down valve open, check wiring, remove and run lift.
3. Motor overheats:
 - a). Excessive cycle rate (15 per hour max.).
 - b). Low voltage -- check voltage at motor.
 - c). Oil starvation -- check filter in reservoir.

LIFT OPERATING SLOWLY:

1. Up cycle
 - a). Oil starvation -- check filter in reservoir.
 - b). Oil viscosity -- oil is too heavy or too thin.
 - c). Air in cylinder -- cycle lift with no load 2 times and hold down button for 20 seconds after bottoming out on each cycle.
2. Down cycle
 - a). Down valve dirty -- remove and clean. Check oil condition, replace if dirty.
 - b). Pinched hydraulic lines.
 - c). Oil viscosity is too heavy.
3. Lift raises, then slowly lowers without power:
 - a). Down valve dirty. Remove and clean.
 - b). Leaking hydraulic lines or fittings (check for telltale oil spots).
 - c). Check valve in pump -- may not be seating. Requires new pump.
4. Lift will not lower when energized:
 - a). Down solenoid faulty. Check voltage-may be low or wrong voltage for coil. Check continuity of coil (burned out).





SERVICE

REPLACING CYLINDER SEALS:

(Seal kits are listed on page 15)

1. Lower the lift to its lowest position and hold down switch for an additional 10 to 20 seconds. Then lift the top to its over center position and secure.
2. For lifts with oversized platforms, the cylinder is replaced while the lift is in an up position. To position lift in the up position, follow instructions for routine maintenance (5A a-e).
3. Disconnect the electrical power.
4. Disconnect the hydraulic hose from the cylinder and cap the line to prevent hydraulic fluid loss.
5. Loosen the set screws holding the cylinder pin.
6. Remove the cylinder pin.
7. Lift the cylinder out of the lift.

CAUTION!

Hold the cylinder securely while removing the pin to prevent it from falling to the floor.

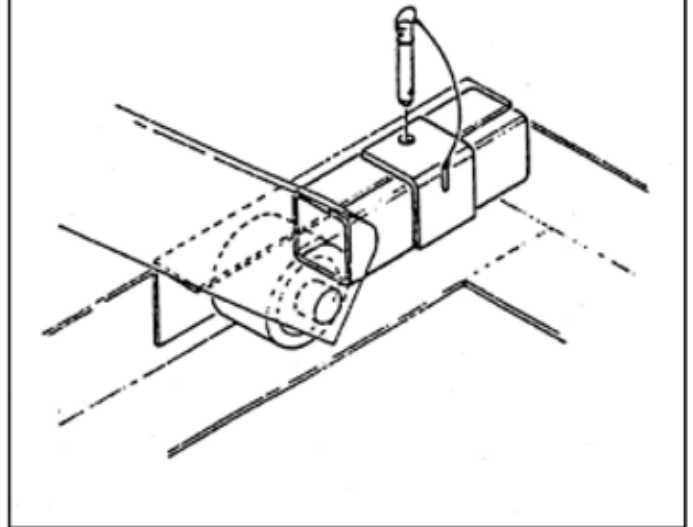
8. Clamp cylinder securely at the base end.
9. Completely collapse cylinder piston.
10. Push gland into the cylinder 1/8" - 3/16".
11. Remove retaining ring.
12. Remove piston rod, piston and gland from cylinder.
13. Remove rod nut, piston and gland.
14. Remove and replace seals and wipers.
15. Assemble piston and gland to piston rod.
16. Assemble rod nut to piston rod and torque to 100 ft./lb.
17. Lubricate piston and seals and install cylinder.
18. Insert retainer ring.
19. Install cylinder and hydraulic lines.
20. Fill reservoir.
21. a). For the lifts serviced in lowered position, lower tabletop completely.
b). For the lifts serviced in the up position, raise table and remove chocks.
22. Cycle lift 2-3 times adding oil if necessary.
23. Recheck reservoir oil level.

REPLACING LEG ROLLERS

(Seal kits are listed on page 11)

1. a). For standard lifts, lower lift to its lowest position and hold down switch for an additional 10-20 seconds. Then lift the top to its over center position and secure.
b). For lifts with oversize or beveled platform secure the lift as follows: Raise the lift to its full raised position. Place a steel 7/8" or 1" bar through both outer scissor leg holes. Lower the lift until the inner legs are firmly in contact with the bar.
2. Disconnect electrical power.
3. Raise the leg assembly 2" and support with the yellow supplied safety chock.
4. Remove retainer clips, shield and rollers.
5. Clean and lubricate axle. Replace with new rollers, shields and clips.

**FIGURE 1:
MAINTENANCE CHOCK**



6. a). For lifts serviced in a lowered position lower the tabletop completely.
b). For lifts serviced in the up position, raise table slightly and remove steel bars.

QUALITY ISSUES

Should you feel there is a quality problem, please contact the seller to ask questions and gather information on how to rectify the issue. Presto Lift Inc. reserves the right to determine potential credits, as a result of factory defects, based on its inspection of the merchandise.

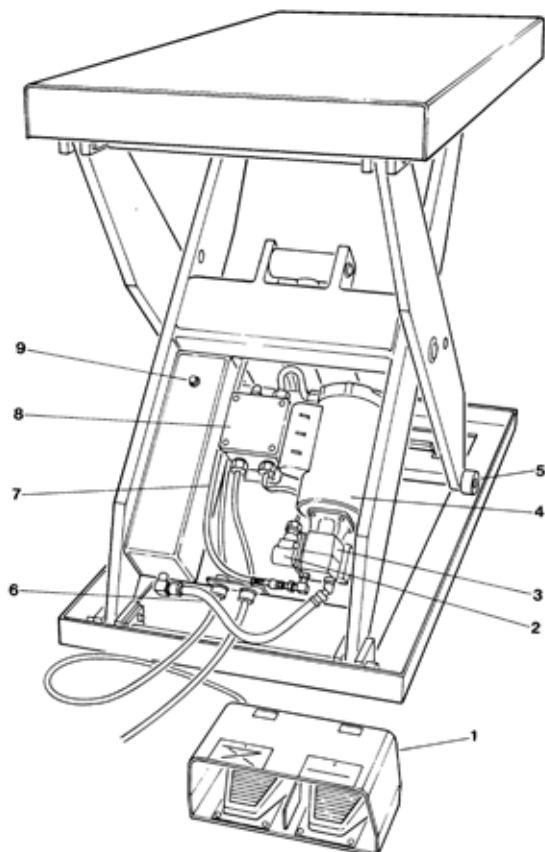
GENERAL

All products shipped from our factory have passed Quality Assurance inspection and testing. The carrier of choice has signed for, and accepted the product in new working condition. The customer should inspect to ensure it is not received damaged, has no concealed damage or is not incomplete. Parts orders are determined to be complete based upon Presto Lift, Inc. inspection sheets and carrier shipping weights.

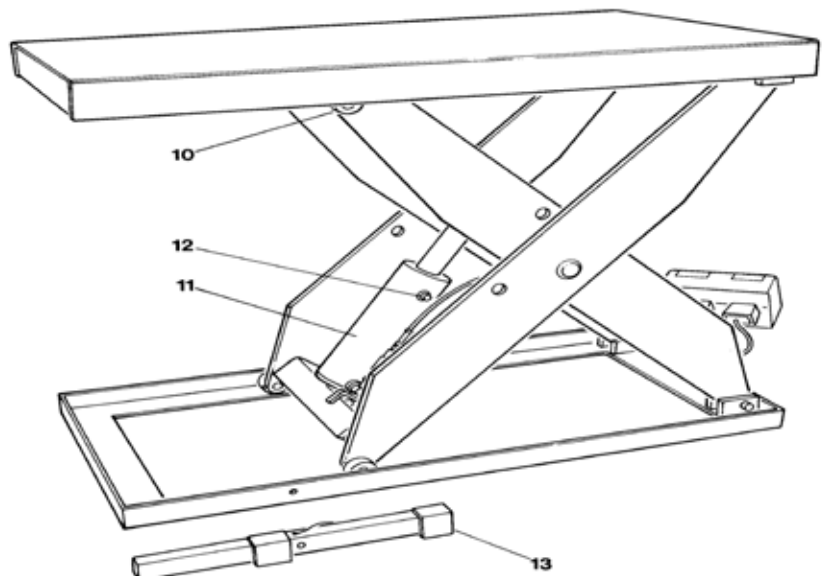
XL SERIES PRODUCT ILLUSTRATIONS
COMPONENT IDENTIFICATION

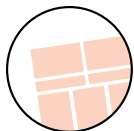
ITEM NO.	PART NUMBER	DESCRIPTION
1	E307	Push button
1	E308-E36	Foot control with Cover (12 ft. cord)
2	1000-176	Down Solenoid
3	1000-034-10	Hydraulic Pump Assembly (1 gallon/min.)
4	E255R	Electric Motor (115/1/60)
5	1000-067	Roller Assembly Kit
6	See Page 15	Hydraulic Line
7	See Page 15	Reservoir -- Oil Tank
8	EX281	Electrical Box -- Nema 12 (115V Only)
9	N1220	Reservoir Fill cap
10	1000-067	Roller Assembly Kit
11	See Page 15	12 Cylinder
12	N1215	Cylinder Breather Cap (KL 24 only)
13	See Page 15	Maintenance Chock
14	1000-176	Valve Stem
15	1000-056-01	115V Coil
16	1000-056-02	24V Coil

FIGURE 2: XL SCISSOR LIFTS



ITEM#	DESCRIPTION
1	FOOT CONTROL
2	DOWN SOLENOID COIL
3	PUMP
4	MOTOR
5	ROLLER
6	SUCTION LINE
7	PRESSURE LINE
8	CONTROL PANEL
9	FILL PLUG
10	UPPER ROLLER
11	CYLINDER
12	VENT
13	ROLLER CHOCK





X3W and X4W PRODUCT ILLUSTRATIONS

FIGURE 3 -- EXPOSED CYLINDER ASSEMBLY

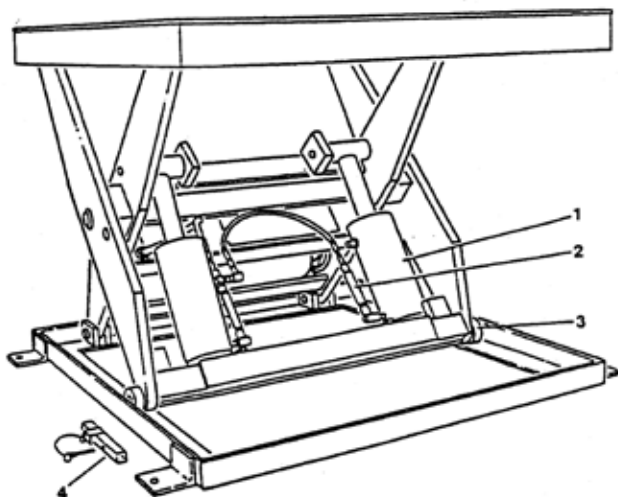
ITEM NO.	PART NUMBER	DESCRIPTION
1	See Page 15	Hydraulic Cylinder
2	1000-086	Safety Velocity Fuse
3	1000-067	Roller Kit Assembly
4	See Page 15	Maintenance Chock

FIGURE 4 -- EXPOSED POWERPACK

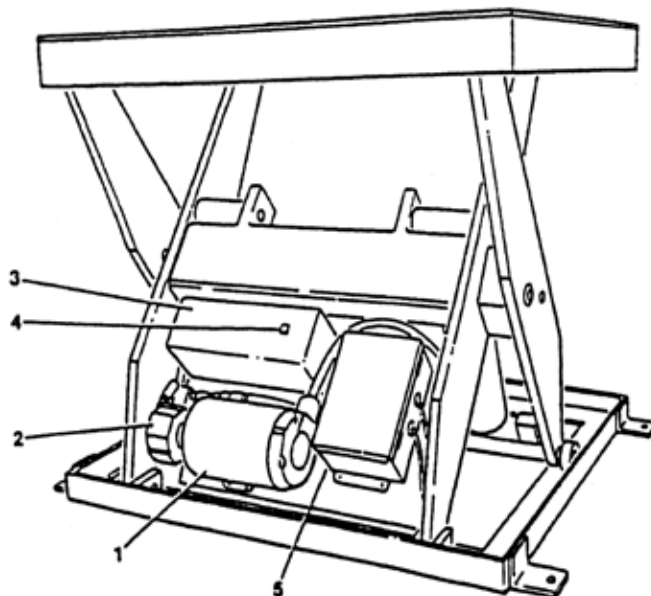
ITEM NO.	PART NUMBER	DESCRIPTION
1	E255R	Motor (115/1/60)
2	1000-034-10	Hydraulic Pump Assembly (1 gallon/min.)
3	See Page 15	Reservoir -- Oil Tank
4	N1220	Reservoir Fill Plug
5	EX281	Electric Box (115V only)

**FIGURE 4
EXPOSED POWERPACK**

**FIGURE 3
EXPOSED CYLINDER ASSEMBLY**



ITEM#	DESCRIPTION
1	CYLINDER
2	VELOCITY LOCK OR EXCESS FLOW PROTECTOR
3	ROLLER
4	WHEEL CHOCK



ITEM#	DESCRIPTION
1	MOTOR
2	PUMP
3	RESERVOIR
4	FILL PLUG
5	CONTROL BOX

1036-250M Mobile Elevating Large Animal Necropsy Table

Electrical

FIGURE 5 WIRING SCHEMATIC 115/1/60 power with 20 AMP PLUG

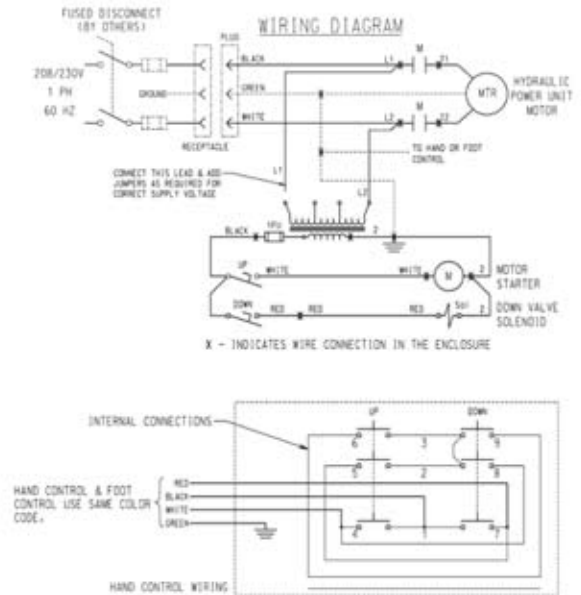
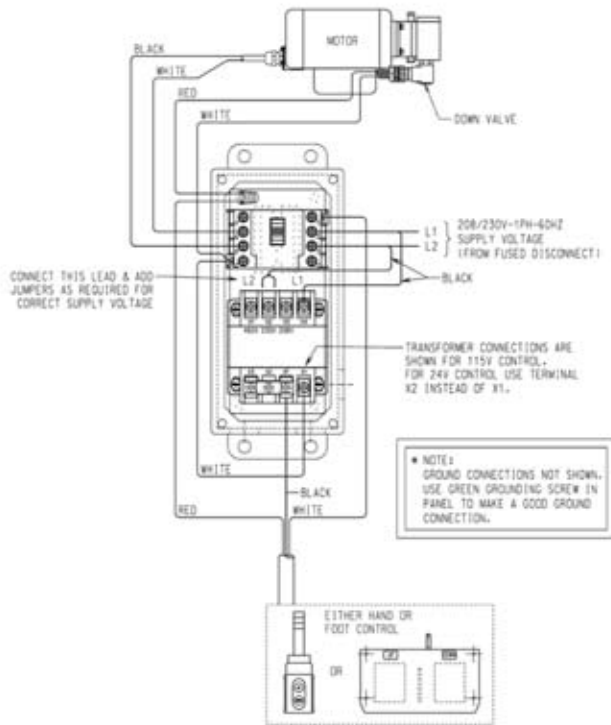
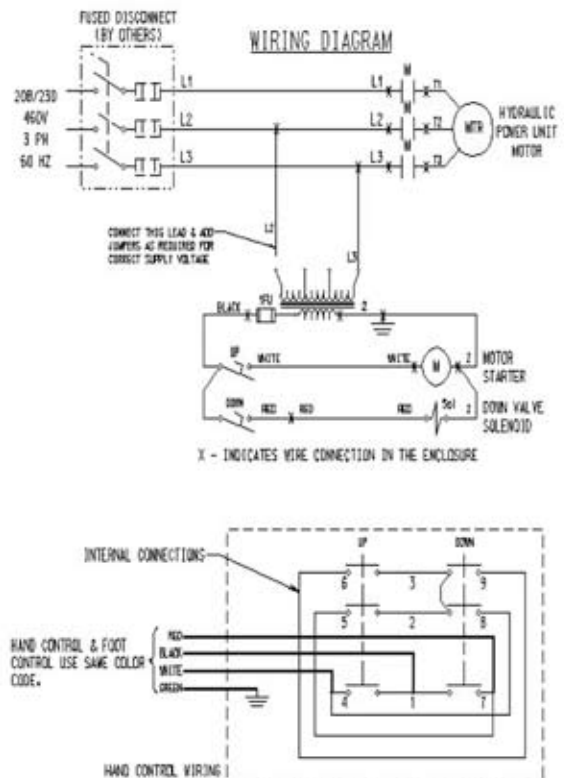
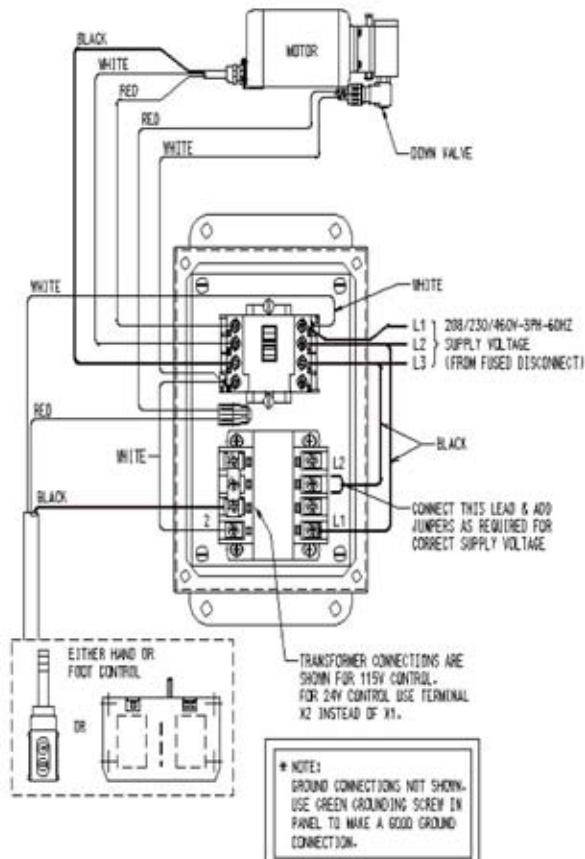


FIGURE 6 WIRING SCHEMATIC 208, 220, 460/3/60 POWER with PIG TAIL



1036-250M Mobile Elevating Large Animal Necropsy Table

Parts listing

RECOMMENDED SPARE PARTS LISTING

DESCRIPTION	PART #	USED ON: MODEL
Foot Switch	E308-E36	All Units
Down Solenoid	2562028	115 VAC Phase Power Lift, Coil Only
	2562029	208, 220, 460, 1 & 3 Phase Power Lift, 24V Coil Only
	2562033	Valve Stem Only
Pump	1000-034-10	1 GPM. All 24" Travel Series. All 36" Travel Series with 2000, 3000 and 4000 Capacities
	1000-034-20	2 GPM. All 36" Travel Series with 5000 and 6000 Capacities. All 48" Travel Series.
Motor	E225R	1HP 1PH. All 24" Travel Series. All 36" Travel Series with 2000, 3000 and 4000 Capacities.
	E255T	1.5 HP 3PH. All 36" Travel Series with 5000 and 6000 Capacities. All 48" Travel Series.
Roller Kit	1000-067	All Units
Hose Hydraulic High Pressure	Contact Presto Parts	XL24 Series, X3W24 Series, X4W24 Series
Hose Hydraulic Low Pressure	80000006VR	All Units
Junction Box	EX 281	All Units (15V only)
Reservoir Fill Plug	N1220	All Units
Cylinder	1000-018 (3-1/2")	All 36" travel lists with 2000, 4000 and 6000 capacity (not XT36-40)
	1000-019 (3-1/2")	XL36-40 Only
	1000-020 (4")	XL24-40 Only
	1000-021 (3-1/2")	All 24" travel lifts with 2000, 4000 and 6000 capacity (not XL24-40)
	1000-023 (3-1/2")	All 48" travel lifts with 2000, 4000 and 6000 capacity
Cylinder Vent Plug	N1215	All Units
Maintenance Chock	1000-234-01VR	XL24 Series, X3W24 Series, X4W24 Series
Flow Control Valve	B211RC-A	All Units
Hydraulic Safety Fuse	1000-086	All Units
Cylinder Seal Kit	1000-059-01	For All 3-1/2" Diameter Cylinders.
	1000-059-02	For All 4" Diameter Cylinders
Pendant	E307	NEMA 1 - 115 Volt AC 25 AMP
Transformer	E306	All Units
Contacto	E305-115	All equipment with 115 Volt
Reservoir	1000-196-01VR	All 36" Travel Units
	1000-196-02VR	All 48" Travel Units
	1022-025VR	All 24" Travel Units
Reservoir Filter	1000-046	All Units

All part orders must be received via fax or USPS.

The model number and serial number must be provided to ensure proper installation and operation.

Maintenance

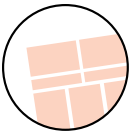
Routine Periodic Maintenance

Every 90 days -

- Apply grease or heavy oil to the pivot shafts.
- Check for loose hardware and signs of excessive wear or binding.
- Check to be sure that the unit is placed on a firm level surface.

If the optional adjustable feet are installed, be sure that all four feet are touching the floor
and are locked in position.





Presto Lifts Limited Warranty Policy

Presto Lifts warrants all of its products against defects in the welded structural frame and, if applicable, scissor legs from faulty material and workmanship for a period of five (5) years from the date of invoice.

A lifetime limited warranty is provided for the Airstroke Actuator™ in all pneumatic lifts against any defect due to faulty material or workmanship.

All batteries are covered under a separate limited warranty from the battery manufacturer for a period of one year from the date of invoice.

All other components have a limited warranty against defects in faulty material and workmanship for a two (2) year period from the date of invoice and 30 day limited warranty on labor. Please note that prior authorization from Presto Lifts is required on all warranty work.

There are no implied warranties of any kind, more specifically, there are no warranties of merchantability or fitness for any particular purpose. Presto Lifts' sole warranty shall be as set forth in this limited warranty.

Presto Lifts will elect to repair or replace a defective component without charge, if any components should become defective within the limited warranty period. Proof of purchase is required for warranty. The charge for shipping the defective component is the responsibility of the buyer and must be accompanied with an RMA number. The shipping charge to return the component to the buyer is the responsibility of Presto Lifts, Inc.

This limited warranty does not cover labor expense for removal or reinstallation of components after thirty days. This limited warranty shall not cover, among other things: damages resulting from foreign matter or water, failure to provide reasonable and necessary maintenance, and if applicable,

use of product while charger is plugged into an AC outlet, or failure to follow operating instructions. The limited warranty is not valid for damage resulting from negligence, accident, unreasonable use, abuse or misuse, exceeding data plate capacities or altering the product without Presto Lifts authorization.

Presto Lifts expressly disclaims and excludes any liability for consequential, incidental, indirect or punitive damages or financial loss to people or property resulting from any breach of warranty or the operation or failure of this product.

Presto Lifts makes no representation that this product complies with local, state, or federal safety/ product standards codes. Should this product fail to comply in any way with those codes, it shall not be considered a defect of materials or workmanship. Presto Lifts shall not be held liable for any damages resulting from noncompliance. It is the dealer's responsibility to exercise this limited warranty. This limited warranty is provided to the original purchaser (defined as the original end user) and is nontransferable. This constitutes the complete and final agreement involving Presto Lifts and limited warranty obligations for products.

1036-250M Mobile Elevating Large Animal Necropsy Table

Maintenance

MAINTENANCE INSTRUCTIONS MAINTENANCE SCHEDULE

The unit requires regular maintenance and follow the manufactures directions.

DISINFECTING AND CLEANING

Clean all surfaces of the stainless steel with a hard surface disinfectant/cleaner such as Sheila Shine® or SaniZene®. Follow instructions on container.

DISINFECTING AND CLEANING COMPONENTS AND ACCESSORIES

Hand wash with disinfecting soap and warm water. Rinse well with clear water and dry with a towel. (Clean on a regular basis to prolong work life).

WARNING

Improper maintenance can cause injury. Maintain only as prescribed in this manual.

Overall, it is very simple to maintain. If you use for its intended purpose, it will provide many years of reliable service.

CARE OF STAINLESS STEEL

Stainless steel products have a directional #4 brushed finish. This finish is produced using a very fine abrasive cloth. Dragging heavy equipment across the stainless steel surfaces will cause noticeable scratching. Pitting/corrosion can occur when carbon steel products are allowed to remain in contact with the stainless steel in the presence of moisture. (Examples- Steel Wool pads left in the bottom of the sink). Stainless steel can be damaged by exposure to acids.

TYPES OF SURFACE CONTAMINANTS

Dirt - Consist of accumulated dust and a variety of contaminates. Warm water with or without a gentle detergent is sufficient. Next in order are mild non-abrasive powders such as typical household cleaners. These can be used with warm water, bristle brushes, sponges, or cleaning cloths. (Do not use carbon steel brushes or steel wool they may leave particles embedded on the surface which can lead to RUSTING.) For more aggressive cleaning, a small amount of vinegar can be added to the scouring powder. When water contains mineral solids, which leave water spots, it is advisable to wipe the surface completely with dry towels.

Fingerprints and Stains - Fingerprints and mild stains resulting from normal use are the most common surface contaminates. This affect the appearance and seldom have an effect on corrosion resistance. They can be removed with a glass cleaner or by gentle rubbing with a paste of soda ash (sodium carbonate) and water applied with a soft rag. Followed by a thorough warm water rinse and towel dry.

Shop Oil and Grease - These soils may be corrosive and may not allow the surface to maintain passivity, and so removal is a necessity. Soap or detergent and water may be used or a combination of detergent and water plus a solvent.

TYPES OF CLEANERS AND METHODS

General Precautions

Avoid using abrasive cleaners unless absolutely necessary. A "soft abrasive," such as pumice, should be used. Many cleaners contain corrosive ingredients, rinse with clean water.

Clean Water and Wipe - A soft cloth and clean warm water should always be the first choice for mild stains, loose dirt and soils. A final rinse with clean water and a dry wipe will eliminate the possibility of water stains.

Solvent Cleaning - Organic solvents can be used to remove fresh fingerprints, oils and greases that have not had time to oxidize or decompose. The preferred solvent is one that does not contain chlorine, such as acetone, methyl alcohol, and mineral spirits.

EFFECTIVE CLEANING METHODS

Commercial Cleaners - Many commercial cleaners compounded from phosphates, synthetic detergents, and alkalis are available for the cleaning of severely soiled or stained stainless surfaces. When used with a variety of cleaning methods, these cleaners can safely provide effective cleaning.

SCRATCH REPAIR

Surface scratches can be repaired using the following technique. Depending on the severity of the scratch, it may be possible to completely remove it. Sand the scratch using 120 grit emery cloth or paper and firm pressure. Always sand in the direction of the grain. Avoid the natural tendency to sand in an arc, instead sand in a perfectly straight line. Sand until the scratch is gone.

Polish using 3M Scotch Brite pads - Very Fine Grade. Use the same motions as with sanding. Polish until the original finish is restored. Wash and wipe the surface completely with dry towels.

RUST REMOVAL

Rust can be repaired using the following technique. Sand the scratch using 120 grit emery cloth or paper and firm pressure. Always sand in the direction of the grain. Avoid the natural tendency to sand in an arc, instead sand in a perfectly straight line. Sand until the rust is gone.

Polish using 3M Scotch Brite pads - Very Fine Grade. Use the same motions as with sanding. Polish until the original finish is restored. Wash and wipe the surface completely with dry towels.



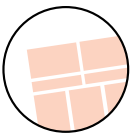


JULY 2010 MFG|ISO DOC. #OM1036-250M (REV B)

1036-250M Mobile Elevating Large Animal Necropsy Table

Training record

[illegible]



Warranty

1036-250M Mobile Elevating Large Animal Necropsy Table

WARRANTY

Mortech Mfg. Inc. warrants all fabrications to be free of defects due to its own workmanship and materials.

Repair and/or replacement of materials furnished that may develop such defects, will be warranted for a period of one year from the date of shipment.

Items not manufactured by Mortech Mfg. Inc. will receive the manufacturer's warranty.

PARTS AND SERVICE

Customer relations and product support are important aspects of Mortech Mfg. Inc.

For assistance with this or any of our fine products please contact us below:

Mortech Mfg. Inc.
411 North Aerojet Avenue
Azusa, CA 91702
TEL (626) 334-1471
FAX (626) 334-1704
www.mortechmfg.com
info@mortechmfg.com

© COPYRIGHT MORTECH MFG. INC., ALL RIGHTS RESERVED.

IMPORTANT

BEFORE INSTALLATION AND OPERATION OF THE UNIT, CHECK ANY ENCLOSURE PANELS AND PLUMBING FIXTURES THAT MIGHT HAVE LOOSENED DURING SHIPPING.

ATTENTION

All images and Drawing in this manual may not represent your model. Refer to your particular project for exact specifications

DISCLAIMER

This manual contains general instructions for the use, operation, and care of this product. The instructions are not all inclusive. Safe and proper use of this product is solely at the discretion of the user. Safety information is included as a service to the user. All other safety measures taken by the user should be within and under consideration of applicable regulations. It is recommended that training on the proper use of this product be provided before using this product in and actual situation.

Retain this manual for future reference. Include it with the product in the event of transfer to new users. Additional free copies are available upon request from Customer Relations.

Mortech Mfg. Inc. has made every effort to ensure that this Manual is accurate; Mortech Mfg. Inc. abdicate liability for any inaccuracies or omissions that may have occurred.

Information in this Manual is subject to change without notice and does not represent a commitment on the part of Mortech Mfg. Inc. Mortech Mfg. Inc. assumes no responsibility for any inaccuracies that may be contained in this Manual. Mortech Mfg. Inc. makes no commitment to update or keep current the information in this Manual, and reserves the right to make improvements to this Manual and/or to the products described in this Manual, at any time without notice.

If you find information in this manual that is incorrect, misleading, or incomplete, we would appreciate your comments and suggestions.

PROPRIETARY NOTICE

The information in this manual is the property of Mortech Mfg. Inc. Mortech Mfg. Inc. reserves all patent rights, proprietary design rights, manufacturing rights, reproductions rights, and sales use rights thereto, and to any article disclosed therein except to the extent those rights are expressly granted to others or where not applicable to vendor proprietary parts.

