



MODEL 1036-251
MOBILE NECROPSY
TABLE TILT and LIFT

CAUTION

• Inspect unit and all components for any loosening that may have occurred during shipping •

CAUTION

• **DO NOT USE CLEANERS CONTAINING CHLORINE WHEN CLEANING STAINLESS STEEL.**

ATTENTION

Review entire manual before starting assembly

WARNING

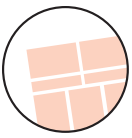
Biohazard Label is place on the equipment signifying the potentially infectiousness due to the samples or reagents



ATTENTION

All images and Drawing in this manual may not represent your model. Refer to your particular project for exact specifications





It is important that the information provided in this manual is observed. These instructions should be read carefully and observed fully before installation and initial operation.

WARNING

It is crucial that any work performed on Mortech Manufacturing Inc. manufactured items are carried out exclusively by skilled professionals who have the respective training. Improper use, maintenance, parts and service, or modification to the equipment may cause injury and/or damage. Use and maintain the equipment only for the purpose described in this manual. Use only Mortech Manufacturing Inc. prescribed approved parts and service. Use the equipment only as designed by Mortech Manufacturing Inc.

BLOODBORNE DISEASE NOTICE

To reduce the risk of exposure to bloodborne diseases such as HIV-1 and hepatitis when using the equipment, follow the disinfecting and cleaning instructions in this manual.

RECOMMENDED OPERATING SKILLS AND TRAINING

- SKILLS

Operators using the equipment need:

- A working knowledge of necessary procedures.
- The ability to carry out necessary service procedures.
- A complete understanding of the procedures described in this manual.

- TRAINING

- Read the this manual as prescribed
- Be trained on the use of the equipment.
- Practice with the equipment before using it in regular service.
- Be tested on their understanding of the equipment operation.
- Record their training.

BEFORE USING THE EQUIPMENT

Personnel working with this equipment needs to read this manual. Assemble of the unit following set instructions, and perform any pre-service checks to confirm the units operates properly.

INSPECTING THE UNIT BEFORE USE

Please take time to inspect all shipment prior to signing delivery ticket. If concealed damage is discovered, save the carton and immediately contact carrier agent to initiate claim of damage.

! BE SURE TO CHECK

- Are all components present?
- Do the moving parts operate smoothly?
- Is unit draining properly?
- Are all nuts, bolts, and pins secured in place?
If unit has an issue contact Mortech Manufacturing Inc.

INSTRUCTION FOR HANDLING

Adhere to state and/or local certification and regulations for operation of forklift and/or pallet jack. Cargo is extremely heavy, be sure to have the necessary manpower as well as equipment to successfully unload shipment from transport. We recommend a forklift and/or pallet jack with the capacity to lift up to 2000 lbs. to remove cargo from transport.

The forklift can be used to unload receiving products safely by placing the load on the floor, maneuvering the forklift into position, tilting the mast forward to vertical position so the load will be level, lowering the load, and smoothly backing away without dragging. Once cargo is unloaded, positioning equipment for installation will once again require a forklift. Read all manual and note on installation of the unit before attempting installing.

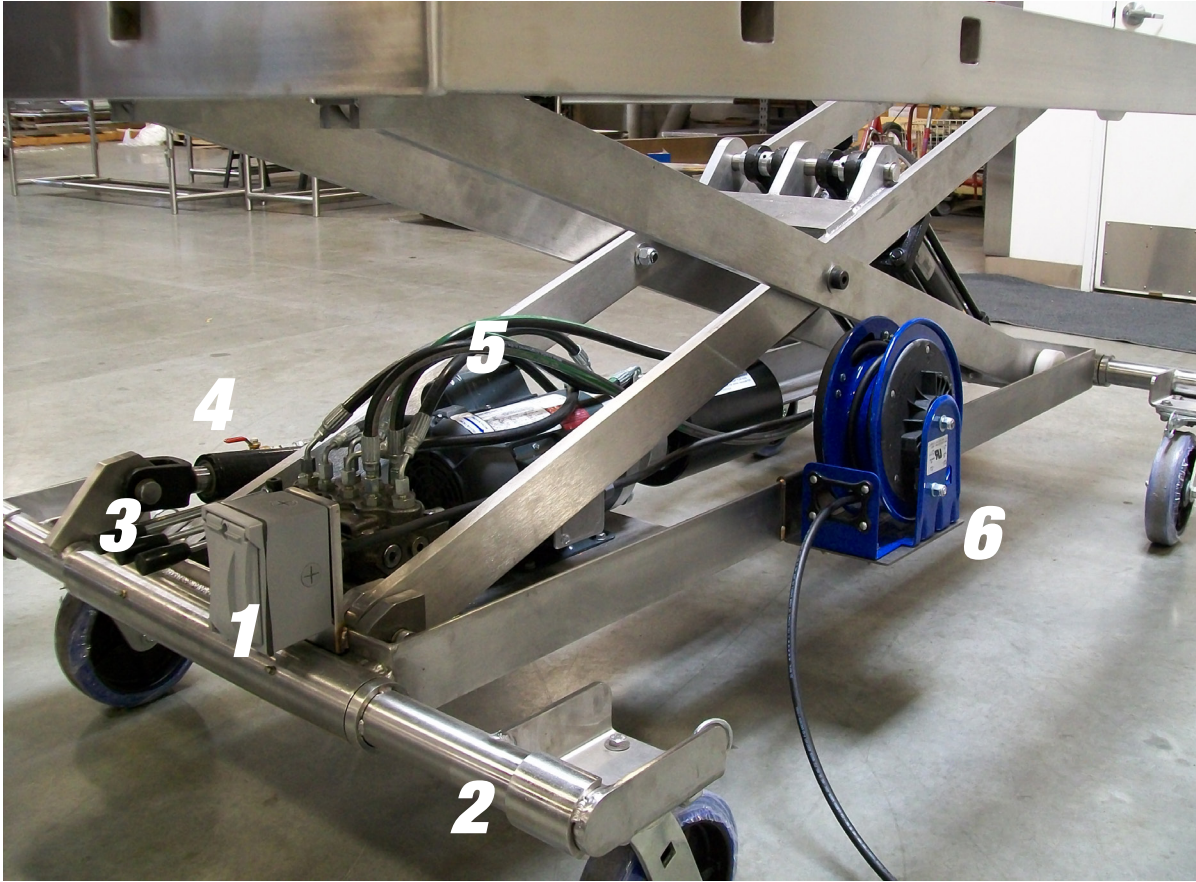
The pallet jack can be used (with a loading dock and maneuverability on and off the transport vehicle) to unload receiving products safely. Maneuvering the pallet jack into position (in the appropriate position within the pallet), lifting the pallet then driving the pallet jack off the transport and safely into the place of installation.

Range of Environmental Condition

Mortech Manufacturing, Inc. equipment shall be placed in a controlled environment (housing or housed unit) hindering the weathering effects on the installed units. The equipment will have minimal corrosive and eroding factors that can break down the stability and operation of Mortech Manufacturing Inc. equipment. The impact on the equipment by the operator utilizing water or corrosives in the medical procedures can be controlled and responsibility for the cleaning and maintenance placed upon that person. The effects of anthropogenic (man-made) gasses on the environment, such as carbon dioxide (CO₂) that will be omitted from the unit should be minimal.

Due to continuous innovation and product development this installation guide is subject to change without notice.

Please save these instructions for later use.



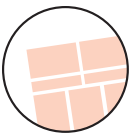
The 1036-250 MOD Mobile Necropsy Table is designed to assist the user in performing medical procedures. It has an adjustable elevation, and tilt feature to accommodate the preference of it's users. The controls are simple and easy to use. Three handles at the rear of the unit operate all functions: rotating the casters, performing the tilt feature, and elevating table top to desired height.

1. ON / OFF SWITCH
2. CASTER WHEEL ASSEMBLY
3. 3 PORT MANIFOLD
4. HYDRAULIC CYLINDERS
5. MAIN MOTOR
6. RETRACTABLE POWER CORD

TO OPERATE:

1. PLUG IN RETRACTABLE POWER CORD
2. TURN ON POWER.
3. OPEN (SHUT OFF) VALVE WHEN OPERATING CASTER TILT FEATURE (see p.4)
4. USE LEVERS TO OPERATE FEATURES





MIN HEIGHT
17" APPROX

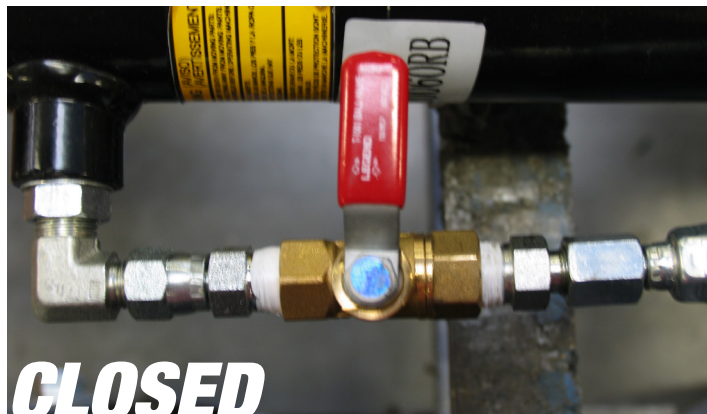


MAX HEIGHT
56" APPROX.



MAX TILT
6" APPROX.

CASTERS TILT AT WITH THE APPROXIMATE
DISTANCE OF 6" FOR EITHER SIDE, INVERSELY
RAISING THE OPPOSITE SIDE WITH SAME



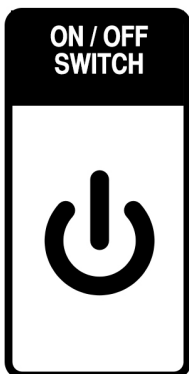
CLOSE VALVES WHEN NOT OPERATING TILT FEATURE.

VALVES SHOULD REMAIN OPEN TO PERFORM TILT FEATURE

DO NOT ATTEMPT TO OPERATE THE TILT FEATURE WITH VALVES IN THE CLOSED POSITION DAMAGE TO COMPONENTS COULD OCCUR

STATEMENTS REMAIN TRUE FOR BOTH HYDRAULIC CYLINDERS, ON EITHER SIDE. VALVES MAY APPEAR OPPOSITE TO ABOVE PIC.

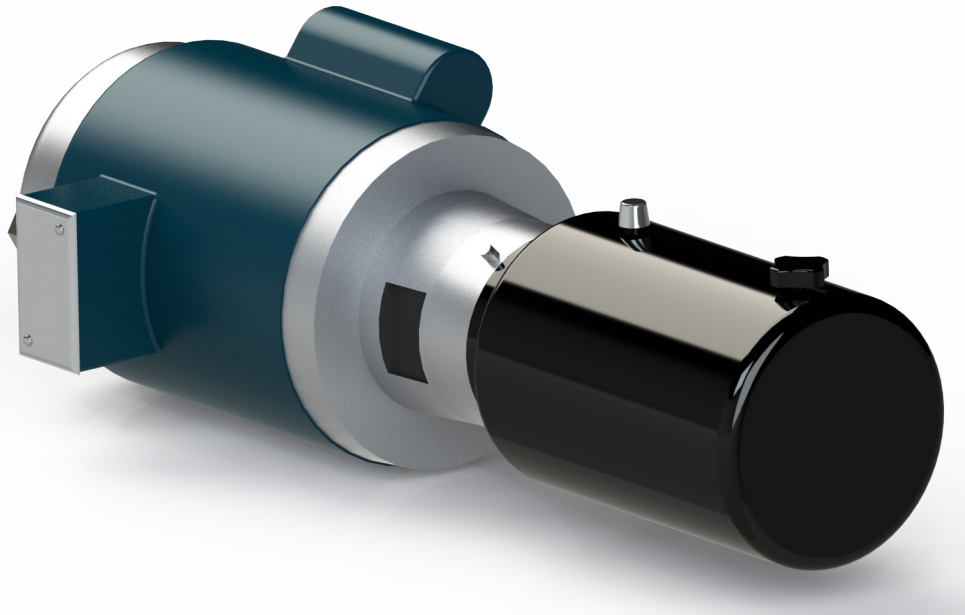
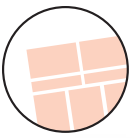
VALVES ARE TO BE CLOSED AFTER OPERATING TILT FEATURE.



SHUT OFF VALVES MUST BE IN THE OPEN POSITION IN ORDER TO TILT CASTERS.

TURN ON THE POWER SWITCH, THEN OPERATE CONTROLS WHEN READY





Monarch Supplied 56C Motors have the standard length NEMA shaft shortened by 1-3/16". All other frame size motors and all special ordered units are supplied with NEMA standard length drive shafts when possible. The above motors may be specified with standard NEMA 56C length drive shafts.

Special Motors commonly available for use with M-4300 units include:

- Explosion Proof
- Dual Frequency (50/60 Hz)
- Intermittent Duty - Custom Designed
- Washdown Duty
- 575V AC
- Open Drip Proof
- Totally Enclosed Non-Ventilated
- Custom Designed Motors for Special Applications

Recommended Operating Conditions for M-400 Series Pumps:

Oil Temperature Range: 10°F to 170°F (-25°C to 77°C)

Operating Temperature: 50°F to 130°F (10°C to 54°C)

Oil Viscosity:

- Optimum 100 to 350 SUS (Cst = .22 x SUS - 135/SUS)
- Minimum 100 SUS at Operating
- Maximum Start Up 4000 SUS

Recommended Filtration:

- 10 micron nominal or better

Recommended Fluid for indoor use:

- Mobil DTE 24 or equal

Recommended Fluid for outdoor use:

- Mobil DTE 13 or equal

Recommended Fluid for outdoor use:

- ATF Dexron II or equal

Contact factory for use with non-petroleum based fluids and availability of special seals.

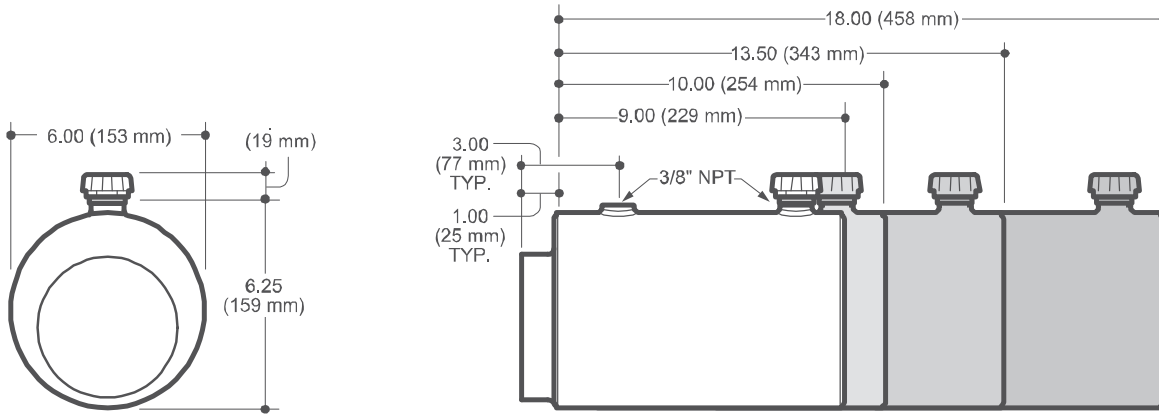
STANDARD PUMP FEATURES:

- Fixed Displacement, External Tooth, Powdered Metal Gears
- Hardcoat Processed Internal Pump Surfaces Extend Service Life
- Extremely Tolerant of Fluid Contaminants and Resistant to Galling Caused by Low Viscosity Start-up
- Wide Temperature and Viscosity Operation
- Cost Effective
- 100% Tested for Volumetric Efficiency and Pressure
- Over Five Million Power Units Sold

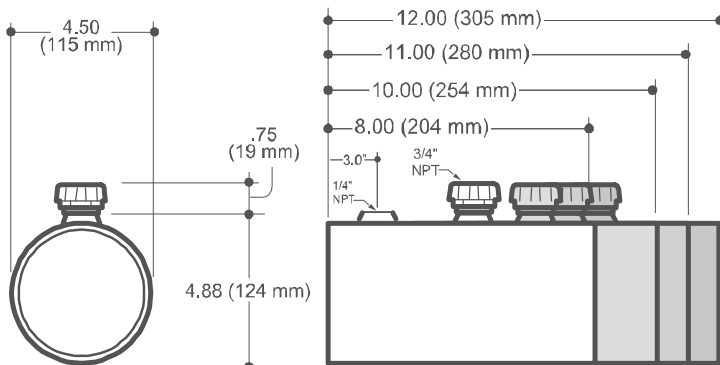
6 M Series Reservoirs

6.1 M-Series Reservoirs Steel

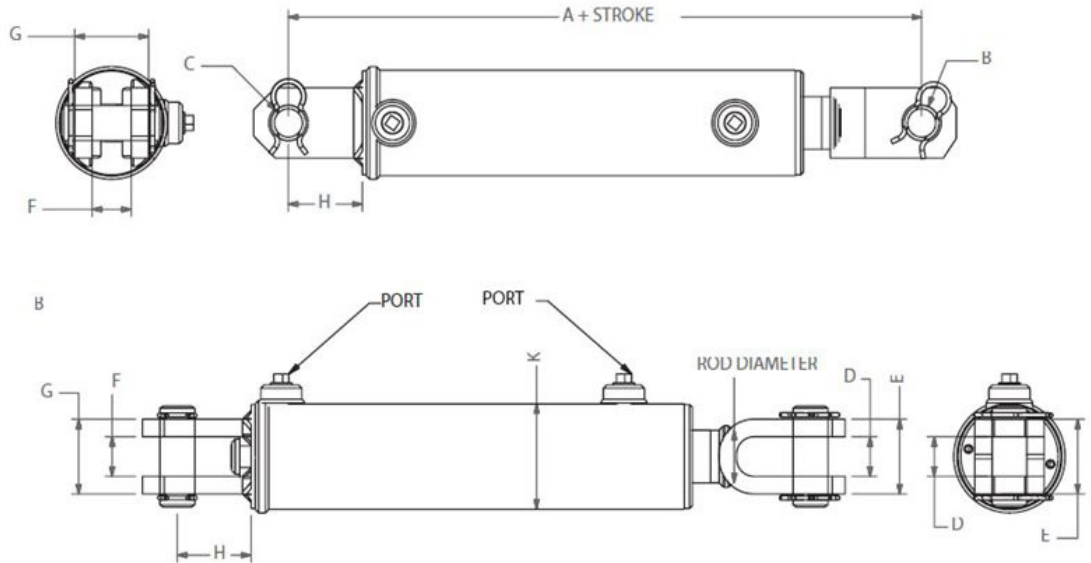
Part Number	Length in / (mm)	Useable Capacity			
		Horizontal		Vertical	
		Cubic inch (in ³)	Liter (L)	Cubic inch (in ³)	Liter (L)
06042	9.00 (229 mm)	190	3.10	168	2.75
06043	10.00 (254 mm)	217	3.56	194	3.20
06044	13.50 (343 mm)	292	4.80	285	4.70
06045	18.00 (458 mm)	394	6.45	405	6.65



Part Number	Length in / (mm)	Useable Capacity	
		Cubic inch (in ³)	Liter (L)
06661	8.00 (204 mm)	60	1.00
06663	10.00 (254 mm)	85	1.40
06664	11.00 (280 mm)	98	1.60
06665	12.00 (305 mm)	111	1.80



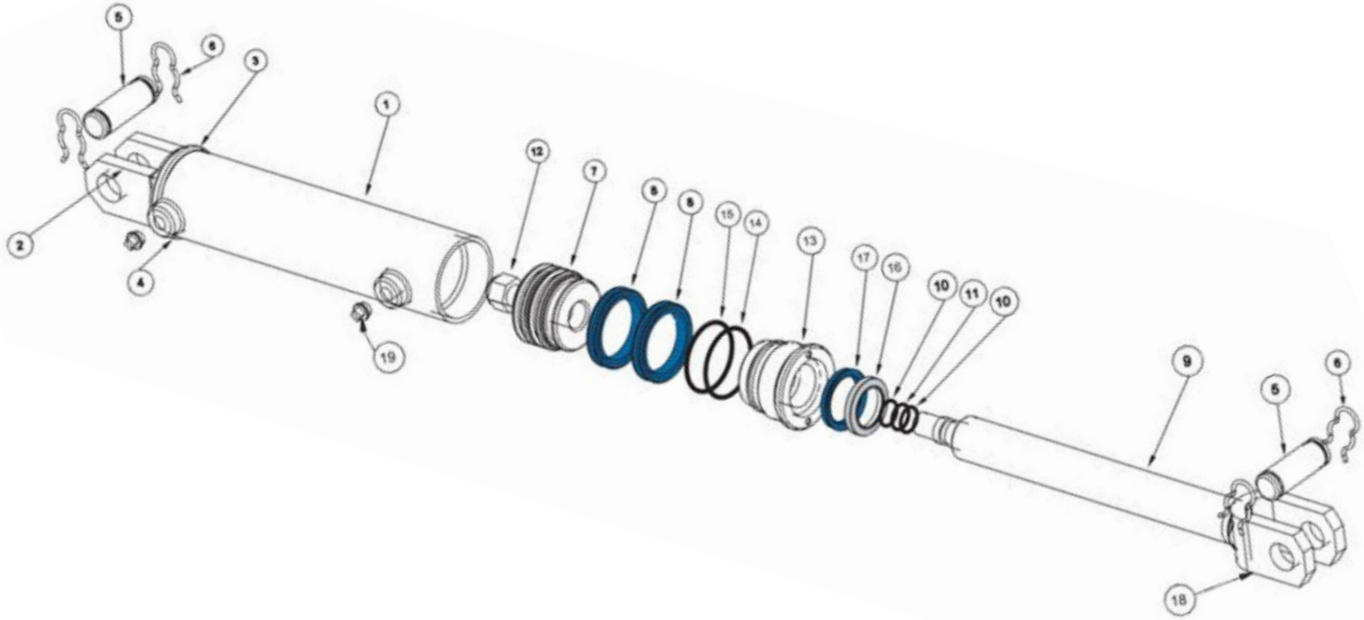
HCL-2006



Specifications

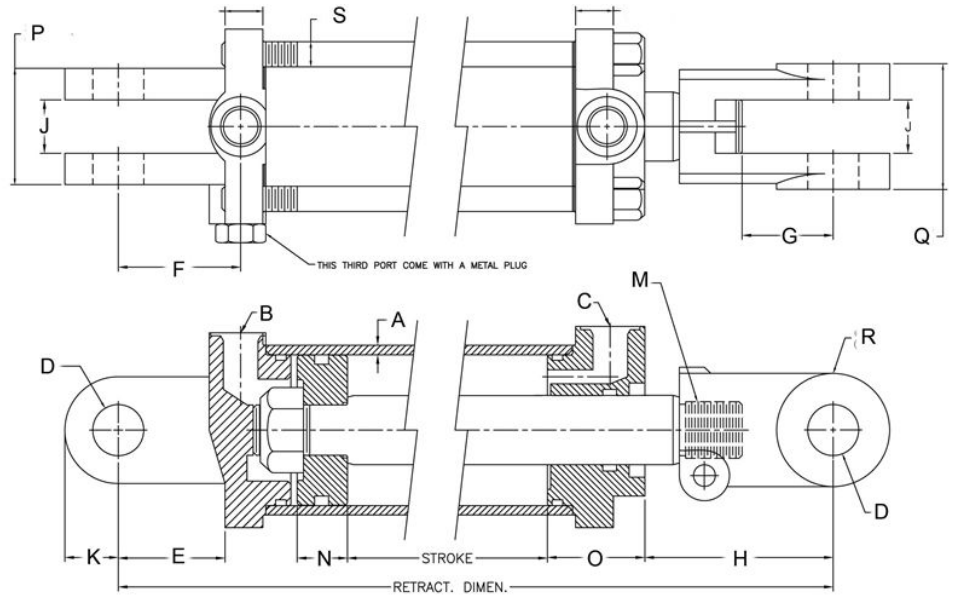
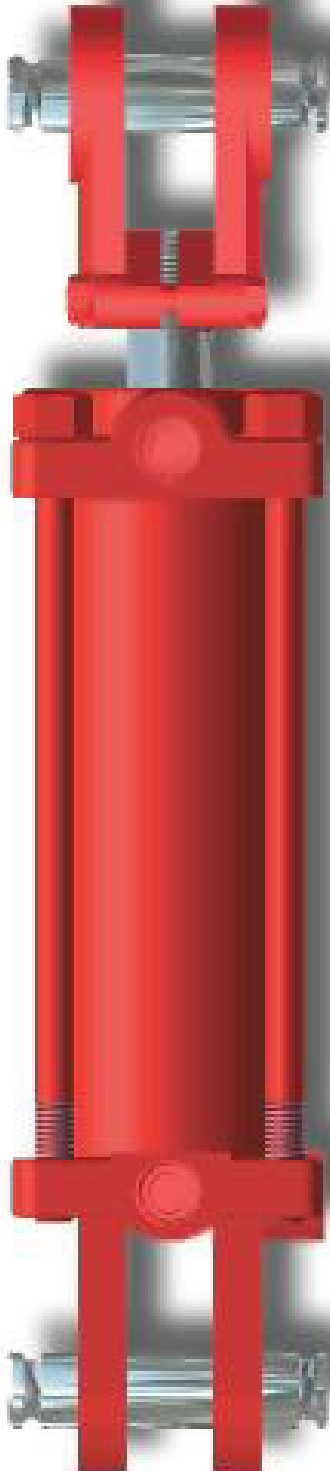
Bore Size	2 in
Working Pressure	3000 psi
Stroke	6 in
Shaft Diameter	1 1/4 in
Retracted Length	16 1/4 in
Extended Length	22 1/4 in
Ports¹	3/8 NPT
Pin Diameter	1 in
Weight	15 lb
Dimension A	10.250 in
Diameter B	1.015 in
Diameter C	1.015 in
Dimension D	1.125 in





Dimension E	2.125 in
Dimension F	1.125 in
Dimension G	2.125 in
Dimension H	2.125 in
Dimension I	2.125 in
Dimension K	2.500 in
Rod Dia.	1.250 in
Material Specification	<ol style="list-style-type: none"> 1. TUBE - Honed Steel, Precision Finished Steel C1026 (1) 2. BASE END CLEVIS - High Tensile Steel (1) 3. BASE PLATE - Steel (1) 4. PORTS - NPT Ports (standard) Steel (2) 5. PINS - High Tensile Zinc-Plated Steel (2) 6. PIN CLIPS - High Tensile Zinc-Plated Steel (4) 7. PISTON - Ductile Iron 60-40-10 (1) 8. PISTON SEALS - Urethane U-Cups (2) 9. ROD - Induction Hardened Chrome High Tensile Strength Steel Alloy SAE C1045 (1) 10. ROD SEAL - Back-Up Ring (2) 11. ROD SEAL - O-Ring (1) 12. ROD NUT - Lock Nut, Grade 8, High Tensile Zinc-Plated Steel (1) 13. GLAND - Ductile Iron 60-40-10 (1) 14. GLAND SEAL - Back-Up Ring (1) 15. GLAND SEAL - O-Ring (1) 16. WIPER - Metal Canned Wiper (1) 17. ROD SEAL - Urethane U-Cup Twin Lips (1) 18. ROD CLEVIS - High Tensile Steel (1) 19. PLUGS - Plastic Included (2)

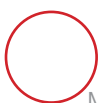
HTH 3510

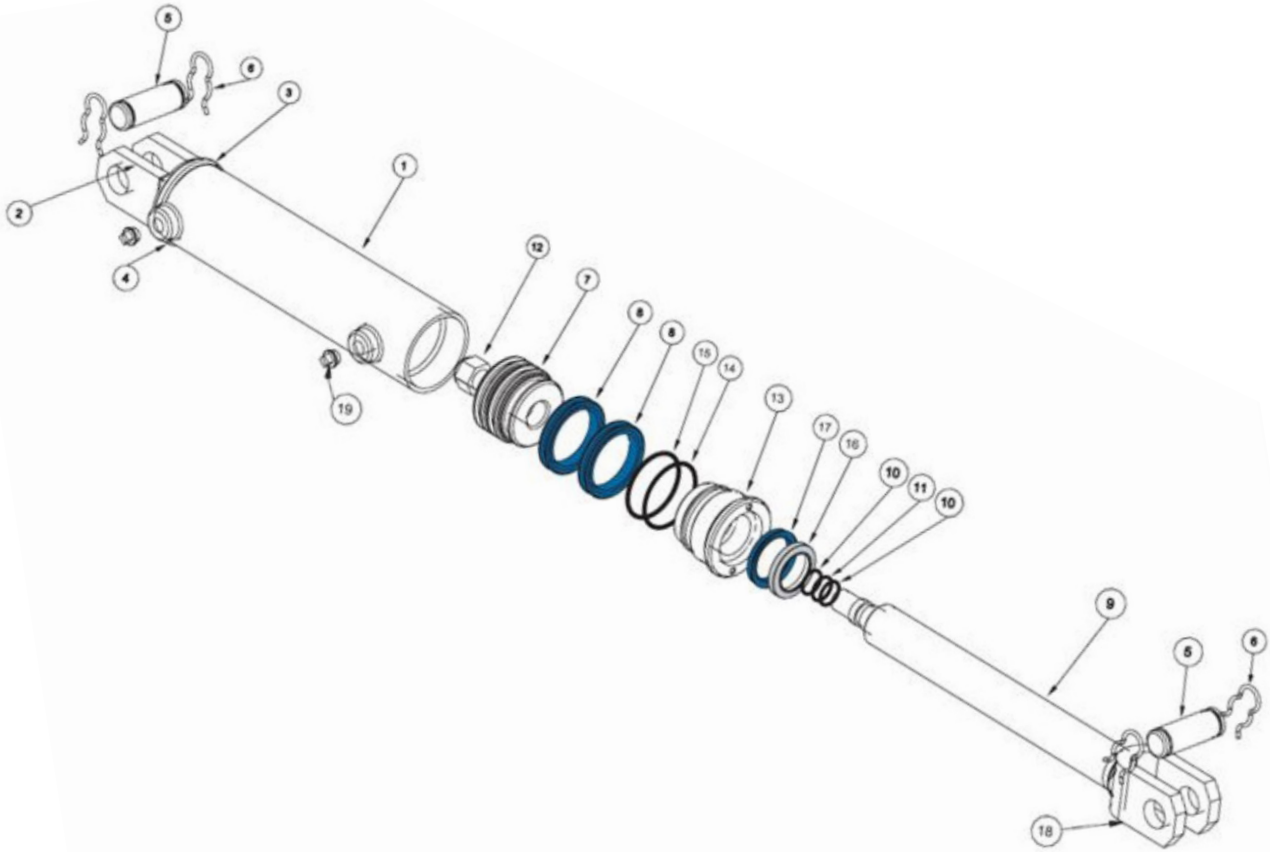


Specifications

Bore Size	3.5 in
Working Pressure	3000 psi
Stroke	10 in
Shaft Diameter	1.375 in
Retracted Length	20.250 in
Extended Length	30.250 in
Ports	SAE 8
Pin Diameter	1 in
Weight	37 lb
Dimension A	0.188 in
Rod Dia.	1.375 in
Diameter D	1.015 in
Dimension E	2.125 in
Dimension F	2.438 in

Dimension G	1.813 in
Dimension H	3.750 in
Dimension H (08-A)	5.750 in
Dimension H (16-A)	9.000 in
Dimension J	1.063 in
Dimension K	1.250 in
Dimension M	1.313-12 UNF
Dimension N	1.000 in
Dimension O	2.000 in
Dimension P	2.688 in
Dimension Q	2.875 in
Diameter R	2.550 in
Dimension S	0.500 in

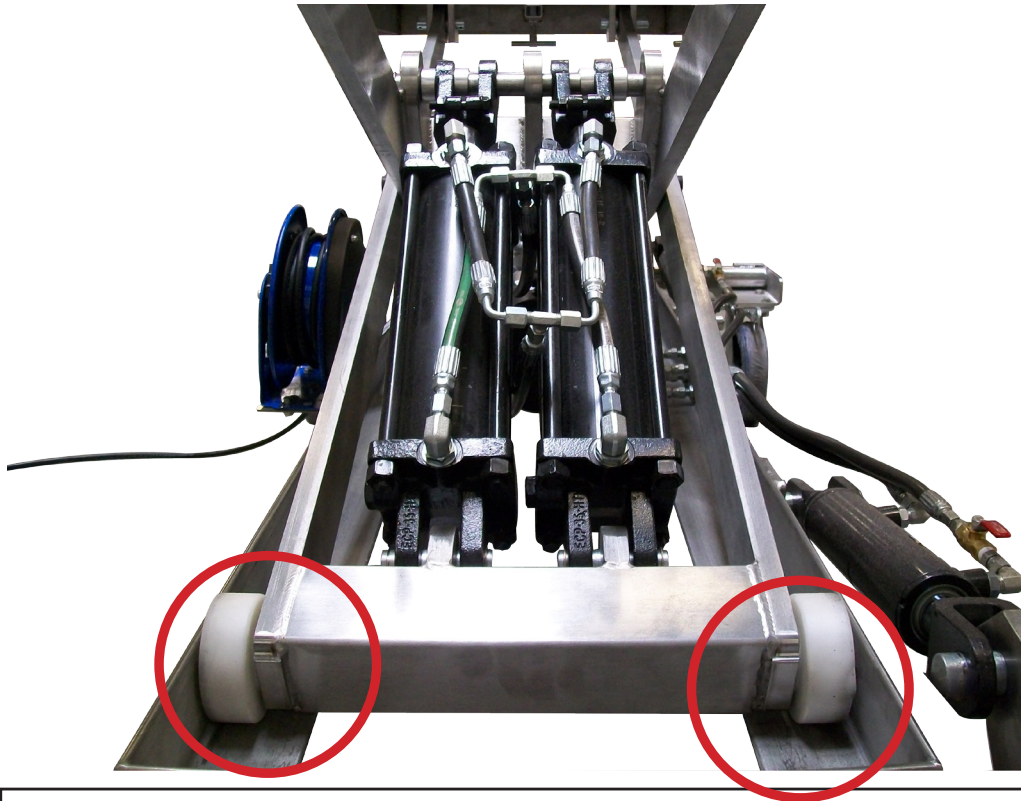
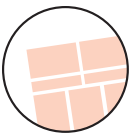




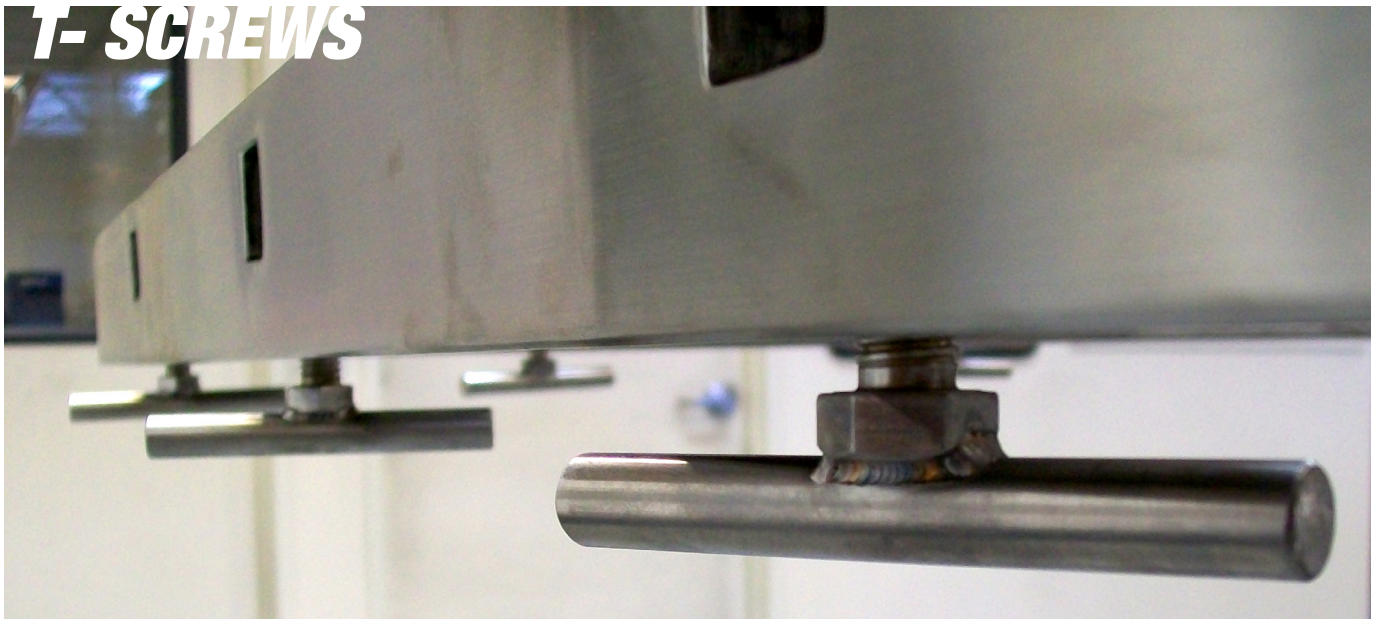
Material Specification

1. CAP - Ductile Iron 60-40-10 (1)
2. TUBE - Honed Steel, Precision Finished Steel C1026 (1)
3. PISTON - Ductile Iron 60-40-10 (1)
4. ROD - Induction Hardened Chrome High Tensile Strength Steel Alloy SAE C1045 (1)
5. GLAND - Ductile Iron 60-40-10 (1)
6. ROD CLEVIS - Ductile Iron 60-40-10 (1)
7. TIE-ROD - C1045 High Tensile Steel (4)
8. PINS - High Tensile Zinc-Plated Steel (2)
9. ROD NUT - Lock Nut, Grade 8, High Tensile Zinc-Plated Steel (1)
10. WELDED TIE-ROD NUTS - Grade 8, High Tensile Steel (4)
11. CLEVIS BOLT - Grade 8, High Tensile Steel (1)
12. CLEVIS NUT - Grade 8, High Tensile Steel (1)
13. PLUGS - Plastic (2)
14. PLUGS - Metal (1)
15. PIN CLIPS - High Tensile Zinc-Plated Steel (4)
16. CAP SEAL & GLAND SEAL - O-Ring (2)
17. CAP SEAL & GLAND SEAL - Back-Up Ring (2)
18. PISTON SEAL - Urethane Seal Rubber Energizer (1)
19. PISTON SEAL - O-Ring (1)
20. ROD SEAL - Urethane U-Cup Twin Lips (1)
21. WIPER - Metal Canned Wiper (1)





**ATTENTION:
PROPER LUBRICATION MONTHLY OR AS NEEDED
WITH WD-40 IS RECOMMENDED. AT THE ROLLER**



**ATTENTION:
PROPER LUBRICATION MONTHLY OR AS NEEDED
SAME APPLIES TO BOTH ENDS OF TABLE**





DANGER: ELECTRICAL CORD REELS CAN BE HAZARDOUS

Misuse Can Result in FIRE or DEATH by ELECTRICAL SHOCK

Please read BOTH SIDES carefully and Follow All Directions. BEFORE USE

- A Cord Reel Marked For Indoor Use is To Be Used Indoors Only.
- Inspect Thoroughly Before Each Use. DO NOT USE IF DAMAGED.
- Look for the NUMBER OF WATTS OR AMPERES On Appliances To Be Plugged Into Cord Reel.
- See Label On Cord Reel for SPECIFIC WATTAGE OR AMPERAGE.
- Do Not Plug More than the SPECIFIED NUMBER OF WATTS OR AMPERES Into This Cord Reel.
- Do not Run Through Doorways, Holes In Ceilings, Walls or Floors.
- Make sure Appliance is OFF Before connecting Cord Reel to Outlet.
- FULLY INSERT Plug Into Outlet.
- Do not remove, Bend or Modify Any Metal Prongs or Pins of Cord Reel.
- Do Not Use Excessive Force to Make Connections.
- Do Not Connect a Three-Prong Plug to a Two-Hole Cord Reel.



THIS IS A POLARIZED CORD REEL

Mortech™ Manufacturing Inc.

411 North Aerojet Avenue, Azusa, CA 91702
(626) 334-1471 www.mortechmfg.com

CAUTION

- When retracting cord, use a controlled speed, DO NOT release cord, damage to equipment can occur

CAUTION

- UNIT CAN NOT BE WASHED DOWN. Reel must be protected during maintenance or cleaning.

DANGER: ELECTRICAL CORD REELS CAN BE HAZARDOUS

Misuse Can Result in FIRE or DEATH by ELECTRICAL SHOCK

Please read BOTH SIDES carefully and Follow All Directions. DURING USE

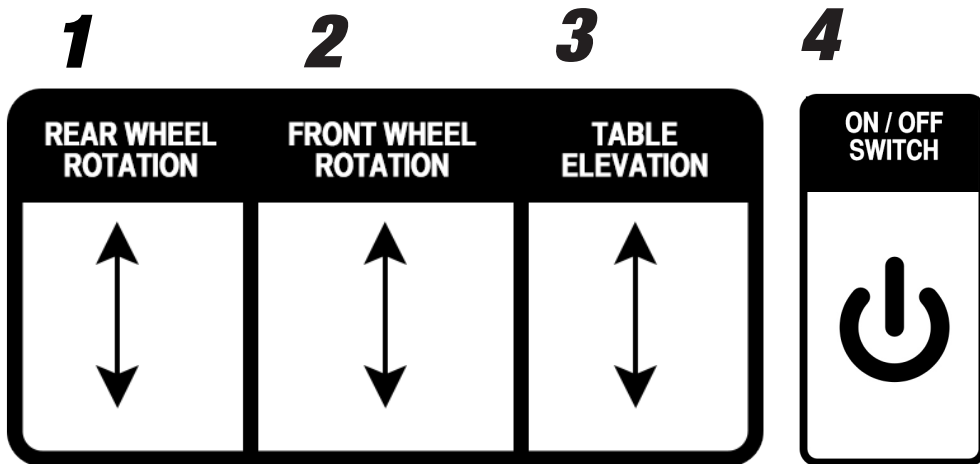
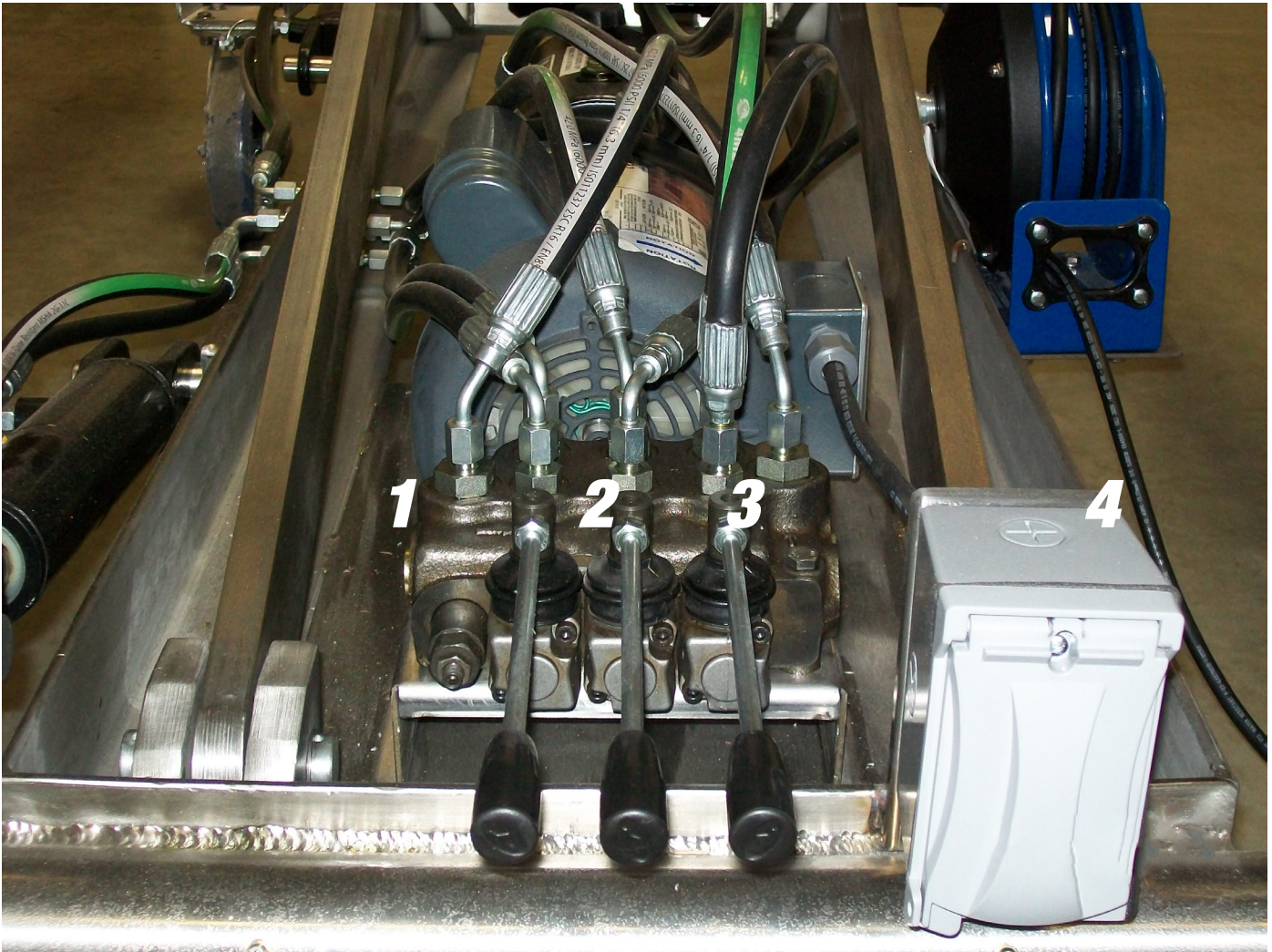
- Keep Away From Water.
- DO NOT USE WHEN WET.
- Keep Children and Pets Away From Cord Reel.
- Do Not Plug One Cord Reel Into Another.
- AVOID OVERHEATING. Do Not Cover It With Any Material.
- Do Not Drive, Drag or Place Objects Over Cord.
- Do Not Walk on Cord.



AFTER USE

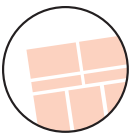
- GRASP PLUG to Remove From Outlet.
- Always Store Cord Reel INDOORS.
- Always Unplug When "Not In Use."
- Do Not Unplug By Pulling On Cord.





SWITCH OFF WHEN TABLE NOT IN USE





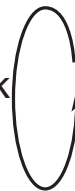
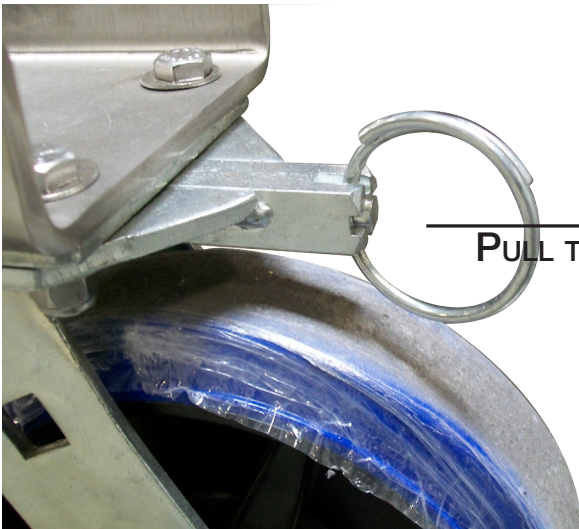
CASTER PART # S182D-PP

MAX 900LBS CAPACITY



**SWIVEL LOCK
MODEL # SL-160000**

CASTERS SWIVEL / LOCK OPERATIONS



TWIST 90° INTO POSITION

WARNING

Be sure caster pivot locks are engaged prior to operating tilt feature.
The risk of equipment damage or personal injury could occur.



CASTERS MUST BE LOCKED IN POSITION IN ORDER TO OPERATE TILT FEATURE SAFELY

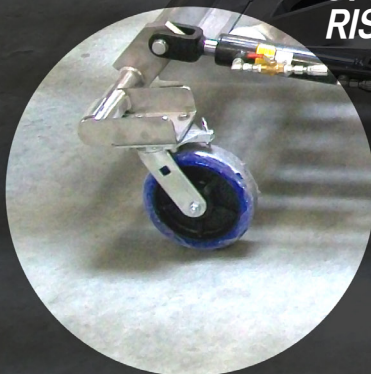
PULL AND TWIST TO RELEASE LOCK (SHOWN ABOVE)

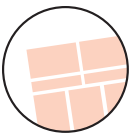


HORIZONTAL POSITION INDICATES FREE 360° WHEEL ROTATION

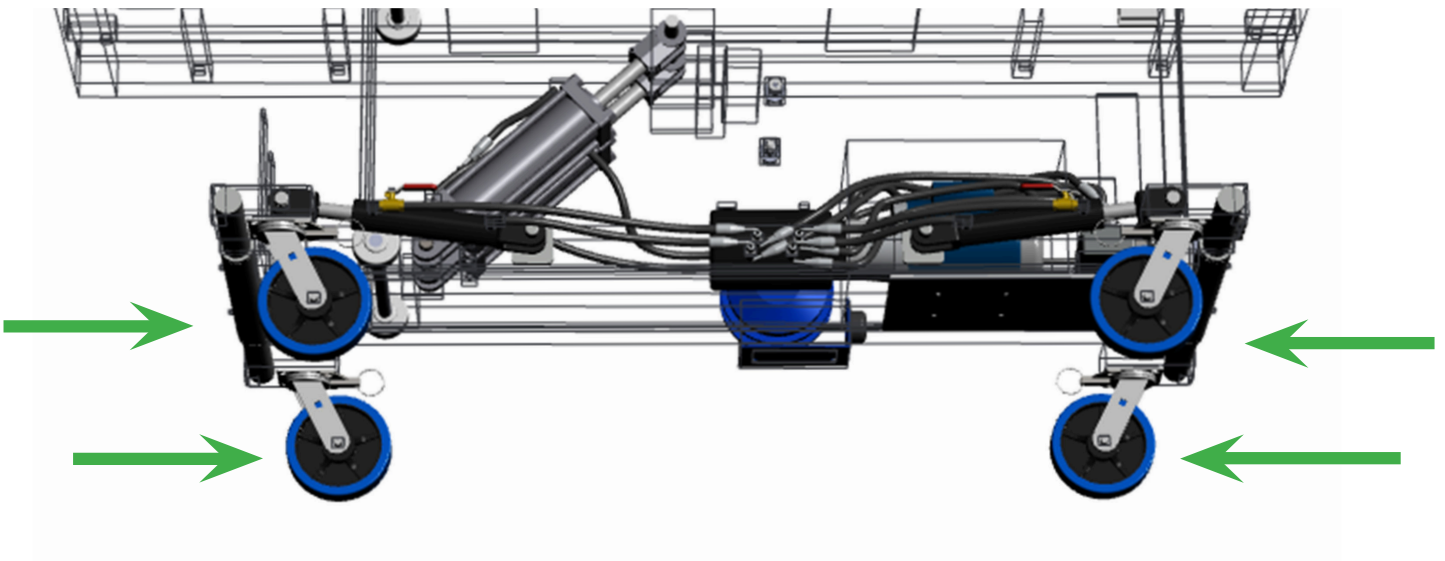
ALL CASTER WHEELS MUST BE ON THE INSIDE OF CASTER BAR, FACING THE INWARD POSITION PRIOR TO THE OPERATING TILT.

BE SURE CASTER PIVOT LOCKS ARE ENGAGED BEFORE OPERATING CASTER TILT FEATURE. RISK OF DAMAGING EQUIPMENT OR PERSONAL INJURY





IMAGES BELOW REFLECT PROPER WHEEL OPERATION



CAUTION
DO NOT OPERATE TILT FEATURE USING ANY OTHER WHEEL POSITION, OTHER THAN WHAT IS DISPLACED

ATTENTION
• CASTERS TILT FEATURE CAN ONLY BE OPERATED IN THIS POSITION.

MAINTENANCE INSTRUCTIONS

The unit requires regular maintenance and follow the manufactures directions.

DISINFECTING AND CLEANING

Clean all surfaces of the stainless steel with a hard surface disinfectant/cleaner such as Sheila Shine® or SaniZene®. Follow instructions on container.

DISINFECTING, CLEANING COMPONENTS & ACCESSORIES

Hand wash with disinfecting soap and warm water. Rinse well with clear water and dry with a towel. (Clean on a regular basis to prolong work life).

WARNING

Improper maintenance can cause injury. Maintain only as prescribed in this manual. Overall, it is very simple to maintain. If you use for its intended purpose, it will provide many years of reliable service.

CARE OF STAINLESS STEEL

Stainless steel products have a directional #4 brushed finish. This finish is produced using a very fine abrasive cloth. Dragging heavy equipment across the stainless steel surfaces will cause noticeable scratching. Pitting/corrosion can occur when carbon steel products are allowed to remain in contact with the stainless steel in the presence of moisture. (Examples- Steel Wool pads left in the bottom of the sink). Stainless steel can be damaged by exposure to acids.

TYPES OF SURFACE CONTAMINANTS

- **Dirt** - Consist of accumulated dust and a variety of contaminates. Warm water with or without a gentle detergent is sufficient. Next in order are mild non-abrasive powders such as typical household cleaners. These can be used with warm water, bristle brushes, sponges, or cleaning cloths. (Do not use carbon steel brushes or steel wool they may leave particles embedded on the surface which can lead to RUSTING.) For more aggressive cleaning, a small amount of vinegar can be added to the scouring powder. When water contains mineral solids, which leave water spots, it is advisable to wipe the surface completely with dry towels.
- **Fingerprints and Stains** - Fingerprints and mild stains resulting from normal use are the most common surface contaminates. This affect the appearance and seldom have an effect on corrosion resistance. They can be removed with a glass cleaner or by gentle rubbing with a paste of soda ash (sodium carbonate) and water applied with a soft rag. Followed by a thorough warm water rinse and towel dry.
- **Shop Oil and Grease** - These soils may be corrosive and may not allow the surface to maintain passivity, and so removal is a necessity. Soap or detergent and water may be used or a combination of detergent and water plus a solvent.

TYPES OF CLEANERS AND METHODS

- **General Precautions**
Avoid using abrasive cleaners unless absolutely necessary. A "soft abrasive," such as pumice, should be used. Many cleaners contain corrosive ingredients, rinse with clean water.
- **Clean Water and Wipe** - A soft cloth and clean warm water should always be the first choice for mild stains, loose dirt and soils. A final rinse with clean water and a dry wipe will eliminate the possibility of water stains.
- **Solvent Cleaning** - Organic solvents can be used to remove fresh fingerprints, oils and greases that have not had time to oxidize or decompose. The preferred solvent is

one that does not contain chlorine, such as acetone, methyl alcohol, and mineral spirits.

EFFECTIVE CLEANING METHODS

Commercial Cleaners - Many commercial cleaners compounded from phosphates, synthetic detergents, and alkalis are available for the cleaning of severely soiled or stained stainless surfaces. When used with a variety of cleaning methods, these cleaners can safely provide effective cleaning.

SCRATCH REPAIR

Surface scratches can be repaired using the following technique. Depending on the severity of the scratch, it may be possible to completely remove it. Sand the scratch using 120 grit emery cloth or paper and firm pressure. Always sand in the direction of the grain. Avoid the natural tendency to sand in an arc, instead sand in a perfectly straight line. Sand until the scratch is gone. Polish using 3M Scotch Brite pads - Very Fine Grade. Use the same motions as with sanding. Polish until the original finish is restored. Wash and wipe the surface completely with dry towels.

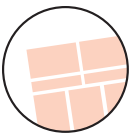
RUST REMOVAL

Rust can be repaired using the following technique. Sand the scratch using 120 grit emery cloth or paper and firm pressure. Always sand in the direction of the grain. Avoid the natural tendency to sand in an arc, instead sand in a perfectly straight line. Sand until the rust is gone. Polish using 3M Scotch Brite pads - Very Fine Grade. Use the same motions as with sanding. Polish until the original finish is restored. Wash and wipe the surface completely with dry towels.

5 Stainless Steel Mistakes NOT to Make When Cleaning

- 1. Do not use abrasive cleaners that will scratch the surface.** Depending on the surface finish of your stainless steel, abrasive cleaners can cause scratching. A dull finish, probably will not show scratching as much as mirror or highly polished finishes. Test the cleaner in a hidden spot. It's also a good idea to work from the least risky type (water) of cleaning to the heavy duty stuff.
- 2. Do not forget to rinse.** Gritty or dirty water can leave a residue on your finish. It can also stain or pit the surface of your stainless steel. Rinse completely. Residue from cleaning solutions left on a stainless steel surface can stain or damage finish.
- 3. DO NOT USE CLEANERS CONTAINING CHLORINE.** While it may be second nature to bleach everything, stainless steel and chlorine do not mix. Stay away from the bleach when you clean stainless steel. Be aware that bleach can be included in different types of cleaners. If you accidentally get a cleaner on your stainless steel you'll need to rinse it off and quickly.
- 4. DO NOT USE STEEL WOOL OR STAINLESS BRUSH** These products leave little particles in the surface of the steel and inevitably these particles begin rusting and staining the surface of the steel. They also can excessively scratch the surface of your stainless steel. *Stay completely away from steel wool and steel brushes.*
- 5. Do not assume it's the cleaner.** If you do have some spotting or staining, and you've followed all of the rules, it may not be the stainless steel cleaner. Water, especially hard water, can leave spotting and staining on stainless steel surfaces. Towel dry after rinsing can end the problem. Sometimes, even water is an enemy to stainless steel.





WARRANTY

Mortech Manufacturing, Inc. warrants all fabrications to be free of defects due to its own workmanship and materials.

CONTINENTAL UNITED STATES:

Repair and/or replacement of parts furnished that may develop such defects, will be warranted for a period of one year parts replacement and 90 days labor from the date of shipment. Items not manufactured by Mortech Manufacturing will receive the manufacturer’s warranty.

INTERNATIONAL:

(For validation of warranty, installation location (physical address) required) Replacement of parts furnished that may develop such defects, will be warranted for a period of (18) months from the date of shipment. Shipping and Labor is not warranted. Items not manufactured by Mortech Manufacturing, Inc. will receive the manufacturer’s warranty.

PARTS AND SERVICE

Customer relations and product support are important aspects of Mortech Manufacturing, Inc. For assistance with this or any of our fine products please contact us below:
Mortech Manufacturing, Inc.
411 North Aerojet Avenue
Azusa, CA 91702
TEL (626) 334-1471
FAX (626) 334-1704
www.mortechmfg.com
info@mortechmfg.com

© COPYRIGHT MORTECH MANUFACTURING, INC., ALL RIGHTS RESERVED.

CAUTION
• Inspect unit and all components for any loosening that may have occurred during shipping •

ATTENTION
All images and Drawing in this manual may not represent your model. Refer to your particular project for exact specifications

DISCLAIMER

This manual contains general instructions for the use, operation, and care of this product. The instructions are not all inclusive. Safe and proper use of this product is solely at the discretion of the user. Safety information is included as a service to the user. All other safety measures taken by the user should be within and under consideration of applicable regulations. It is recommended that training on the proper use of this product be provided before using this product in and actual situation.

Retain this manual for future reference. Include it with the product in the event of transfer to new users. Additional free copies are available upon request from Customer Relations.

Mortech Manufacturing, Inc. has made every effort to ensure that this Manual is accurate; Mortech Manufacturing, Inc. abdicate liability for any inaccuracies or omissions that may have occurred.

Information in this Manual is subject to change without notice and does not represent a commitment on the part of Mortech Manufacturing, Inc. Mortech Manufacturing, Inc. assumes no responsibility for any inaccuracies that may be contained in this Manual. Mortech Manufacturing, Inc. makes no commitment to update or keep current the information in this Manual, and reserves the right to make improvements to this Manual and/or to the products described in this Manual, at any time without notice.

If you find information in this manual that is incorrect, misleading, or incomplete, we would appreciate your comments and suggestions.

PROPRIETARY NOTICE

The information in this manual is the property of Mortech Manufacturing, Inc. Mortech Manufacturing, Inc. reserves all patent rights, proprietary design rights, manufacturing rights, reproductions rights, and sales use rights thereto, and to any article disclosed therein except to the extent those rights are expressly granted to others or where not applicable to vendor proprietary parts.

