



MODEL 1036-3
STAINLESS STEEL EMBALMING STATION
with EMBALMING COLLECTOR

CAUTION

Inspect unit and all components
for any loosening that may have
occurred during shipping

CAUTION

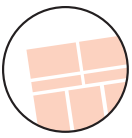
**DO NOT USE CLEANERS
CONTAINING CHLORINE WHEN
CLEANING STAINLESS STEEL**

ATTENTION

Review entire manual before
starting assembly

ATTENTION

All images and Drawing in this manual
may not represent your model.
Refer to your particular project for
exact specifications



Safety Information

It is important that the information provided in this manual is observed. These instructions should be read carefully and observed fully before installation and initial operation.

WARNING

It is crucial that any work performed on Mortech Manufacturing Inc. manufactured items are carried out exclusively by skilled professionals who have the respective training. Improper use, maintenance, parts and service, or modification to the equipment may cause injury and/or damage. Use and maintain the equipment only for the purpose described in this manual. Use only Mortech Manufacturing Inc. prescribed approved parts and service. Use the equipment only as designed by Mortech Manufacturing Inc.

BLOODBORNE DISEASE NOTICE

To reduce the risk of exposure to bloodborne diseases such as HIV-1 and hepatitis when using the equipment, follow the disinfecting and cleaning instructions in this manual.

RECOMMENDED OPERATING SKILLS AND TRAINING

- SKILLS

Operators using the equipment need:

- ☐ A working knowledge of necessary procedures.
- ☐ The ability to carry out necessary service procedures.
- ☐ A complete understanding of the procedures described in this manual.

- TRAINING

- ☐ Read the this manual as prescribed
- ☐ Be trained on the use of the equipment.
- ☐ Practice with the equipment before using it in regular service.
- ☐ Be tested on their understanding of the equipment operation.
- ☐ Record their training.

BEFORE USING THE EQUIPMENT

Personnel working with this equipment needs to read this manual. Assemble of the unit following set instructions, and perform any pre-service checks to confirm the units operates properly.

INSPECTING THE UNIT BEFORE USE

Please take time to inspect all shipment prior to signing delivery ticket. If concealed damage is discovered, save the carton and immediately contact carrier agent to initiate claim of damage.

BE SURE TO CHECK!

- Are all components present?
 - Do the moving parts operate smoothly?
 - Is unit draining properly?
 - Are all nuts, bolts, and pins secured in place?
- If unit has an issue contact Mortech Manufacturing Inc.

INSTRUCTION FOR HANDLING

Adhere to state and/or local certification and regulations for operation of forklift and/or pallet jack. Cargo is extremely heavy, be sure to have the necessary manpower as well as equipment to successfully unload shipment from transport. We recommend a forklift and/or pallet jack with the capacity to lift up to 2000 lbs. to remove cargo from transport.

The forklift can be used to unload receiving products safely by placing the load on the floor, maneuvering the forklift into position, tilting the mast forward to vertical position so the load will be level, lowering the load, and smoothly backing away without dragging. Once cargo is unloaded, positioning equipment for installation will once again require a forklift. Read all manual and note on installation of the unit before attempting installing.

The pallet jack can be used (with a loading dock and maneuverability on and off the transport vehicle) to unload receiving products safely. Maneuvering the pallet jack into position (in the appropriate position within the pallet), lifting the pallet then driving the pallet jack off the transport and safely into the place of installation.

Range of Environmental Condition

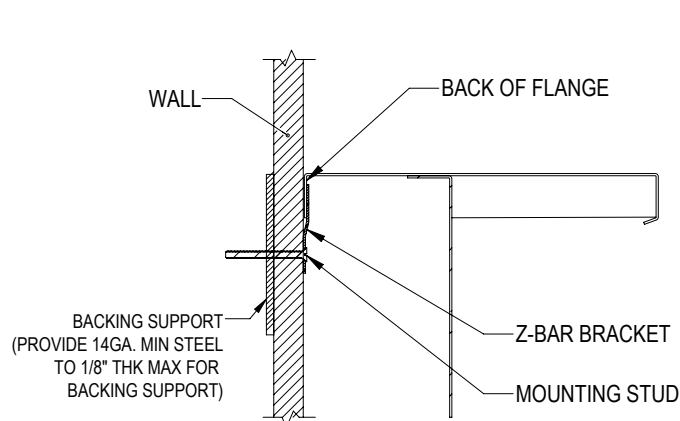
Mortech Manufacturing, Inc. equipment shall be placed in a controlled environment (housing or housed unit) hindering the weathering effects on the installed units. The equipment will have minimal corrosive and eroding factors that can break down the stability and operation of Mortech Manufacturing Inc. equipment. The impact on the equipment by the operator utilizing water or corrosives in the medical procedures can be controlled and responsibility for the cleaning and maintenance placed upon that person. The effects of anthropogenic (man-made) gasses on the environment, such as carbon dioxide (CO₂) that will be omitted from the unit should be minimal.

Due to continuous innovation and product development this installation guide is subject to change without notice.

Please save these instructions for later use.

1036-3 Stainless Steel Embalming Station with Embalming Collector

Installation

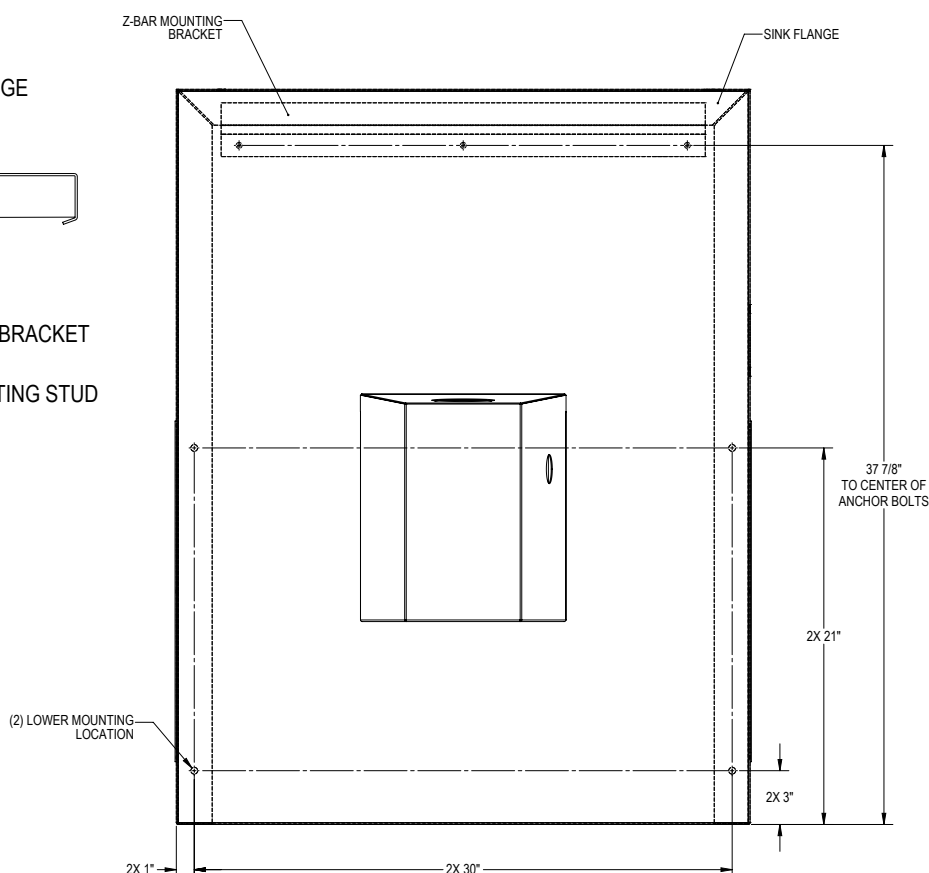


SECTION A-A
SCALE 1 : 4

WALL MOUNTING NOTES:

1. Z-BAR SHIPPED WITHOUT MOUNTING HOLES FOR ADOPTION TO FIELD CONDITIONS. HOLES TO BE DRILLED BY INSTALLER.
2. INSTALL MINIMUM (4) UPPER ANCHORS.
FIRST HOLE: 1" IN FROM SIDE OF Z-BAR.
Z-BAR LENGTH: 27" LONG.
ADDITIONAL ANCHORS CAN BE ADDED AS NEEDED.
3. USE MINIMUM 1/4" TEK SCREWS 2 3/4" LONG. ADJUST LENGTH PER WALL THICKNESS.
4. ANCHORS USED MUST BE FLUSH TO Z-BAR AS MUCH AS POSSIBLE. THEY MUST NOT INTERFERE WITH PLUMBING BEHIND WALL.
5. THE LOWER ANCHORS ARE USED TO KEEP THE BOTTOM OF THE SINK FROM PULLING AWAY FROM THE WALL. THE Z-BAR HOLDS THE WEIGHT OF THE SINK.
6. INSTALLATION IS BASED ON ROUGH-IN MOUNTING DETAIL PROVIDED.

SUPPORT LOCATION FOR EMBALMING STATION ONLY.
ADDITIONAL WALL SUPPORTS MAY BE REQUIRED.



MOUNTING INSTRUCTIONS

Step 1. Verify all utility rough-ins have been supplied in the proper location and per the project specifications. Drawings from Mortech for utilities is provided with the submittal packet information. Utilities can include: water lines, electrical, etc.

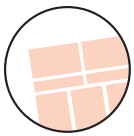
Step 2. (Refer to Figure-A) Verify what type of support structure has been provided for mounting. Use mounting anchors appropriate for support structure.

Step 3. Verify mounting height for "z" bar mounting bracket. The "z" bar mounting bracket is supplied with each station from Mortech. Drawings are provided with the submittal packet showing the mounting height. Mount "z" bracket level with appropriate anchor for the backing support provided. The "z" bar is shorter than the overall length of the unit so you must center the "z" bar relative to the center of the station when mounted. Lengths of stations vary per project so you must reference your submittal information for the station length provided.

Step 4. Some stations are large and heavy so it is best to use a mechanical lift to maneuver the station into position. Make sure the unit is resting level on the fork arms. Sometimes a fork extension will be necessary. Raise the unit position and insert the flange of the station into the "z" bar mounting bracket. Lower into position. The unit will fully rest on the "z" bar. Then raise slightly to take the pressure off.

Step 5. While the lift is still holding the station in position, install the lower anchor at each gusset location. You should install at least (2) anchors per gusset. Gussets are located at each end of the station and (1) or (2) in the center of the unit. Use anchors per above recommendations for type of support structure.

Step 6. The station is now properly anchored to the wall and the lift may be released.



Installation

1036-3 Stainless Steel Embalming Station with Embalming Collector

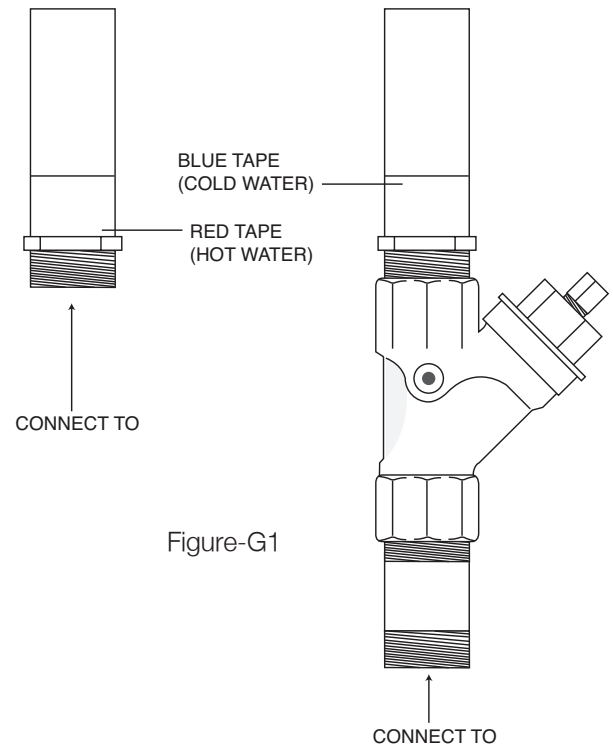
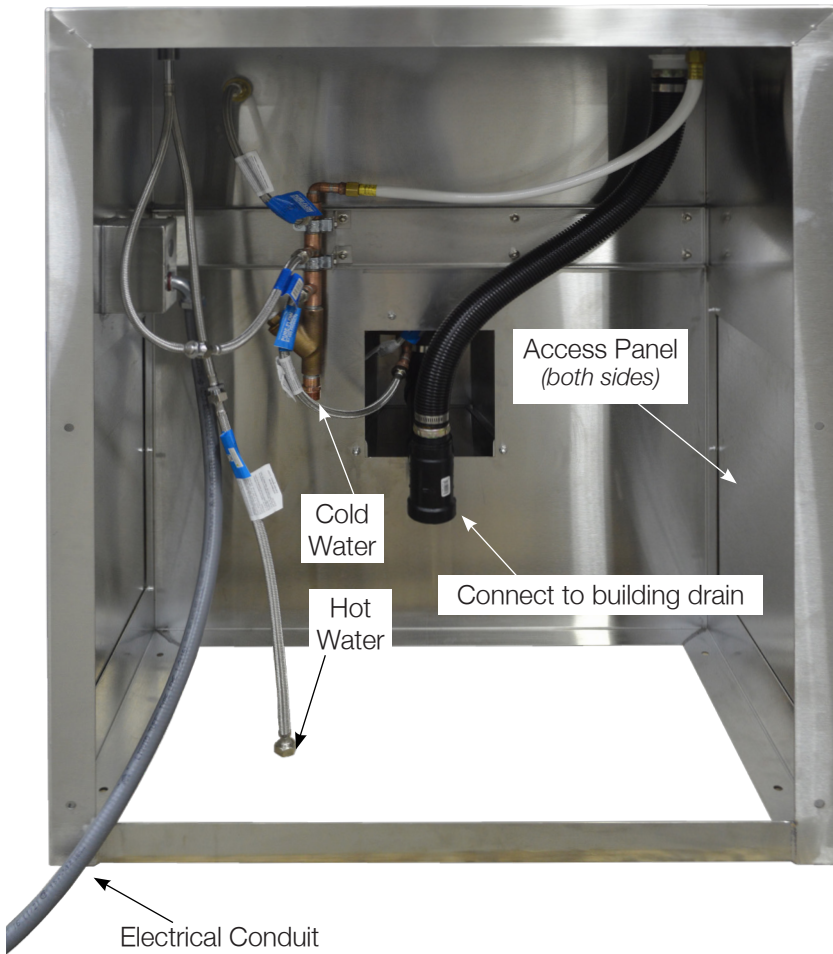


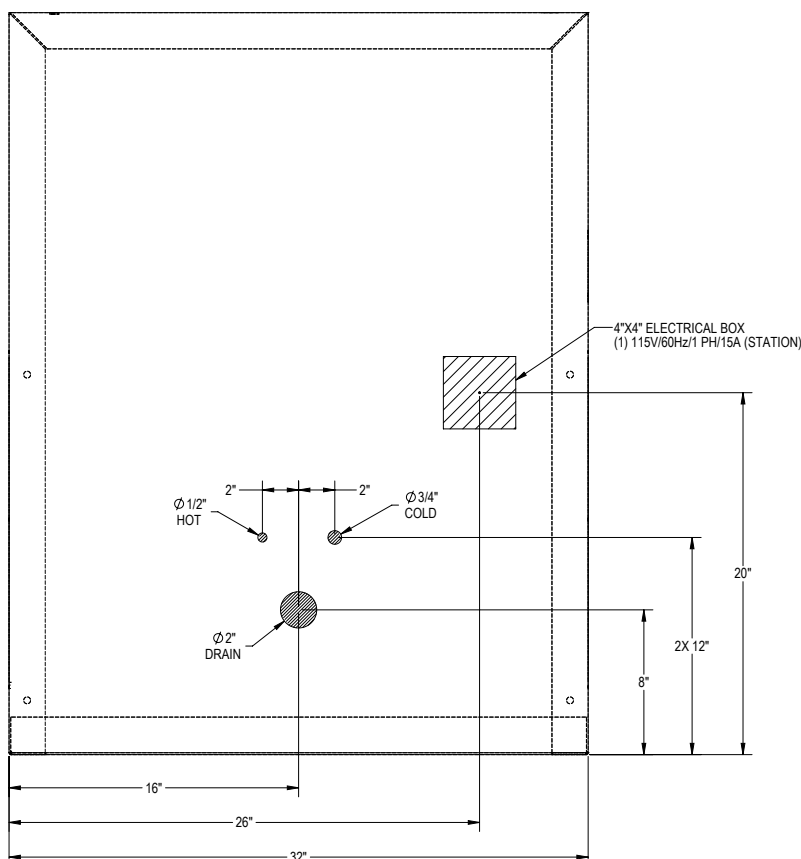
Figure-G1

PLUMBING CONNECTION INSTRUCTIONS

STEP 1: (Refer to Figure-G) Flush out all water lines prior to connection. Debris may be in the lines from construction process. Install shut off valves on each water line. Lines are clearly marked RED for hot and BLUE for cold. (Refer to Figure-G1) The station is provided with a single point connection for hot and cold water. A typical flex line can be used for connection.

Step 2: Connect drain line to sink basin or disposal unit, depending on the option provided. (Refer to Figure-H)

See Disposal manufacturers manual.



1036-3 Stainless Steel Embalming Station with Embalming Collector

Electrical

ELECTRICAL

1036-3 Stainless Steel Embalming Station with Embalming Collector

~120VAC/60hz/1ph
(15A Circuit-GFCI)

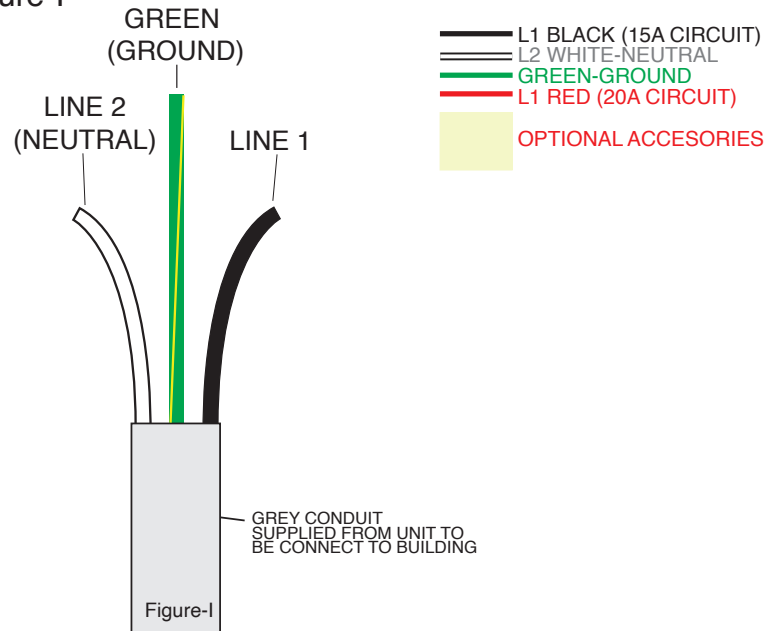
Main Power Disconnect To Be
Recommended or Supplied:

ELECTRICAL CONNECTION INSTRUCTIONS

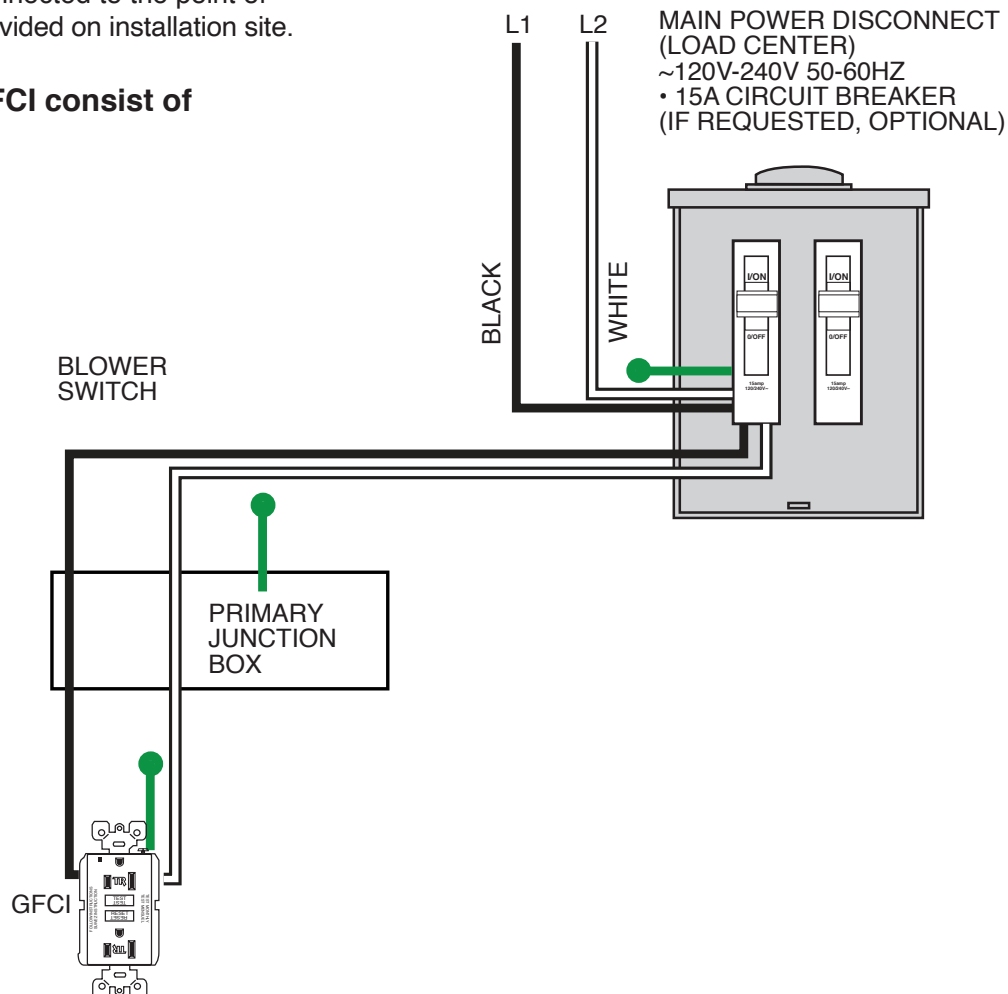
- 1: (Refer to Figure-I for electrical wiring within the conduit) Connect electrical lines from station to building. Units are provided with watertight conduit lines for connection.
2. A waterproof load center (if requested, optional) with 1 circuit breaker disconnect with a 15A fuse (15A Circuit-GFCI) will be attached to the unit itself. Then connected to the point of connection provided on installation site.

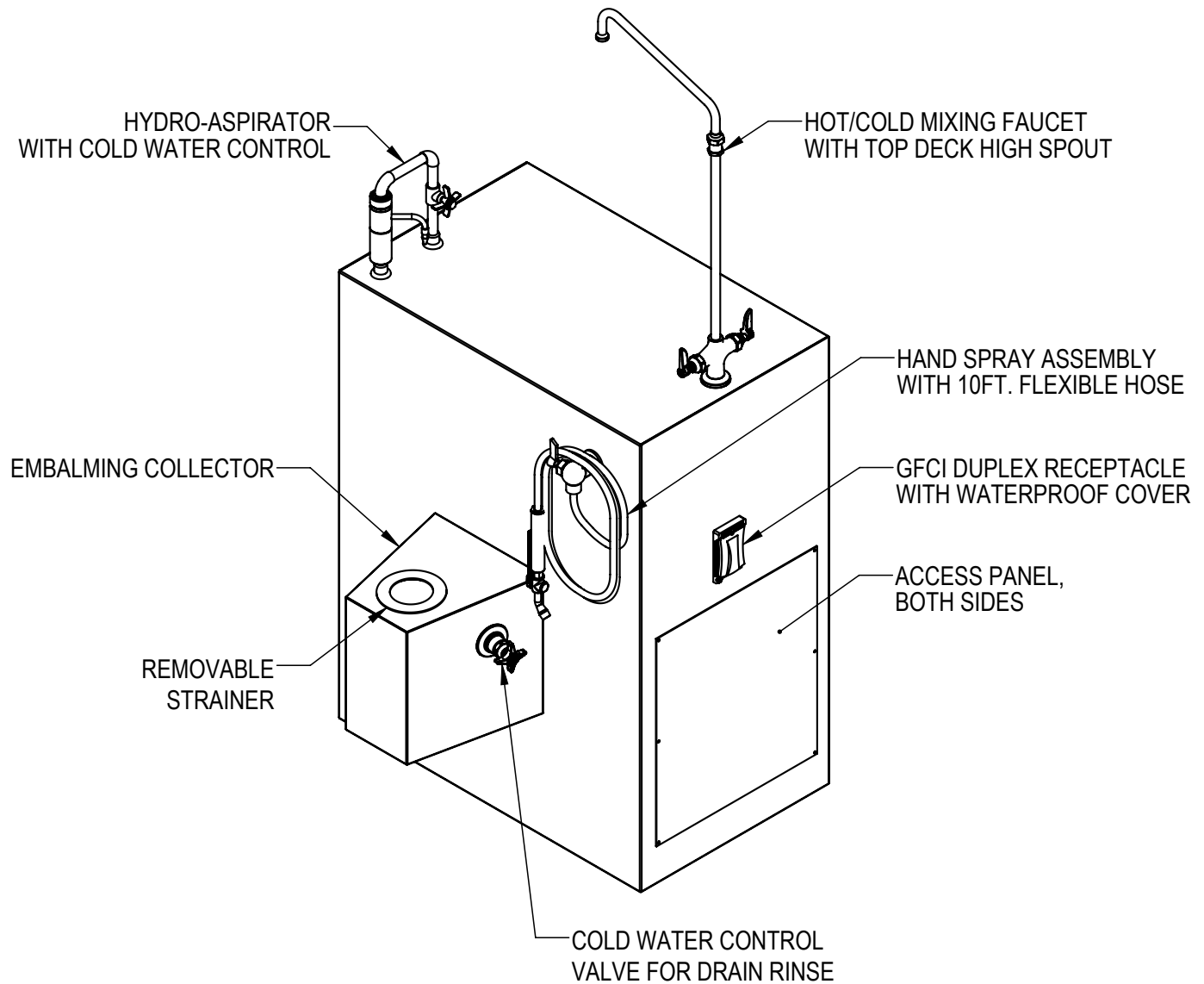
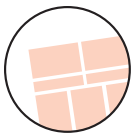
15A Circuit-GFCI consist of
GFCI - 20A

Figure-I



15A CIRCUIT-GFCI



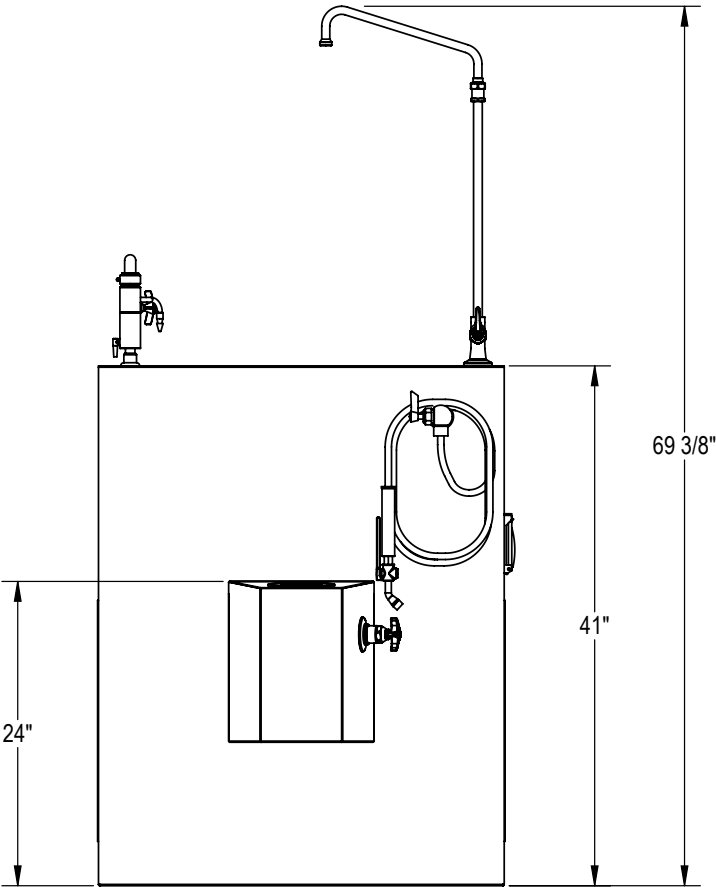
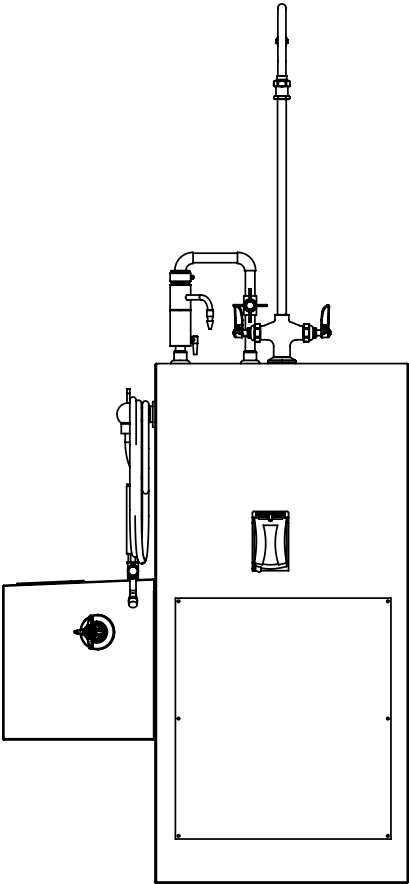
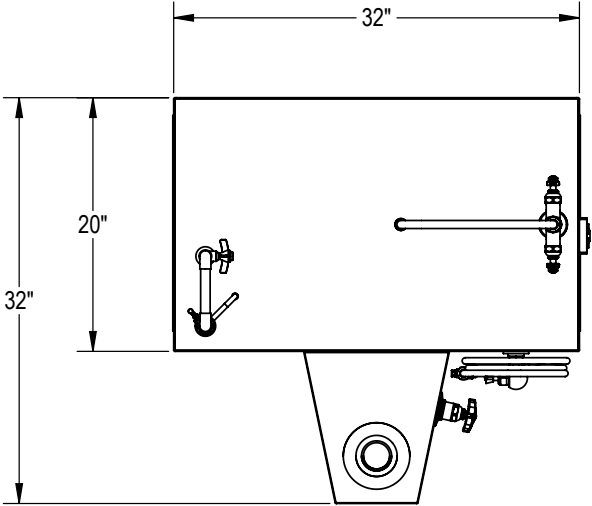


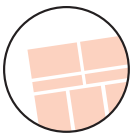
STANDARD DESIGN FEATURES

- All stainless steel construction on rear base housing
- Embalming collector with continuous rinse and cold water control to adjust water flow
- Removable strainer
- Hot and cold water mixing faucet mounted on top deck with high spout for use with you embalming machine
- Deluxe aspirator with reverse flow for additional waste removal: "reverse flow" feature instantly relieves suction clogging by providing a reverse pressure of water.
- Spray hose assembly with spray nozzle and 10 feet/3 meters of flexible hose
- Back flow protection for all fixtures to protect your building water supply
- GFCI duplex receptacle w/waterproof cover
- Access panel
- Internally plumbed and wired requiring only single point connection of water and power

**1036-3 Stainless Steel Embalming Station
with Embalming Collector**

Parts Listing

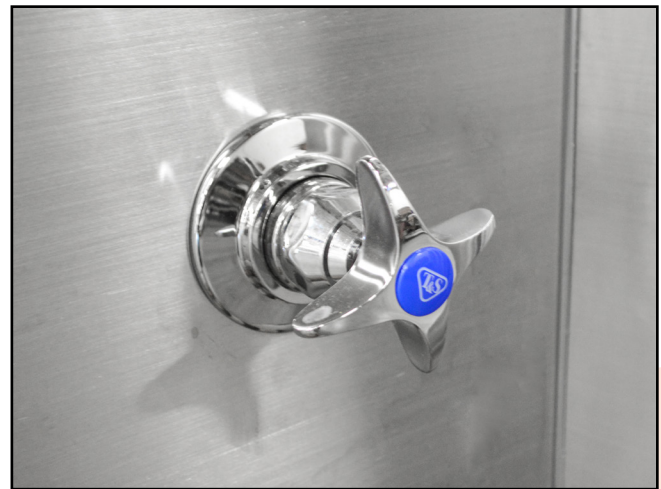
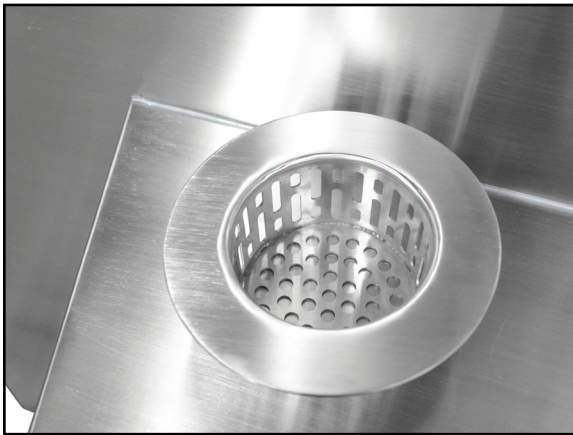




EMBALMING COLLECTOR

Removable drain to capture large waste. Continuous rinse moves debris of harmful contaminants and air-borne pathogens.

- Full stainless steel construction, makes it aesthetically pleasing and easy to clean and maintain.
- Cold water controls adjusts water flow.
- Connect plumbing per local code.
- Single point water connection and drain connection.



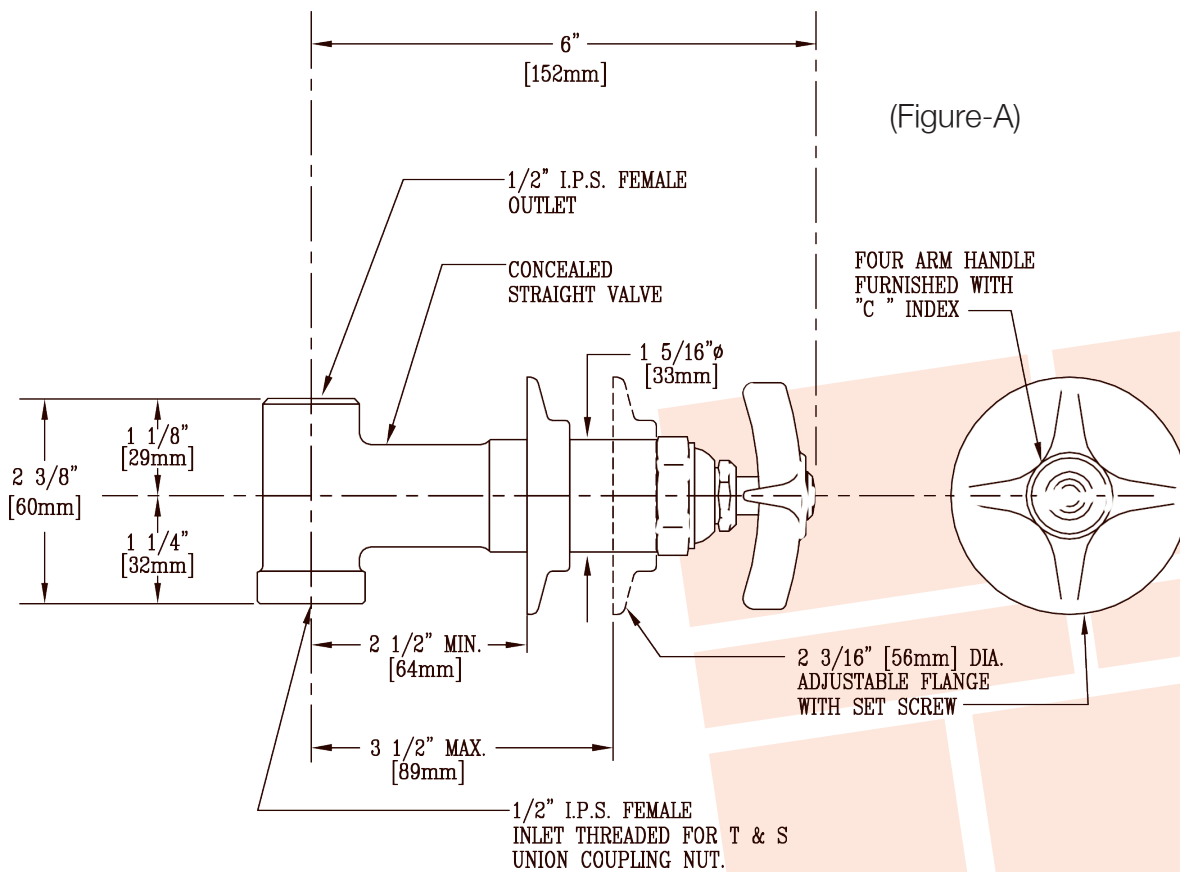
1036-3 Stainless Steel Embalming Station with Embalming Collector

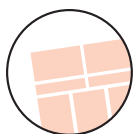
Standard Design Components

T & S BRASS AND BRONZE WORKS, INC.

MODEL: #B-1025 control valve

- **Body Mount:** Wall
- **Body:** Concealed
- **Cartridge-Spindle:**
1/4 Turn Compression
- **Handle:** 4-Arm (Cross)





SPRAY HOSE ASSEMBLY

SINGLE WALL CONTROL VALVE:

Model #2700

SPRAY HEAD:

Model #10820

SPRAY HANDLE:

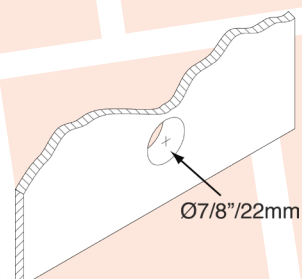
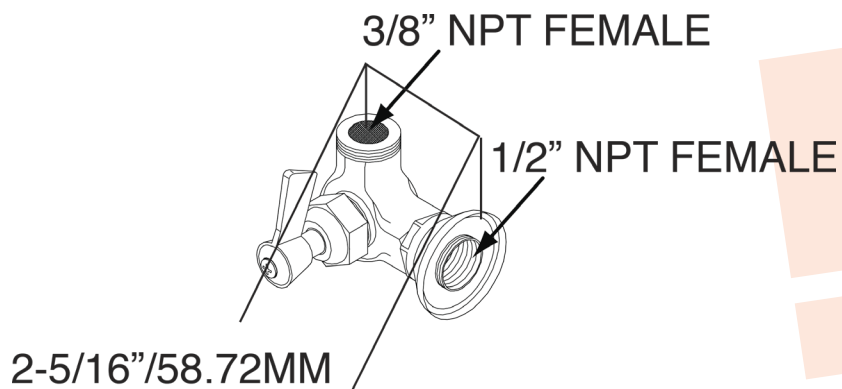
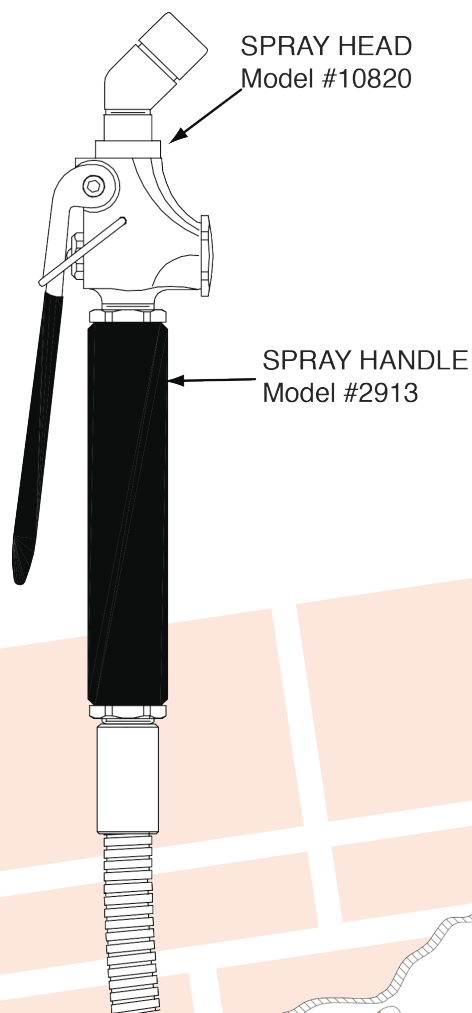
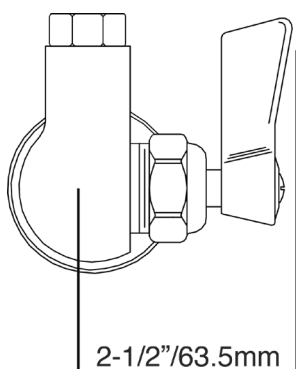
Model #2913

SPRAY HOSE: Polyurethane coil

Flexible coil is a lightweight tough polyurethane hose which eliminates kinking and abrasions.

Features

- 1/4" ID X 10 ft. MPT swivel and rigid
 - Outstanding coil memory
 - Oil and fuel resistance
- Wash hands after handling.



1036-3 Stainless Steel Embalming Station with Embalming Collector

Standard Design Components

BACKFLOW PREVENTERS

ATTENTION INSTALLER

Before installing, flush out pipe lines to remove scale and other foreign matter. The valves can be installed horizontally or vertically. Install the valve in the line with the arrow on valve body pointing in the direction of flow.

Application

The Model N9 series are recommended for continuous pressure type installations. Potable water must be protected from backflow of hazard substances used in equipment container, sinks and set tubs. In the event of negative supply pressure such contaminated fluids will not backflow to the supply source by backsiphonage. For clarification of hazard substances consult Local Plumbing Authority or Health Department.

Maintenance

Annual inspection is required, since cleaning and checking of all water system safety and control valves assures maximum life and proper product function.

Temperature and Pressure

Maximum Pressure 150psi (10.3 bar).

Maximum Temperature 140°F (60°C).

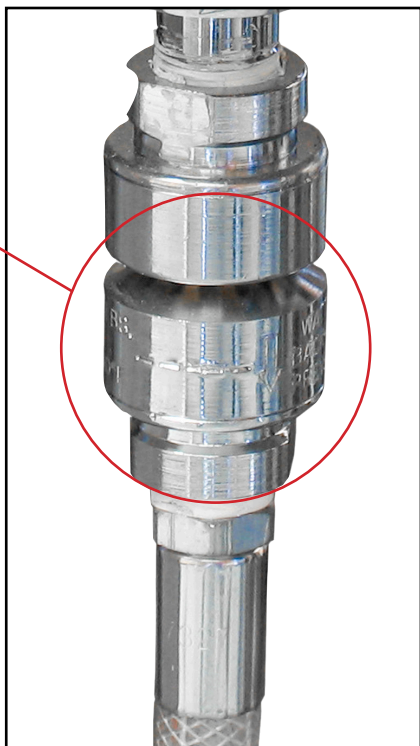
Annual inspection of all water system safety and control valves is required and necessary. Regular inspection, testing and cleaning assures maximum life and proper product function. Teflon® is a registered trademark of the E.I. Dupont de Nemours & Company.

Limited Warranty

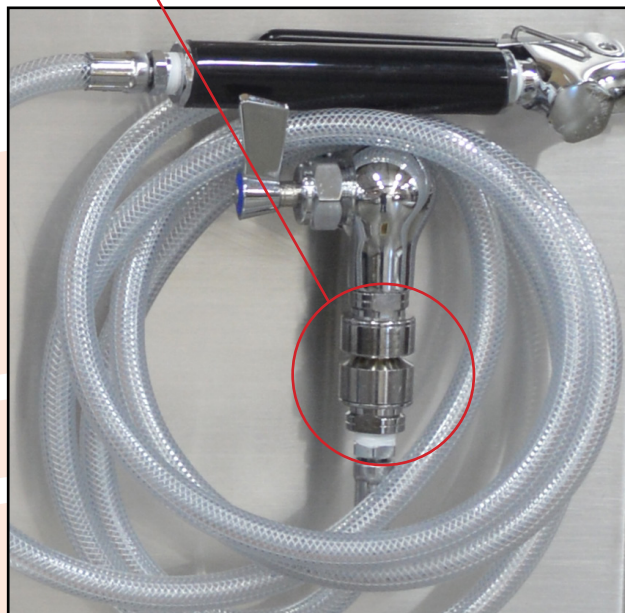
Watts Regulator Co. (the "Company") warrants each product to be free from defects in material and workmanship under normal usage for a period of one year from the date of original shipment. In the event of such defects within the warranty period, the Company will, at its option, replace or recondition the product without charge.

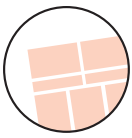
THE WARRANTY SET FORTH HEREIN IS GIVEN EXPRESSLY AND IS THE ONLY WARRANTY GIVEN BY THE COMPANY WITH RESPECT TO THE PRODUCT. THE COMPANY MAKES NO OTHER WARRANTIES, EXPRESS OR IMPLIED. THE COMPANY HEREBY SPECIFICALLY DISCLAIMS ALL OTHER WARRANTIES, EXPRESS OR IMPLIED, INCLUDING BUT NOT LIMITED TO THE IMPLIED WARRANTIES OF MERCHANTABILITY AND FITNESS FOR A PARTICULAR PURPOSE.

**BACKFLOW
PREVENTER**



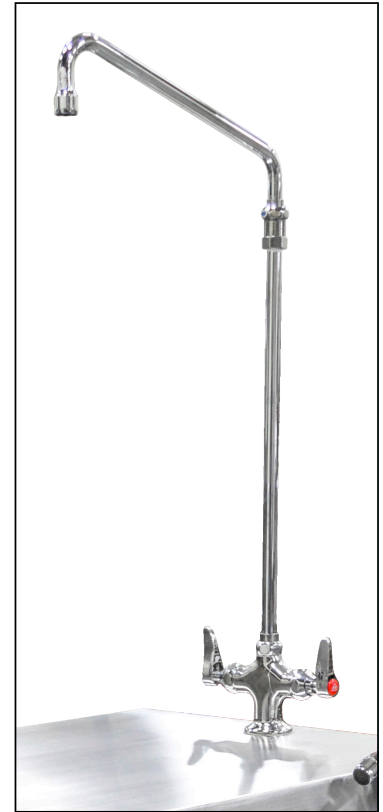
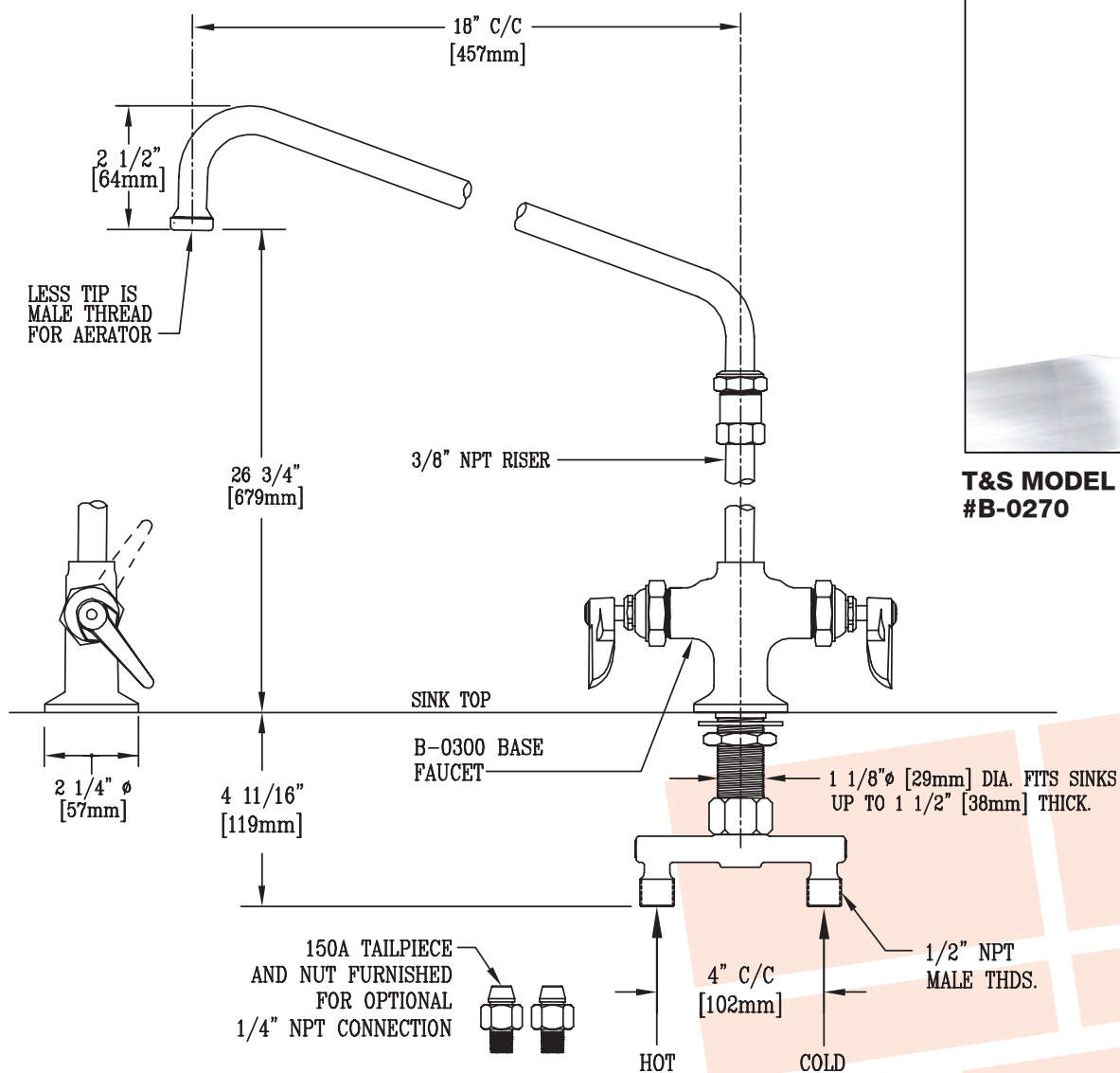
**BACKFLOW
PREVENTER**





**DOUBLE PANTRY MIXING FAUCET
with 18 INCH SWING NOZZLE**

T&S MODEL #B-0270



**T&S MODEL
#B-0270**



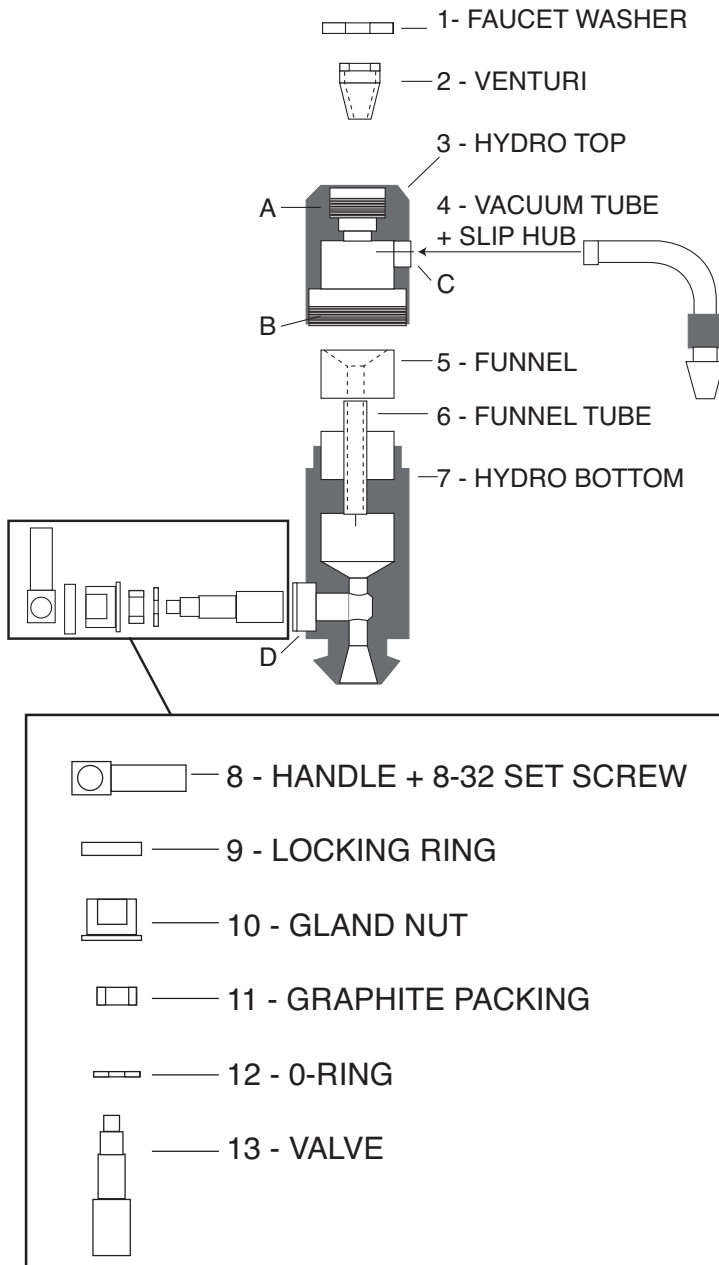
1036-3 Stainless Steel Embalming Station with Embalming Collector

Standard Design Components

HYDRO-ASPIRATOR

A - VACUUM 3/4-11.5 FAUCET THREAD
B - 1.500-28 THREAD
C - 1/8-27 NPS PIPE THREAD
D - 3/4-32 THREAD

OVERALL ASSEMBLY LENGTH = 5.750 INCHES



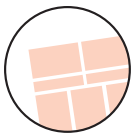
Mandatory operation requirements:

- Minimum 1/2" supply line
- Minimum 60 lbs of water pressure
- Minimum 4 gallons per minute of water flow through unit

Vacuum up to 26 inches can be maintained at these pressures. Trocar or aspiration line is attached to the aspiration tube. Diverter handle at lower end must be parallel to length of body of aspirator. To back flush the trocar/aspiration line, turn the diverter handle perpendicular to the length of the aspirator. Tubing can be added to the outlet bottom of the aspirator to direct the flow of water into the sink drain.

Reorder No. LW480





VACUUM BREAKER

Size: 3/4" (20mm) thread

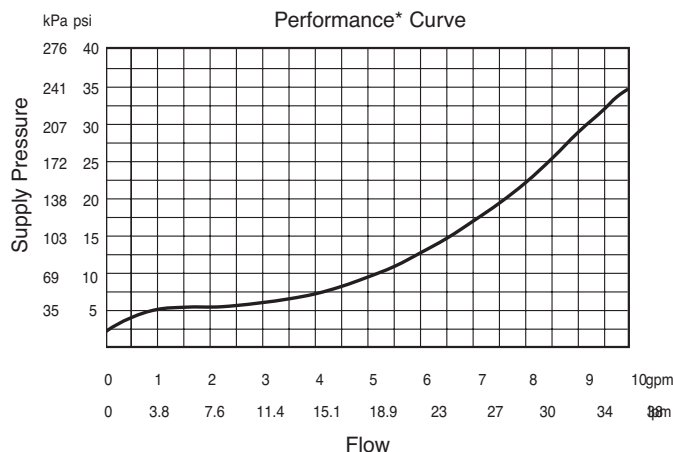
Vacuum Breaker is a line of unique vacuum breakers specially made to permit the attachment of portable hoses to hose thread faucets. Designed to prevent the flow of contaminated water back into the potable water supply, these devices require no plumbing changes, and screw directly onto a sill cock.

Features

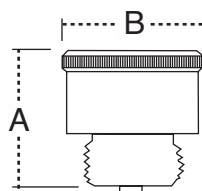
- Stainless steel working parts for longevity
- Durable rubber diaphragm and disc for consistent positive seating

Use only with approved hose bibbs or hose fittings having four or more full American National Hose (NH) threads.

Capacity



Dimensions – Weights



MODE	SIZE (DN)		DIMENSION				WEIGHT	
	In.	mm	A		B		oz.	gm.
8B	3/4HT	20	1/2	38	1 3/8	35	4.0	113.4

Installation

Thread Vacuum Breaker onto Aspirator, tighten. Vacuum Breaker is secured by tightening the set screw.

To Drain

Vacuum Breaker can be drained to prevent freezing by removing and pulling down gently on the stem.

IMPORTANT

Do not use with continuous pressure or use where discharge of water could cause damage.



**1036-3 Stainless Steel Embalming
Station with Embalming Collector**

Standard Design Components

LIQUID-TUFF™
(Type LFNC-B)

Technical Specifications

UL Liquidtight Flexible Non-Metallic Conduit

Scope

This specification covers AFC Cable Systems, Inc. UL LIQUID-TUFF™ Integral Liquidtight Flexible Non-Metallic Conduit, Type LFNC-B designed for use in wet, dry or oily locations as a flame resistant, non-metallic raceway for power, control and communications cables in compliance with Article 356 of the National Electrical Code. The product is UL Listed for 80°C (176°F) in a dry location, 60°C (140°F) in a wet location and 70°C (158°F) in an oily location. It is also UL Listed through 2-inch trade sizes for direct burial, outdoor use and sunlight resistance. In addition the product is CSA certified for use at 75°C (167°F) in dry and oily locations and for minus 18°C (0°F) low temperature applications. This Liquidtight Flexible Non-Metallic Conduit is manufactured and tested in accordance with Underwriters Laboratories Inc. Standard UL 1660 and CSA International Standard CSA C22.2 Number 227.2. The product carries the UL Listing Mark and the CSA Certification Mark.

Construction

Liquidtight Flexible Non-Metallic Conduit, Type LFNC-B is a raceway of circular cross section with a smooth polyvinyl chloride (PVC) inner surface and an integral reinforcing member within the conduit wall. The wall thicknesses and dimensions of the integral conduit shall comply with Table 6.4 of UL 1660 and Table 1B of CSA C22.2 No. 227.2 which are summarized in Table 1.

Grounding

A separate Grounding conductor is required by both the National Electrical Code and the Canadian Electrical Code for all trade sizes.

Markings

The outer surface of the conduit shall be clearly marked with a legible print legend in accordance with UL 1660 and CSA C22.2 No. 227.2.



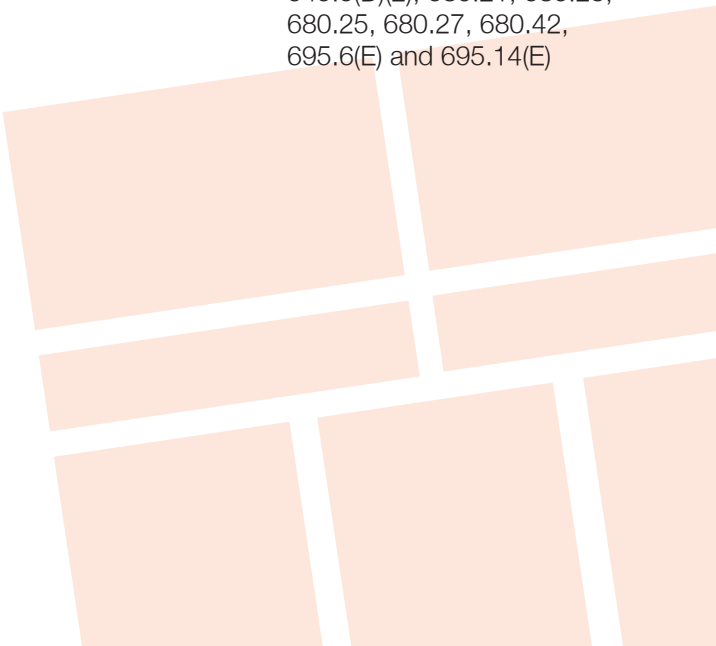
Performance Tests

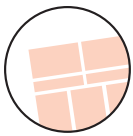
The completed UL LIQUID-TUFF™ Liquidtight Flexible Non-Metallic Conduit, Type LFNC-B shall meet all of the performance requirements contained in UL 1660 and CSA C22.2 No. 227.2 and outlined in Appendix A.

- Package lengths in excess of 100' contain splices; these splices must be cut out before use.

Reference Standards

UL 1660	Standard for Liquidtight Flexible Non-Metallic Conduit
CSA C22.2 No. 227.2	Standard for Flexible Liquidtight Non-Metallic Conduit
UL File References	UL E123464; CSA 69271
NEC® Articles:	356, 390.15, 501.10(B)(2), 502.10(A)(2), 503.10(A)(2), 511.7(A)(1), 620.21, 645.5(D)(2), 680.21, 680.23, 680.25, 680.27, 680.42, 695.6(E) and 695.14(E)





GFCI

Features and Benefits:

Lockout Action

- Automatically tests every time the RESET button is pushed.
- The trip latching mechanism in SmartLockPROGFCIs is a one-piece "T" design for efficient operation
- There are 4 sets of contacts for load terminals and face. SmartLockPROGFCIs use a patented bifurcated bridge contact for efficient operation
- The SmartLockPROGFCI with lockout action is designed and patented by Leviton

General

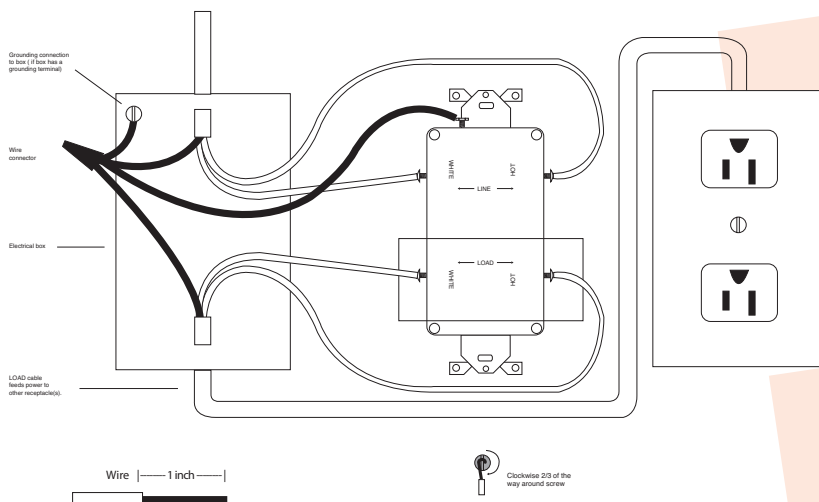
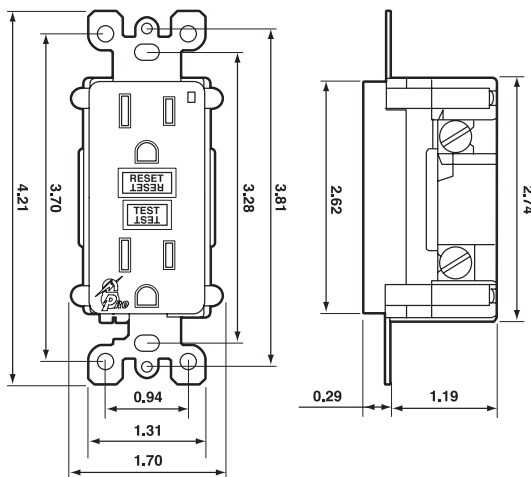
- Trip threshold meets or exceeds UL requirements for tripping time
- Improved immunity to high-frequency noise reduces nuisance tripping
- Impact-resistant thermoplastic cover and body
- Advanced electronics design provides superior resistance to electrical surges and over-voltages

- Expanded wiring options with nine back-wire holes (two for each line and load connection plus one for ground with an internal clamp)
- Silver alloy contacts
- Versions available with matching TEST and RESET buttons and traditional black and red models
- Compatible with all Decora® devices and wallplates; available in select Decora colors
- Hospital Grade and Blank Face Switch-Rated models available
- Packed with coordinating wallplate
- Backed by Leviton's Limited Two-Year Warranty
- Agency Standards & Compliance:
 - Meet or exceed all new UL requirements for July 28, 2006
 - UL Standard 943 Class A (GFCI) and 498 (Receptacles)
 - UL Listed (File # E-48380)
 - CSA Certified (File #LR-57811)
 - NOM Certified (File #057)

Material Characteristics

Environmental: Flammability UL-94 V2 Rating

Operating Temperature: -35°C to 65°C



1036-3 Stainless Steel Embalming Station with Embalming Collector

Standard Design Components

RECEPTACLE COVER

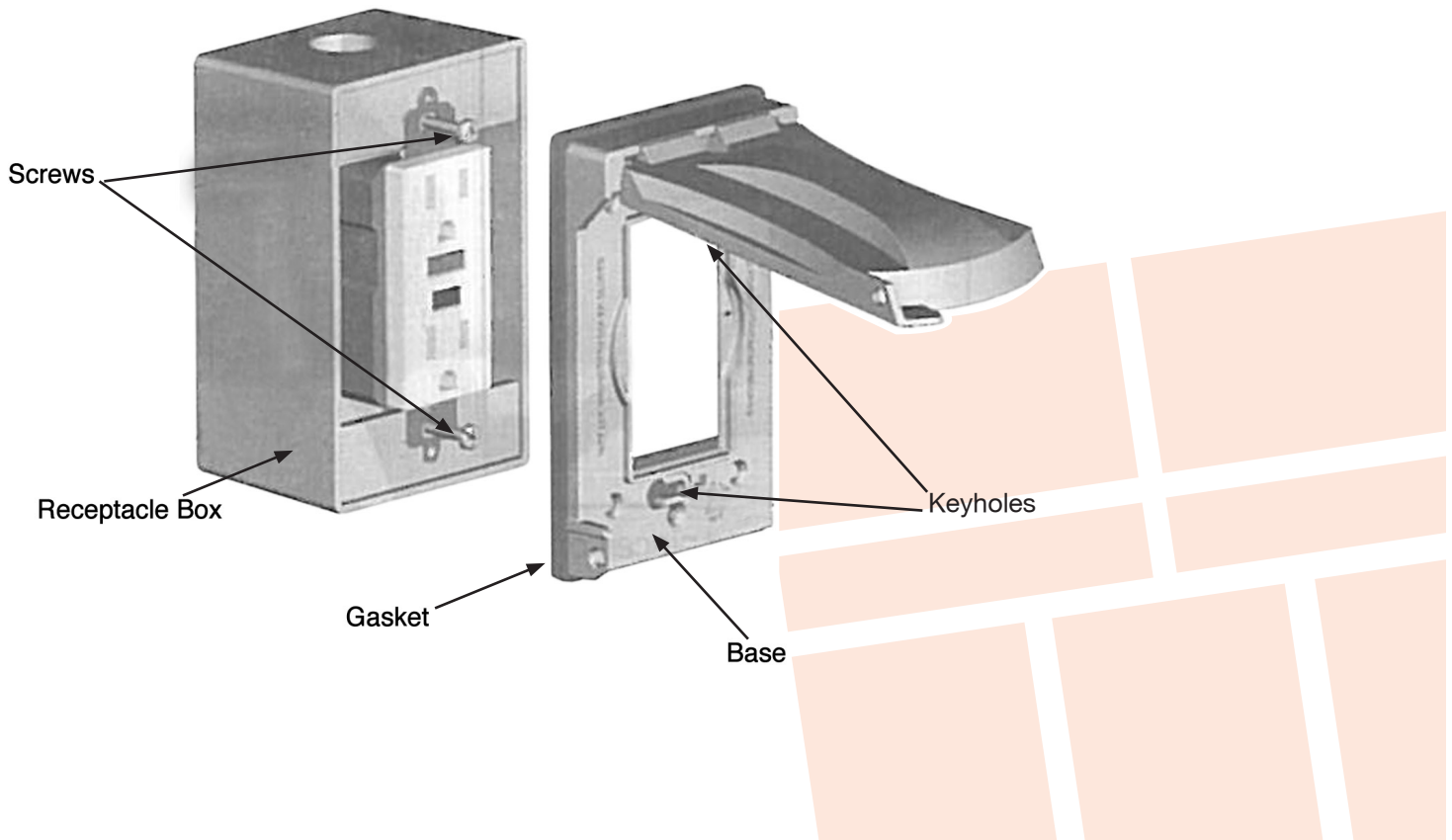
Type: Vertical

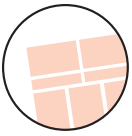
Color: Gray

- Heavy Duty Die Cast Metal Construction
- Patented Quick-Fit™ Key Hole Mount for Easy Installation
- Patented Universal-Fit™ Adapter Technology
- Lockable Tab
- Premium Powdercoat Finish
- Spring Hinge Closure
- UL Listed & 2008 NEC Compliant



Diagram: Vertical GFCI Installation





Stainless Steel Equipment Maintenance

MAINTENANCE INSTRUCTIONS

The unit requires regular maintenance and follow the manufactures directions.

DISINFECTING AND CLEANING

Clean all surfaces of the stainless steel with a hard surface disinfectant/cleaner such as Sheila Shine® or SaniZene®. Follow instructions on container.

DISINFECTING, CLEANING COMPONENTS & ACCESSORIES

Hand wash with disinfecting soap and warm water. Rinse well with clear water and dry with a towel. (Clean on a regular basis to prolong work life).

WARNING Improper maintenance can cause injury. Maintain only as prescribed in this manual. Overall, it is very simple to maintain. If you use for its intended purpose, it will provide many years of reliable service.

CARE OF STAINLESS STEEL

Stainless steel products have a directional #4 brushed finish. This finish is produced using a very fine abrasive cloth. Dragging heavy equipment across the stainless steel surfaces will cause noticeable scratching. Pitting/corrosion can occur when carbon steel products are allowed to remain in contact with the stainless steel in the presence of moisture. (Examples- Steel Wool pads left in the bottom of the sink). Stainless steel can be damaged by exposure to acids.

TYPES OF SURFACE CONTAMINANTS

Dirt - Consist of accumulated dust and a variety of contaminants. Warm water with or without a gentle detergent is sufficient. Next in order are mild non-abrasive powders such as typical household cleaners. These can be used with warm water, bristle brushes, sponges, or cleaning cloths. (Do not use carbon steel brushes or steel wool they may leave particles embedded on the surface which can lead to RUSTING.) For more aggressive cleaning, a small amount of vinegar can be added to the scouring powder. When water contains mineral solids, which leave water spots, it is advisable to wipe the surface completely with dry towels.

Fingerprints and Stains - Fingerprints and mild stains resulting from normal use are the most common surface contaminates. This affect the appearance and seldom have an effect on corrosion resistance. They can be removed with a glass cleaner or by gentle rubbing with a paste of soda ash (sodium carbonate) and water applied with a soft rag. Followed by a thorough warm water rinse and towel dry.

Shop Oil and Grease - These soils may be corrosive and may not allow the surface to maintain passivity, and so removal is a necessity. Soap or detergent and water may be used or a combination of detergent and water plus a solvent.

TYPES OF CLEANERS AND METHODS

General Precautions Avoid using abrasive cleaners unless absolutely necessary. A "soft abrasive," such as pumice, should be used. Many cleaners contain corrosive ingredients, rinse with clean water.

Clean Water and Wipe - A soft cloth and clean warm water should always be the first choice for mild stains, loose dirt and soils. A final rinse with clean water and a dry wipe will eliminate the possibility of water stains.

Solvent Cleaning - Organic solvents can be used to remove fresh fingerprints, oils and greases that have not

had time to oxidize or decompose. The preferred solvent is one that does not contain chlorine, such as acetone, methyl alcohol, and mineral spirits.

EFFECTIVE CLEANING METHODS

Commercial Cleaners - Many commercial cleaners compounded from phosphates, synthetic detergents, and alkalis are available for the cleaning of severely soiled or stained stainless surfaces. When used with a variety of cleaning methods, these cleaners can safely provide effective cleaning.

SCRATCH REPAIR

Surface scratches can be repaired using the following technique. Depending on the severity of the scratch, it may be possible to completely remove it. Sand the scratch using 120 grit emery cloth or paper and firm pressure. Always sand in the direction of the grain. Avoid the natural tendency to sand in an arc, instead sand in a perfectly straight line. Sand until the scratch is gone.

Polish using 3M Scotch Brite pads - Very Fine Grade. Use the same motions as with sanding. Polish until the original finish is restored. Wash and wipe the surface completely with dry towels.

RUST REMOVAL

Rust can be repaired using the following technique. Sand the scratch using 120 grit emery cloth or paper and firm pressure. Always sand in the direction of the grain. Avoid the natural tendency to sand in an arc, instead sand in a perfectly straight line. Sand until the rust is gone. Polish using 3M Scotch Brite pads - Very Fine Grade. Use the same motions as with sanding. Polish until the original finish is restored. Wash and wipe the surface completely with dry towels.

5 Stainless Steel Mistakes NOT to Make When Cleaning

1. Do not use abrasive cleaners that will scratch the surface. Depending on the surface finish of your stainless steel, abrasive cleaners can cause scratching. A dull finish, probably will not show scratching as much as mirror or highly polished finishes. Test the cleaner in a hidden spot. It's also a good idea to work from the least risky type (water) of cleaning to the heavy duty stuff.

2. Do not forget to rinse. Gritty or dirty water can leave a residue on your finish. It can also stain or pit the surface of your stainless steel. Rinse completely. Residue from cleaning solutions left on a stainless steel surface can stain or damage finish.

3. DO NOT USE CLEANERS CONTAINING CHLORINE.

While it may be second nature to bleach everything, stainless steel and chlorine do not mix. Stay away from the bleach when you clean stainless steel. Be aware that bleach can be included in different types of cleaners. If you accidentally get a cleaner on your stainless steel you'll need to rinse it off and quickly.

4. DO NOT USE STEEL WOOL OR STAINLESS BRUSH

These products leave little particles in the surface of the steel and inevitably these particles begin rusting and staining the surface of the steel. They also can excessively scratch the surface of your stainless steel. *Stay completely away from steel wool and steel brushes.*

5. Do not assume it's the cleaner. If you do have some spotting or staining, and you've followed all of the rules, it may not be the stainless steel cleaner. Water, especially hard water, can leave spotting and staining on stainless steel surfaces. Towel dry after rinsing can end the problem. Sometimes, even water is an enemy to stainless steel.

Maintenance Record

[illegible]



Training Record

[illegible]

WARRANTY

Mortech Manufacturing, Inc. warrants all fabrications to be free of defects due to its own workmanship and materials.

CONTINENTAL UNITED STATES:

Repair and/or replacement of materials furnished that may develop such defects, will be warranted for a period of one year from the date of shipment. Items not manufactured by Mortech Manufacturing, Inc. will receive the manufacturer's warranty.

INTERNATIONAL:

(For validation of warranty, installation location (physical address) required) Replacement of parts furnished that may develop such defects, will be warranted for a period of (18) months from the date of shipment. Shipping and Labor is not warranted. Items not manufactured by Mortech Manufacturing, Inc. will receive the manufacturer's warranty.

PARTS AND SERVICE

Customer relations and product support are important aspects of Mortech Manufacturing, Inc.

For assistance with this or any of our fine products please contact us below:

Mortech Manufacturing, Inc.

411 North Aerojet Avenue

Azusa, CA 91702

TEL (626) 334-1471

FAX (626) 334-1704

www.mortechmfg.com

info@mortechmfg.com

© COPYRIGHT MORTECH MANUFACTURING, INC.,
ALL RIGHTS RESERVED.

CAUTION

**Inspect unit and all components
for any loosening that may have
occurred during shipping**

ATTENTION

All images and Drawing in this manual
may not represent your model.
Refer to your particular project for
exact specifications

DISCLAIMER

This manual contains general instructions for the use, operation, and care of this product. The instructions are not all inclusive. Safe and proper use of this product is solely at the discretion of the user. Safety information is included as a service to the user. All other safety measures taken by the user should be within and under consideration of applicable regulations. It is recommended that training on the proper use of this product be provided before using this product in and actual situation.

Retain this manual for future reference. Include it with the product in the event of transfer to new users. Additional free copies are available upon request from Customer Relations.

Mortech Manufacturing, Inc. has made every effort to ensure that this Manual is accurate; Mortech Manufacturing, Inc. abdicate liability for any inaccuracies or omissions that may have occurred.

Information in this Manual is subject to change without notice and does not represent a commitment on the part of Mortech Manufacturing, Inc. Mortech Manufacturing, Inc. assumes no responsibility for any inaccuracies that may be contained in this Manual. Mortech Manufacturing, Inc. makes no commitment to update or keep current the information in this Manual, and reserves the right to make improvements to this Manual and/or to the products described in this Manual, at any time without notice.

If you find information in this manual that is incorrect, misleading, or incomplete, we would appreciate your comments and suggestions.

PROPRIETARY NOTICE

The information in this manual is the property of Mortech Manufacturing, Inc. Mortech Manufacturing, Inc. reserves all patent rights, proprietary design rights, manufacturing rights, reproductions rights, and sales use rights thereto, and to any article disclosed therein except to the extent those rights are expressly granted to others or where not applicable to vendor proprietary parts.

