



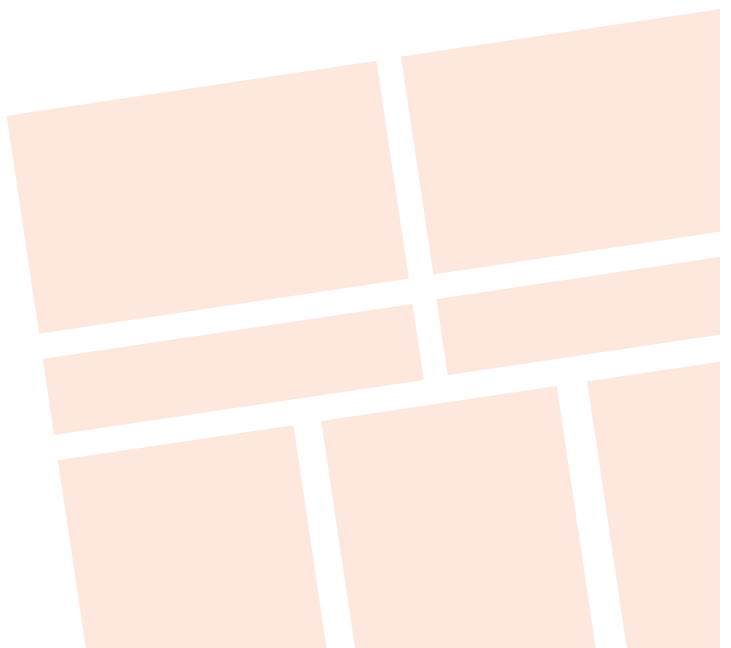
MODEL 1036-9
STAINLESS STEEL
EMBALMING STATION

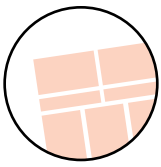
CAUTION

- Inspect unit and all components for any loosening that may have occurred during shipping •

ATTENTION

- Review entire manual before starting assembly





It is important that the information provided in this manual is observed. These instructions should be read carefully and observed fully before installation and initial operation.

WARNING

It is crucial that any work performed on Mortech Mfg. Inc. manufactured items are carried out exclusively by skilled professionals who have the respective training. Improper use, maintenance, parts and service, or modification to the equipment may cause injury and/or damage. Use and maintain the equipment only for the purpose described in this manual. Use only prescribed approved parts and service. Use the equipment only as designed by Mortech mfg. Inc.

BLOODBORNE DISEASE NOTICE

To reduce the risk of exposure to bloodborne diseases such as HIV-1 and hepatitis when using the equipment, follow the disinfecting and cleaning instructions in this manual.

OPERATING SKILLS AND TRAINING SKILLS

Operators using the equipment needs

- A working knowledge of necessary procedures.
- The ability to carry out necessary service procedures.
- A complete understanding of the procedures described in this manual.

TRAINING

- Be trained on the use of the equipment.
- Read the manual
- Practice with the equipment before using it in regular service.
- Be tested on their understanding of the equipment operation.
- Record their training.

BEFORE USING THE UNIT

Personnel working with this unit needs to read this manual. Assemble of the unit following instructions, and perform any pre-service checks to confirm the units operates properly.

INSPECTING THE UNIT BEFORE USE

Please take time to inspect all shipment prior to signing delivery ticket. If concealed damage is discovered, save the carton and immediately contact carrier agent to initiate claim of damage.

BE SURE TO CHECK

- Are all components present?
- Do the moving parts operate smoothly?
- Is unit draining properly?
- Are all nuts, bolts, and pins secured in place?
If unit has an issue contact customer relations.

INSTRUCTION FOR HANDLING

Adhere to state and/or local certification and regulations for operation of forklift and/or pallet jack. Cargo is extremely heavy, be sure to have the necessary manpower as well as equipment to successfully unload shipment from truck. We recommend a forklift and/or pallet jack with the capacity to lift up to 2000 lbs. to remove cargo from truck.

The forklift can be used to unload receiving products safely by placing the load on the floor, maneuvering the forklift into position, tilting the mast forward to vertical position so the load will be level, lowering the load, and smoothly backing away without dragging. Once cargo is unloaded, positioning unit for installation will once again require a forklift. Read all manual and note on installation of the unit before installing.

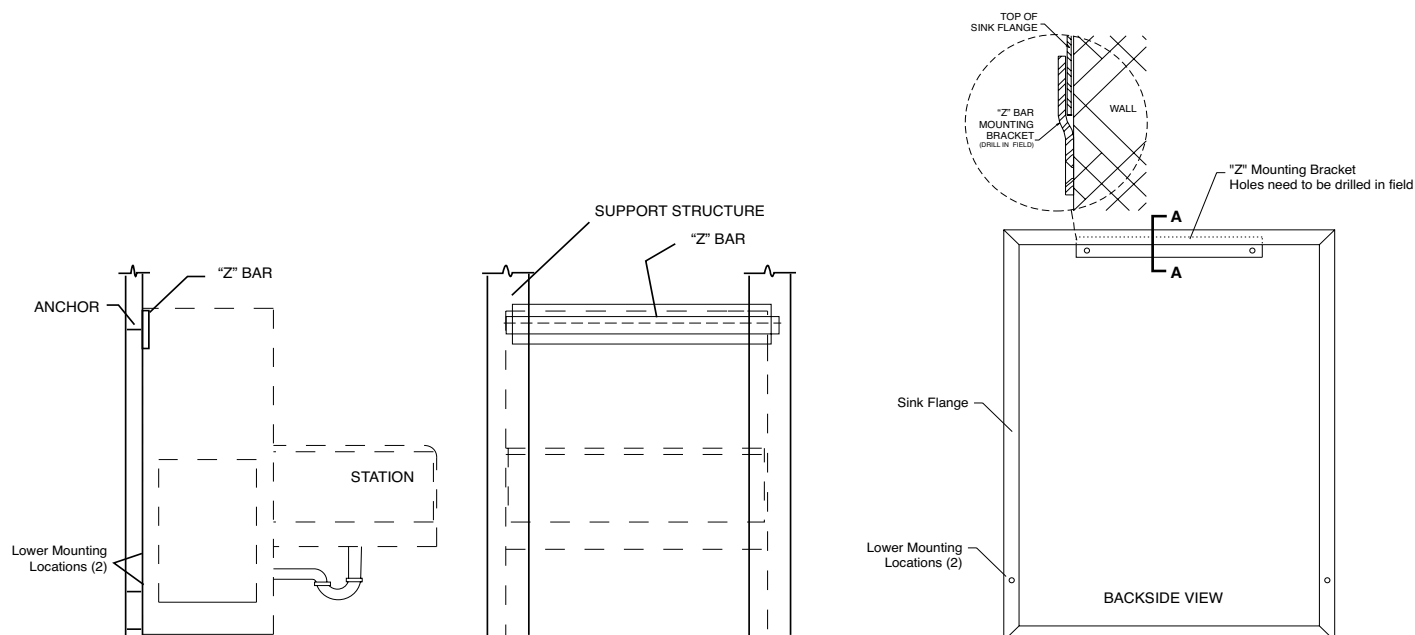
The pallet jack can be used (with a loading dock and maneuverability on and off the transport vehicle) to unload receiving products safely. Maneuvering the pallet jack into position (in the appropriate position within the pallet), lifting the pallet then driving the pallet jack off the truck and safely into the place of installation.

Range of Environmental Condition

Mortech Mfg. Inc. equipment shall be placed in a controlled environment (housing or housed unit) hindering the weathering effects on the installed units. The units will have minimal corrosive and eroding factors that can break down the stability and operation of Mortech's equipment. The impact on the unit by the operator utilizing water or corrosives in the medical procedures can be controlled and responsibility for the cleaning and maintenance placed upon that person. The effects of anthropogenic (man-made) gasses on the environment, such as carbon dioxide (CO₂) that will be omitted from the unit should be minimal.

Due to continuous innovation and product development this installation guide is subject to change without notice.

Please save these instructions for later use.



MOUNTING INSTRUCTIONS

Step 1. Verify all utility rough-ins have been supplied in the proper location and per the project specifications. Drawings from Mortech for utilities is provided with the submittal packet information. Utilities can include: water lines, electrical, etc.

Step 2. (Refer to Figure-A) Verify what type of support structure has been provided for mounting. Use mounting anchors appropriate for support structure.

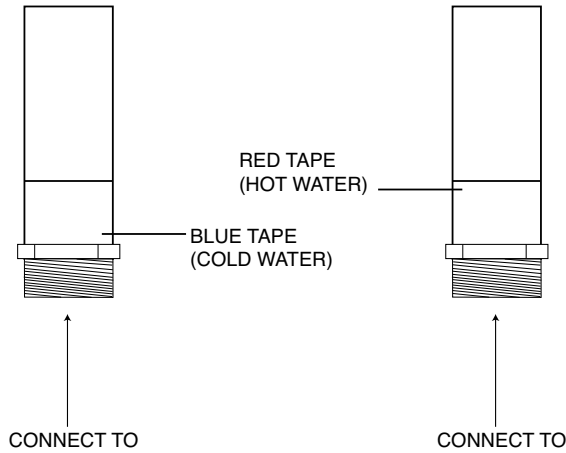
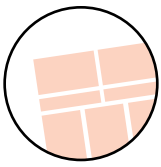
Step 3. Verify mounting height for “z” bar mounting bracket. The “z” bar mounting bracket is supplied with each station from Mortech. Drawings are provided with the submittal packet showing the mounting height. Mount “z” bracket level with appropriate anchor for the backing support provided. The “z” bar is shorter than the overall length of the unit so you must center the “z” bar relative to the center of the station when mounted. Lengths of stations vary per project so you must reference your submittal information for the station length provided.

Step 4. Some stations are large and heavy so it is best to use a mechanical lift to maneuver the station into position. Make sure the unit is resting level on the fork arms. Sometimes a fork extension will be necessary. Raise the unit position and insert the flange of the station into the “z” bar mounting bracket. Lower into position. The unit will fully rest on the “z” bar. Then raise slightly to take the pressure off.

Step 5. While the lift is still holding the station in position, install the lower anchor at each gusset location. You should install at least (2) anchors per gusset. Gussets are located at each end of the station and (1) or (2) in the center of the unit. Use anchors per above recommendations for type of support structure.

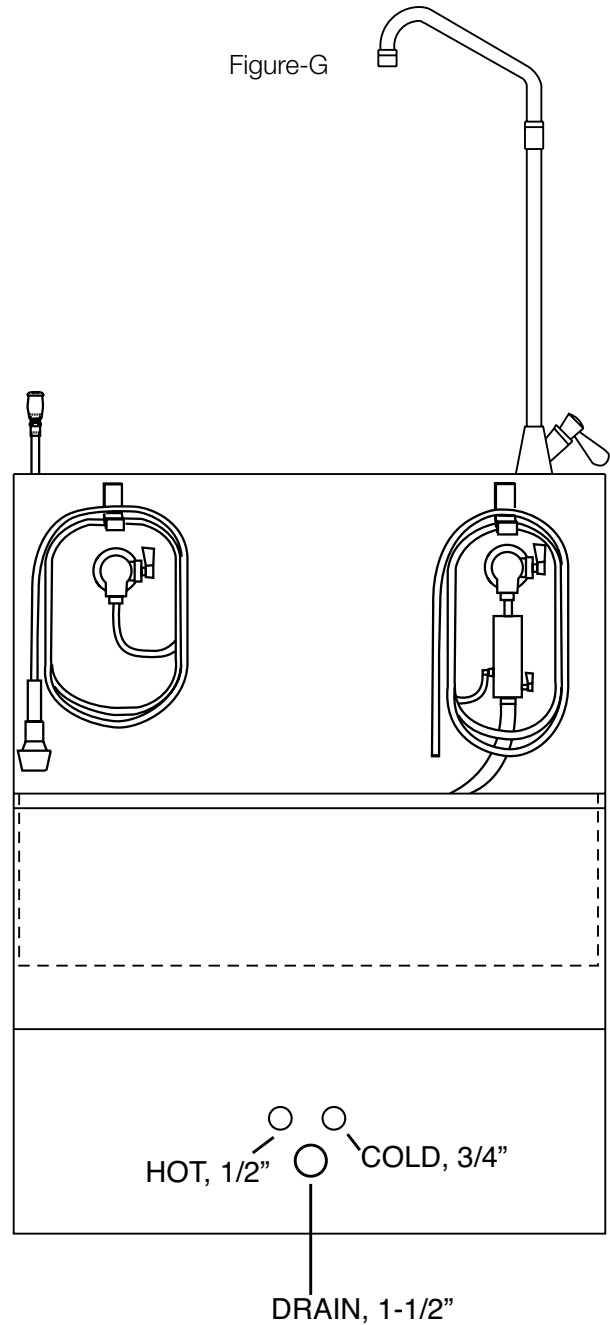
Step 6. The station is now properly anchored to the wall and the lift may be released.





Plumbing outlet marked and ready for hook-up. Located inside unit.

Figure-G1



PLUMBING CONNECTION INSTRUCTIONS

STEP 1: (Refer to Figure-G) Flush out all water lines prior to connection. Debris may be in the lines from construction process. Install shut off valves on each water line. Lines are clearly marked RED for hot and BLUE for cold. (Refer to Figure-G1) The station is provided with a single point connection for hot and cold water. A typical flex line can be used for connection.

Step 2: Connect drain line to sink basin.



ELECTRICAL CONNECTION INSTRUCTIONS

Step 1: (Refer to Figure-I) Connect electrical lines from station to building. Units are provided with watertight conduit lines for connection. All units are internally wired so connecting these lines will bring power to all electrical items on the station.

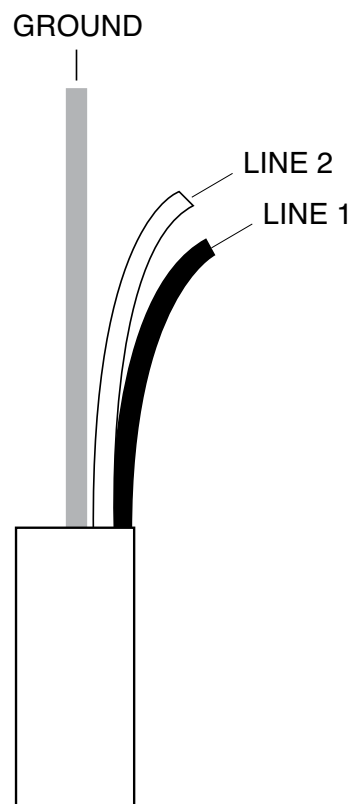
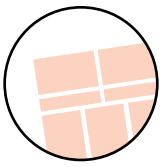
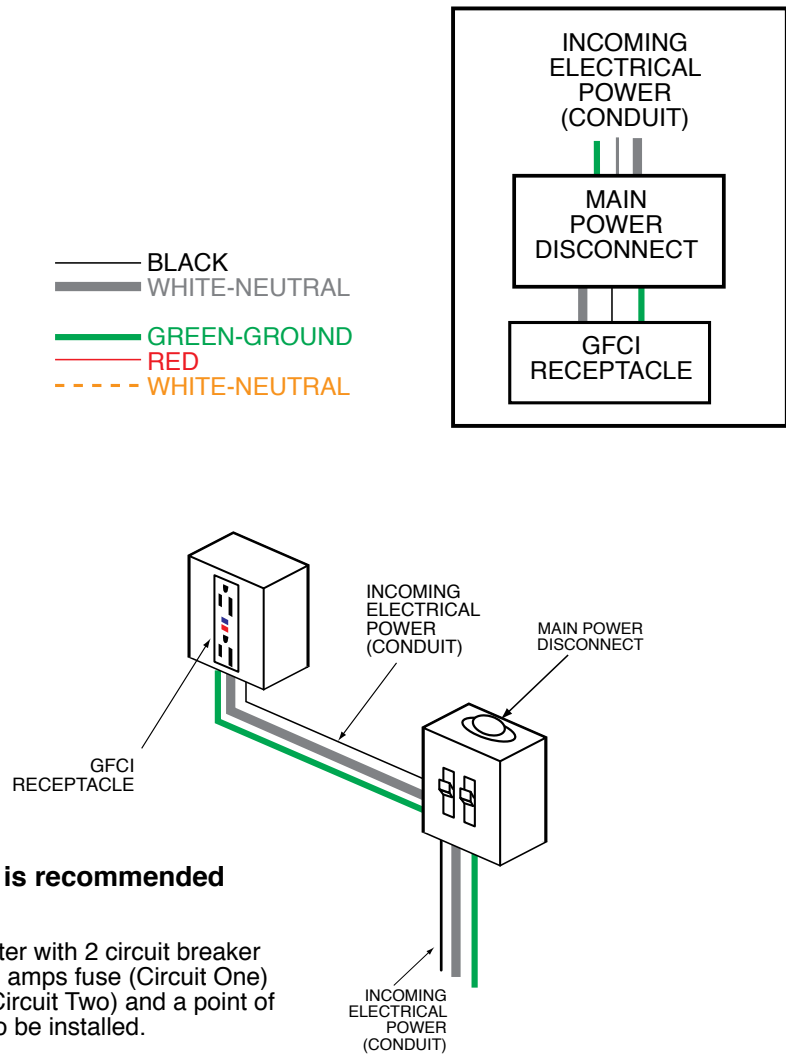


Figure-I





1036-9 ELECTRICAL CONNECTION



General contractor is recommended to provide:

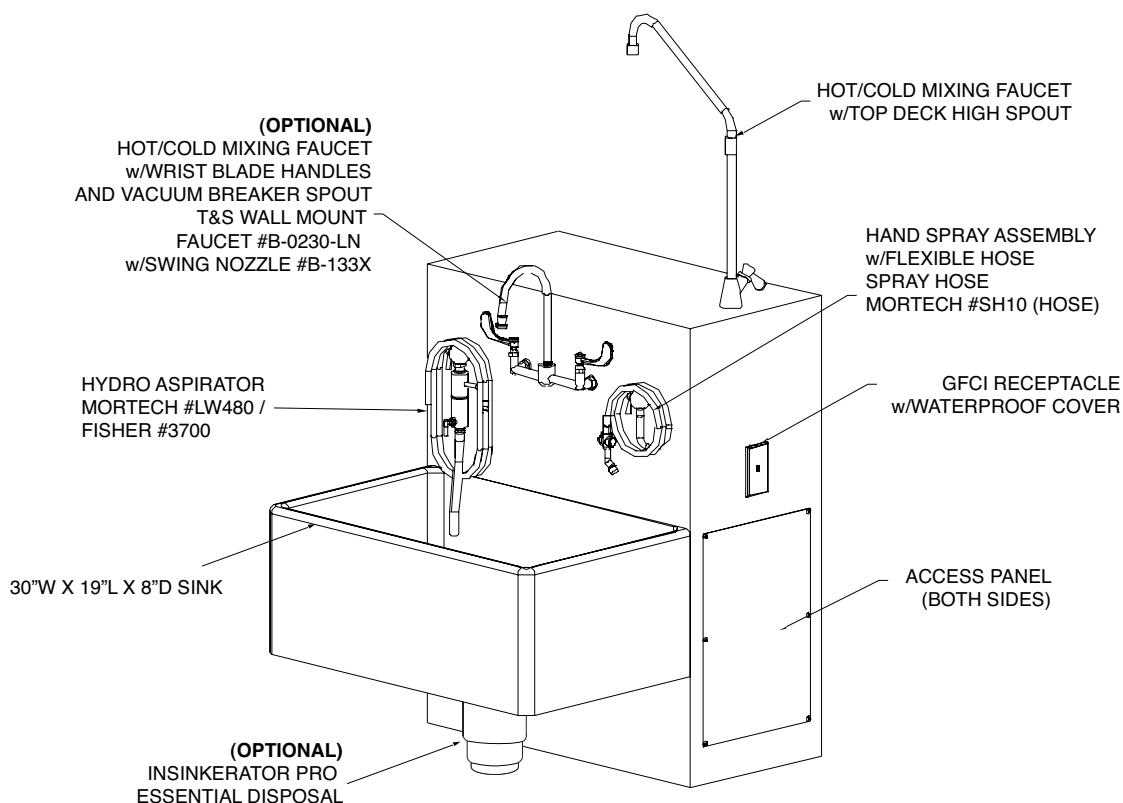
- a. Waterproof load center with 2 circuit breaker disconnect with a 20 amps fuse (Circuit One) and 15 amps fuse (Circuit Two) and a point of contact for the unit to be installed.
- b. A waterproof load center with 2 circuit breaker disconnect with a 20 amps fuse (Circuit One) and 15 amps fuse (Circuit Two) will be attached to the unit itself. Then connected to the point of connection provided on installation site.

Circuit One

- Disposal units Solenoid-.05 amps
- .5 hp, 8.4 amps
- .75 hp, 10.0 amps
- 1 hp, 11.6 amps
- 2 hp, 17.4 amps

Circuit Two

- Luminaire- .31 amps



Optional Accessories:

- Splash Guard Cover for Sink Basin
- Waste Disposal Unit
- Eyewash Assembly
- Perimeter Sink Rinse Assembly
- Hot and Cold Water Mixing Faucet
- Exhaust vent to connect to building ventilation system

TROUBLESHOOTING

Mixing faucet leaking

- Contact plumber to diagnose problem
- Replace faucet gasket seals

Sink not draining

- Check for debris in sink area
- Contact plumber to diagnose and clear drain if problem persist

Rust developing

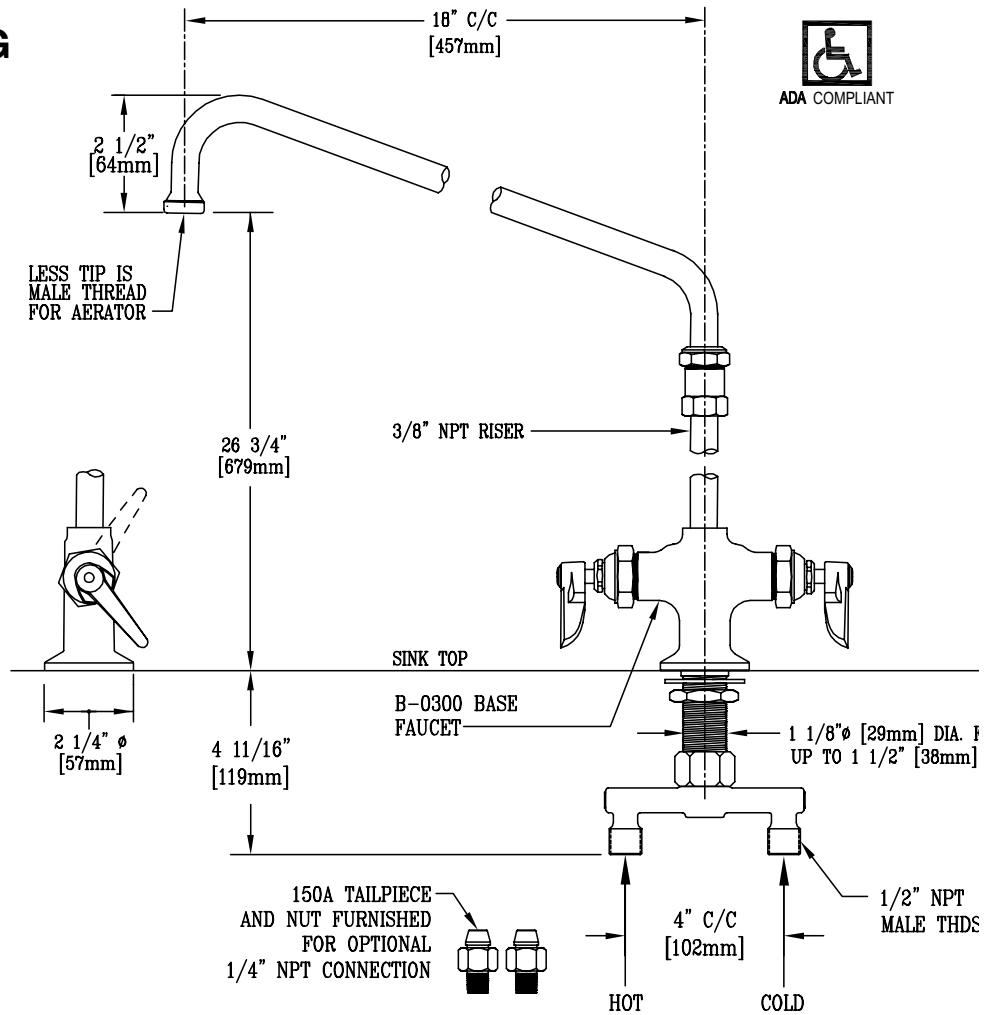
- Check for standing water in rust area
remove standing water
- Check for non stainless metals left on rust area
- Follow rust removal instructions

Aspirator not functioning

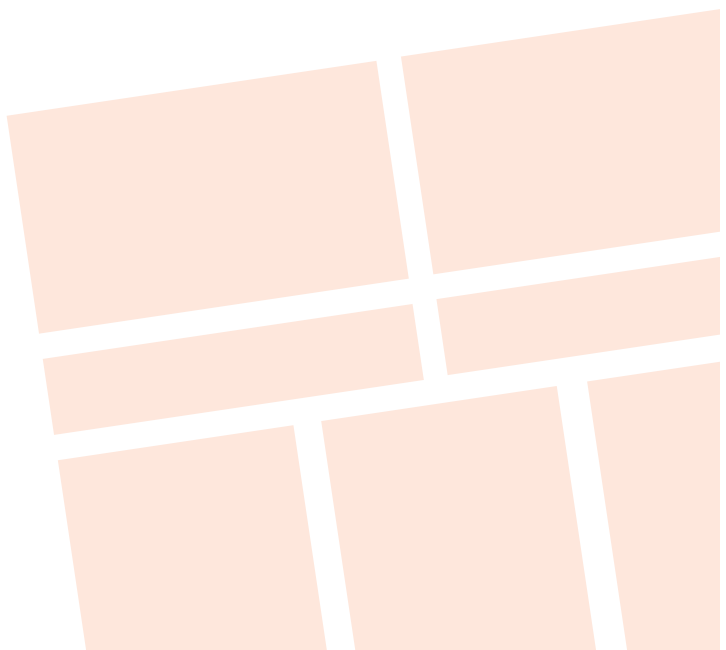
- Check for adequate water pressure min. -60 lbs. psi
- Check for proper water flow through the unit
4 gallons per minute
- If above two are adequate, disassemble unit and check for debris causing a clog in the unit.
- Call mortech customer service if problem persists



DOUBLE PANTRY MIXING FAUCET w/18 INCH SWING NOZZLE T&S MODEL #B-0270



T&S MODEL #B-0270

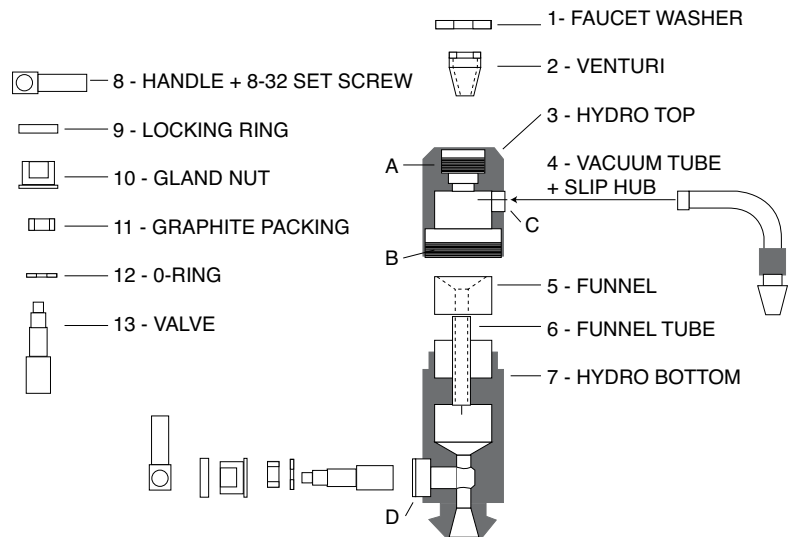


HYDRO-ASPIRATOR

Mandatory operation requirements

- Minimum 1/2" supply line
- Minimum 60 lbs of water pressure
- Minimum 4 gallons per minute of water flow through unit

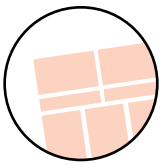
Vacuum up to 26 inches can be maintained at these pressures. Trocar or aspiration line is attached to the aspiration tube. Diverter handle at lower end must be parallel to length of body of aspirator. To back flush the trocar/aspiration line, turn the diverter handle perpendicular to the length of the aspirator. Tubing can be added to the outlet bottom of the aspirator to direct the flow of water into the sink drain.



Reorder No. LW480

Control Valve
 Model #CP45





Vacuum Breaker

Size: 3/4" (20mm) thread

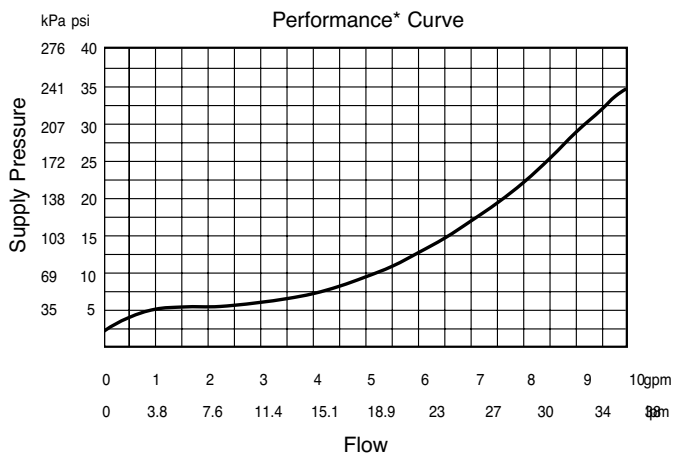
Vacuum Breaker is a line of unique vacuum breakers specially made to permit the attachment of portable hoses to hose thread faucets. Designed to prevent the flow of contaminated water back into the potable water supply, these devices require no plumbing changes, and screw directly onto a sill cock.

Features

- Stainless steel working parts for longevity
- Durable rubber diaphragm and disc for consistent positive seating

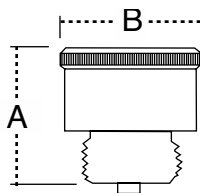
Use only with approved hose bibbs or hose fittings having four or more full American National Hose (NH) threads.

Capacity



*Performance as established by an independent testing laboratory.

Dimensions – Weights



MODE	SIZE (DN)		DIMENSION				WEIGHT	
	In.	mm	A		B		oz.	gm.
8B	3/4HT	20	1/2	38	1 3/8	35	4.0	113.4

INSTALLATION

Thread Vacuum Breaker onto Aspirator, tighten. Vacuum Breaker is secured by tightening the set screw.

TO DRAIN

Vacuum Breaker can be drained to prevent freezing by removing and pulling down gently on the stem.

IMPORTANT

Do not use with continuous pressure or use where discharge of water could cause damage.



FISHER SPRAY HOSE ASSEMBLY

SINGLE WALL CONTROL VALVE

Model #2700

SPRAY HEAD

Model #10820

SPRAY HANDLE

Model #2913

SPRAY HOSE

Mortech Model #SH10

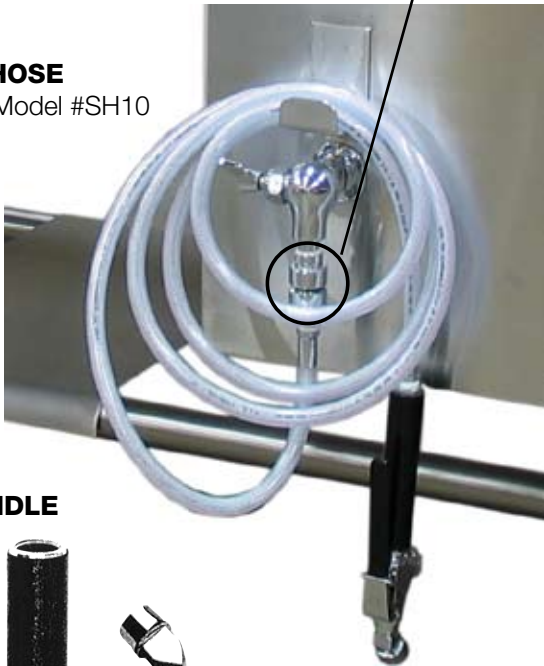
WATTS BACKFLOW PREVENTER

N-9

BACKFLOW PREVENTER N-9

SPRAY HOSE

Mortech Model #SH10



SPRAY HANDLE

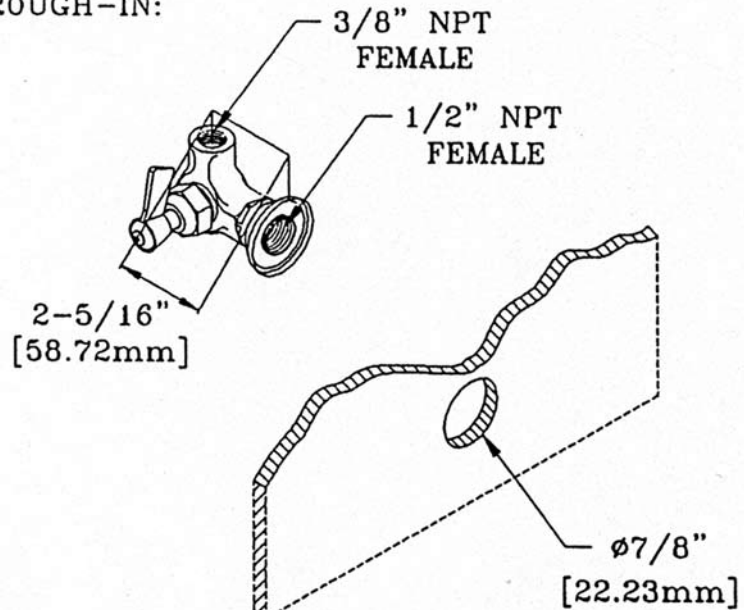
Model #2913



SPRAY HEAD

Model #10820

ROUGH-IN:



FISHER SINGLE WALL CONTROL VALVE

MODEL # 2700

Feature:

- Single wall
- Stem - right hand
- Swiveling seat disk
- Hot & cold index buttons
- Stainless steel seats
- Stainless steel seat screws
- Stainless steel handle screws

Recommended Settings

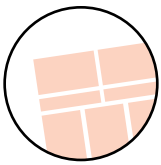
- 110°F at 80 psi
- System limits
- Temp: 40°F min. to 140°F max.
 - Pressure 200 psi max. static
- Shipping weight
- 11.5 lbs

Fisher Manufacturing Co.

1900 South "O" Street
Tulare, California 93274
800-421-6162
800-832-8236 FAX

Mailing Address:
P.O.Box 60
Tulare, California 93275





Watts Model N9 Backflow Preventers

ATTENTION INSTALLER

Before installing, flush out pipe lines to remove scale and other foreign matter. The valves can be installed horizontally or vertically. Install the valve in the line with the arrow on valve body pointing in the direction of flow.

Application

The Model N9 series are recommended for continuous pressure type installations. Potable water must be protected from backflow of hazard substances used in equipment container, sinks and set tubs. In the event of negative supply pressure such contaminated fluids will not backflow to the supply source by backsiphonage. For clarification of hazard substances consult Local Plumbing Authority or Health Department.

Maintenance

Annual inspection is required, since cleaning and checking of all water system safety and control valves assures maximum life and proper product function.

Temperature and Pressure

Maximum Pressure 150 psi (10.3 bar).

Maximum Temperature 140°F (60°C).

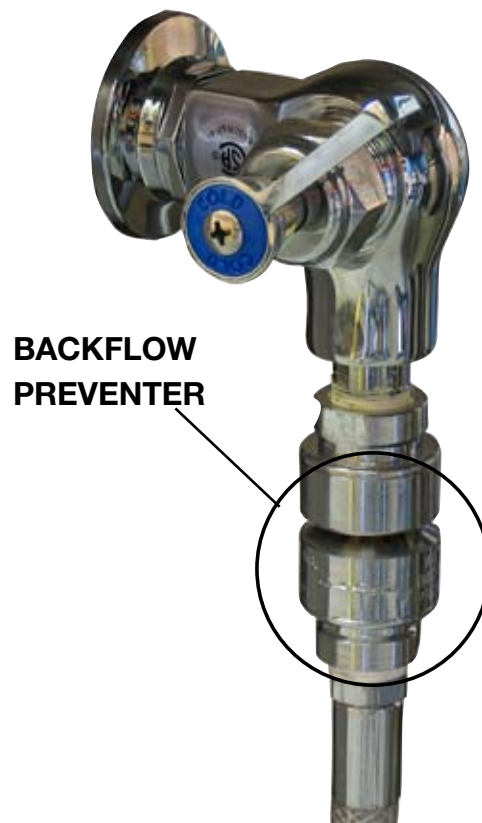
Annual inspection of all water system safety and control valves is required and necessary. Regular inspection, testing and cleaning assures maximum life and proper product function. Teflon® is a registered trademark of the E.I. Dupont de Nemours & Company.

Limited Warranty

Watts Regulator Co. (the "Company") warrants each product to be free from defects in material and workmanship under normal usage for a period of one year from the date of original shipment. In the event of such defects within the warranty period, the Company will, at its option, replace or recondition the product without charge.

THE WARRANTY SET FORTH HEREIN IS GIVEN EXPRESSLY AND IS THE ONLY WARRANTY GIVEN BY THE COMPANY WITH RESPECT TO THE PRODUCT. THE COMPANY MAKES NO OTHER WARRANTIES, EXPRESS OR IMPLIED. THE COMPANY HEREBY SPECIFICALLY DISCLAIMS ALL OTHER WARRANTIES, EXPRESS OR IMPLIED, INCLUDING BUT NOT LIMITED TO THE IMPLIED WARRANTIES OF MERCHANTABILITY AND FITNESS FOR A PARTICULAR PURPOSE.

The remedy described in the first paragraph of this warranty shall constitute the sole and exclusive remedy for breach of warranty, and the Company shall not be responsible for any incidental, special or consequential damages, including without limitation, lost profits or the cost of repairing or replacing other property which is damaged if this product does not work properly, other costs resulting from labor charges, delays, vandalism, negligence, fouling caused by foreign material, damage from adverse water conditions, chemical, or any other circumstances over which the Company has no control. This warranty shall be invalidated by any abuse, misuse, misapplication, improper installation or improper maintenance or alteration of the product. Some States do not allow limitations on how long an implied warranty lasts, and some States do not allow the exclusion or limitation of incidental or consequential damages. Therefore the above limitations may not apply to you. This Limited Warranty gives you specific legal rights, and you may have other rights that vary from State to State. You should consult applicable state laws to determine your rights. SO FAR AS IS CONSISTENT WITH APPLICABLE STATE LAW, ANY IMPLIED WARRANTIES THAT MAY NOT BE DISCLAIMED, INCLUDING THE IMPLIED WARRANTIES OF MERCHANTABILITY AND FITNESS FOR A PARTICULAR PURPOSE, ARE LIMITED IN DURATION TO ONE YEAR FROM THE DATE OF ORIGINAL SHIPMENT.



MAINTENANCE INSTRUCTIONS**MAINTENANCE SCHEDULE**

The unit requires regular maintenance and follow the manufactures directions.

DISINFECTING AND CLEANING

Clean all surfaces of the stainless steel with a hard surface disinfectant/cleaner such as Sheila Shine® or SaniZene®. Follow instructions on container.

DISINFECTING AND CLEANING COMPONENTS AND ACCESSORIES

Hand wash with disinfecting soap and warm water. Rinse well with clear water and dry with a towel. (Clean on a regular basis to prolong work life).

WARNING

Improper maintenance can cause injury. Maintain only as prescribed in this manual.

Overall, it is very simple to maintain. If you use for its intended purpose, it will provide many years of reliable service.

CARE OF STAINLESS STEEL

Stainless steel products have a directional #4 brushed finish. This finish is produced using a very fine abrasive cloth. Dragging heavy equipment across the stainless steel surfaces will cause noticeable scratching. Pitting/corrosion can occur when carbon steel products are allowed to remain in contact with the stainless steel in the presence of moisture. (Examples- Steel Wool pads left in the bottom of the sink). Stainless steel can be damaged by exposure to acids.

TYPES OF SURFACE CONTAMINANTS

Dirt - Consist of accumulated dust and a variety of contaminates. Warm water with or without a gentle detergent is sufficient. Next in order are mild non-abrasive powders such as typical household cleaners. These can be used with warm water, bristle brushes, sponges, or cleaning cloths. (Do not use carbon steel brushes or steel wool they may leave particles embedded on the surface which can lead to RUSTING.) For more aggressive cleaning, a small amount of vinegar can be added to the scouring powder. When water contains mineral solids, which leave water spots, it is advisable to wipe the surface completely with dry towels.

Fingerprints and Stains - Fingerprints and mild stains resulting from normal use are the most common surface contaminates. This affect the appearance and seldom have an effect on corrosion resistance. They can be removed with a glass cleaner or by gentle rubbing with a paste of soda ash (sodium carbonate) and water applied with a soft rag. Followed by a thorough warm water rinse and towel dry.

Shop Oil and Grease - These soils may be corrosive and may not allow the surface to maintain passivity, and so removal is a necessity. Soap or detergent and water may be used or a combination of detergent and water plus a solvent.

TYPES OF CLEANERS AND METHODS**General Precautions**

Avoid using abrasive cleaners unless absolutely necessary. A "soft abrasive," such as pumice, should be used. Many cleaners contain corrosive ingredients, rinse with clean water.

Clean Water and Wipe - A soft cloth and clean warm water should always be the first choice for mild stains, loose dirt and soils. A final rinse with clean water and a dry wipe will eliminate the possibility of water stains.

Solvent Cleaning - Organic solvents can be used to remove fresh fingerprints, oils and greases that have not had time to oxidize or decompose. The preferred solvent is one that does not contain chlorine, such as acetone, methyl alcohol, and mineral spirits.

EFFECTIVE CLEANING METHODS

Commercial Cleaners - Many commercial cleaners compounded from phosphates, synthetic detergents, and alkalis are available for the cleaning of severely soiled or stained stainless surfaces. When used with a variety of cleaning methods, these cleaners can safely provide effective cleaning.

SCRATCH REPAIR

Surface scratches can be repaired using the following technique. Depending on the severity of the scratch, it may be possible to completely remove it. Sand the scratch using 120 grit emery cloth or paper and firm pressure. Always sand in the direction of the grain. Avoid the natural tendency to sand in an arc, instead sand in a perfectly straight line. Sand until the scratch is gone.

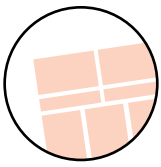
Polish using 3M Scotch Brite pads - Very Fine Grade. Use the same motions as with sanding. Polish until the original finish is restored. Wash and wipe the surface completely with dry towels.

RUST REMOVAL

Rust can be repaired using the following technique. Sand the scratch using 120 grit emery cloth or paper and firm pressure. Always sand in the direction of the grain. Avoid the natural tendency to sand in an arc, instead sand in a perfectly straight line. Sand until the rust is gone.

Polish using 3M Scotch Brite pads - Very Fine Grade. Use the same motions as with sanding. Polish until the original finish is restored. Wash and wipe the surface completely with dry towels.





WARRANTY

Mortech Manufacturing warrants all fabrications to be free of defects due to its own workmanship and materials.

Repair and/or replacement of materials furnished that may develop such defects, will be warranted for a period of one year from the date of shipment.

Items not manufactured by Mortech Manufacturing will receive the manufacturer's warranty.

PARTS AND SERVICE

Customer relations and product support are important aspects of Mortech Manufacturing.

For assistance with this or any of our fine products please contact us below:

Mortech Manufacturing Company
411 North Aerojet Avenue
Azusa, CA 91702
TEL (626) 334-1471
FAX (626) 334-1704
www.mortechmfg.com
info@mortechmfg.com

© COPYRIGHT MORTECH MANUFACTURING INC., ALL RIGHTS RESERVED.

IMPORTANT

BEFORE INSTALLATION AND OPERATION OF THE UNIT, CHECK ANY ENCLOSURE PANELS AND PLUMBING FIXTURES THAT MIGHT HAVE LOOSENED DURING SHIPPING.

DISCLAIMER

This manual contains general instructions for the use, operation, and care of this product. The instructions are not all inclusive. Safe and proper use of this product is solely at the discretion of the user. Safety information is included as a service to the user. All other safety measures taken by the user should be within and under consideration of applicable regulations. It is recommended that training on the proper use of this product be provided before using this product in and actual situation.

Retain this manual for future reference. Include it with the product in the event of transfer to new users. Additional free copies are available upon request from Customer Relations.

PROPRIETARY NOTICE

The information in this manual is the property of Mortech Manufacturing. Mortech Manufacturing reserves all patent rights, proprietary design rights, manufacturing rights, reproductions rights, and sales use rights thereto, and to any article disclosed therein except to the extent those rights are expressly granted to others or where not applicable to vendor proprietary parts.

