



## **M604-H/C HYDRAULIC/HAND CRANK STRAP TRAY LIFT ASSEMBLY**

### **CAUTION**

- Inspect unit and all components for any loosening that may have occurred during shipping •

### **CAUTION**

- Weight capacity for the T3626-HS is 300 Lbs. Do Not Exceed Weight Capacity-Larger weight capacity trays are available upon request •

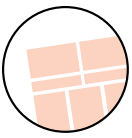
### **ATTENTION**

- Review entire manual before starting assembly

### **ATTENTION**

- All images and Drawing in this manual may not represent your model. Refer to your particular project for exact specifications





## Safety information

## **M604-H/C Hydraulic/Hand Crank Strap Tray Lift Assembly**

**It is important that the information provided in this manual is observed. These instructions should be read carefully and observed fully before installation and initial operation.**

### **WARNING**

It is crucial that any work performed on Mortech Mfg. Inc. manufactured items are carried out exclusively by skilled professionals who have the respective training. Improper use, maintenance, parts and service, or modification to the equipment may cause injury and/or damage. Use and maintain the equipment only for the purpose described in this manual. Use only prescribed approved parts and service. Use the equipment only as designed by Mortech mfg. Inc.

### **BLOODBORNE DISEASE NOTICE**

To reduce the risk of exposure to bloodborne diseases such as HIV-1 and hepatitis when using the equipment, follow the disinfecting and cleaning instructions in this manual.

### **OPERATING SKILLS AND TRAINING SKILLS**

Operators using the equipment needs

- ☐ A working knowledge of necessary procedures.
- ☐ The ability to carry out necessary service procedures.
- ☐ A complete understanding of the procedures described in this manual.

### **TRAINING**

- ☐ Be trained on the use of the equipment.
- ☐ Read the manual
- ☐ Practice with the equipment before using it in regular service.
- ☐ Be tested on their understanding of the equipment operation.
- ☐ Record their training.

### **BEFORE USING THE UNIT**

Personnel working with this unit needs to read this manual. Assemble of the unit following instructions, and perform any pre-service checks to confirm the units operates properly.

### **INSPECTING THE UNIT BEFORE USE**

Please take time to inspect all shipment prior to signing delivery ticket. If concealed damage is discovered, save the carton and immediately contact carrier agent to initiate claim of damage.

### **BE SURE TO CHECK**

- Are all components present?
- Do the moving parts operate smoothly?
- Is unit draining properly?
- Are all nuts, bolts, and pins secured in place?  
If unit has an issue contact customer relations.

### **INSTRUCTION FOR HANDLING**

Adhere to state and/or local certification and regulations for operation of forklift and/or pallet jack. Cargo is extremely heavy, be sure to have the necessary manpower as well as equipment to successfully unload shipment from truck. We recommend a forklift and/or pallet jack with the capacity to lift up to 2000 lbs. to remove cargo from truck.

The forklift can be used to unload receiving products safely by placing the load on the floor, maneuvering the forklift into position, tilting the mast forward to vertical position so the load will be level, lowering the load, and smoothly backing away without dragging. Once cargo is unloaded, positioning unit for installation will once again require a forklift. Read all manual and note on installation of the unit before installing.

The pallet jack can be used (with a loading dock and maneuverability on and off the transport vehicle) to unload receiving products safely. Maneuvering the pallet jack into position (in the appropriate position within the pallet), lifting the pallet then driving the pallet jack off the truck and safely into the place of installation.

### **Range of Environmental Condition**

Mortech Mfg. Inc. equipment shall be placed in a controlled environment (housing or housed unit) hindering the weathering effects on the installed units. The units will have minimal corrosive and eroding factors that can break down the stability and operation of Mortech's equipment. The impact on the unit by the operator utilizing water or corrosives in the medical procedures can be controlled and responsibility for the cleaning and maintenance placed upon that person. The effects of anthropogenic (man-made) gasses on the environment, such as carbon-dioxide (CO<sub>2</sub>) that will be omitted from the unit should be minimal.

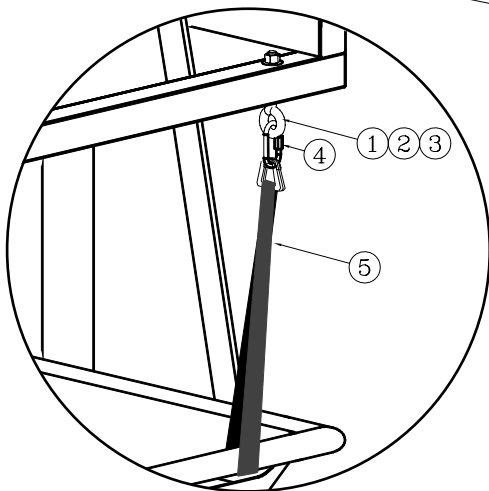
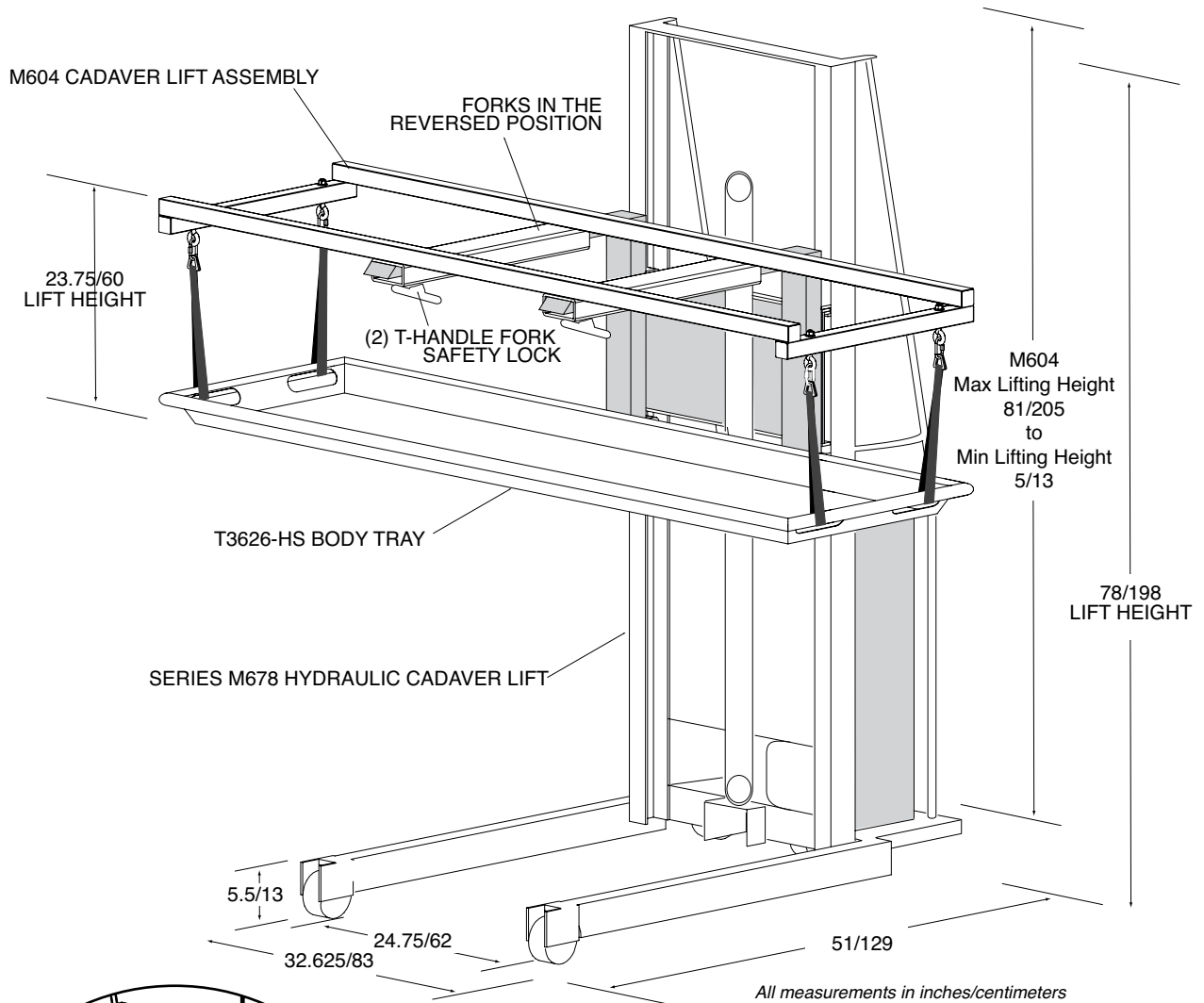
**Due to continuous innovation and product development this installation guide is subject to change without notice.**

**Please save these instructions for later use.**

**M604-H/C Hydraulic/Hand Crank**  
**Strap Tray Lift Assembly**

Parts listing

**M604-H HYDRAULIC CADAVER LIFT ASSEMBLY**  
 (SHOWN WITH SERIES M678 HYDRAULIC CADAVER LIFT)

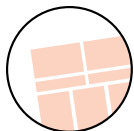


1. Ø-3/8" NYLOCK NUT (4 REQ.)
2. Ø-3/8" WASHER (8 REQ.)
3. Ø-3/8" X 4"L EYE BOLT (4 REQ.)
4. Ø-3/8" X 3-1/4" QUICK LINK (4 REQ.)
5. LIFT STRAP (4 REQ.)
6. T-HANDLE FORK SAFETY LOCK (2 REQ.)

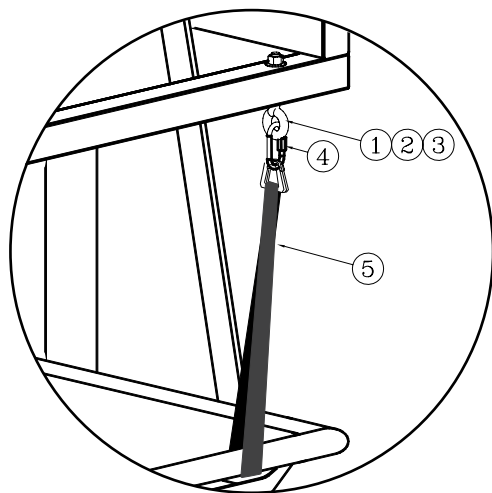
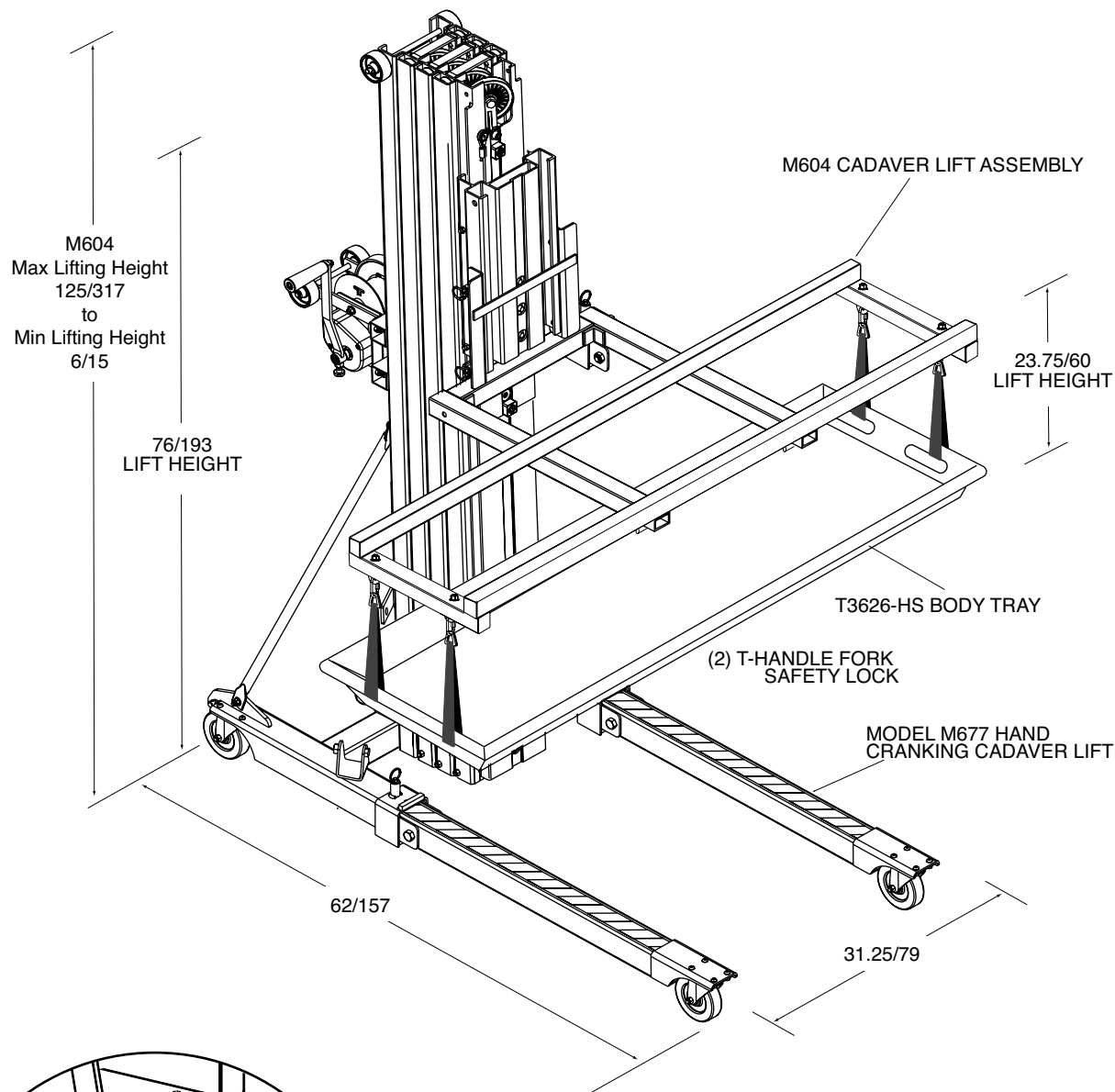
**CAUTION**

• Weight capacity for the T3626-HS is 300 Lbs. Do Not Exceed Weight Capacity-Larger weight capacity trays are available upon request •





**M604-C HAND CRANK CADAVER LIFT ASSEMBLY**  
(SHOWN WITH SERIES M677 HAND CRANKING CADAVER LIFT)



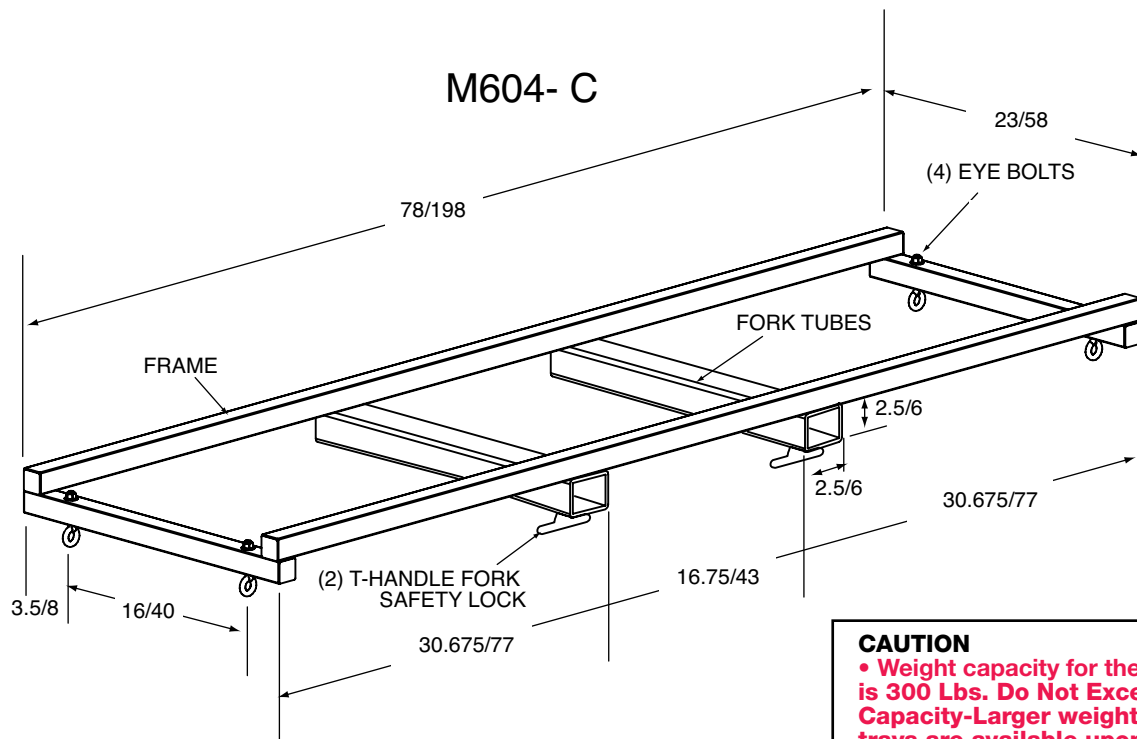
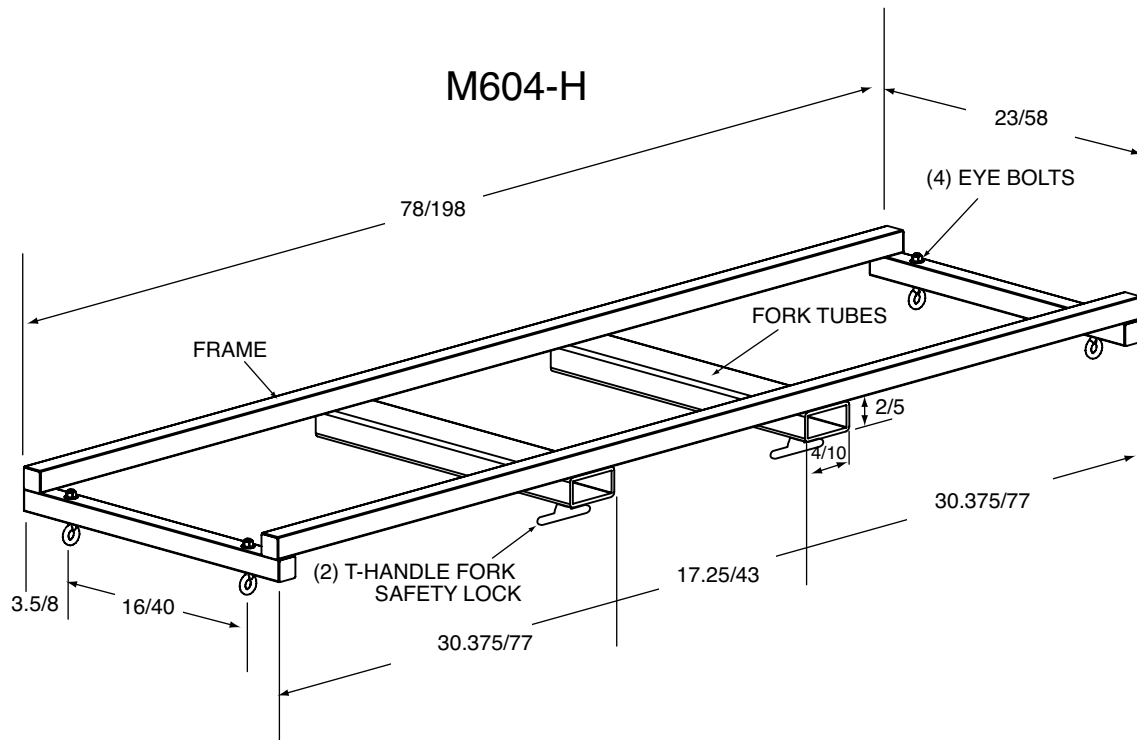
1. Ø-3/8" NYLOCK NUT (4 REQ.)
2. Ø-3/8" WASHER (8 REQ.)
3. Ø-3/8" X 4"L EYE BOLT (4 REQ.)
4. Ø-3/8" X 3-1/4" QUICK LINK (4 REQ.)
5. LIFT STRAP (4 REQ.)
6. T-HANDLE FORK SAFETY LOCK (2 REQ.)

**CAUTION**

• Weight capacity for the T3626-HS is 300 Lbs. Do Not Exceed Weight Capacity-Larger weight capacity trays are available upon request •

**M604-H/C Hydraulic/Hand Crank**  
**Strap Tray Lift Assembly**

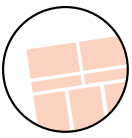
Parts listing



**CAUTION**

• Weight capacity for the T3626-HS is 300 Lbs. Do Not Exceed Weight Capacity-Larger weight capacity trays are available upon request •





## ***M604-H/C Hydraulic/Hand Crank Strap Tray Lift Assembly***

**M677 Hand Crank Cadaver Lift**



**Series M678 Hydraulic Cadaver Lift**



**Model M604 Cadaver Lift Assembly**

### **Standard Design Features**

- All stainless steel construction
- 11 gauge tubing for heavy duty use
- (4) Sturdy strap supports
- Straps attach easily to T3626-HS
- Fits our cadaver lifts shown

### **CAUTION**

- **Weight capacity for the T3626-HS is 300 Lbs. Do Not Exceed Weight Capacity-Larger weight capacity trays are available upon request •**



## **M604-H/C Hydraulic/Hand Crank Strap Tray Lift Assembly**

Parts listing

### **CAUTION**

Use adequate support when removing the tray to prevent personal injury



To remove the tray, twist the locking mechanism on the quick link and slide the ring at the end of the lift straps.





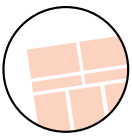
MARCH 2012 MFGISO Doc. #OMM604-H/C (Rev. D)



## ***M604-H/C Hydraulic/Hand Crank Strap Tray Lift Assembly***

## Training record

[illegible]



## Warranty

## **M604-H/C Hydraulic/Hand Crank Strap Tray Lift Assembly**

### WARRANTY

Mortech Manufacturing warrants all fabrications to be free of defects due to its own workmanship and materials.

Repair and/or replacement of materials furnished that may develop such defects, will be warranted for a period of one year from the date of shipment.

Items not manufactured by Mortech Manufacturing will receive the manufacturer's warranty.

### PARTS AND SERVICE

Customer relations and product support are important aspects of Mortech Manufacturing. For assistance with this or any of our fine products please contact us below:

Mortech Manufacturing Company  
411 North Aerojet Avenue  
Azusa, CA 91702  
TEL (626) 334-1471  
FAX (626) 334-1704  
www.mortechmfg.com  
info@mortechmfg.com

© COPYRIGHT MORTECH MANUFACTURING INC., ALL RIGHTS RESERVED.

### **IMPORTANT**

**BEFORE INSTALLATION AND OPERATION OF THE UNIT, CHECK ANY ENCLOSURE PANELS AND PLUMBING FIXTURES THAT MIGHT HAVE LOOSENED DURING SHIPPING.**

### **ATTENTION**

All images and Drawing in this manual may not represent your model. Refer to your particular project for exact specifications

### DISCLAIMER

This manual contains general instructions for the use, operation, and care of this product. The instructions are not all inclusive. Safe and proper use of this product is solely at the discretion of the user. Safety information is included as a service to the user. All other safety measures taken by the user should be within and under consideration of applicable regulations. It is recommended that training on the proper use of this product be provided before using this product in and actual situation.

Retain this manual for future reference. Include it with the product in the event of transfer to new users. Additional free copies are available upon request from Customer Relations.

Mortech Mfg. Inc. has made every effort to ensure that this Manual is accurate; Mortech Mfg. Inc. abdicate liability for any inaccuracies or omissions that may have occurred.

Information in this Manual is subject to change without notice and does not represent a commitment on the part of Mortech Mfg. Inc. Mortech Mfg. Inc. assumes no responsibility for any inaccuracies that may be contained in this Manual. Mortech Mfg. Inc. makes no commitment to update or keep current the information in this Manual, and reserves the right to make improvements to this Manual and/or to the products described in this Manual, at any time without notice.

If you find information in this manual that is incorrect, misleading, or incomplete, we would appreciate your comments and suggestions.

### PROPRIETARY NOTICE

The information in this manual is the property of Mortech Manufacturing. Mortech Manufacturing reserves all patent rights, proprietary design rights, manufacturing rights, reproductions rights, and sales use rights thereto, and to any article disclosed therein except to the extent those rights are expressly granted to others or where not applicable to vendor proprietary parts.

