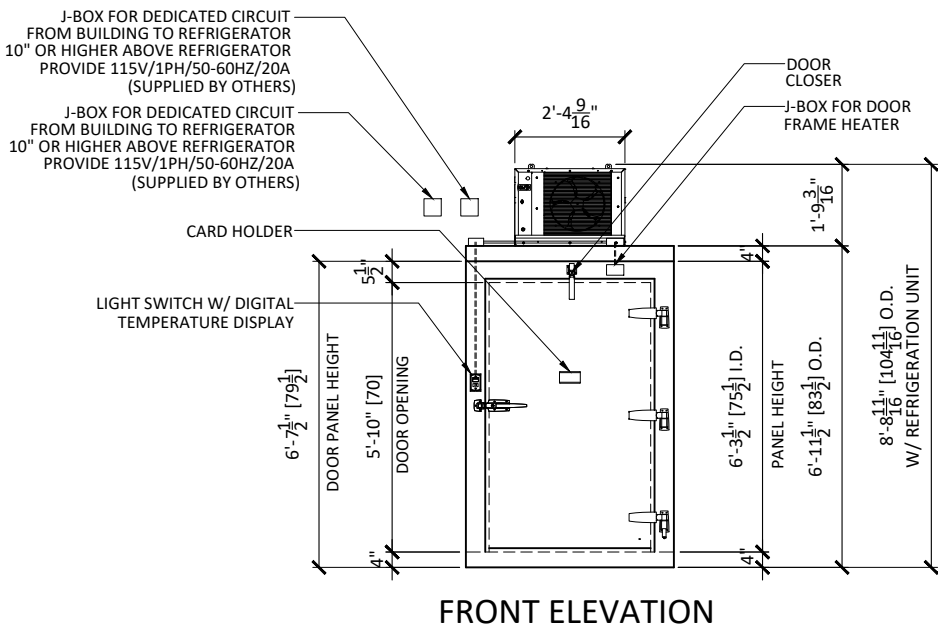
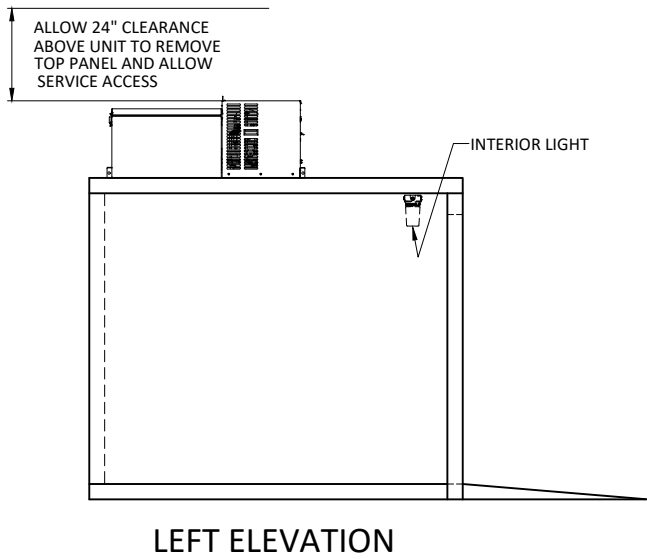


NOTES: UNLESS OTHERWISE SPECIFIED

-

5. REFRIGERATOR SHIPS ASSEMBLED W/ REFRIGERATION UNIT REMOVED



CONSTRUCTION:

WALLS: 4" THICK HIGH DENSITY FOAM RAILS
POLYURETHANE, FOAMED-IN-PLACE

CEILING: 4" THICK HIGH DENSITY FOAM RAILS
POLYURETHANE, FOAMED-IN-PLACE

FLOOR: 4" THICK HIGH DENSITY FOAM RAILS
POLYURETHANE, FOAMED-IN-PLACE
W/ ONE(1) LAYER 3/4" CDX PLYWOOD ON TOP

FINISH:

WALLS: .040" STUCCO EMBOSSED ALUMINUM INTERIOR
.040" STUCCO EMBOSSED ALUMINUM EXTERIOR

CEILING: .040" STUCCO EMBOSSED ALUMINUM INTERIOR
.040" STUCCO EMBOSSED ALUMINUM EXTERIOR

FLOOR: .032" SMOOTH ALUMINUM INTERIOR
.040" STUCCO EMBOSSED ALUMINUM EXTERIOR


RAMP: 0.0625" ALUMINUM DIAMOND PLATE

DOOR: (1) 42" X 70" OVERLAP, INFIT, COOLER DOOR W/ DOOR FRAME HEATER
(1) COMPONENT HARDWARE LATCH W/ INSIDE RELEASE (PUSH ROD)
#W19-1500-C
(2) COMPONENT HARDWARE CAM-RISE HINGE, #W58-1137
(1) COMPONENT HARDWARE CAM-RISE HINGE W/ SPRING ASSIST, #W58-3137

ACCESSORIES: (1) COMPONENT HARDWARE LED VAPOR PROOF LIGHT FIXTURE
MODEL #VXS-LED10PC (SURFACE MOUNTED)
(1) KASON LIGHT SWITCH W/ DIGITAL TEMPERATURE DISPLAY, MODEL #1967-3
(1) EXTERIOR RAMP (48" DEEP)
EXTERIOR COVE BASE
SILICONE, TRIM & SCREWS

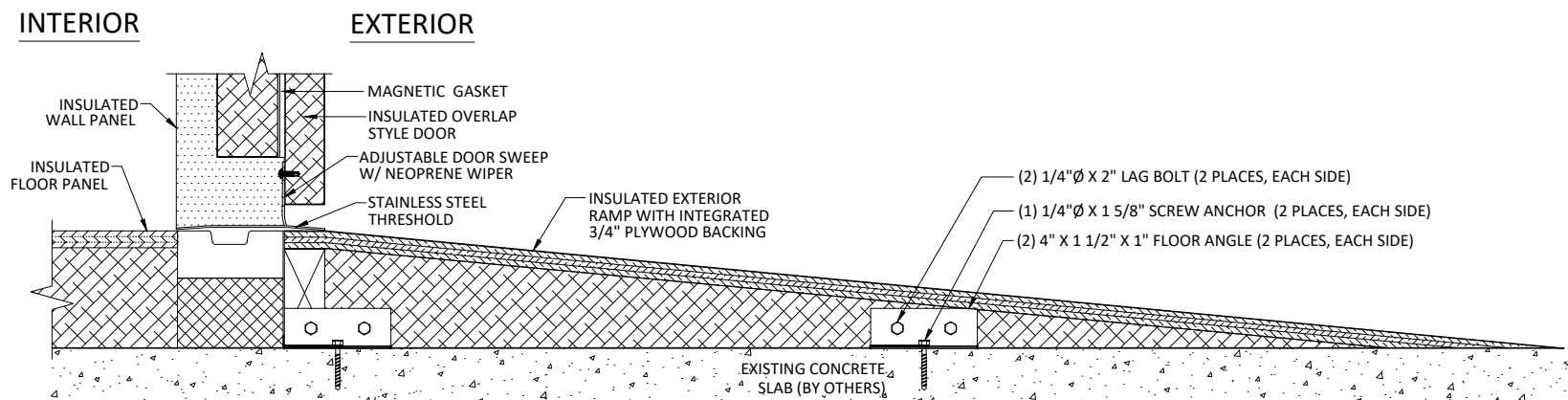
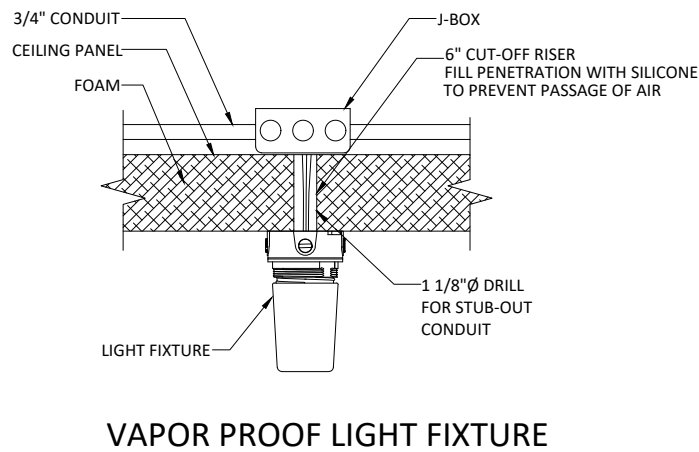
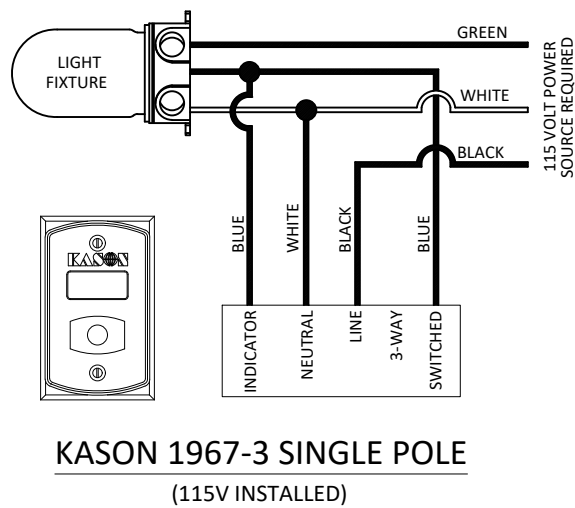
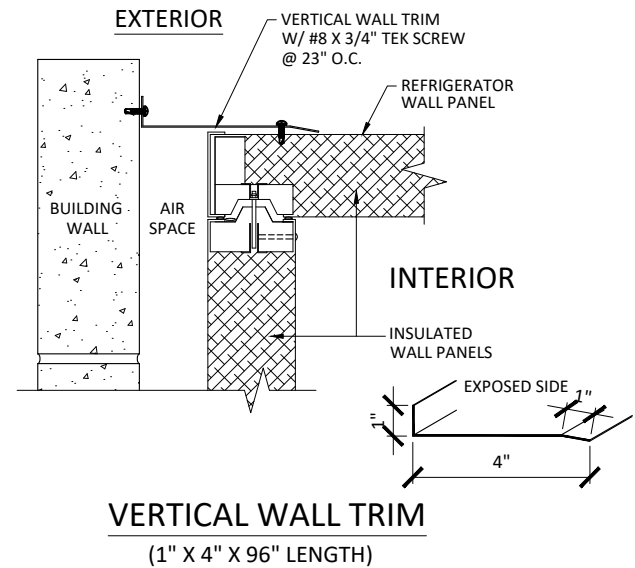
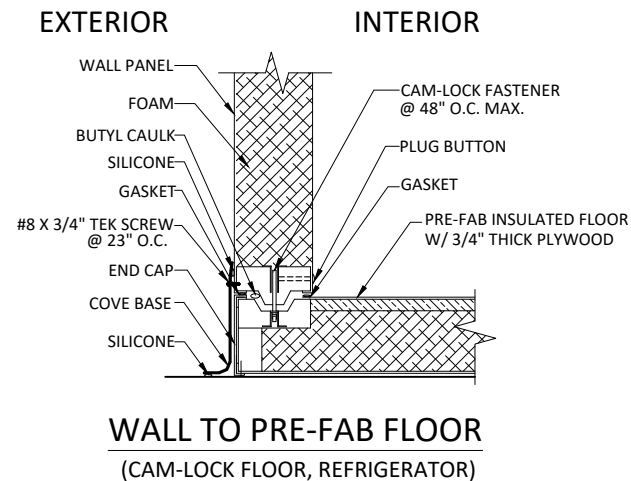
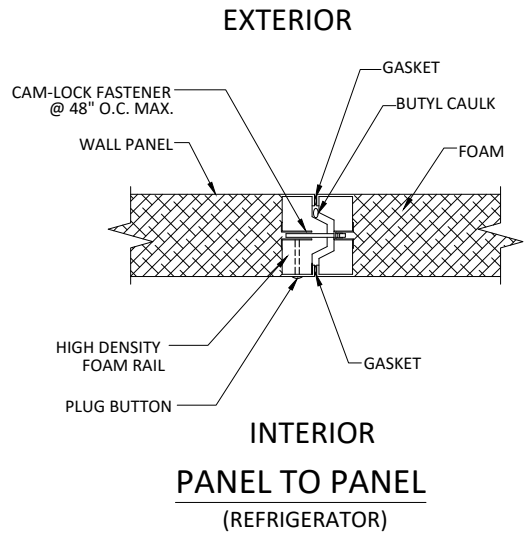
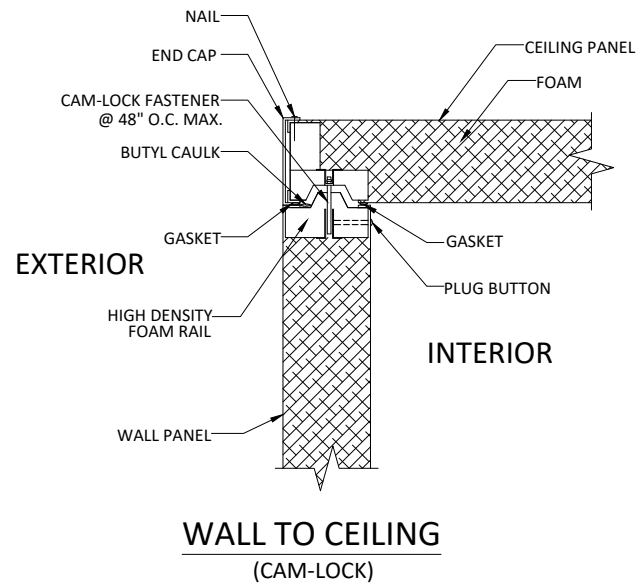
REFRIGERATION: PT0046MANAMSA 115V/1/50-60HZ, TOP MOUNT (26" X 26" OPENING)
(REQUEST MANUFACTURER'S LITERATURE IF MORE INFORMATION IS REQUIRED)

NOTES: CAM LOCK CEILING
CAM LOCK FLOOR

FEDERAL LAW MINIMUM R VALUE REQUIREMENTS						
	MIN. R VALUE FOR COMMERCIAL SECTIONS				MEAN TEMP (°F)	FEDERAL LAW MIN. R=
	3.5"	4"	5"	5.5"		
COOLER	26.6	30.4	38	41.8	55	R=25
FREEZER		34.0	42.5	46.7	20	R=32
FLOOR	29.7	34.0	42.5	46.7	20	R=28
SEC. 340 OF THE ENERGY POLICY AND CONSERVATION ACT (42 U.S.C. 6311) ASTM METHOD C-518						

REVISIONS				
REV.	DCN#	DESCRIPTION	DATE	CHANGED/APPROVED
X01	-	PRELIMINARY RELEASE	...	RT

CUSTOMER:		APPROVAL:		<div>MOPEC GROUP LEGAL NOTE</div> <div>THE DRAWING, DESIGN AND INFORMATION PROVIDED IS INTENDED TO BE USED SOLELY BY THE CUSTOMER AS A REFERENCE. UNAUTHORIZED DISCLOSURE TO THIRD PARTIES, USE, DUPLICATION, EDITING OR MODIFICATIONS, WITHOUT PRIOR WRITTEN PERMISSION FROM MOPEC INC., IS STRICTLY FORBIDDEN AND IS IN VIOLATION OF U.S. COPYRIGHT LAWS</div> <div>AND WILL BE SUBJECT TO CIVIL DAMAGES AND PROSECUTION.</div> <div>APPROVALS</div> <div>DATE</div> <div>DRAWN BY</div> <div>ROBERT</div> <div>...</div> <div>CHECKED BY</div> <div>...</div> <div>...</div> <div>APPROVED BY</div> <div>...</div> <div>...</div>		<div><div><div>MOPEC GROUP</div><div><div>mopec</div><div>MORTECH</div><div>MANUFACTURING</div></div></div><div>800 TECH ROW MADISON HGTS, MI 48071 PH: 1-248-291-2040 FAX: 1-248-291-2050 www.mopec.com</div></div>			
PROJECT:						TITLE			
...						MODEL: KB36001-F REFRIGERATOR, ONE BODY			
...									
SIGNATURE:		DATE:		SIZE	DWG NO.	PROJECT NO.	REV.		
				B	KB36001-F	...	X01		
				SCALE	CUSTOMER ORDER NO.		SHEET		
				1/4" = 1'-0"	...		1 OF 2		



EXTERIOR RAMP

REVISIONS				
REV.	DCN#	DESCRIPTION	DATE	CHANGED/APPROVED
X01	-	PRELIMINARY RELEASE	...	RT

CUSTOMER:		<div>MOPEC GROUP LEGAL NOTE</div> <div>THE DRAWING, DESIGN AND INFORMATION PROVIDED IS INTENDED TO BE USED SOLELY BY THE CUSTOMER AS A REFERENCE. UNAUTHORIZED DISCLOSURE TO THIRD PARTIES, USE, DUPLICATION, EDITING OR MODIFICATIONS, WITHOUT PRIOR WRITTEN PERMISSION FROM MOPEC INC., IS STRICTLY FORBIDDEN AND IS IN VIOLATION OF U.S. COPYRIGHT LAWS AND WILL BE SUBJECT TO CIVIL DAMAGES AND PROSECUTION.</div>		<div><div><div>MOPEC GROUP</div><div>800 TECH ROW MADISON HGTS, MI 48071 PH: 1-248-291-2040 FAX: 1-248-291-2050 www.mopec.com</div></div><div><div>Mopec</div><div>MORTECH</div><div>RESEARCH & TECHNOLOGY MANUFACTURING</div></div></div>	
PROJECT:				<div>TITLE</div> <div>MODEL: KB36001-F</div> <div>CONNECTION DETAILS</div> <div><div>SIZE</div><div>B</div><div><div>DWG NO.</div><div>KB36001-F</div></div><div><div>PROJECT NO.</div><div>...</div></div><div><div>REV.</div><div>X01</div></div></div>	
DRAWN BY		DATE			
ROBERT		...			
CHECKED BY					
...		...			
APPROVED BY		...		SCALE	
...		...		1/4" = 1'-0"	
				CUSTOMER ORDER NO.	
				...	
				SHEET	
				2 OF 2	

PT0046MANAMSA - SUBMITTAL



Project Name:	KB36001-F	Project Location:	US
Quote ID:	R3390336	Item #:	2000
Submitted For:	-	Submitted On:	11/07/2024
Submitted By:	Maliha Williamson	Submitted From:	-
Identity #:	-	Tag:	Insulated Floor

☐ For Record

☐ For Approval

By: _____

Date: _____

General Product Information

Product Family:	PTN	Voltage: (Volts/Ph/Hz)	115/1
Application:	Indoor	Refrigerant Type:	R448A
Temperature Range:	Medium Temp	Unit Cooler Motor Type:	VSEC
Defrost Type:	Air	Compressor Model:	RST40C1E

Technical Information

Performance Data

Application Capacity*			Unit Cooler CFM	Altitude	AWEF Value
Ambient Temp (°F)	Room Temp (°F)	Application Capacity* (BTU/H)			
90	38	4660	330	0	5.61

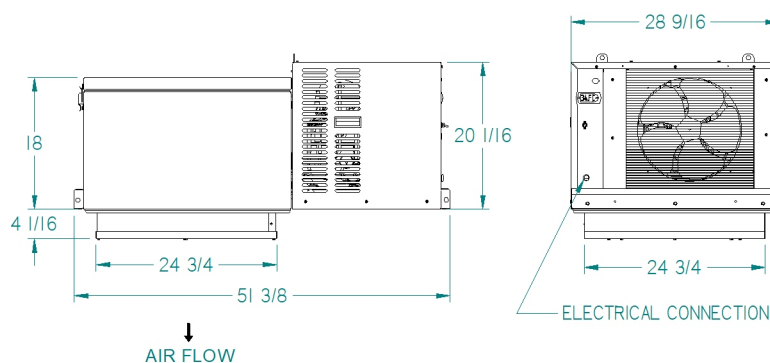
Electrical Data

MCA	MOPD	Unit Amps
12.9	20	10.9

Unit Specifications

Plug Supplied?	Matching NEMA Receptacle Number	Approx. Net Weight (lbs)
YES	5-20R	195

Dimensional Drawing(s)



UOM: inches

AGENCY LISTINGS





Project Name:	KB36001-F	Project Location:	US
Quote ID:	R3390336	Item #:	2000
Submitted For:	-	Submitted On:	11/07/2024
Submitted By:	Maliha Williamson	Submitted From:	-
Identity #:	-	Tag:	Insulated Floor

Standard Features

AESTHETICS

- STUCCO-ALUMINUM FINISH

ENVIRONMENTALLY FRIENDLY

- PRE-CHARGED WITH R448A/R513A REFRIGERANT TO MEET CARB & US CLIMATE ALLIANCE REQUIREMENTS

ENERGY EFFICIENCY

- P1 UNITS USE SINGLE SPEED EC MOTORS (EVAPORATORS)
- P2 & P3 UNITS USE 2 SPEED EC MOTORS (EVAPORATORS)
- P2 & P3 UNITS USE SINGLE SPEED EC MOTORS (CONDENSERS, PT0046M USES PSC)
- P2 & P3 UNITS USE A MICROCHANNEL CONDENSER FOR HIGHER EFFICIENCY & CORROSION PROTECTION

CONTROLS

- MICROPROCESSOR CONTROL

PERFORMANCE

- MAXIMUM VERTICAL STORAGE CAPACITY
- IDEAL FOR HOLDING TEMPERATURE
- MEDIUM-TEMP AIR AND ELECTRIC DEFROST
- LOW-TEMP ELECTRIC DEFROST

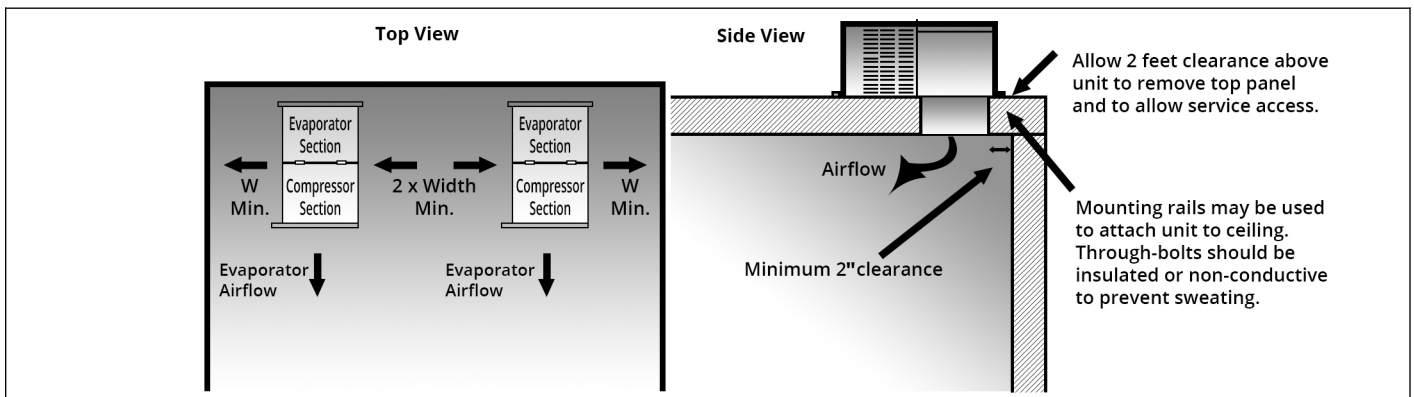
RELIABLE & DURABLE

- LIQUID-LINE FILTER DRIER (MEDIUM AND LARGE CABINET ONLY)
- TWO-YEAR PARTS WARRANTY

EASE OF INSTALLATION

- PRE-CHARGED WITH REFRIGERANT
- NO REFRIGERANT PIPING REQUIRED
- EVAPORATIVE CONDENSATE PAN (INDOOR UNITS ONLY)
- ALL UNITS GET A REMOVABLE TOP PANEL WITH LATCHES
- ALL P1 & SELECT P2 & P3 UNITS COME WITH A POWER CORD

Minimum Unit Clearances



Notes

* Capacities shown are Application Capacities reflecting nominal operation at 10°F TD. For models within the scope of the DOE AWEF (Annual Walk-in Energy Factor) standard, the Net Capacity is determined by the AHRI 1250 test method. DOE will publish this compliance data at www.regulations.doe.gov