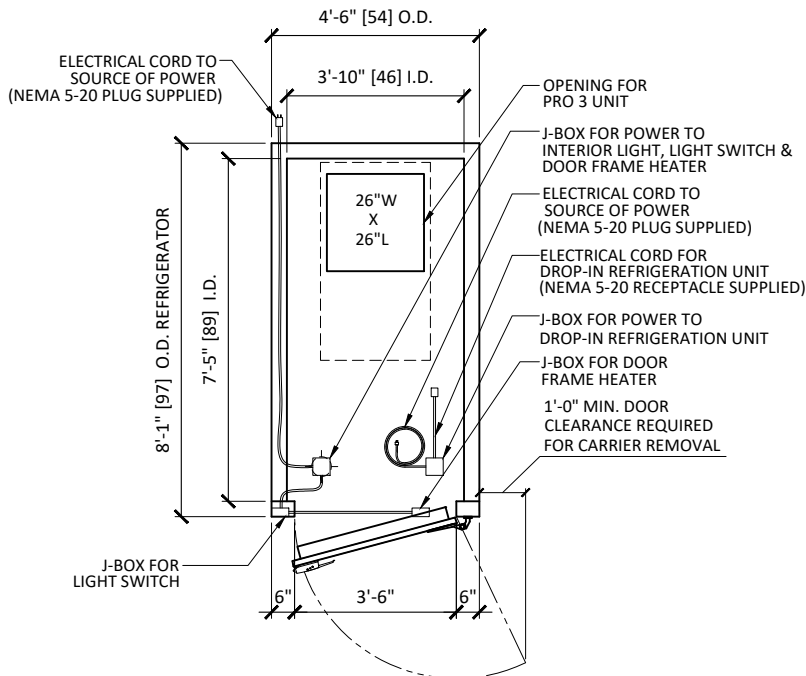


1. APPLICABLE TO STANDARDS AND SPECIFICATIONS;  
ASME Y14.5-2009, DIMENSIONS AND TOLERANCES  
ASME Y14.38-2007 ABBREVIATIONS
2. UNIT MUST NOT BE ENCLOSED IN AN UNVENTILATED SPACE.  
ADEQUATE AIR CIRCULATION THROUGH THE CONDENSING UNIT  
IS CRITICAL TO INSURE PROPER OPERATION
3. 2" MINIMUM AIR GAP IS REQUIRED AROUND PERIMETER OF THE UNIT
4. NEMA 5-20 RECEPTACLE REQUIRED

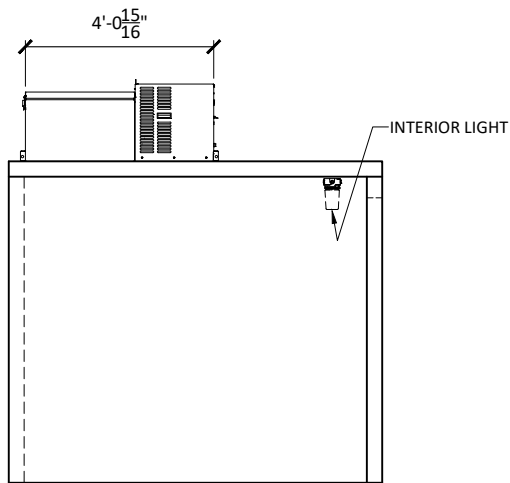


5. REFRIGERATOR SHIPS ASSEMBLED W/ REFRIGERATION UNIT REMOVED

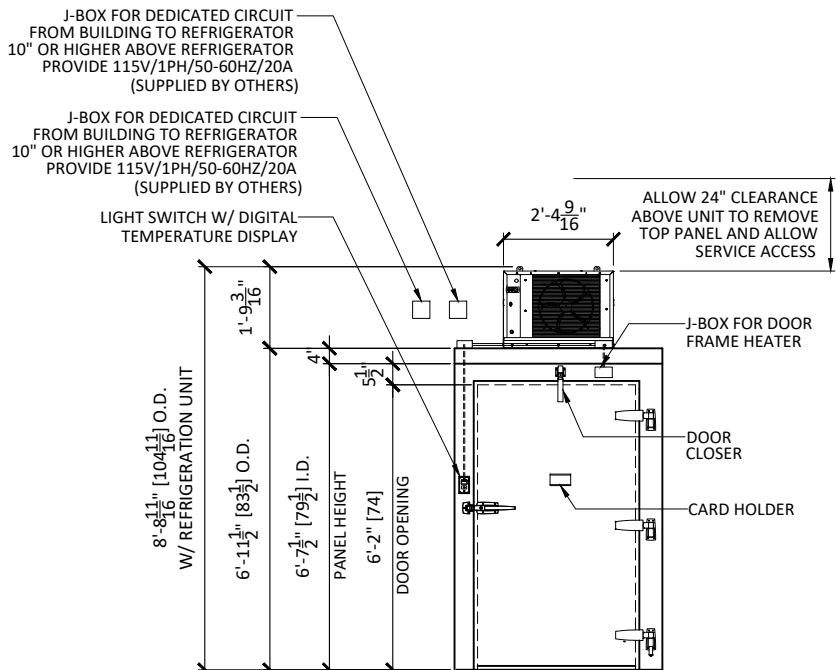
CONSTRUCTION:	
WALLS:	4" THICK HIGH DENSITY FOAM RAILS POLYURETHANE, FOAMED-IN-PLACE
CEILING:	4" THICK HIGH DENSITY FOAM RAILS POLYURETHANE, FOAMED-IN-PLACE
FINISH:	
WALLS:	.040" STUCCO EMBOSSED ALUMINUM INTERIOR .040" STUCCO EMBOSSED ALUMINUM EXTERIOR
CEILING:	.040" STUCCO EMBOSSED ALUMINUM INTERIOR .040" STUCCO EMBOSSED ALUMINUM EXTERIOR
DOOR:	(1) 42" X 74" OVERLAP, INFIT, COOLER DOOR W/ DOOR FRAME HEATER (3-SIDED) (1) COMPONENT HARDWARE LATCH W/ INSIDE RELEASE (PUSH ROD) #W19-1500-C (2) COMPONENT HARDWARE CAM-RISE HINGE, #W58-1137 (1) COMPONENT HARDWARE CAM-RISE HINGE W/ SPRING ASSIST, #W58-3137
ACCESSORIES:	(1) COMPONENT HARDWARE LED VAPOR PROOF LIGHT FIXTURE MODEL #VXS-LED10PC (SURFACE MOUNTED) (1) KASON LIGHT SWITCH W/ DIGITAL TEMPERATURE DISPLAY, MODEL #1967-3 6" EXTERIOR COVE BASE SILICONE, TRIM & SCREWS
REFRIGERATION:	PT0046MANAMSA 115V/1/50-60HZ, TOP MOUNT (26" X 26" OPENING) (REQUEST MANUFACTURER'S LITERATURE IF MORE INFORMATION IS REQUIRED)
NOTES:	CAM LOCK CEILING




## PLAN VIEW



## LEFT ELEVATION




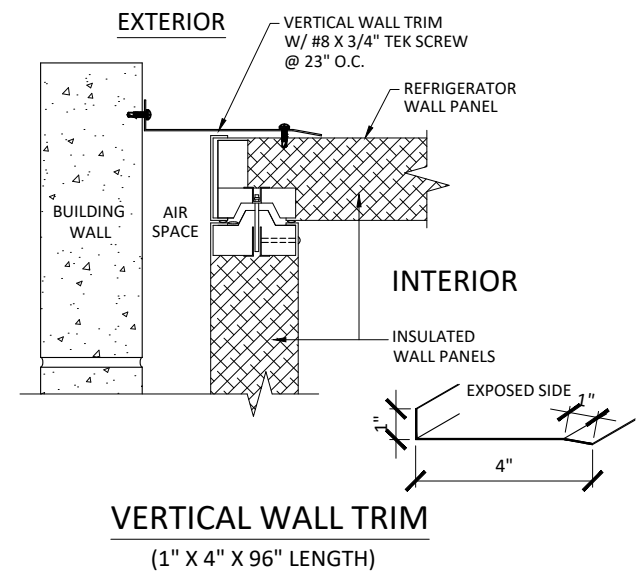
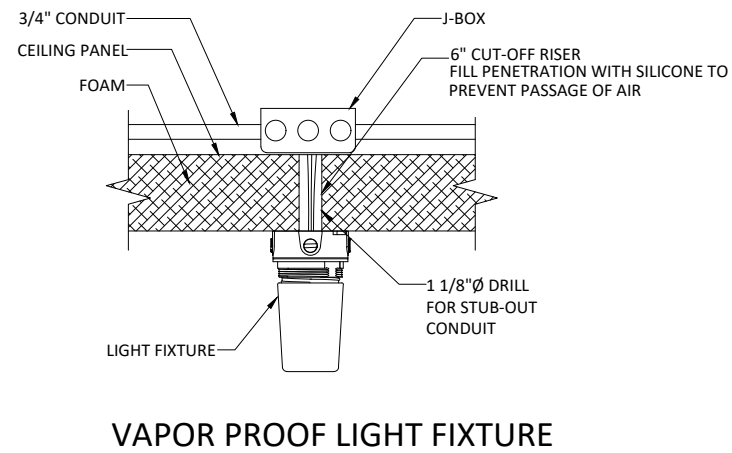
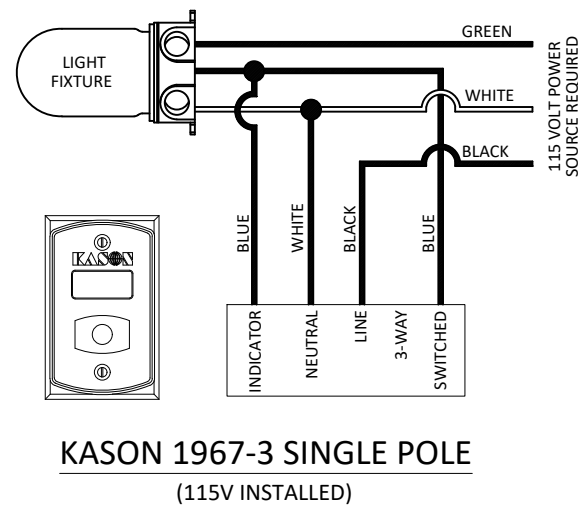
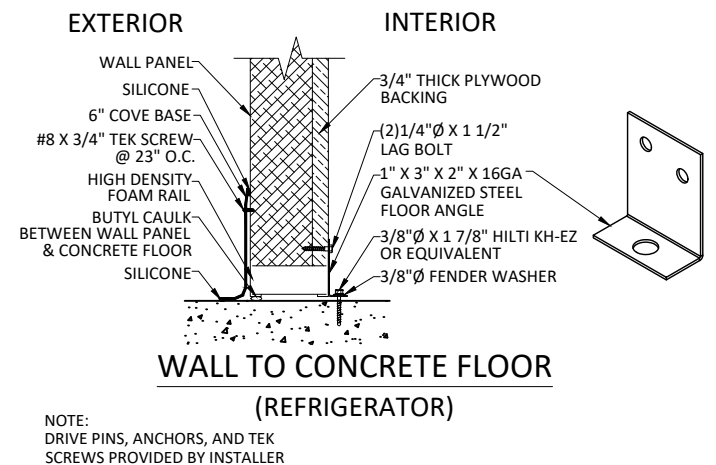
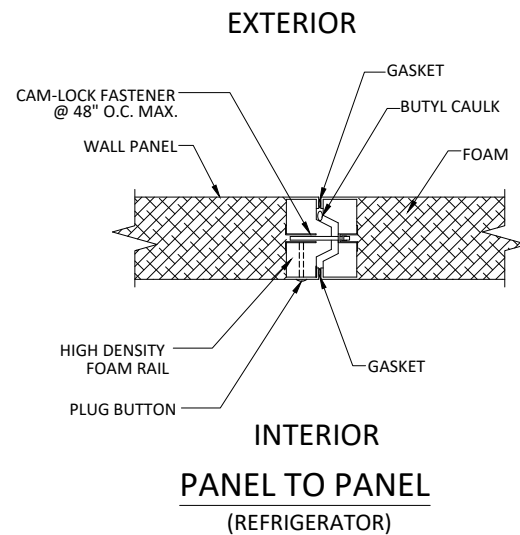
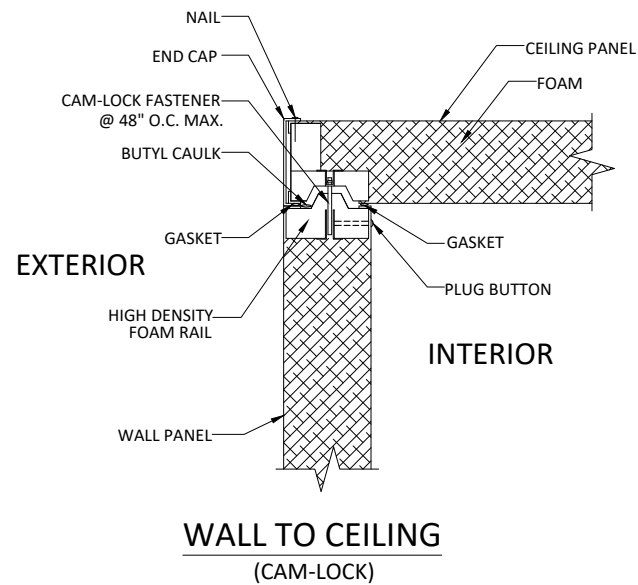
## FRONT ELEVATION

FEDERAL LAW MINIMUM R VALUE REQUIREMENTS						
	MIN. R VALUE FOR COMMERCIAL SECTIONS				MEAN TEMP (°F)	FEDERAL LAW MIN. R=
	3.5"	4"	5"	5.5"		
COOLER	26.6	30.4	38	41.8	55	R=25
FREEZER		34.0	42.5	46.7	20	R=32
FLOOR	29.7	34.0	42.5	46.7	20	R=28
SEC. 340 OF THE ENERGY POLICY AND CONSERVATION ACT (42 U.S.C. 6311) ASTM METHOD C-518						


REVISIONS				
REV.	DCN#	DESCRIPTION	DATE	CHANGED/APPROVED
X01	-	PRELIMINARY RELEASE	...	RT

REFRIGERATION			PERFORMANCE	ELECTRICAL DATA				
MODEL NO.	TOTAL HEAT OF REJECTION @ 90°	REFRIGERANT TYPE	APPLICATION CAPACITY (BTU/H)	VOLTS	PHASE	Hz	MCA	MOPD
PT0046MANAMSA	6,860 BTUH	R448A	4,660	115	1	50-60	12.9	20

CUSTOMER:	APPROVAL:		<p align="center"><b>MOPEC GROUP LEGAL NOTE</b></p> <p>THE DRAWING, DESIGN AND INFORMATION PROVIDED IS INTENDED TO BE USED SOLELY BY THE CUSTOMER AS A REFERENCE. UNAUTHORIZED DISCLOSURE TO THIRD PARTIES, USE, DUPLICATION, EDITING OR MODIFICATIONS, WITHOUT PRIOR WRITTEN PERMISSION FROM MOPEC INC., IS STRICTLY FORBIDDEN AND IS IN VIOLATION OF U.S. COPYRIGHT LAWS</p> <p align="center">AND WILL BE SUBJECT TO CIVIL DAMAGES AND PROSECUTION,</p>		 <p>800 TECH ROW MADISON HGTS, MI 48071 PH: 1-248-291-2040 FAX: 1-248-291-2050 <a href="http://www.mopec.com">www.mopec.com</a></p>			
PROJECT:			<p align="center"><b>APPROVALS</b></p> <p>DRAWN BY: ROBERT</p>		<p align="center"><b>DATE</b></p> <p>...</p>		<p>TITLE</p> <p align="center"><b>MODEL: KB36001</b></p> <p align="center"><b>REFRIGERATOR, ONE BODY</b></p>	
...			<p align="center"><b>CHECKED BY</b></p> <p>...</p>		<p align="center"><b>...</b></p>		<p>SIZE: B</p>	
...	SIGNATURE:		DATE:		<p align="center"><b>APPROVED BY</b></p> <p>...</p>		<p align="center"><b>...</b></p>	
					<p>SCALE: 1/4" = 1'-0"</p>		<p>CUSTOMER ORDER NO. ...</p>	
					<p>SHEET 1 OF 2</p>			



REVISIONS				
REV.	DCN#	DESCRIPTION	DATE	CHANGED/APPROVED
X01	-	PRELIMINARY RELEASE	...	RT

CUSTOMER:		<b>MOPEC GROUP LEGAL NOTE</b>		 800 TECH ROW MADISON HGTS, MI 48071 PH: 1-248-291-2040 FAX: 1-248-291-2050 <a href="http://www.mopec.com">www.mopec.com</a>	
...		THE DRAWING, DESIGN AND INFORMATION PROVIDED IS INTENDED TO BE USED SOLELY BY THE CUSTOMER AS A REFERENCE. UNAUTHORIZED DISCLOSURE TO THIRD PARTIES, USE, DUPLICATION, EDITING OR MODIFICATIONS, WITHOUT PRIOR WRITTEN PERMISSION FROM MOPEC INC., IS STRICTLY FORBIDDEN AND IS IN VIOLATION OF U.S. COPYRIGHT LAWS AND WILL BE SUBJECT TO CIVIL DAMAGES AND PROSECUTION.		<b>MODEL: KB36001</b> <b>CONNECTION DETAILS</b>	
PROJECT:		TITLE			
...		SIZE			
...		DWG NO.			
...		PROJECT NO.			
		B		KB36001	
DRAWN BY		ROBERT		REV.	
CHECKED BY		...		X01	
APPROVED BY		...		SCALE	
...		1/4" = 1'-0"		CUSTOMER ORDER NO.	
		...		SHEET	
				2 OF 2	

# PT0046MANAMSA - SUBMITTAL



Project Name:	KB36001	Project Location:	US
Quote ID:	R3390336	Item #:	1000
Submitted For:	-	Submitted On:	11/07/2024
Submitted By:	Maliha Williamson	Submitted From:	-
Identity #:	-	Tag:	Concrete Floor

☐ For Record

☐ For Approval

By: \_\_\_\_\_

Date: \_\_\_\_\_

## General Product Information

Product Family:	PTN	Voltage: (Volts/Ph/Hz)	115/1
Application:	Indoor	Refrigerant Type:	R448A
Temperature Range:	Medium Temp	Unit Cooler Motor Type:	VSEC
Defrost Type:	Air	Compressor Model:	RST40C1E

## Technical Information

### Performance Data

Application Capacity*			Unit Cooler CFM	Altitude	AWEF Value
Ambient Temp (°F)	Room Temp (°F)	Application Capacity* (BTU/H)			
90	38	4660	330	0	5.61

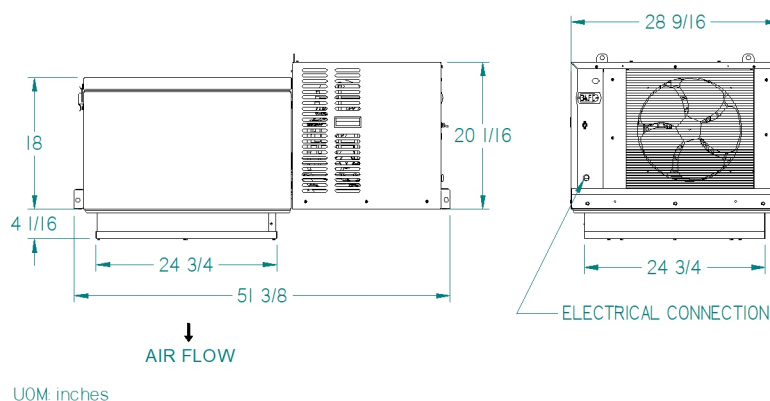
### Electrical Data

MCA	MOPD	Unit Amps
12.9	20	10.9

### Unit Specifications

Plug Supplied?	Matching NEMA Receptacle Number	Approx. Net Weight (lbs)
YES	5-20R	195

### Dimensional Drawing(s)



AGENCY LISTINGS





Project Name:	KB36001	Project Location:	US
Quote ID:	R3390336	Item #:	1000
Submitted For:	-	Submitted On:	11/07/2024
Submitted By:	Maliha Williamson	Submitted From:	-
Identity #:	-	Tag:	Concrete Floor

## Standard Features

### AESTHETICS

- STUCCO-ALUMINUM FINISH

### ENVIRONMENTALLY FRIENDLY

- PRE-CHARGED WITH R448A/R513A REFRIGERANT TO MEET CARB & US CLIMATE ALLIANCE REQUIREMENTS

### ENERGY EFFICIENCY

- P1 UNITS USE SINGLE SPEED EC MOTORS (EVAPORATORS)
- P2 & P3 UNITS USE 2 SPEED EC MOTORS (EVAPORATORS)
- P2 & P3 UNITS USE SINGLE SPEED EC MOTORS (CONDENSERS, PT0046M USES PSC)
- P2 & P3 UNITS USE A MICROCHANNEL CONDENSER FOR HIGHER EFFICIENCY & CORROSION PROTECTION

### CONTROLS

- MICROPROCESSOR CONTROL

### PERFORMANCE

- MAXIMUM VERTICAL STORAGE CAPACITY
- IDEAL FOR HOLDING TEMPERATURE
- MEDIUM-TEMP AIR AND ELECTRIC DEFROST
- LOW-TEMP ELECTRIC DEFROST

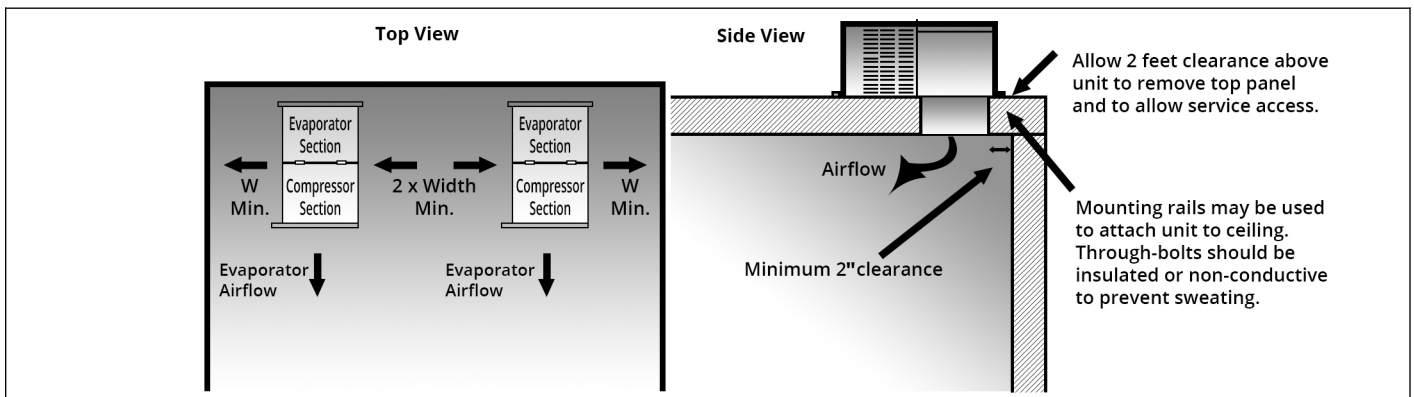
### RELIABLE & DURABLE

- LIQUID-LINE FILTER DRIER (MEDIUM AND LARGE CABINET ONLY)
- TWO-YEAR PARTS WARRANTY

### EASE OF INSTALLATION

- PRE-CHARGED WITH REFRIGERANT
- NO REFRIGERANT PIPING REQUIRED
- EVAPORATIVE CONDENSATE PAN (INDOOR UNITS ONLY)
- ALL UNITS GET A REMOVABLE TOP PANEL WITH LATCHES
- ALL P1 & SELECT P2 & P3 UNITS COME WITH A POWER CORD

## Minimum Unit Clearances



## Notes

\* Capacities shown are Application Capacities reflecting nominal operation at 10°F TD. For models within the scope of the DOE AWEF (Annual Walk-in Energy Factor) standard, the Net Capacity is determined by the AHRI 1250 test method. DOE will publish this compliance data at [www.regulations.doe.gov](http://www.regulations.doe.gov)