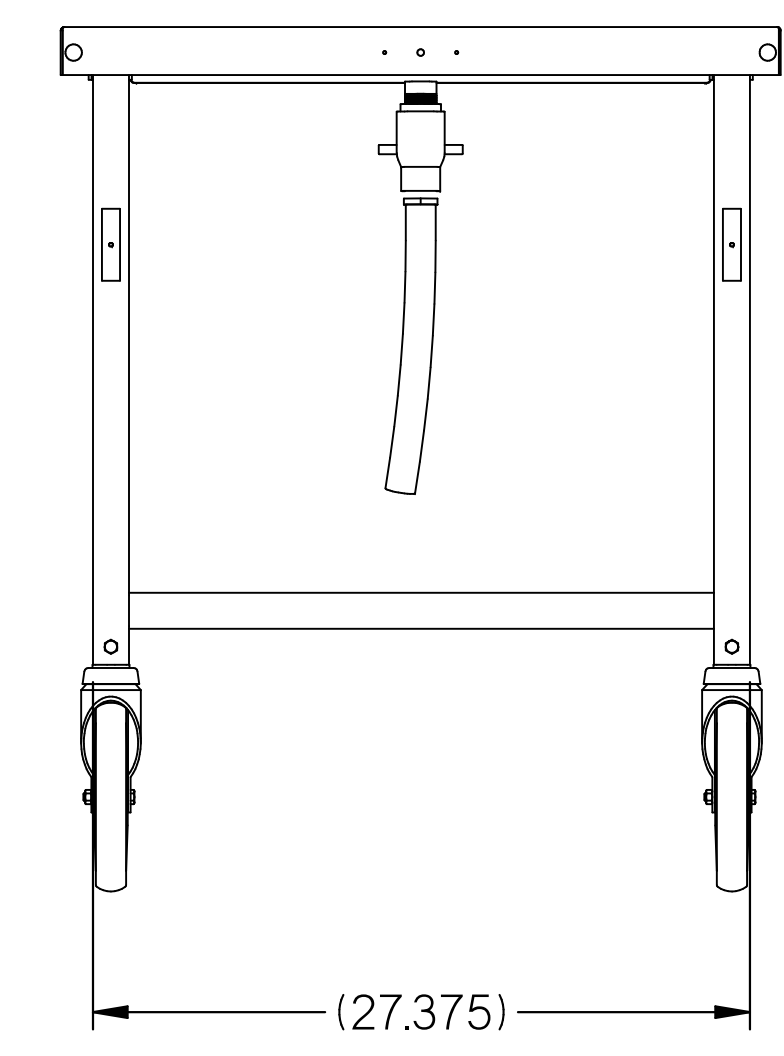
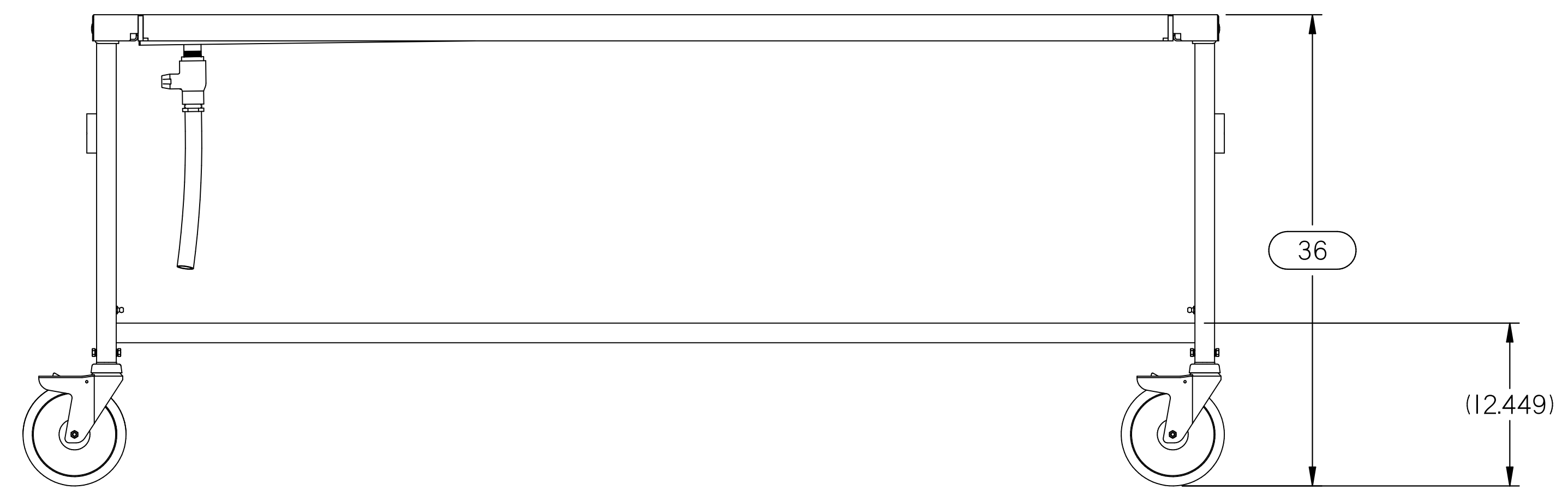
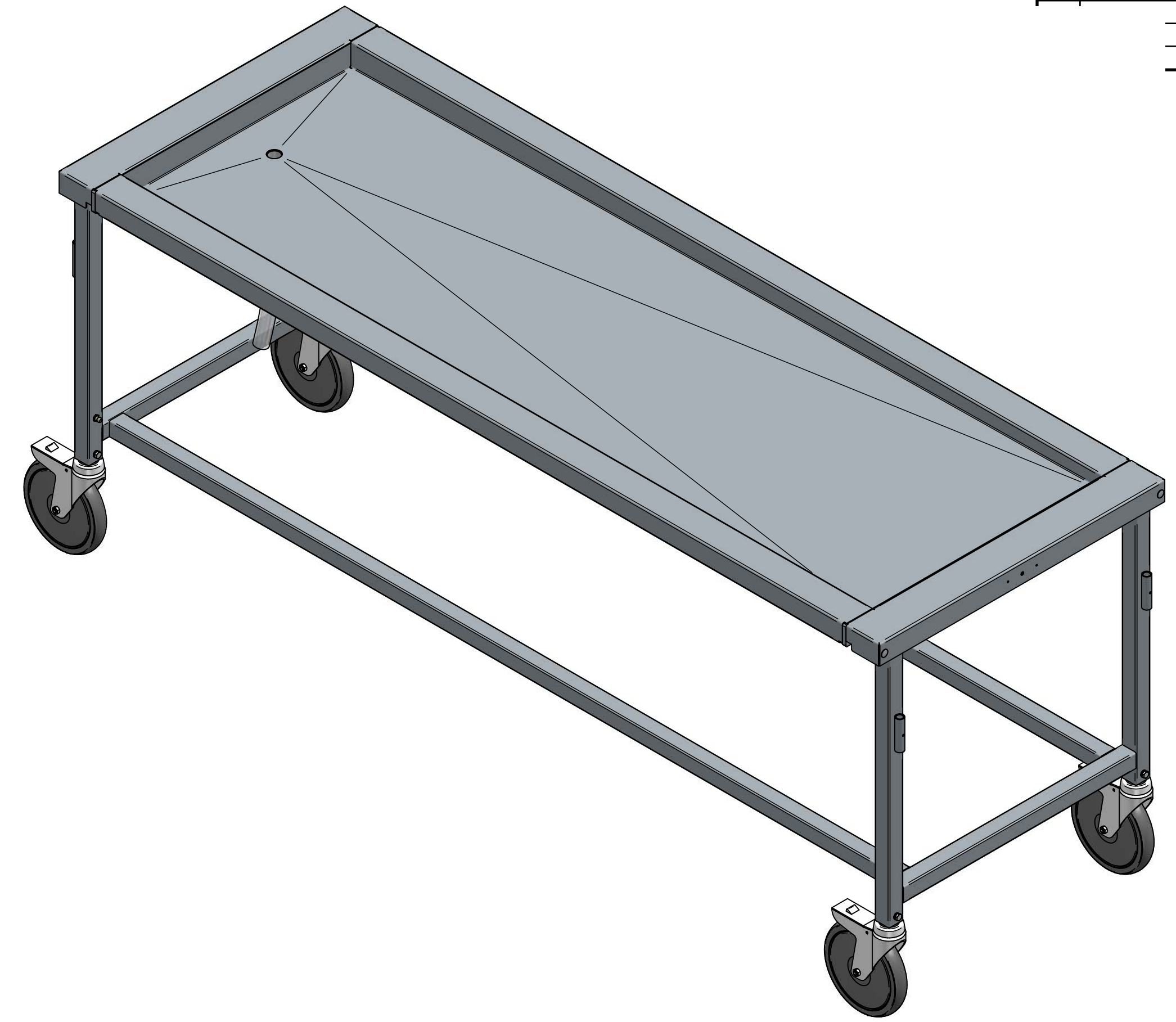
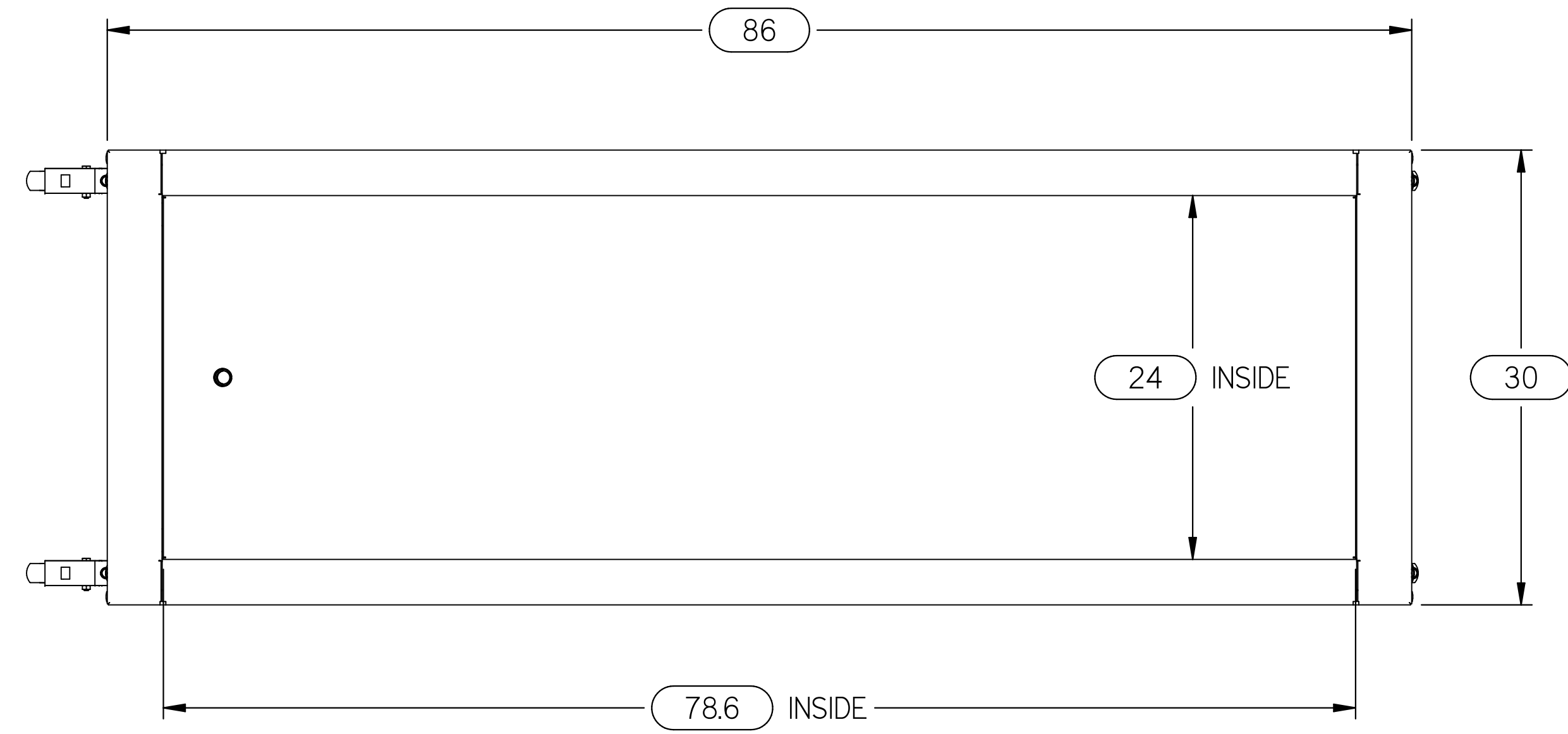


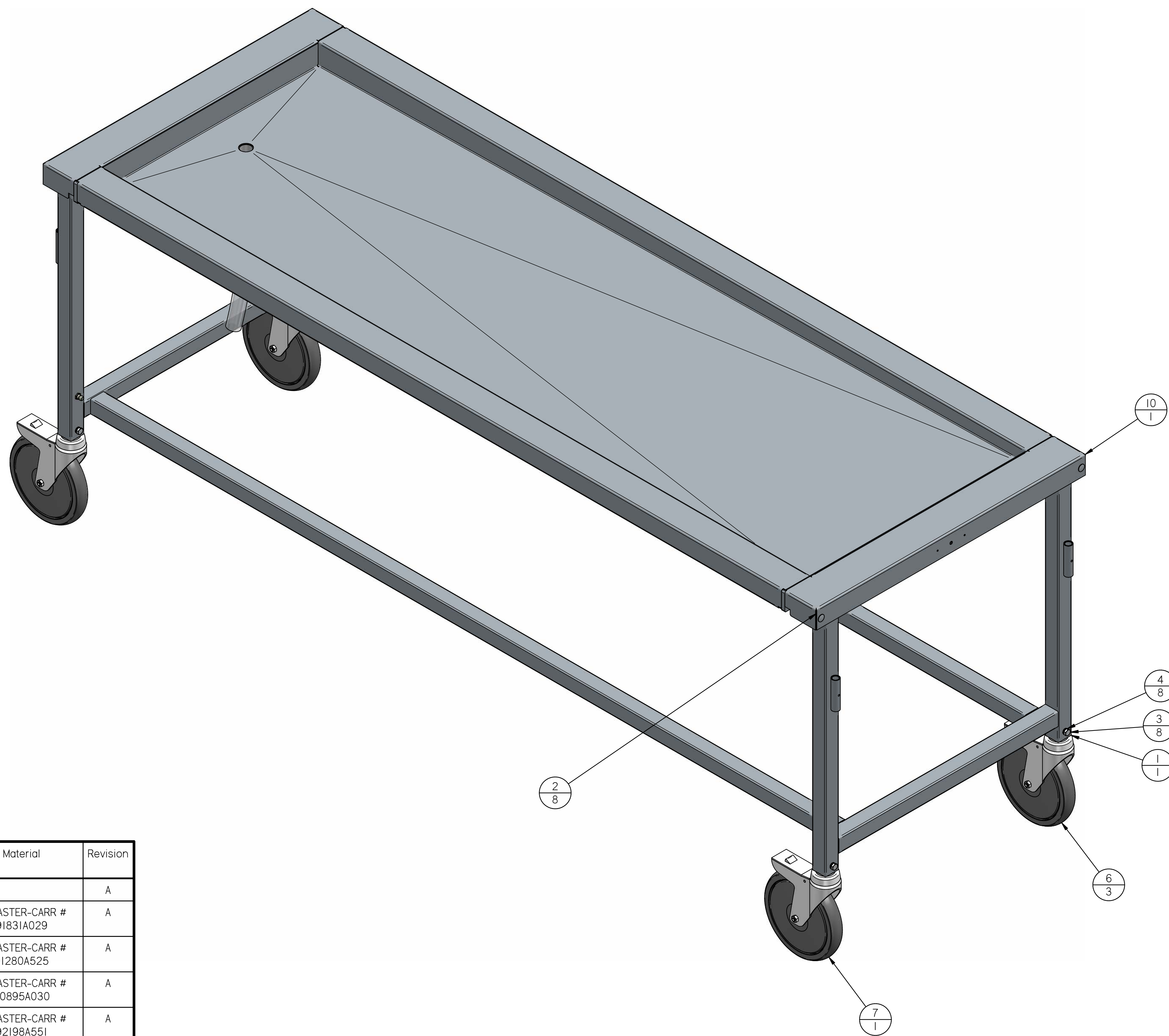
REV	DESCRIPTION	DATE	ECN #	APPR
A	INITIAL RELEASE	00-XXX-19	XXXXX	MM



MOPEC LEGAL NOTE THIS DOCUMENT CONTAINS PROPRIETARY INFORMATION OF MOPEC, AND MAY NOT BE COPIED IN WHOLE OR PART, AND NO USE SHALL BE MADE OF IT OTHER THAN FOR WHICH IT HAS BEEN SUBMITTED WITHOUT THE WRITTEN PERMISSION OF A MOPEC MANAGER MOPEC 2024	UNLESS OTHERWISE SPECIFIED ALL DIMENSIONS IN INCHES TOLERANCES 0.0 ± 0.1 in 0.00 ± 0.05 in 0.000 ± 0.010 in 0.0000 ± 0.0010 in ANGLES ± 0.5° BREAK ALL CORNERS 0.063 X 45° ALL FILLET RADII R0.063 / 0.125 in INSPECT OVAL DIMENSIONS	 DRAWN TO 3RD ANGLE PROJECTION	DRAWN BY: jjohnson DATE: 12/19/2023	PART NUMBER: HA100-A
			CHECKED BY: DATE: 12/19/2023	DESCRIPTION: HA100 DISSECTION CART ASSEMBLY
			APPROVED BY: MMcCLAIN DATE: 12/19/2023	SIZE: A2 FILE NAME: HA100-A.dft SCALE: 1:8
			DO NOT SCALE IF IN DOUBT ASK	SHEET 1 OF 2

HA100-A.dft

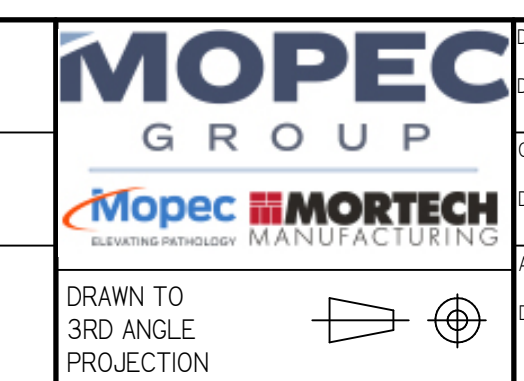
REV	DESCRIPTION	DATE	ECN #	APPR
A	INITIAL RELEASE	00-XXX-19	XXXXX	MM



Item Number	Quantity	File Name	Title	Material	Revision
1	1	H01101-A.asm	NON-ELEVATING CART FRAME ASSEMBLY		A
2	8	PB0016.par	NUT - SS, 1/4"-20, NYLON LOCK	McMASTER-CARR # 91831A029	A
3	8	PB0137.par	BOLT - ZINC, M8 x 1.25 x 14mm, HEX HEAD	McMASTER-CARR # 91280A525	A
4	8	PB0211.par	WASHER - SS, M8 x 5/16", SERRATED BELLEVILLE	McMASTER-CARR # 90895A030	A
5	8	PB0303.par	BOLT - SS - 1/4-20 x 2-1/4" PARTIAL THREAD	McMASTER-CARR # 92198A551	A
6	3	PD0026.par	CASTER - 8" TL (POWDER COATED) RED	TENTE # 2447UAP200R05-28	A
7	1	PD0027.par	CASTER - 8" DL (POWDER COATED) GREEN	TENTE # 2441UAP200R05-28	A
8	1	PP1001-A.par	DRAIN TUBE	PVC TUBING, 1" I.D. x 1-1/4" O.D.	A
9	4	S2290-E.par	CASTER ADAPTER, 1-1/2" SQ. 16 GA. TUBE	RM0620, TUBING, RND, MS, 1-3/8" OD X 10 GA, DOM	E
10	1	S6986-B.asm	NON-VENTED CART TOP ASSEMBLY		B

MOPEC LEGAL NOTE
 THIS DOCUMENT CONTAINS PROPRIETARY INFORMATION OF MOPEC, AND MAY NOT BE COPIED IN WHOLE OR PART, AND NO USE SHALL BE MADE OF IT OTHER THAN FOR WHICH IT HAS BEEN SUBMITTED WITHOUT THE WRITTEN PERMISSION OF A MOPEC MANAGER
 MOPEC 2024

UNLESS OTHERWISE SPECIFIED ALL DIMENSIONS IN INCHES
 TOLERANCES
 0.0 ± 0.1 in
 0.00 ± 0.05 in
 0.000 ± 0.010 in
 0.0000 ± 0.0010 in
 ANGLES ±0.5°
 BREAK ALL CORNERS 0.063 X 45°
 ALL FILLET RADII R0.063 /0.125in
 INSPECT OVAL DIMENSIONS



DRAWN BY: jjohnson
 DATE: 12/19/2023
 CHECKED BY:
 DATE: 12/19/2023
 APPROVED BY: MMcCLAIN
 DATE: 12/19/2023

PART NUMBER	HAI00-A
DESCRIPTION	HAI00 DISSECTION CART ASSEMBLY
SIZE	A2
FILE NAME	HAI00-A.dft
SCALE	1:8
DO NOT SCALE IF IN DOUBT ASK	
SHEET 2 OF 2	

HA100-A.dft