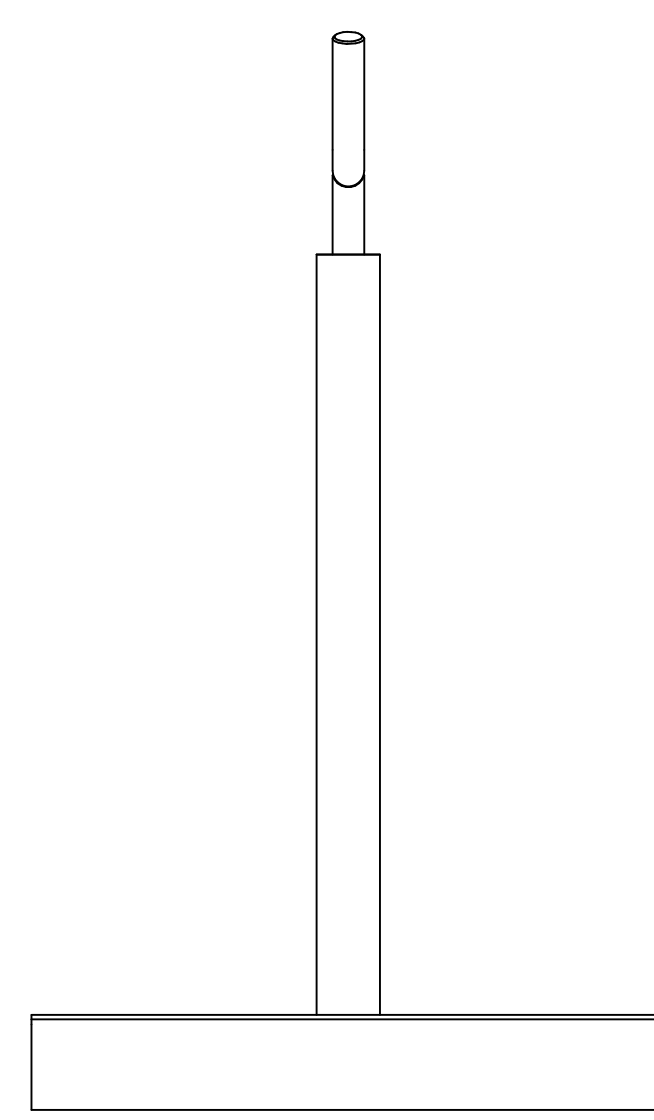
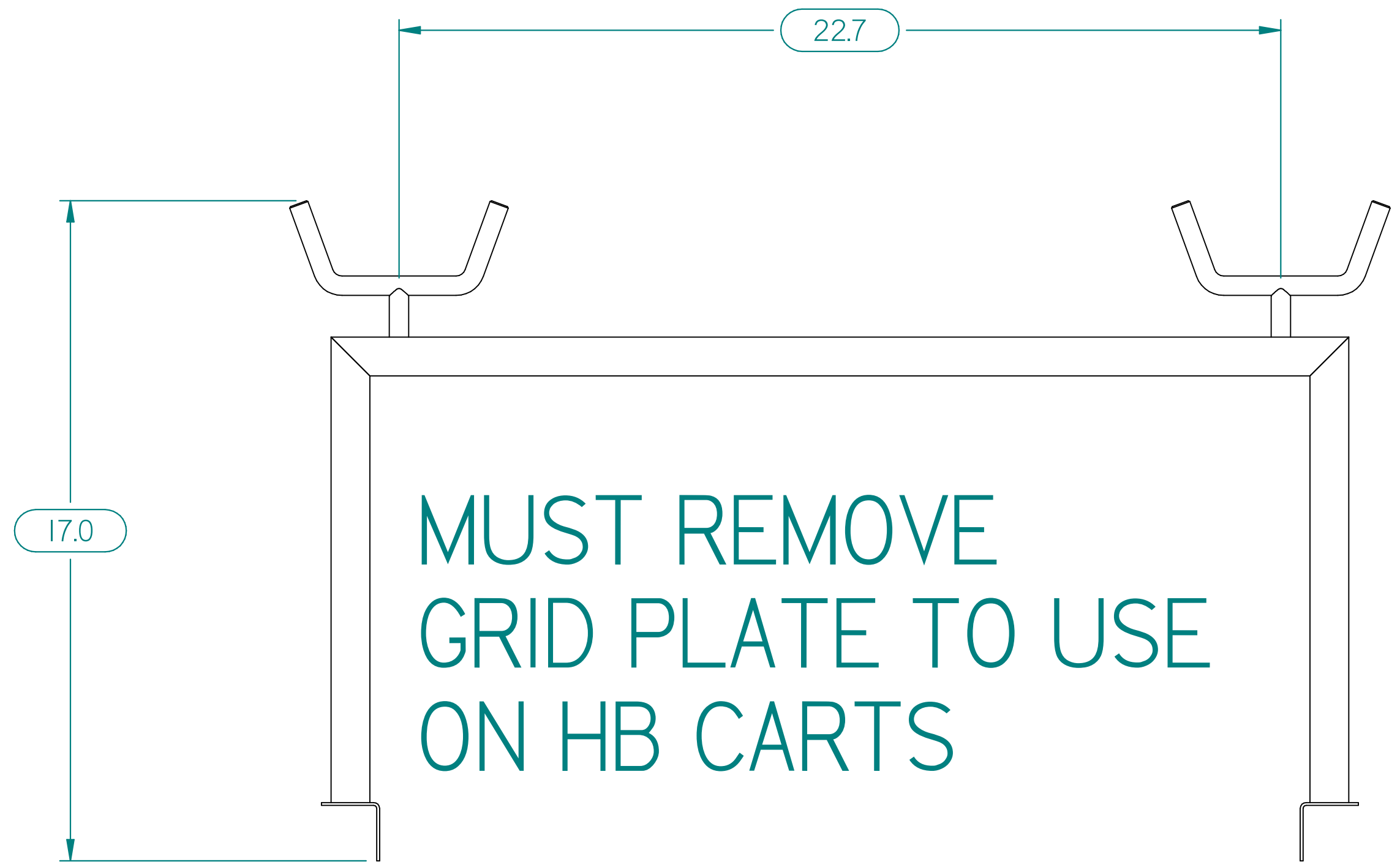
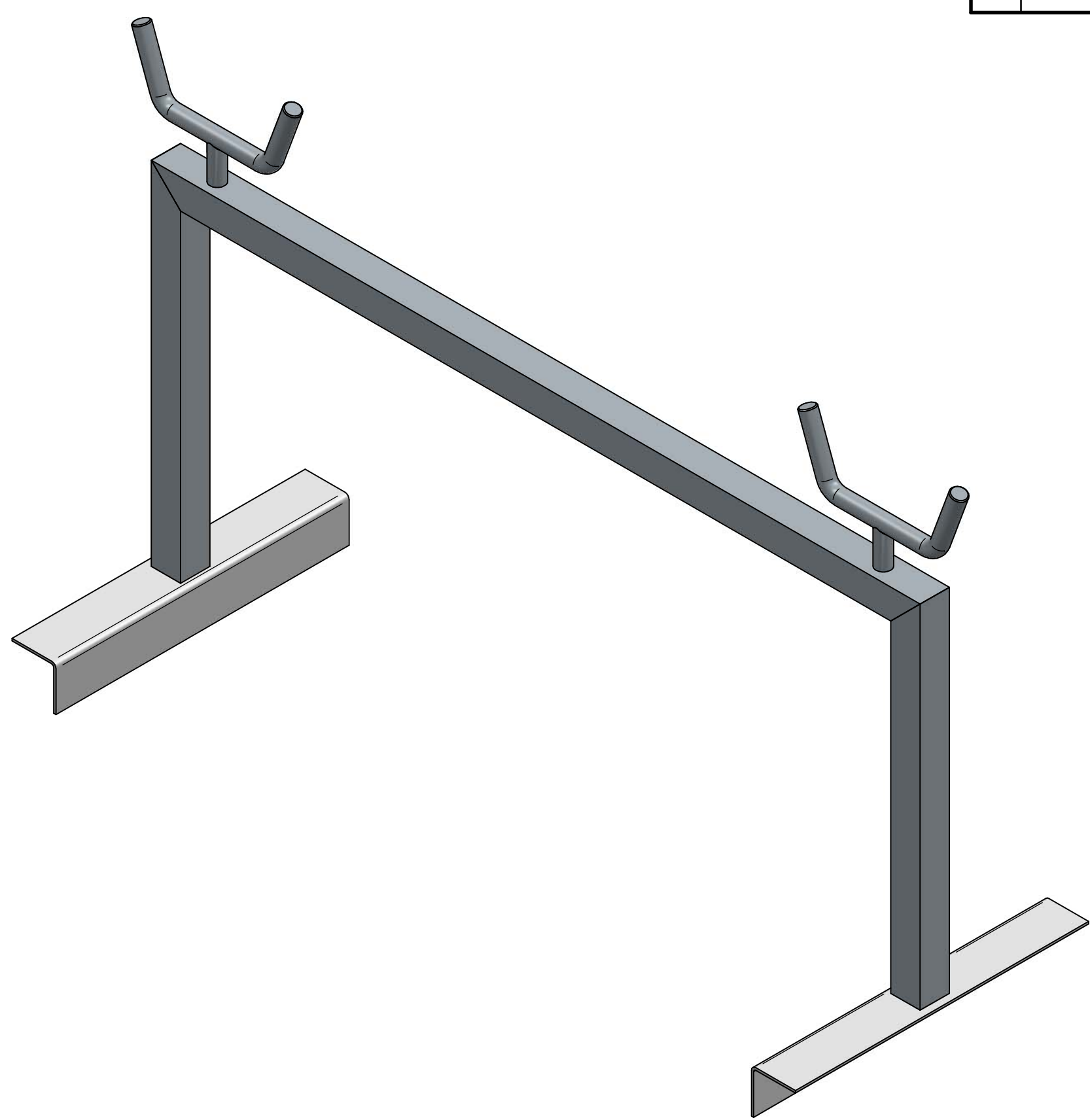
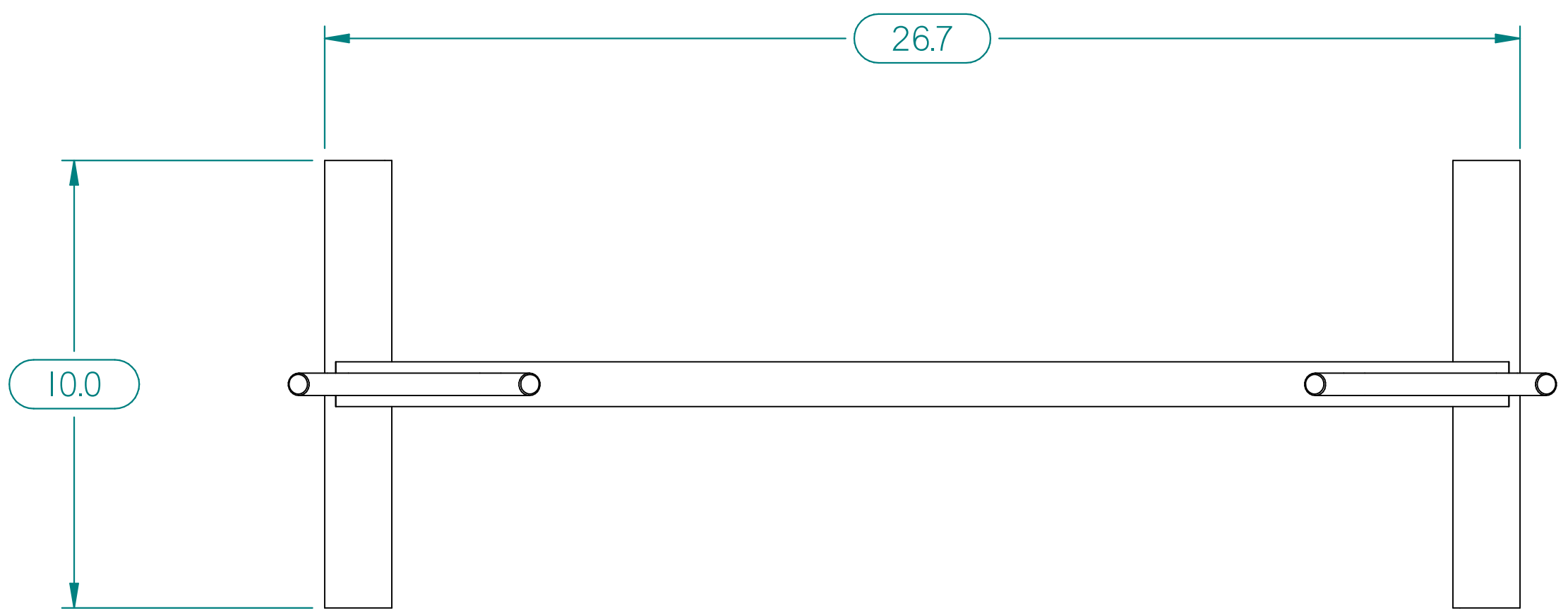


A
B
C
D
E
F
G
H

A
B
C
D
E
F
G
H



THIS DOCUMENT CONTAINS
PROPRIETARY INFORMATION OF
MOPEC, AND MAY NOT BE COPIED IN WHOLE
OR PART, AND NO USE SHALL BE MADE OF
IT OTHER THAN FOR WHICH IT HAS BEEN
SUBMITTED WITHOUT THE WRITTEN
PERMISSION OF A MOPEC MANAGER

UNLESS OTHERWISE SPECIFIED:
ALL DIMENSIONS IN INCHES
TOLERANCES
0.0 ± 0.1 in
0.00 ± 0.05 in
0.000 ± 0.010 in
0.0000 ± 0.0010 in
ANGLES ± 0.5°
BREAK ALL CORNERS 0.063 X 45°
ALL FILLET RADII R0.063 / 0.125 in
INSPECT OVAL DIMENSIONS

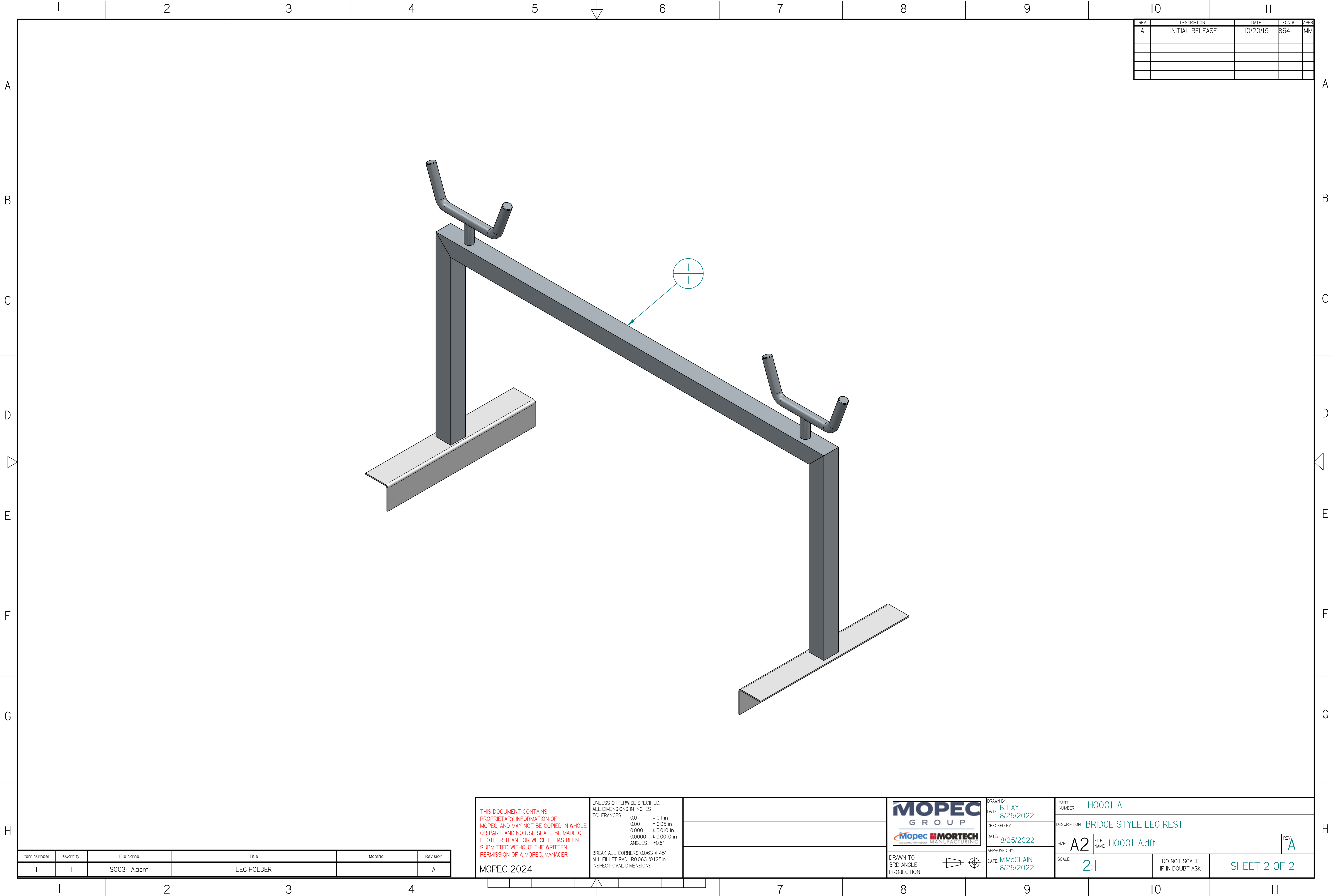


DRAWN TO
3RD ANGLE
PROJECTION

DRAWN BY:
DATE: 8/25/2022
CHECKED BY:
DATE: 8/25/2022
APPROVED BY:
DATE: MMcCLAIN 8/25/2022

PART NUMBER: H0001-A
DESCRIPTION: BRIDGE STYLE LEG REST
SIZE: A2
SCALE: 1:3.03
DO NOT SCALE IF IN DOUBT ASK
SHEET 1 OF 2

H0001-A.dft



REV	DESCRIPTION	DATE	ECN #	APPR
A	INITIAL RELEASE	10/20/15	864	MM

Item Number	Quantity	File Name	Title	Material	Revision
I	I	S003I-A.asm	LEG HOLDER		A

THIS DOCUMENT CONTAINS
PROPRIETARY INFORMATION OF
MOPEC, AND MAY NOT BE COPIED IN WHOLE
OR PART, AND NO USE SHALL BE MADE OF
IT OTHER THAN FOR WHICH IT HAS BEEN
SUBMITTED WITHOUT THE WRITTEN
PERMISSION OF A MOPEC MANAGER

UNLESS OTHERWISE SPECIFIED:
ALL DIMENSIONS IN INCHES
TOLERANCES

0.0	± 0.1 in
0.00	± 0.05 in
0.000	± 0.010 in
0.0000	± 0.0010 in
ANGLES	± 0.5°

BREAK ALL CORNERS 0.063 X 45°
ALL FILLET RADII R0.063 / 0.125 in
INSPECT OVAL DIMENSIONS

MOPEC 2024

MOPEC
GROUP

MOPEC **MORTECH**
ADVANCED TECHNOLOGY MANUFACTURING

DRAWN TO
3RD ANGLE
PROJECTION

DRAWN BY:
DATE: **B. LAY**
8/25/2022

CHECKED BY:
DATE: ---
8/25/2022

APPROVED BY:
DATE: **MMcCLAIN**
8/25/2022

PART
NUMBER: **H0001-A**

DESCRIPTION: **BRIDGE STYLE LEG REST**

SIZE: **A2** FILE
NAME: **H0001-A.dft**

SCALE: **2:1**

DO NOT SCALE
IF IN DOUBT ASK

REV: **A**

SHEET 2 OF 2

H0001-A.dft