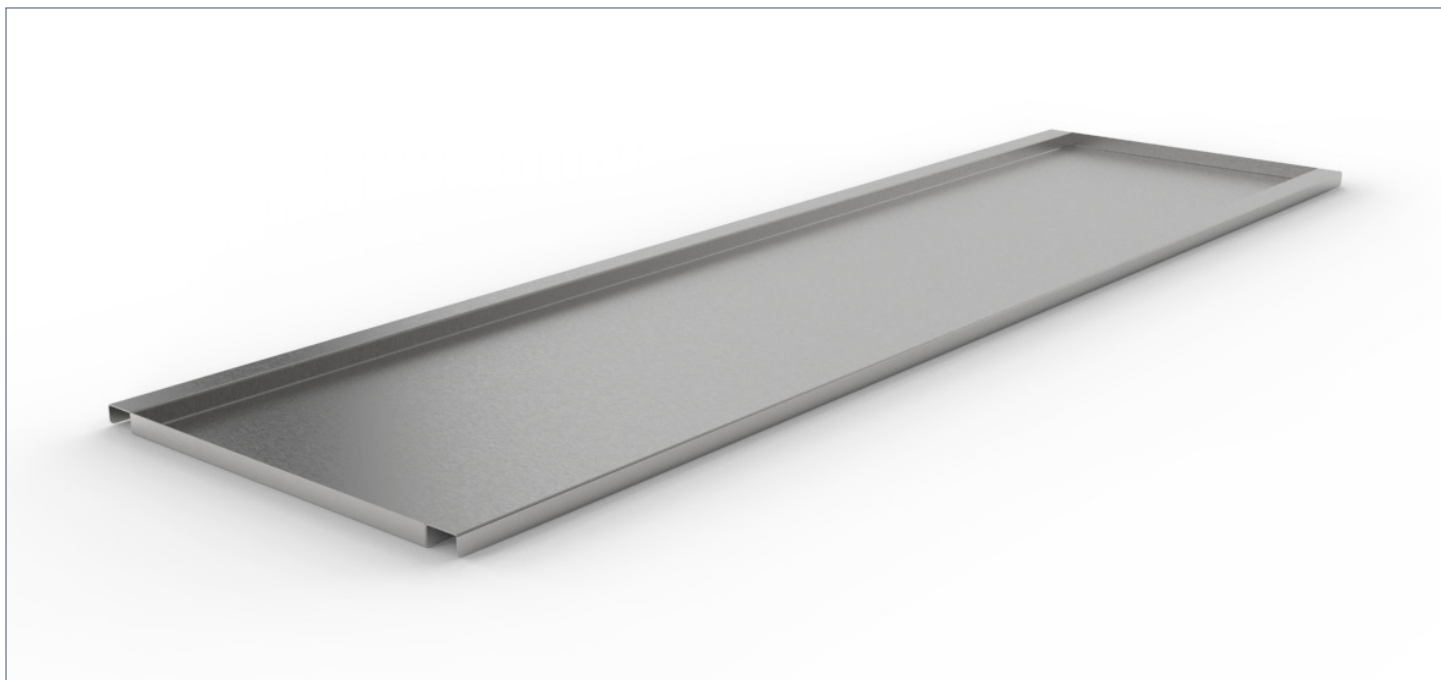


# Full-Length Shelf for Dissection Table



## SPECIFICATIONS

### Construction

- Built to span the full length of the underside of your dissection table for storage

### Materials

- 304 stainless steel construction with a polished No. 4 finish

### Dimensions

- 82.4" L x 23.3" W x 1" H
- Useable area: 82.2" L x 19.6" W

### Compatibility

- HA100
- HA210
- HA400
- HB1400
- HB1410
- HB1500
- HB1510

**MOPEC**  
GROUP

**Mopec**  
ELEVATING PATHOLOGY

**MORTECH**  
MANUFACTURING

[www.mopecgroup.com](http://www.mopecgroup.com)

800.362.8491

800 Tech Row, Madison Heights, MI