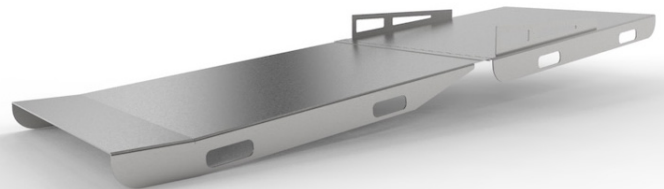


Guardian System Ramps

Designed for seamless integration with Guardian Systems, these ramps provide a smooth transition for wheeled units, improving operational efficiency while upholding safety standards. This practical solution is essential for facilities managing high volumes of sensitive materials or specimens.



IR0002



IR0004

SPECIFICATIONS

Construction

- IR0002: Gradual 11.4-degree slope
- IR0004: Extra-gradual 5.5-degree slope
- Anti-slip grip-tape for safety

Materials

- IR0002: Heavy 7-gage 304 stainless steel construction with a #4 finish
- IR0004: Heavy 7-gage 6061-T6 aircraft aluminum

Dimensions

- 36.7" W x 13.7" H
- IR0002: 58.3" L
- IR0004: 105.3" L

Capacity

- 500 Lbs

Performance

- Allows easy loading of carts, racks, gurneys or lifts
- Sits flush on a 9.5" tall threshold of a standard shipping container

Options & Accessories

- IR0002: 4 ft ramp
- IR0004: 8 ft ramp

Variations

Model No.	Description	Slope	Dimensions
IR0002	Guardian Systems Ramp, 4 ft	11.4 degrees	58.3" L x 36.7" W x 13.7" H
IR0004	Guardian Systems Ramp, 8 ft	5.5 degrees	105.3" L x 36.7" W x 13.7" H

MOPEC
GROUP

mopec
ELEVATING PATHOLOGY

MORTECH
MANUFACTURING

www.mopecgroup.com

800.362.8491

800 Tech Row, Madison Heights, MI