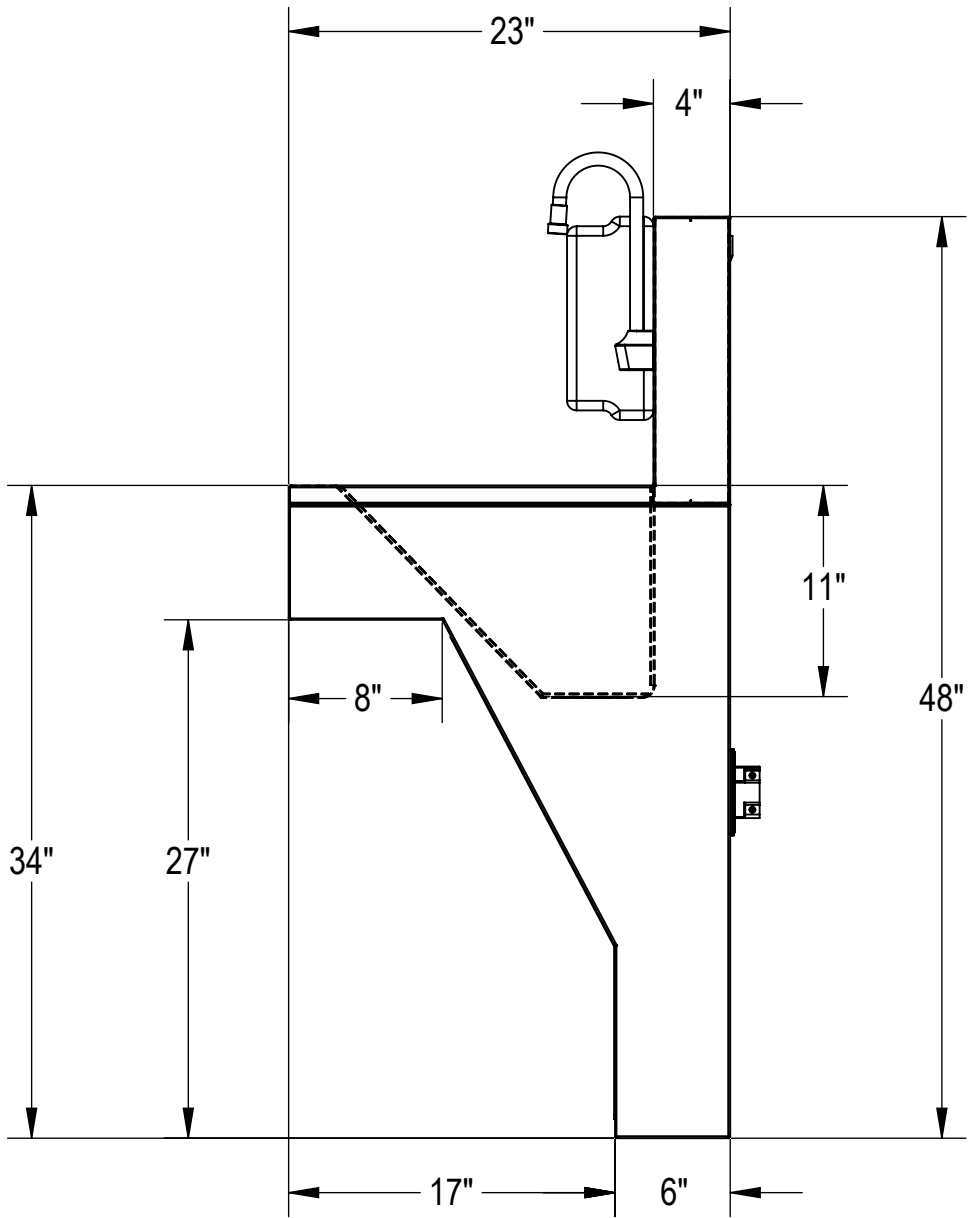
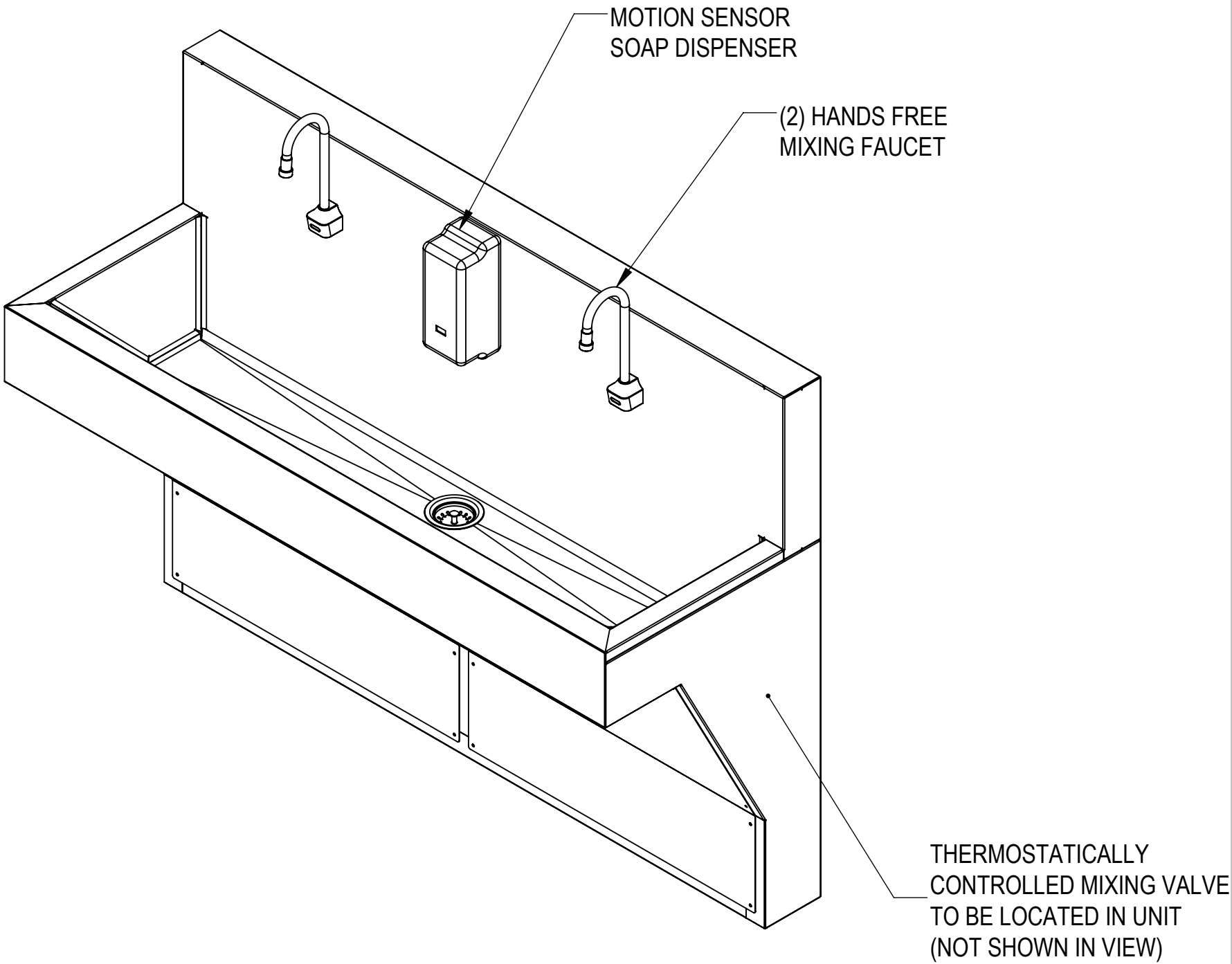
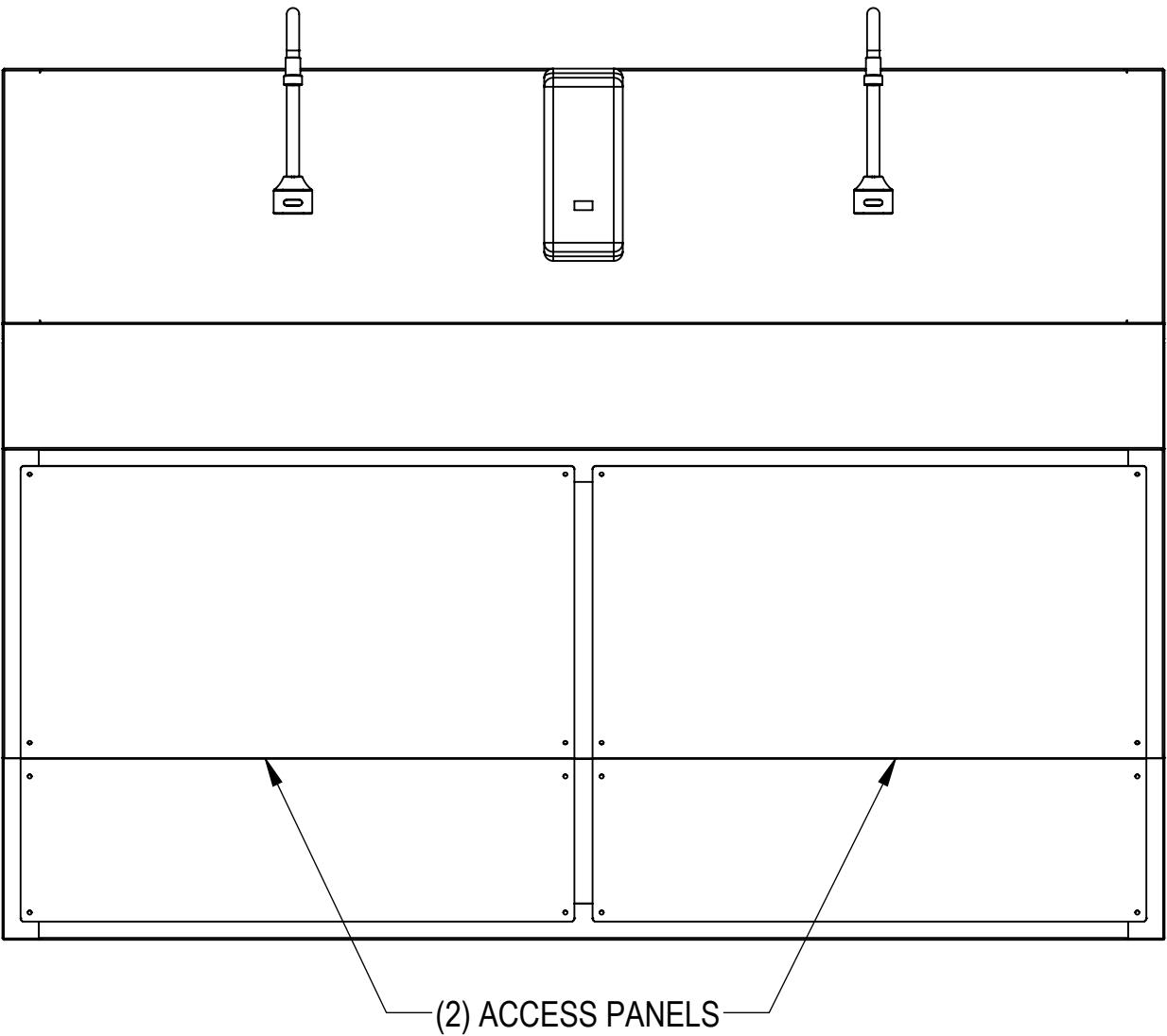
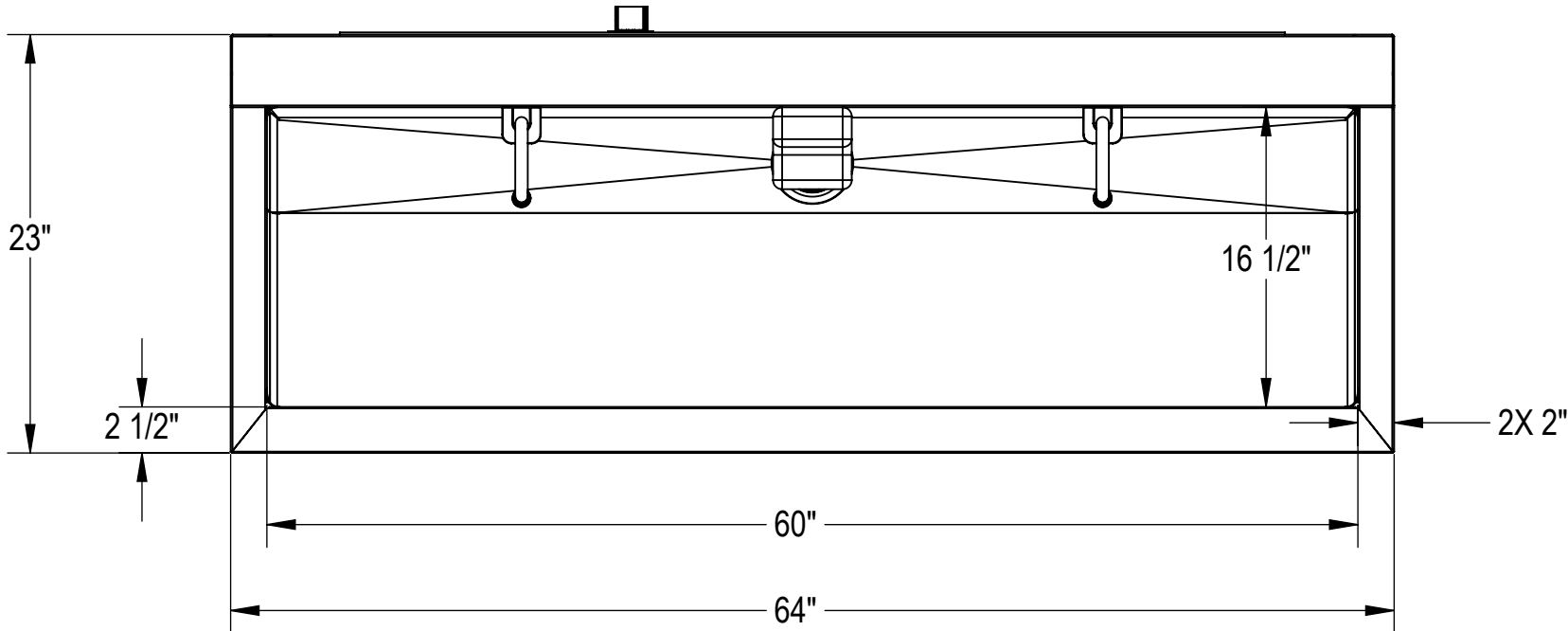


NOTES: UNLESS OTHERWISE SPECIFIED

1. APPLICABLE STANDARDS AND SPECIFICATIONS;
- ASME Y14.5-2009, DIMENSIONING AND TOLERANCING
- ASME Y14.38-2007, ABBREVIATIONS



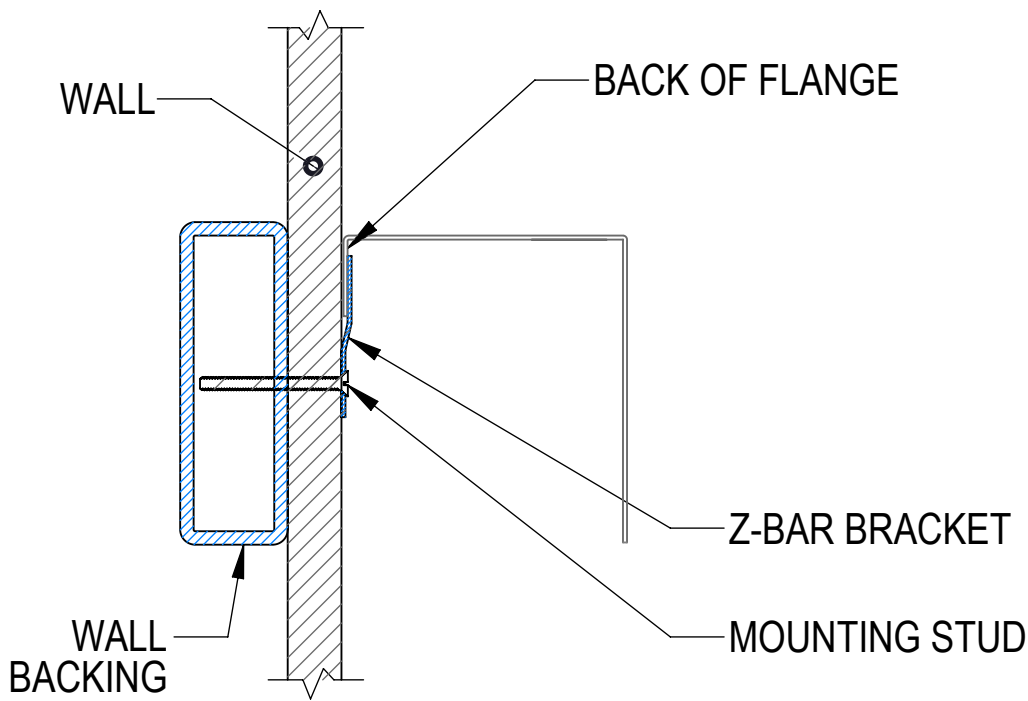
CUSTOMER		APPROVAL		PROPRIETARY			MOPEC GROUP			Mopec			MORTECH		
PROJECT		SIGNATURE		DATE		THIS DOCUMENT AND THE DATE DISCLOSED HEREIN AND HERewith IS NOT TO BE REPRODUCED, USED, OR OTHERWISE DISCLOSED IN WHOLE OR IN PART TO ANYONE WITHOUT WRITTEN AUTHORIZATION FROM MORTECH MFG.			ELEVATING PATHOLOGY MANUFACTURING			TITLE			
CUSTOMER NAME						DO NOT SCALE DRAWING			APPROVALS			DATE			
PROJECT NAME						MATERIAL			DRAWN BY			DWG NO.			
						304 STAINLESS STEEL			LUIS F.			06/12/19			
						FINISH			CHECKED BY			REV.			
						#4 SATIN			APPROVED BY			X01			
									SCALE			NEXT ASSY.			
									1:10			SHEET 1 OF 3			

WALL MOUNTING NOTES:

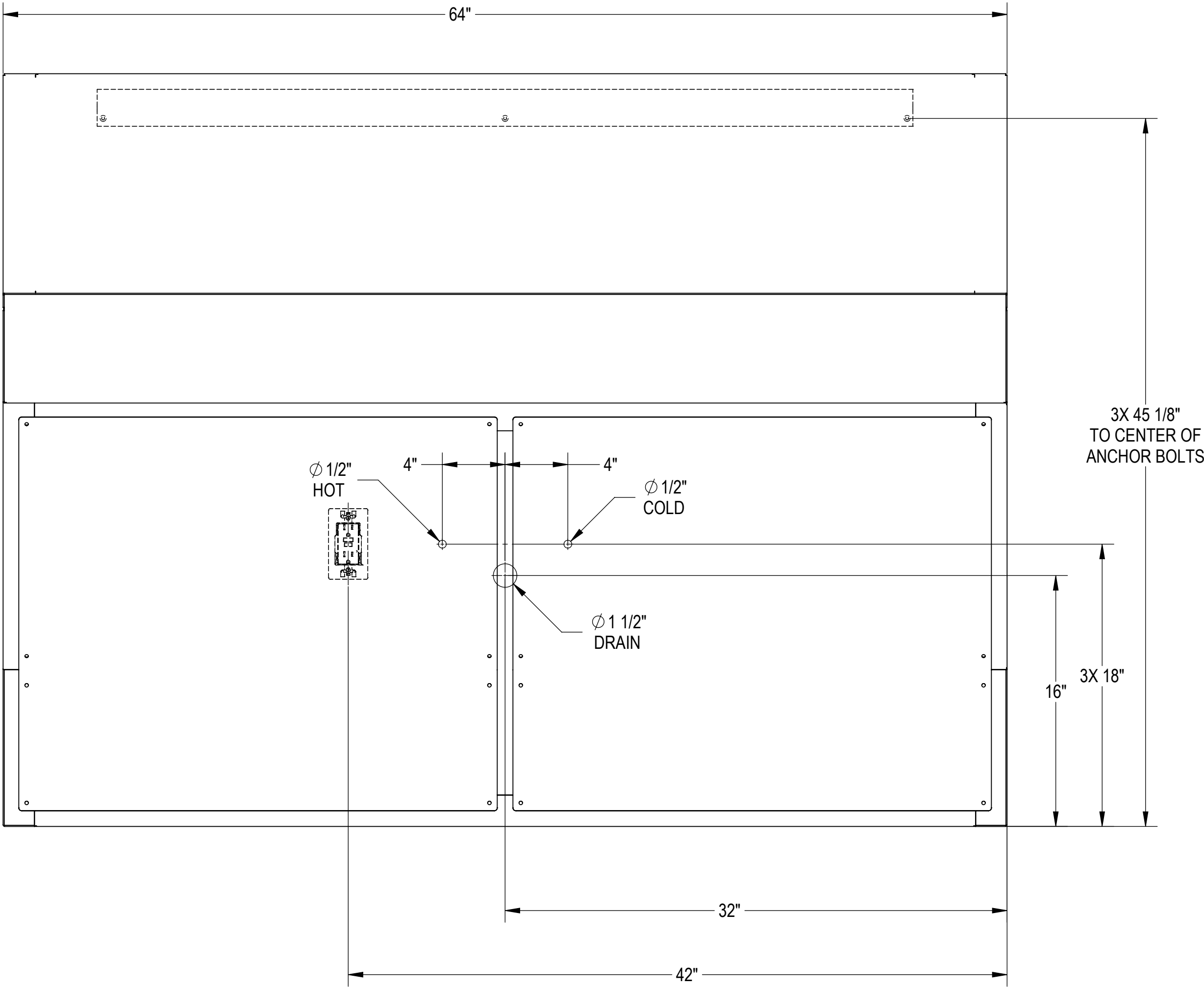
- 1. Z-BAR SHIPPED WITHOUT MOUNTING HOLES FOR ADOPTION TO FIELD CONDITIONS. HOLES TO BE DRILLED BY INSTALLER.
- 2. INSTALL MINIMUM (3) UPPER ANCHORS.
FIRST HOLE: 1" IN FROM SIDE OF Z-BAR.
Z-BAR LENGTH: 24" LONG.
ADDITIONAL ANCHORS CAN BE ADDED AS NEEDED.
- 3. USE MINIMUM 1/4" TEK SCREWS 2" LONG. ADJUST LENGTH PER WALL THICKNESS.
- 4. ANCHORS USED MUST BE FLUSH TO Z-BAR AS MUCH AS POSSIBLE. THEY MUST NOT INTERFERE WITH PLUMBING BEHIND WALL.
- 5. INSTALLATION IS BASED ON ROUGH-IN MOUNTING DETAIL PROVIDED.

UTILITY REQUIREMENT NOTES:

- 1. FLUSH LINES CLEAR BEFORE CONNECTING TO STATION.
- 2. PLUMBER FOR PROVIDE SHUT-OFF VALVES FOR WATER CONNECTIONS AND P-TRAP FOR DRAIN.
- 3. PROVIDE RECEPTACLE TO POWER HANDS FREE FAUCET OR SPECIFY BATTERY POWERED FAUCETS.



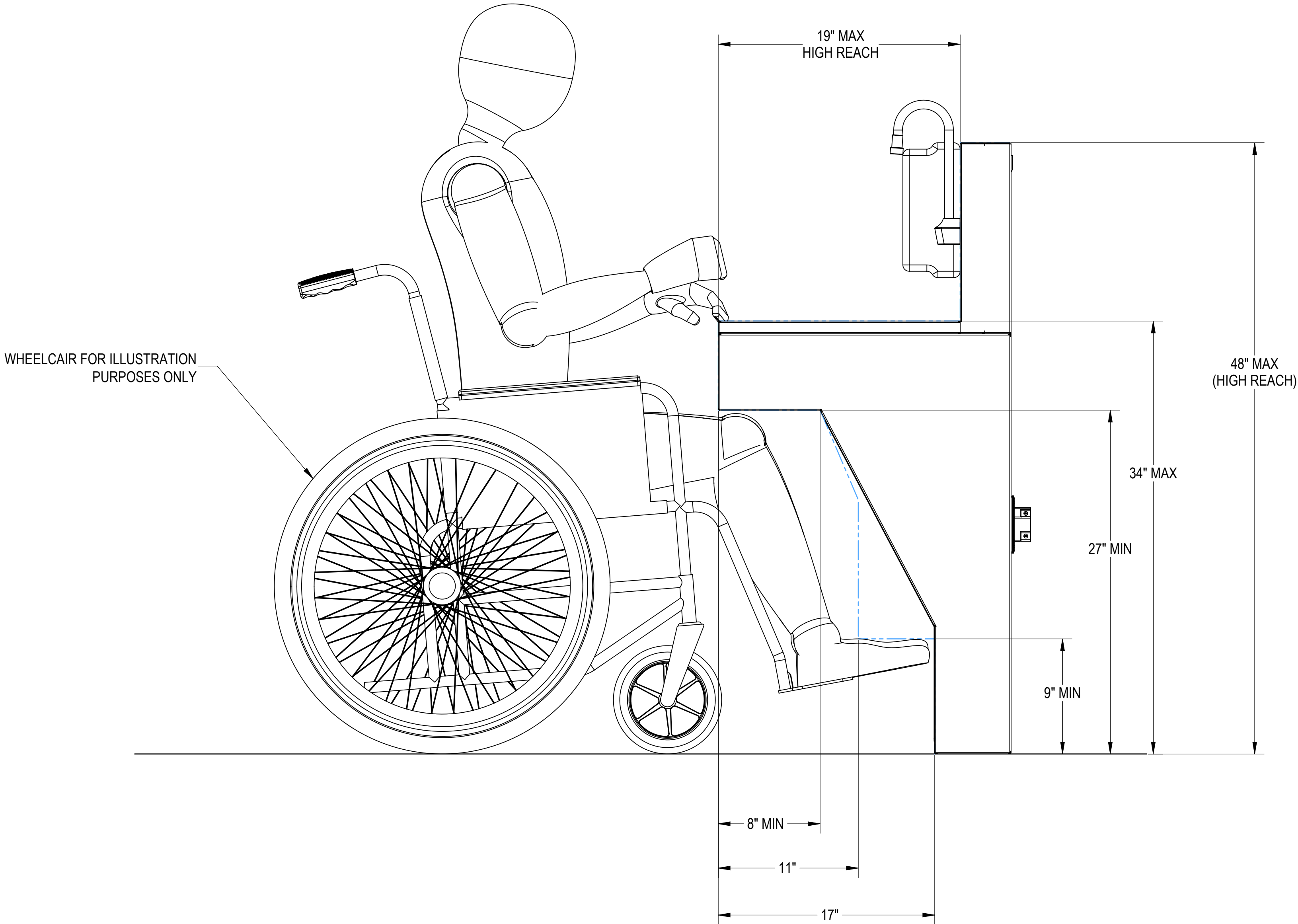
SECTION A-A
SCALE 1 : 4



CUSTOMER		APPROVAL		<div>PROPRIETARY</div> <div>THIS DOCUMENT AND THE DATE DISCLOSED HEREIN AND HEREWITH IS NOT TO BE REPRODUCED, USED, OR OTHERWISE DISCLOSED IN WHOLE OR IN PART TO ANYONE WITHOUT WRITTEN AUTHORIZATION FROM MORTECH MFG.</div>			<div><div>MOPEC</div><div>GROUP</div></div> <div><div>Mopec</div><div>ELEVATING PATHOLOGY</div></div> <div><div>MORTECH</div><div>MANUFACTURING</div></div>				
PROJECT							TITLE				
							MODEL SS102-ADA DOUBLE SCRUB STATION, ADA COMPLAINT ROUGH-IN				
				DO NOT SCALE DRAWING		APPROVALS		DATE			
				MATERIAL		DRAWN BY		06/12/19			
				304 STAINLESS STEEL		LUIS F.					
				FINISH		CHECKED BY					
				#4 SATIN		APPROVED BY					

NOTES: UNLESS OTHERWISE SPECIFIED

1.
- APPLICABLE STANDARDS AND SPECIFICATIONS;
ASMEY14.5-2009, DIMENSIONING AND TOLERANCING
ASME Y14.5-2007, ABBREVIATIONS



CUSTOMER		APPROVAL		PROPRIETARY			<div>MOPEC</div> <div>Mopec</div> <div>MORTECH</div> <div>GROUP</div> <div>#F</div> <div>ELEVATING PATHOLOGY</div> <div>MANUFACTURING</div>				
PROJECT				THIS DOCUMENT AND THE DATE DISCLOSED HEREIN AND HERewith IS NOT TO BE REPRODUCED, USED, OR OTHERWISE DISCLOSED IN WHOLE OR IN PART TO ANYONE WITHOUT WRITTEN AUTHORIZATION FROM MORTECH MFG.			TITLE				
LINE 1				DO NOT SCALE DRAWING			APPROVALS		DATE		
LINE 2				MATERIAL			DRAWN BY		06/12/19		
				304 STAINLESS STEEL			CHECKED BY				
				FINISH			APPROVED BY				
					#4 SATIN			SCALE		1:6	
								NEXT ASSY.		SHEET 3 OF 3	
								REV.		X01	
								SS102-ADA-AP			
								MODEL SS102-ADA			
								DOUBLE SCRUB STATION, ADA COMPLAINT			
								ADA CLEARANCES			