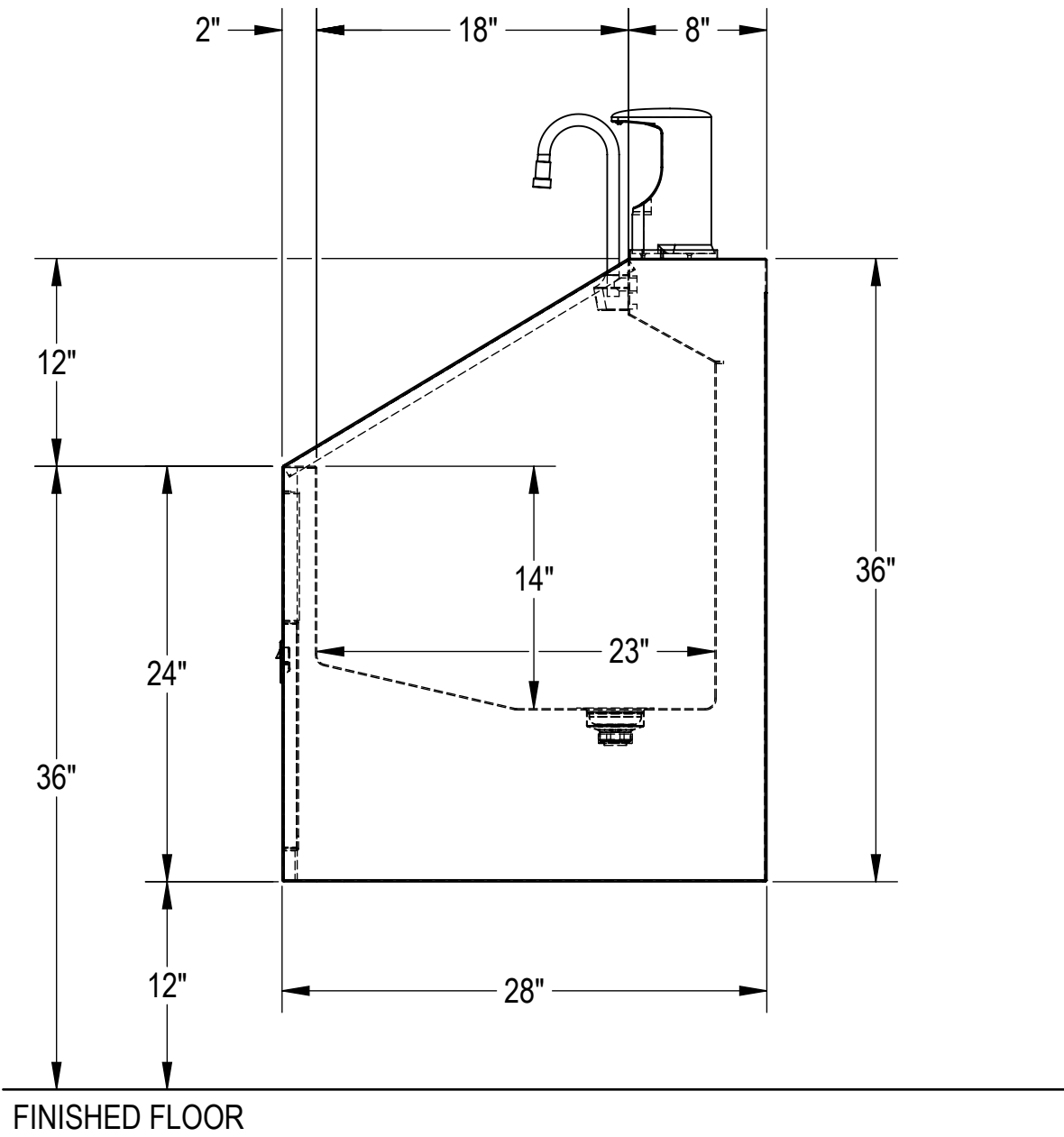
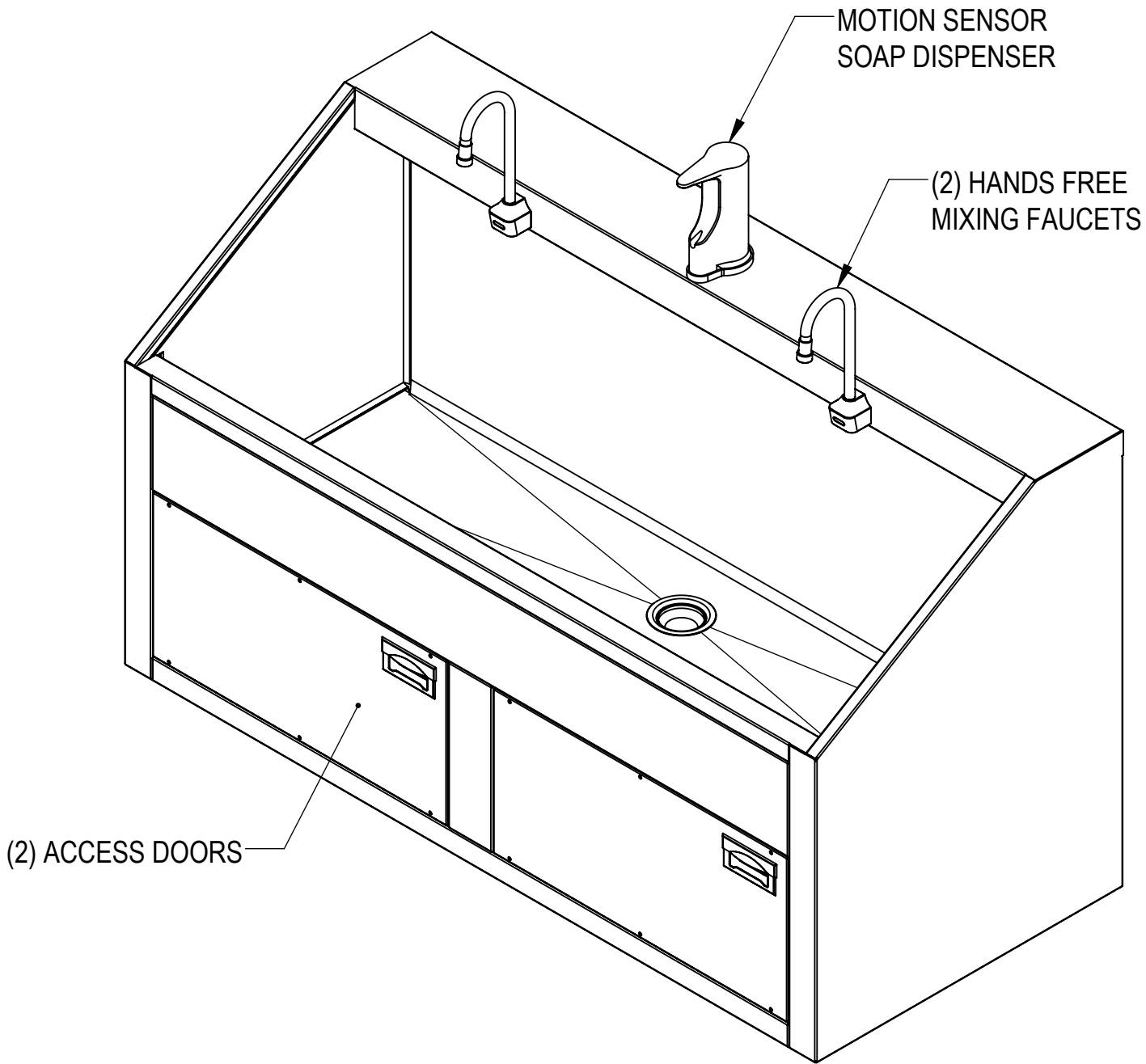
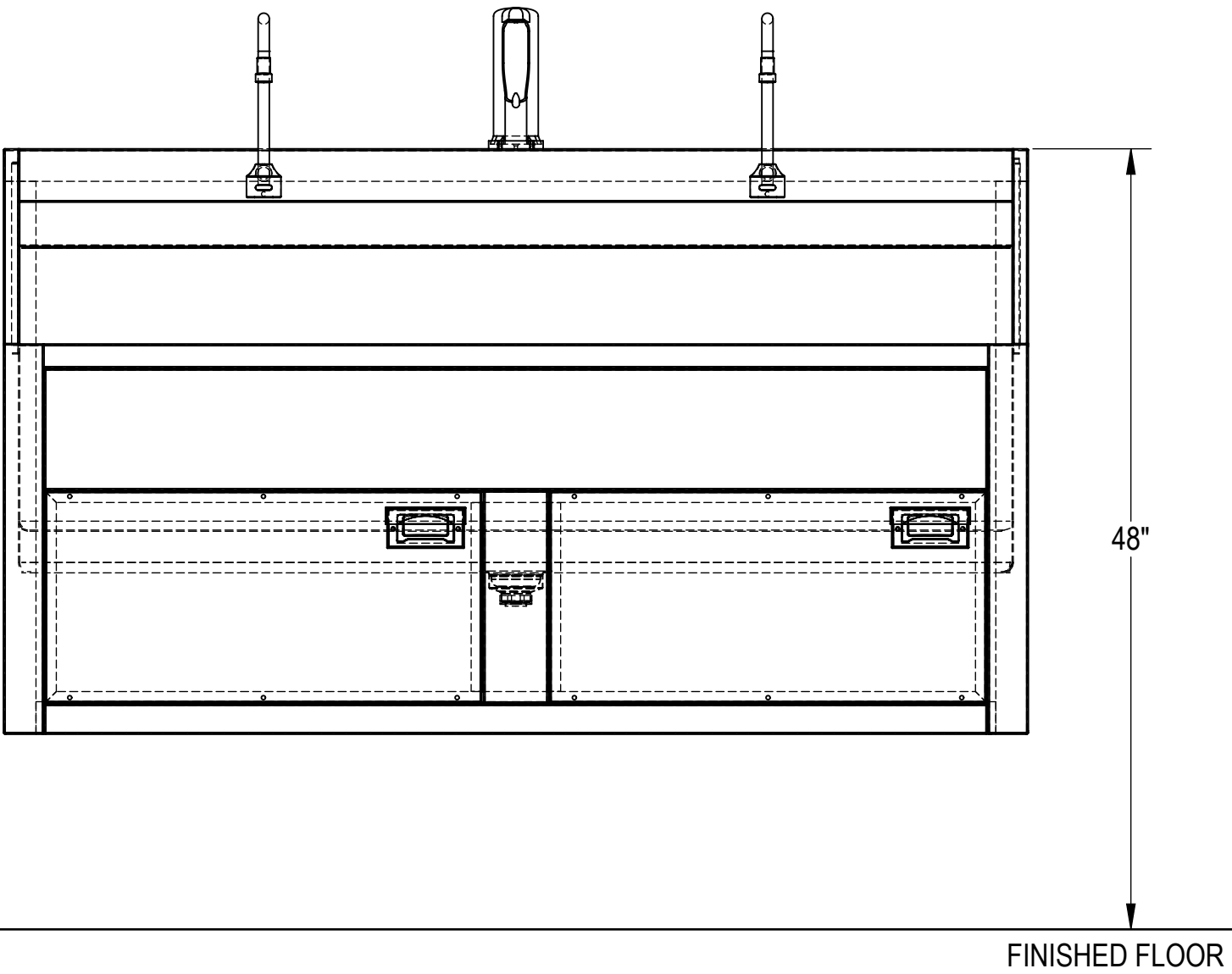
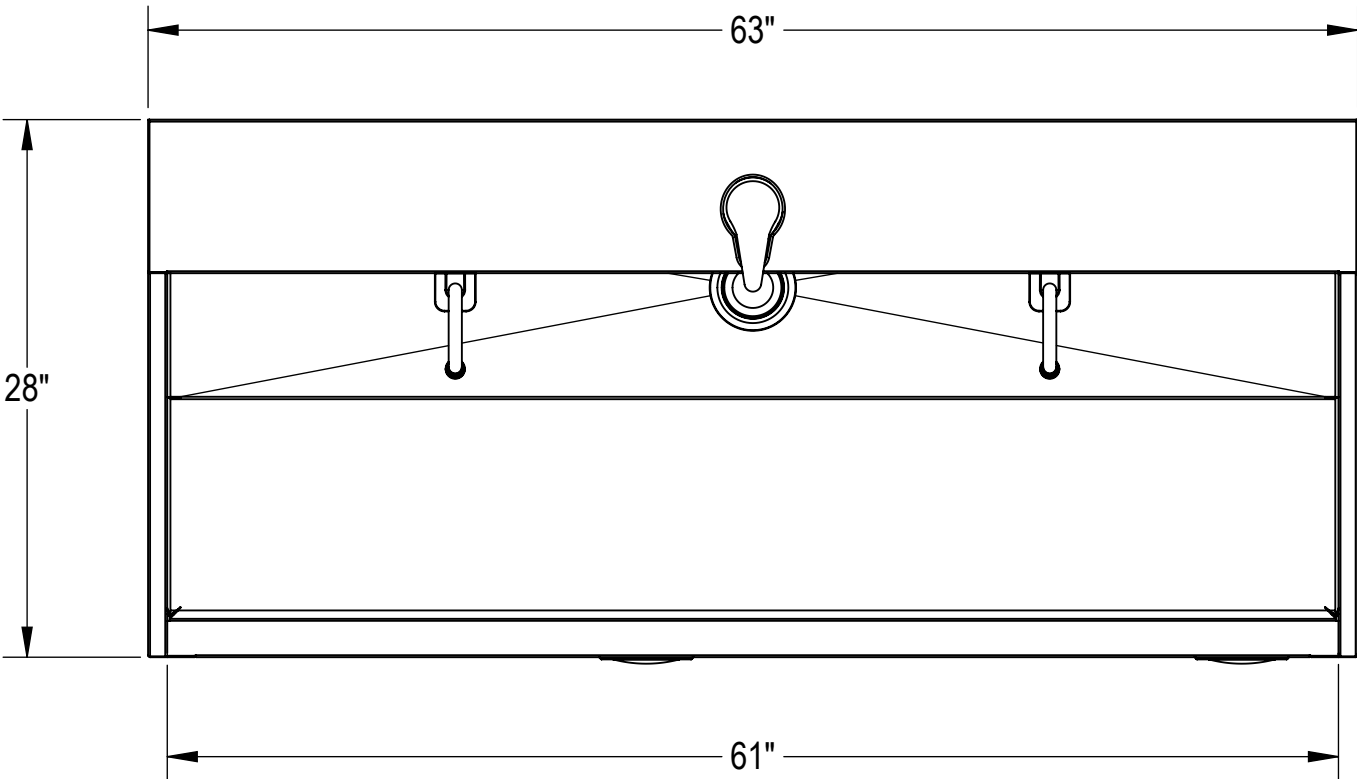





NOTES: UNLESS OTHERWISE SPECIFIED

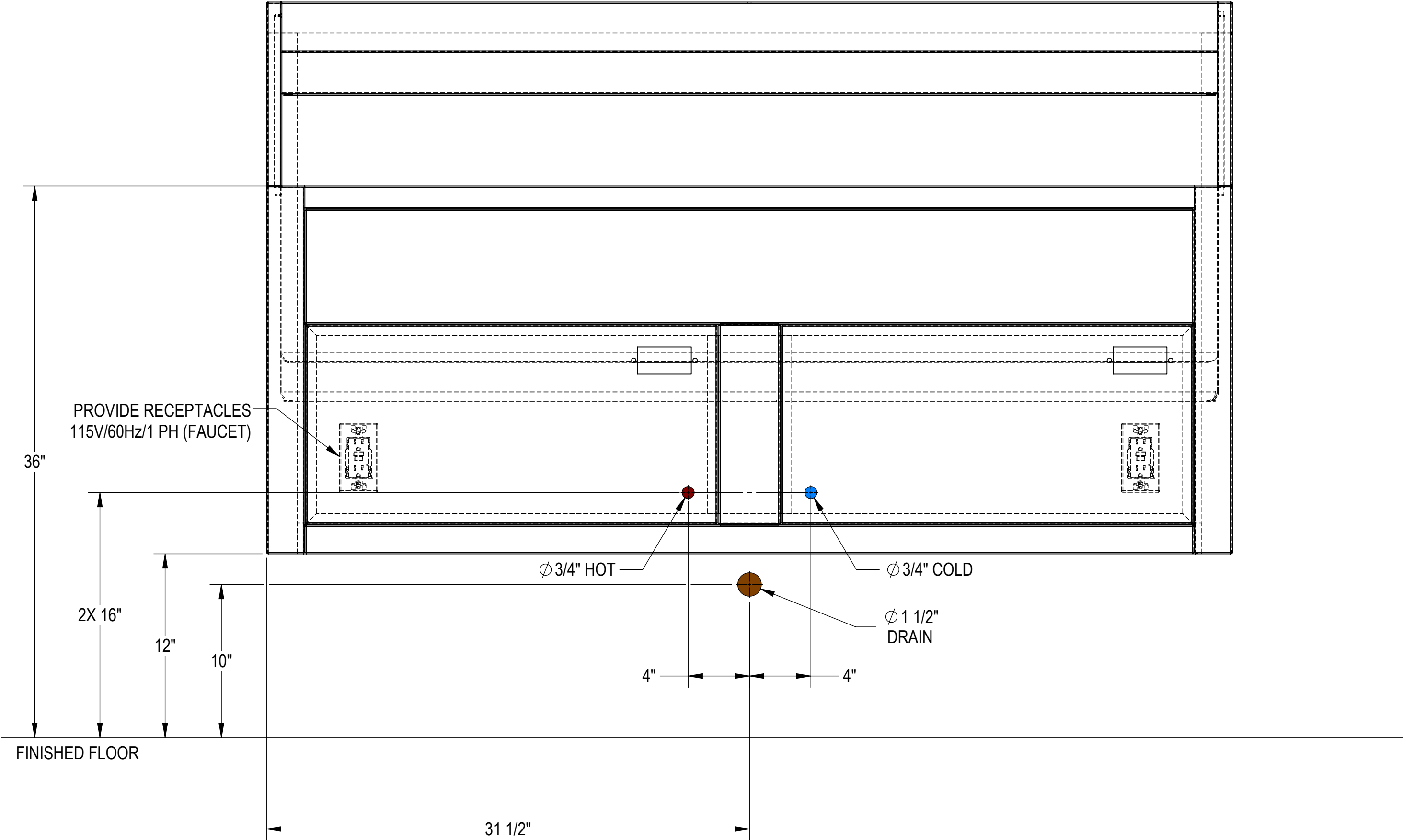
1. APPLICABLE STANDARDS AND SPECIFICATIONS;
ANSI Y14.5M, DIMENSIONS AND TOLERANCES
ANSI Y1.1, ABBREVIATIONS



CUSTOMER		APPROVAL		PROPRIETARY THIS DOCUMENT AND THE DATE DISCLOSED HEREIN AND HEREWIT IS NOT TO BE REPRODUCED, USED, OR OTHERWISE DISCLOSED IN WHOLE OR IN PART TO ANYONE WITHOUT WRITTEN AUTHORIZATION FROM MORTECH MFG.			  																		
PROJECT							TITLE																		
							MODEL SS102																		
							DOUBLE SCRUB STATION, HANDS FREE																		
							SS102AP																		
SIGNATURE		DATE		DO NOT SCALE DRAWING		APPROVALS		DATE		SIZE		DWG NO.		REV.											
				MATERIAL		DRAWN BY		02/27/17		C				X01											
				304 STAINLESS STEEL		ELISEO S.																			
				FINISH		CHECKED BY																			
				#4 SATIN		APPROVED BY						SCALE		1:10		NEXT ASSY.		SHEET		1		OF		3	

UTILITY REQUIREMENT NOTES:

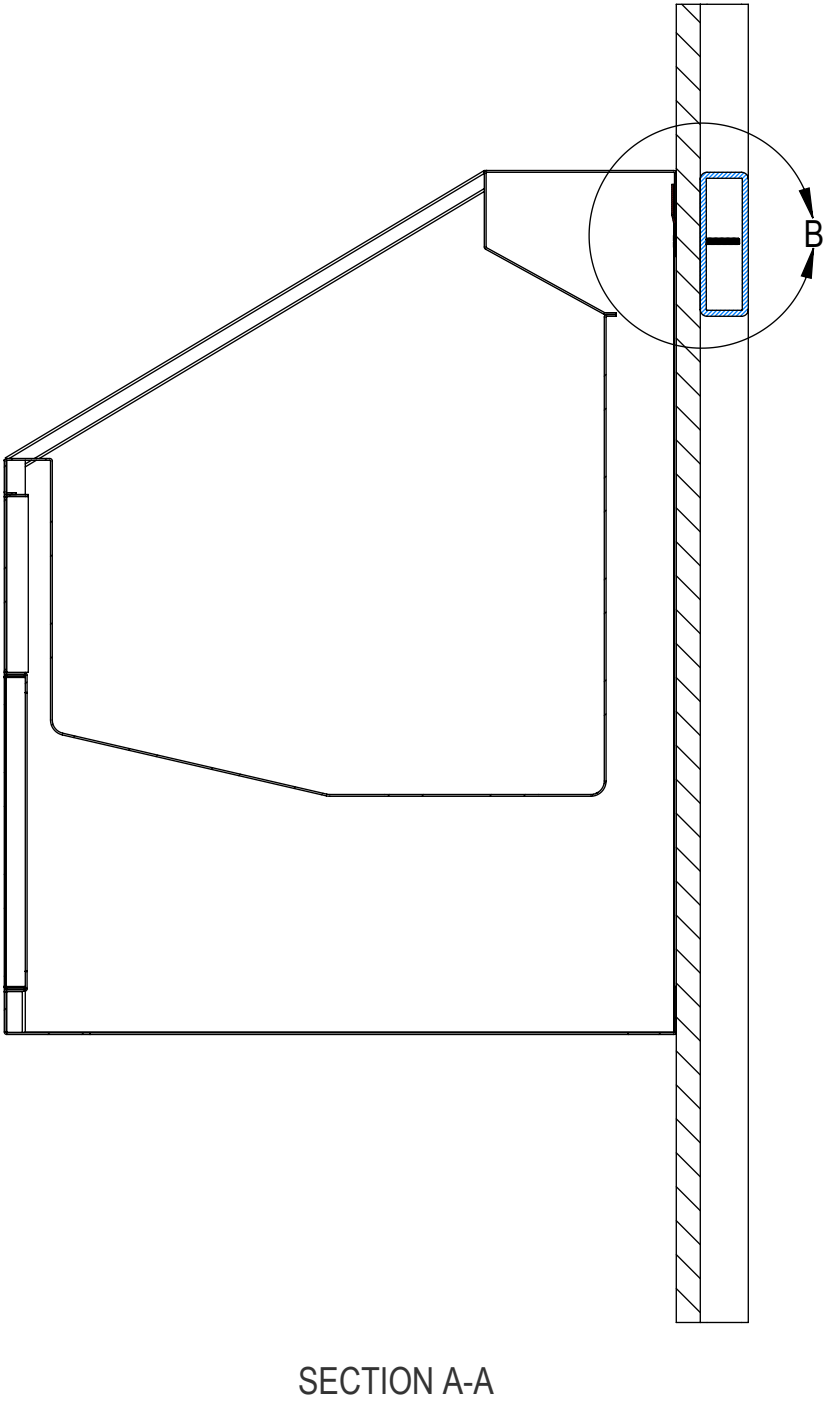
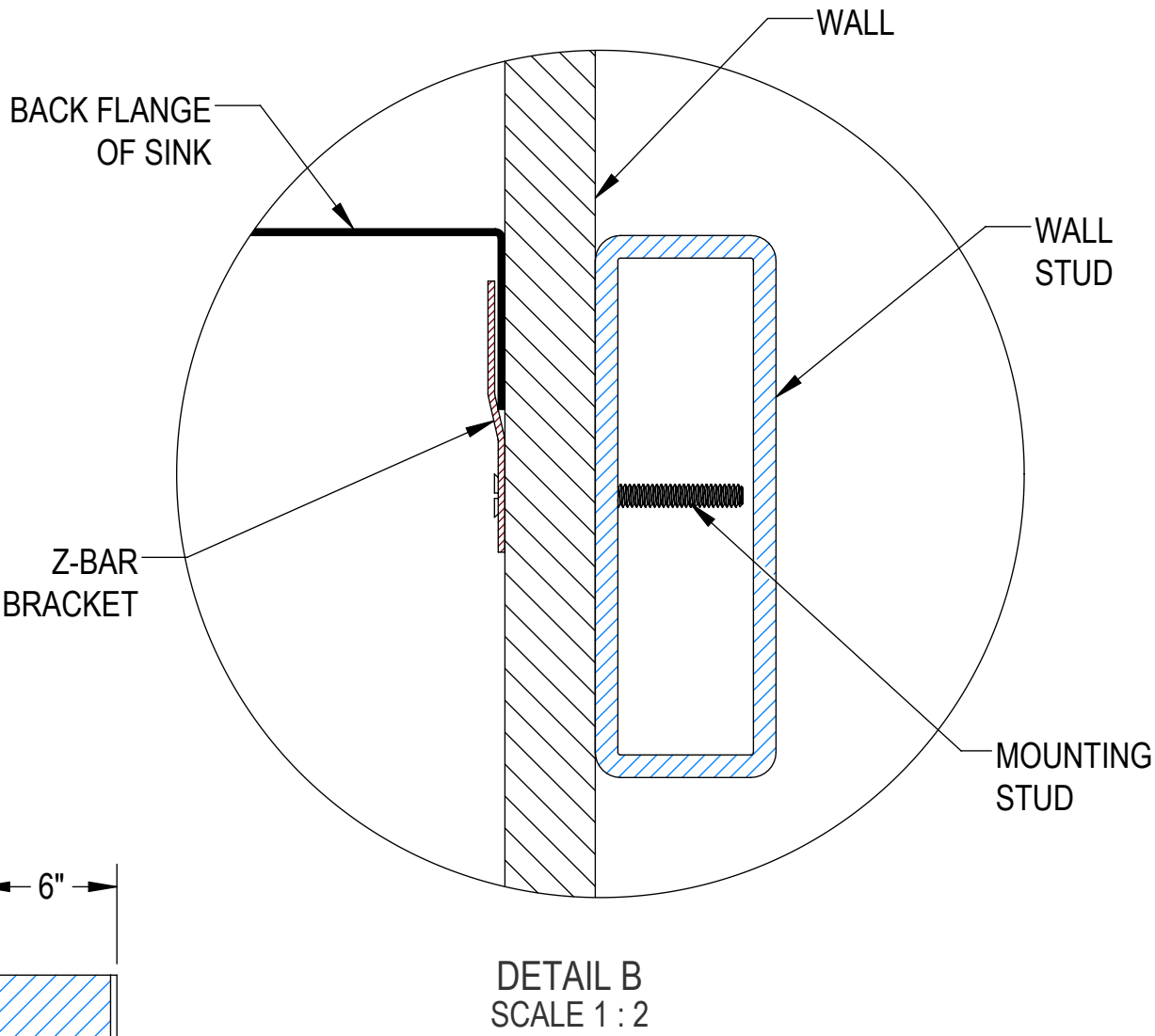
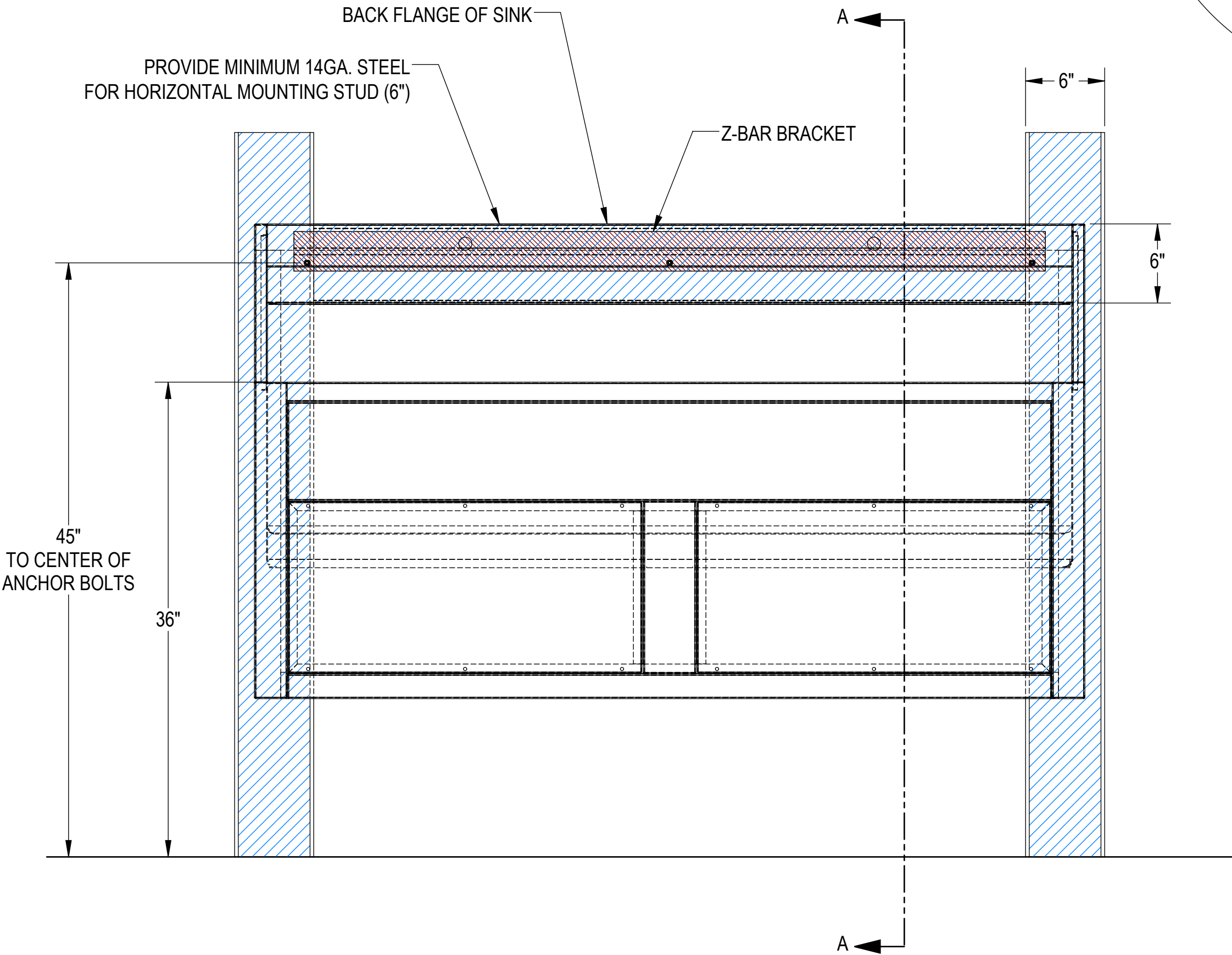
- 1. FLUSH LINES CLEAR BEFORE CONNECTING TO STATION.
- 2. PLUMBER TO PROVIDE SHUT-OFF VALVES FOR WATER CONNECTIONS AND P-TRAP FOR DRAIN.
- 3. PROVIDE RECEPTACLE TO POWER EACH HANDS FREE FAUCET OR SPECIFY BATTERY POWERED FAUCETS.



CUSTOMER		APPROVAL		<div>PROPRIETARY</div> <div>THIS DOCUMENT AND THE DATE DISCLOSED HEREIN AND HEREWITH IS NOT TO BE REPRODUCED, USED, OR OTHERWISE DISCLOSED IN WHOLE OR IN PART TO ANYONE WITHOUT WRITTEN AUTHORIZATION FROM MORTECH MFG.</div>			<div><div><div>MOPEC</div><div>GROUP</div></div><div><div>Mopec</div><div>ELEVATING PATHOLOGY</div></div><div><div>MORTECH</div><div>MANUFACTURING</div></div></div>				
PROJECT							<div>TITLE</div> <div>MODEL SS102</div> <div>DOUBLE SCRUB STATION, HANDS FREE</div> <div>ROUGH-IN</div>				
				DO NOT SCALE DRAWING	APPROVALS		DATE				
				MATERIAL	DRAWN BY	ELISEO S.	02/27/17	SIZE	DWG NO.	REV.	
				304 STAINLESS STEEL	CHECKED BY			C		X01	
		SIGNATURE		DATE	FINISH	APPROVED BY		SCALE	NEXT ASSY.	SHEET	
					#4 SATIN			1:6		2 OF 3	

WALL-MOUNTING NOTES:

- 1. Z-BAR SHIPPED WITHOUT MOUNTING HOLES FOR ADOPTION TO FIELD CONDITIONS. HOLES TO BE DRILLED BY INSTALLER.
- 2. INSTALL 3 ANCHORS AT 27 1/2" ON CENTER.
FIRST HOLE 1" IN FROM SIDE OF Z-BAR
Z-BAR LENGTH: 57"
ADDITIONAL ANCHORS CAN BE ADDED AS NEEDED.
- 3. USE 1/4" TEK SCREWS 2 3/4" LONG
ADJUST LENGTH PER WALL THICKNESS.
- 4. INSTALLATION IS BASED ON ROUGH-IN MOUNTING DETAIL.
- 5. ANCHORS USED MUST BE FLUSH TO Z-BAR AS MUCH AS POSSIBLE. THEY MUST NOT INTERFERE WITH PLUMBING BEHIND WALL.



CUSTOMER		APPROVAL		<div>PROPRIETARY</div> <div>THIS DOCUMENT AND THE DATE DISCLOSED HEREIN AND HEREWIT IS NOT TO BE REPRODUCED, USED, OR OTHERWISE DISCLOSED IN WHOLE OR IN PART TO ANYONE WITHOUT WRITTEN AUTHORIZATION FROM MORTECH MFG.</div>			<div><div>MOPEC GROUP</div><div><div>Mopec</div><div>ELEVATING PATHOLOGY</div></div><div><div>MORTECH</div><div>MANUFACTURING</div></div></div>								
PROJECT							TITLE <div>MODEL SS102</div> <div>DOUBLE SCRUB STATION, HANDS FREE</div> <div>WALL-MOUNTING</div>								
				DO NOT SCALE DRAWING	APPROVALS		DATE		SIZE <div>C</div> <div>DWG NO.</div> <div>SS102AP</div> <div>REV.</div> <div>X01</div>						
				MATERIAL <div>304 STAINLESS STEEL</div>	DRAWN BY <div>ELISEO S.</div>	02/27/17									
				FINISH <div>#4 SATIN</div>	CHECKED BY										
		SIGNATURE		DATE	APPROVED BY				SCALE	1:8	NEXT ASSY.	SHEET	3	OF	3