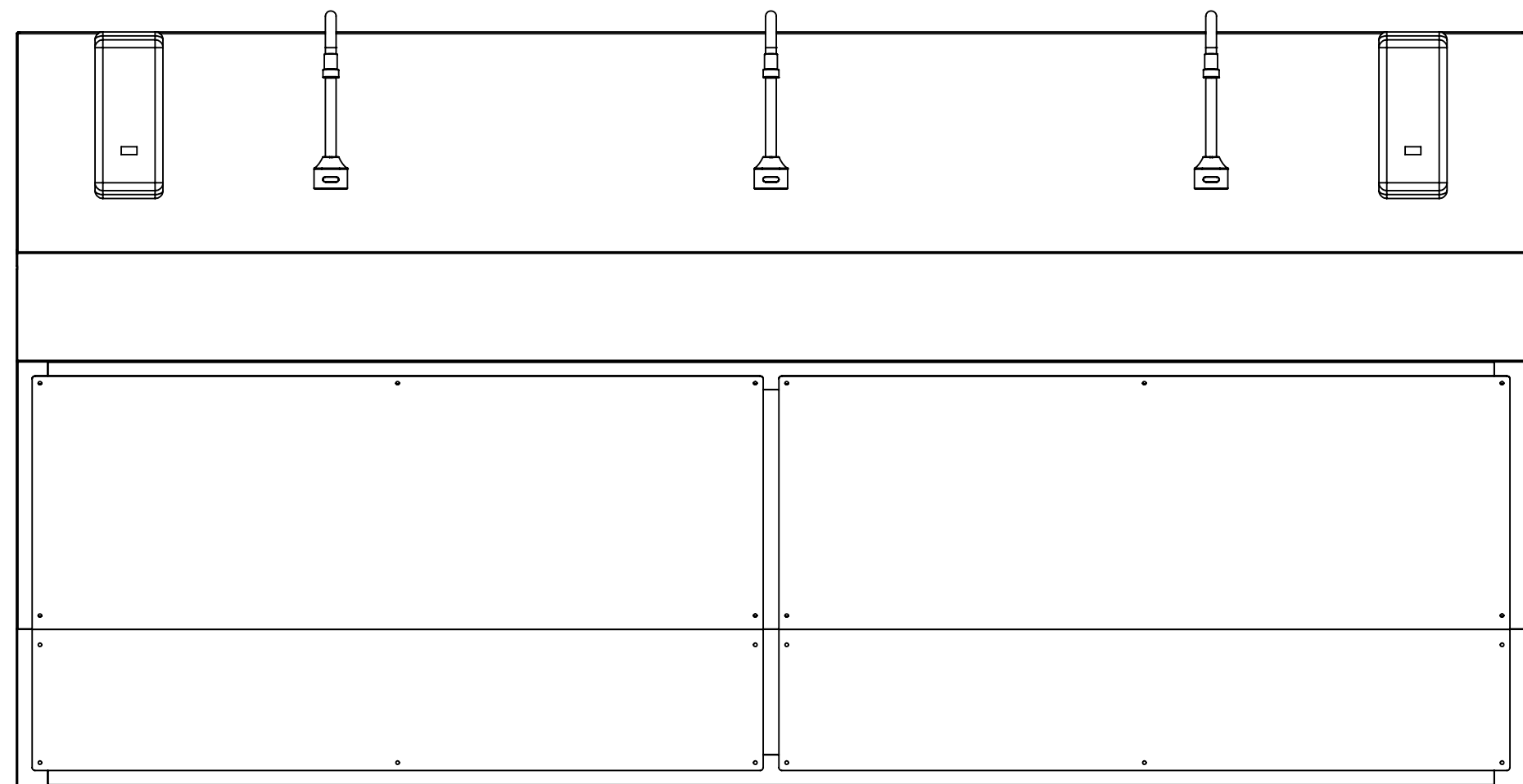
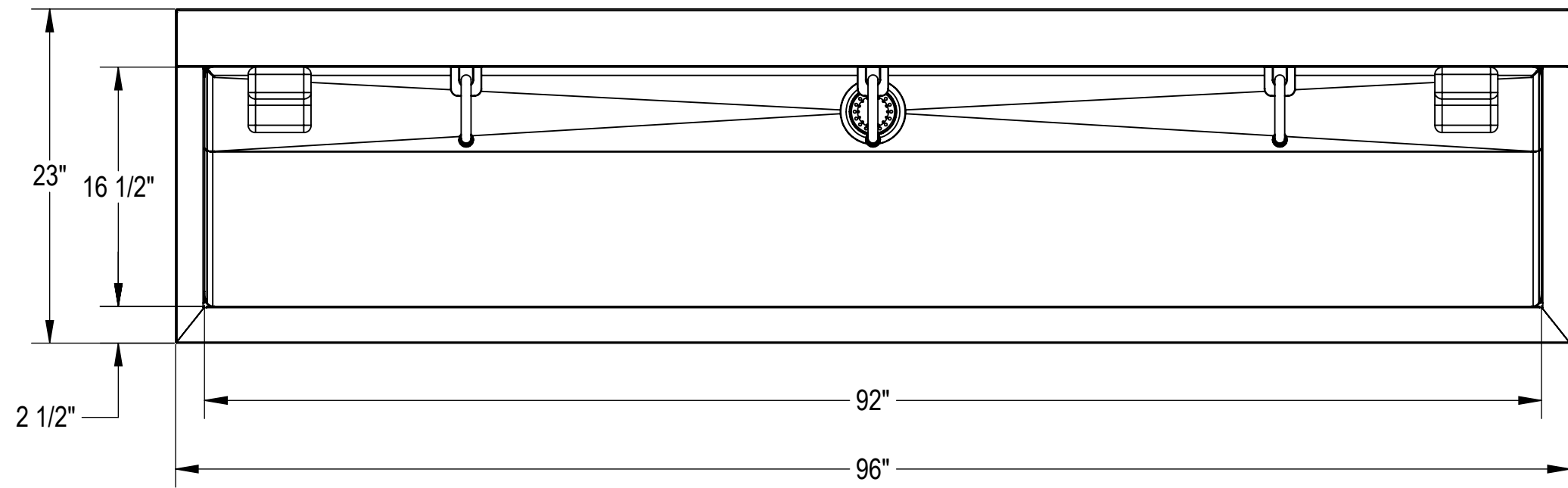


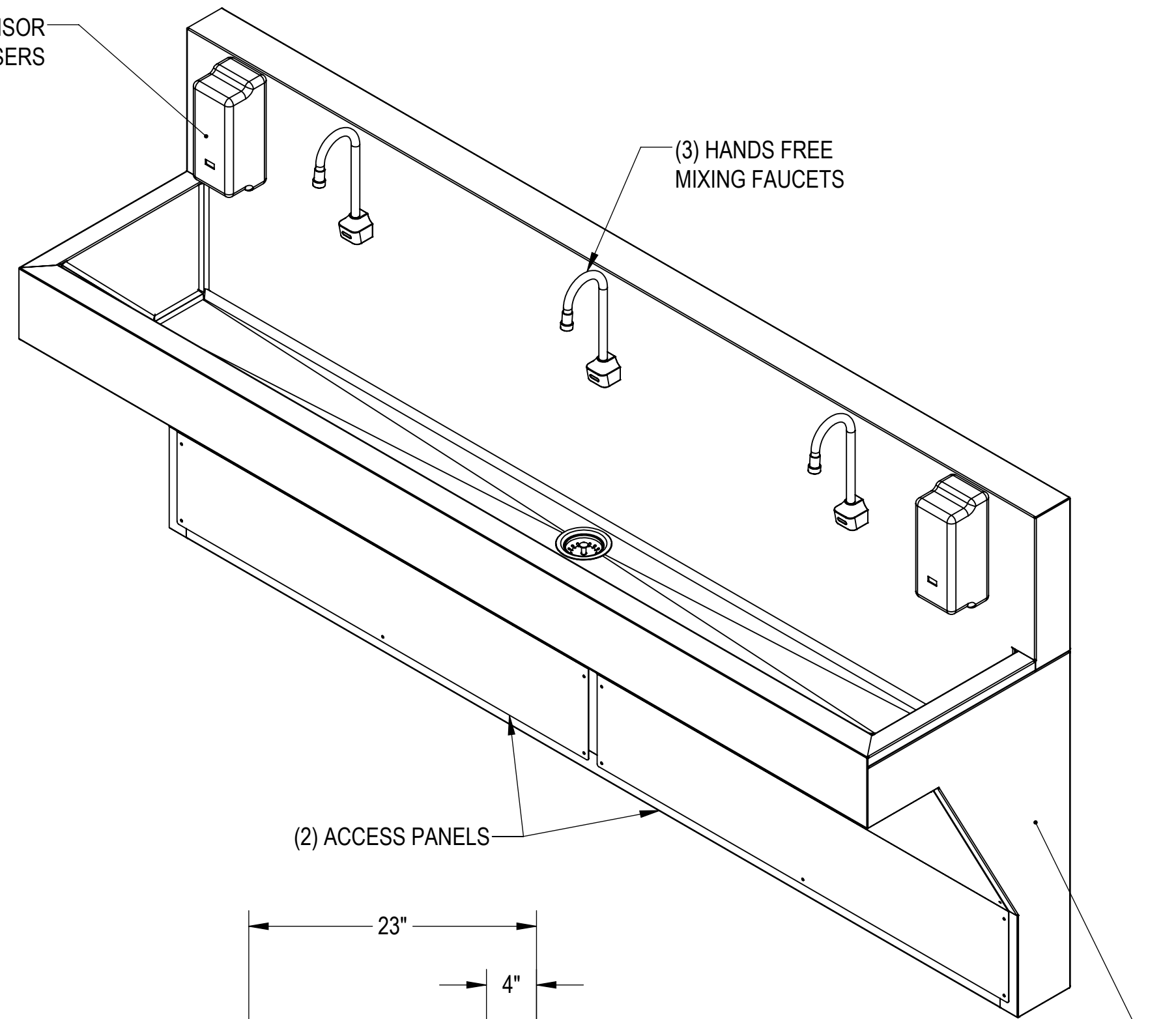
NOTES: UNLESS OTHERWISE SPECIFIED

1. APPLICABLE STANDARDS AND SPECIFICATIONS;  
ASMEY14.5-2009, DIMENSIONING AND TOLERANCING  
ASME Y14.5-2007, ABBREVIATIONS



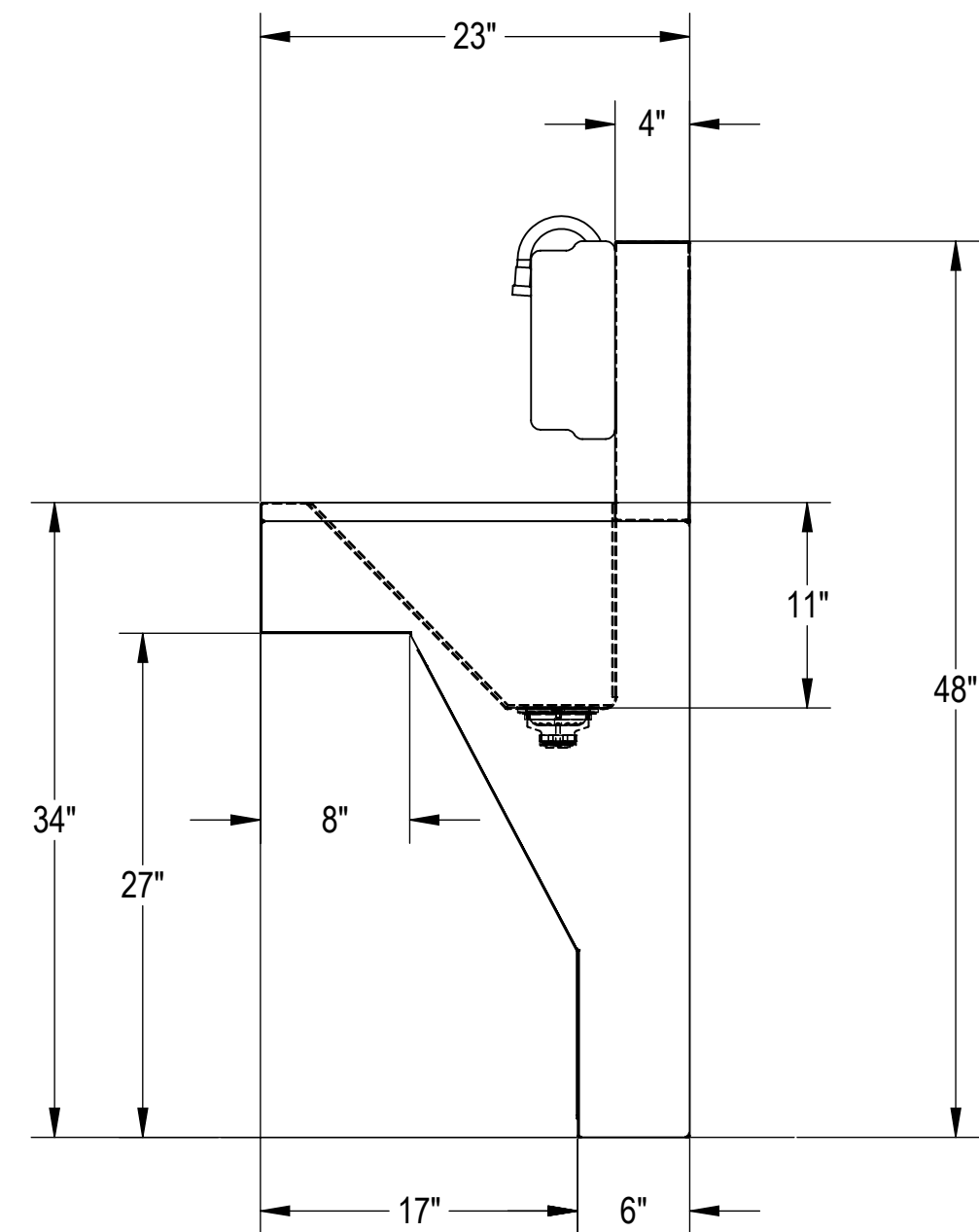
(2) MOTION SENSOR SOAP DISPENSERS

(3) HANDS FREE MIXING FAUCETS



(2) ACCESS PANELS

THERMOSTATICALLY CONTROLLED MIXING VALVE TO BE LOCATED IN UNIT (NOT SHOWN IN VIEW)



CUSTOMER		APPROVAL	
PROJECT		SIGNATURE	
		DATE	

PROPRIETARY		
THIS DOCUMENT AND THE DATE DISCLOSED HEREIN AND HERewith IS NOT TO BE REPRODUCED, USED, OR OTHERWISE DISCLOSED IN WHOLE OR IN PART TO ANYONE WITHOUT WRITTEN AUTHORIZATION FROM MORTECH MFG.		
DO NOT SCALE DRAWING	APPROVALS	DATE
MATERIAL	DRAWN BY	CHECKED BY
304 STAINLESS STEEL	YULISSA G.	1/3/2022
FINISH	APPROVED BY	
#4 SATIN		

MOPEC GROUP		
ELEVATING PATHOLOGY MANUFACTURING		
TITLE		
MODEL SS103-ADA		
TRIPLE SCRUB STATION, ADA COMPLIANT		
SIZE	DWG NO.	REV.
C	SS103-ADA-AP	X01
SCALE	NEXT ASSY.	SHEET
1:10		1 OF 3

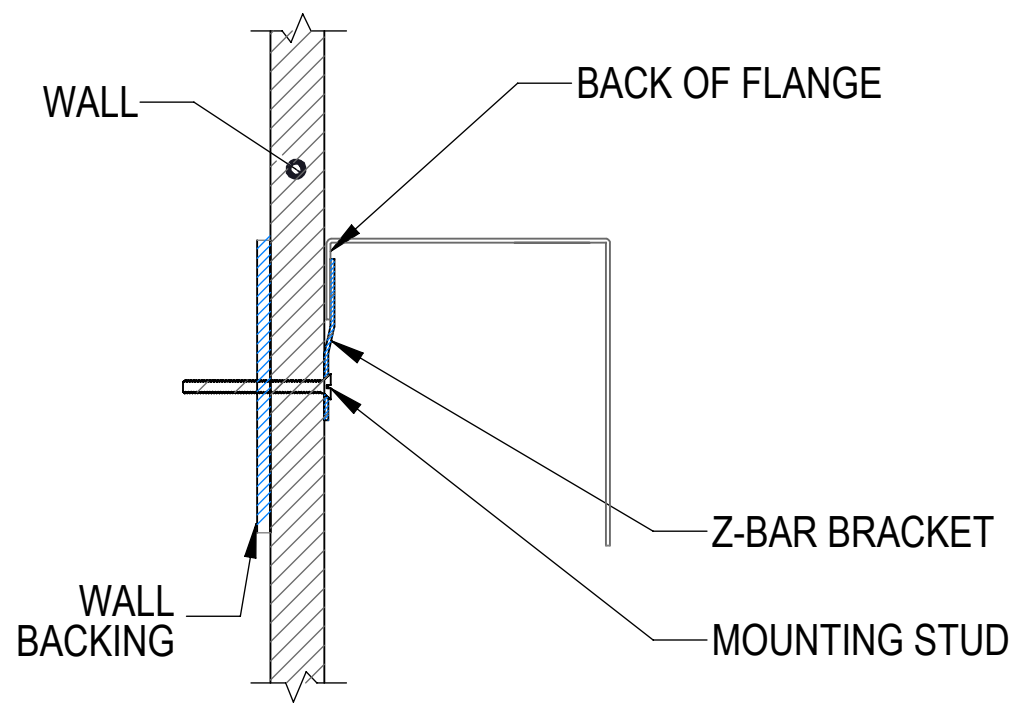
MOPEC GROUP		
ELEVATING PATHOLOGY MANUFACTURING		
TITLE		
MODEL SS103-ADA		
TRIPLE SCRUB STATION, ADA COMPLIANT		
SIZE	DWG NO.	REV.
C	SS103-ADA-AP	X01
SCALE	NEXT ASSY.	SHEET
1:10		1 OF 3

**WALL MOUNTING NOTES:**

1. Z-BAR SHIPPED WITHOUT MOUNTING HOLES FOR ADOPTION TO FIELD CONDITIONS. HOLES TO BE DRILLED BY INSTALLER.
2. INSTALL MINIMUM (5) UPPER ANCHORS.  
FIRST HOLE: 1" IN FROM SIDE OF Z-BAR.  
Z-BAR LENGTH: 88" LONG.  
ADDITIONAL ANCHORS CAN BE ADDED AS NEEDED.
3. USE MINIMUM 1/4" TEK SCREWS 2" LONG. ADJUST LENGTH PER WALL THICKNESS.
4. ANCHORS USED MUST BE FLUSH TO Z-BAR AS MUCH AS POSSIBLE. THEY MUST NOT INTERFERE WITH PLUMBING BEHIND WALL.
5. INSTALLATION IS BASED ON ROUGH-IN MOUNTING DETAIL PROVIDED.

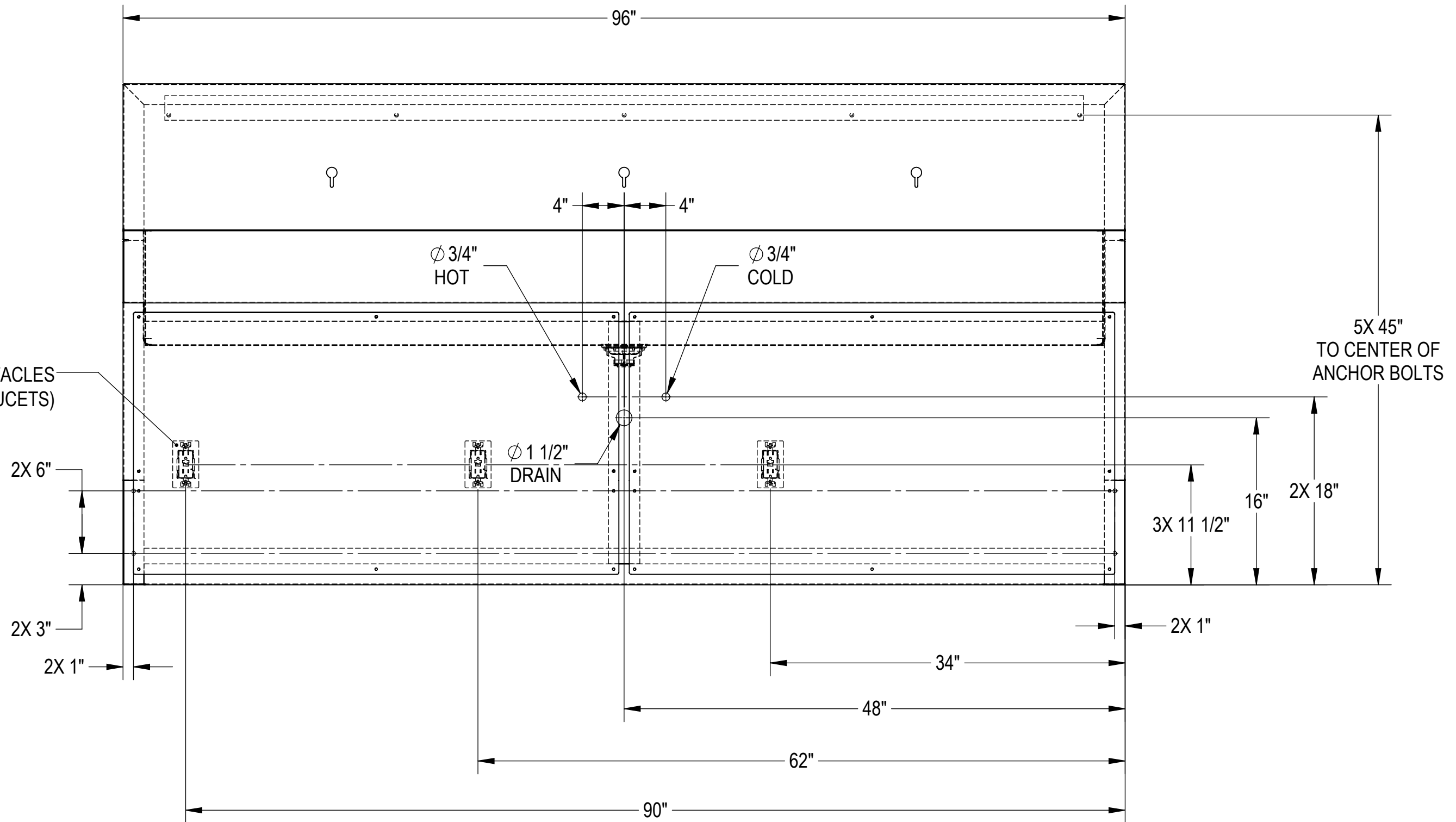
**UTILITY REQUIREMENT NOTES:**



1. FLUSH LINES CLEAR BEFORE CONNECTING TO STATION.
2. PLUMBER FOR PROVIDE SHUT-OFF VALVES FOR WATER CONNECTIONS AND P-TRAP FOR DRAIN.
3. PROVIDE RECEPTACLES TO POWER EACH HANDS FREE FAUCETS OR SPECIFY BATTERY POWERED FAUCETS.



SECTION A-A  
SCALE 1 : 4

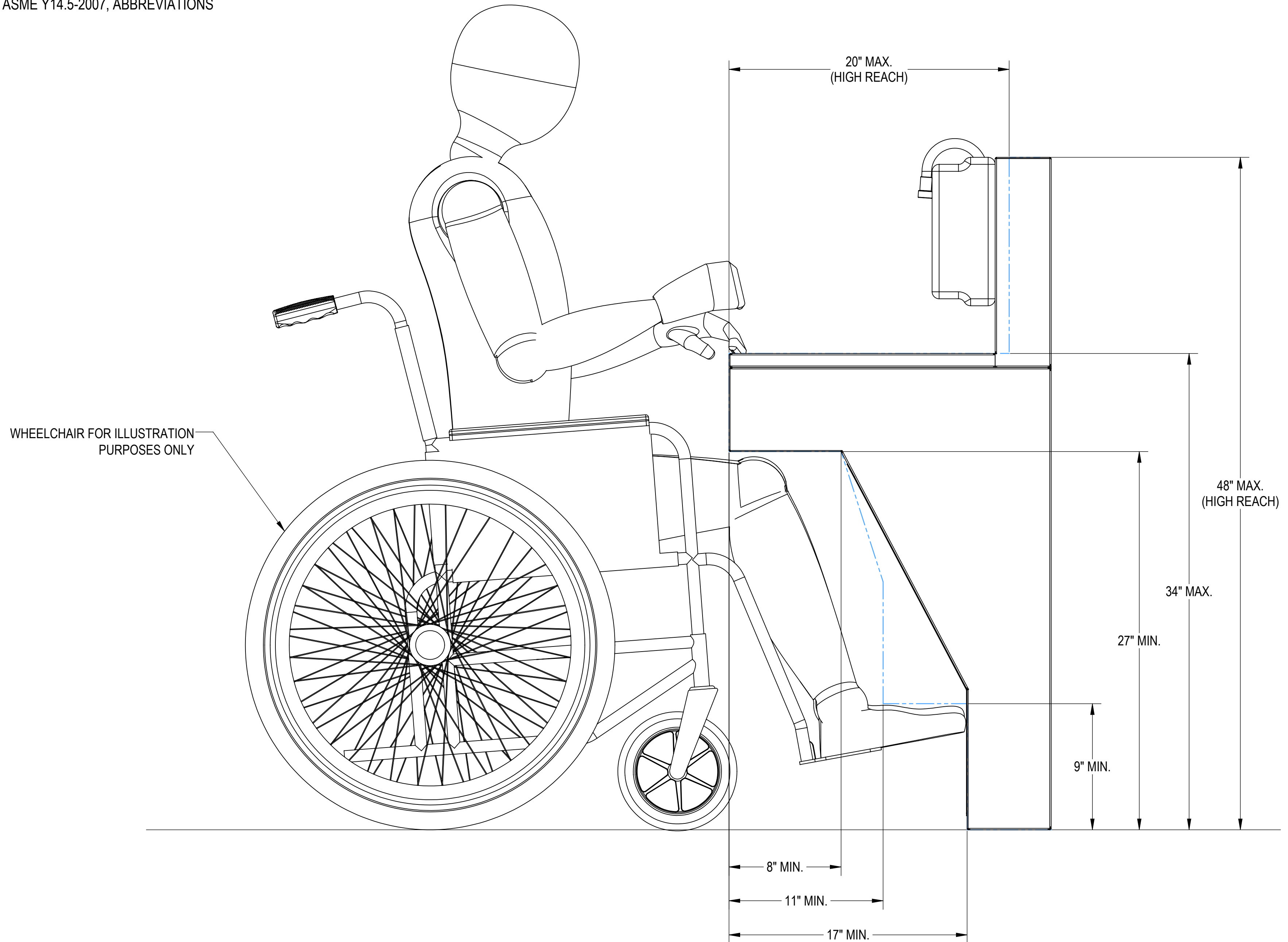
PROVIDE (3) RECEPTACLES  
115V/60Hz/1 PH (FOR FAUCETS)



CUSTOMER		APPROVAL		<p style="text-align: center;"><b>PROPRIETARY</b></p> <p style="text-align: center;">THIS DOCUMENT AND THE DATE DISCLOSED HEREIN AND HEREWITH IS NOT TO BE REPRODUCED, USED, OR OTHERWISE DISCLOSED IN WHOLE OR IN PART TO ANYONE WITHOUT WRITTEN AUTHORIZATION FROM MORTECH MFG.</p>			 																
PROJECT		SIGNATURE		DATE	<table border="1"> <tr> <td>DO NOT SCALE DRAWING</td> <td>APPROVALS</td> <td>DATE</td> </tr> <tr> <td>MATERIAL</td> <td>DRAWN BY</td> <td>1/3/2022</td> </tr> <tr> <td>304 STAINLESS STEEL</td> <td>YULISSA G.</td> <td></td> </tr> <tr> <td>FINISH</td> <td>CHECKED BY</td> <td></td> </tr> <tr> <td>#4 SATIN</td> <td>APPROVED BY</td> <td></td> </tr> </table>	DO NOT SCALE DRAWING	APPROVALS	DATE	MATERIAL	DRAWN BY	1/3/2022	304 STAINLESS STEEL	YULISSA G.		FINISH	CHECKED BY		#4 SATIN	APPROVED BY		<p style="text-align: center;">TITLE</p> <p style="text-align: center;"><b>MODEL SS103-ADA</b></p> <p style="text-align: center;"><b>TRIPLE SCRUB STATION, ADA COMPLIANT</b></p> <p style="text-align: center;"><b>ROUGH-INS</b></p>		
DO NOT SCALE DRAWING	APPROVALS	DATE																					
MATERIAL	DRAWN BY	1/3/2022																					
304 STAINLESS STEEL	YULISSA G.																						
FINISH	CHECKED BY																						
#4 SATIN	APPROVED BY																						
					<table border="1"> <tr> <td>SIZE</td> <td>DWG NO.</td> <td>REV.</td> </tr> <tr> <td>C</td> <td>SS103-ADA-AP</td> <td>X01</td> </tr> <tr> <td>SCALE</td> <td>NEXT ASSY.</td> <td>SHEET</td> </tr> <tr> <td>1:10</td> <td></td> <td>2 OF 3</td> </tr> </table>	SIZE	DWG NO.	REV.	C	SS103-ADA-AP	X01	SCALE	NEXT ASSY.	SHEET	1:10		2 OF 3						
SIZE	DWG NO.	REV.																					
C	SS103-ADA-AP	X01																					
SCALE	NEXT ASSY.	SHEET																					
1:10		2 OF 3																					

**NOTES: UNLESS OTHERWISE SPECIFIED**

1. APPLICABLE STANDARDS AND SPECIFICATIONS;  
ASMEY14.5-2009, DIMENSIONING AND TOLERANCING  
ASME Y14.5-2007, ABBREVIATIONS



CUSTOMER		APPROVAL		<p style="text-align: center;"><b>PROPRIETARY</b></p> <p style="text-align: center;">THIS DOCUMENT AND THE DATE DISCLOSED HEREIN AND HEREWITH IS NOT TO BE REPRODUCED, USED, OR OTHERWISE DISCLOSED IN WHOLE OR IN PART TO ANYONE WITHOUT WRITTEN AUTHORIZATION FROM MORTECH MFG.</p>							
PROJECT		SIGNATURE					DATE		<p style="text-align: center;">ELEVATING PATHOLOGY MANUFACTURING</p> <p style="text-align: center;"><b>MODEL SS103-ADA</b></p> <p style="text-align: center;">TRIPLE SCRUB STATION, ADA COMPLIANT</p> <p style="text-align: center;">ADA CLEARANCES</p>		
						<p>DO NOT SCALE DRAWING</p> <p>MATERIAL <b>304 STAINLESS STEEL</b></p> <p>FINISH <b>#4 SATIN</b></p>		<p>APPROVALS</p> <p>DRAWN BY YULISSA G.</p> <p>CHECKED BY</p> <p>APPROVED BY</p>		<p>DATE</p> <p>1/3/2022</p>	
						<p>SIZE <b>C</b></p> <p>SCALE 1:5</p>		<p>DWG NO. <b>SS103-ADA-AP</b></p> <p>NEXT ASSY.</p>		<p>REV. <b>X01</b></p> <p>SHEET 3 OF 3</p>	