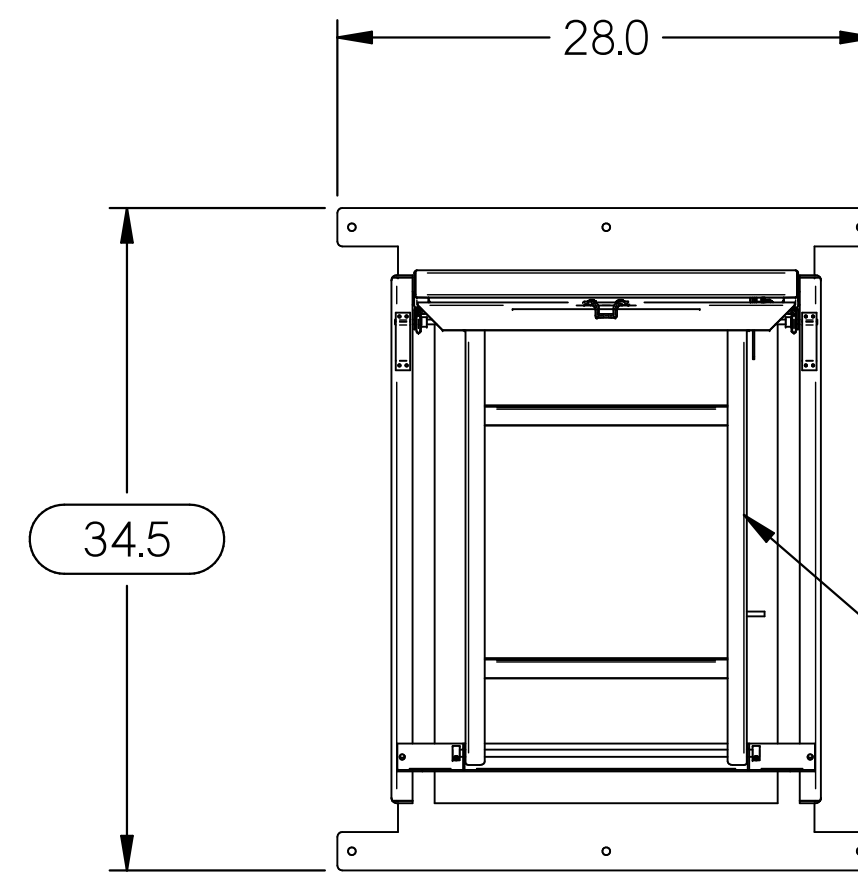
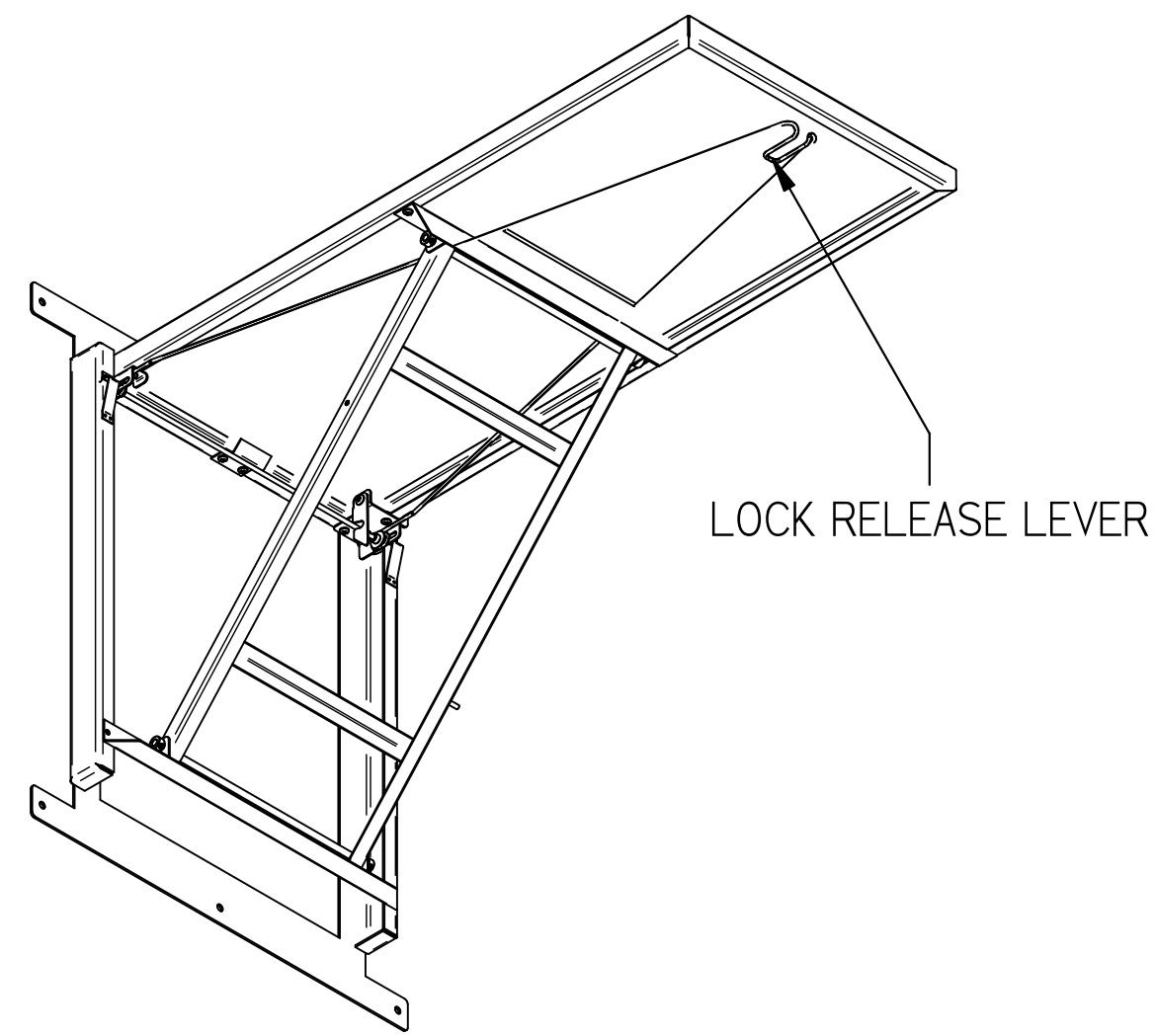
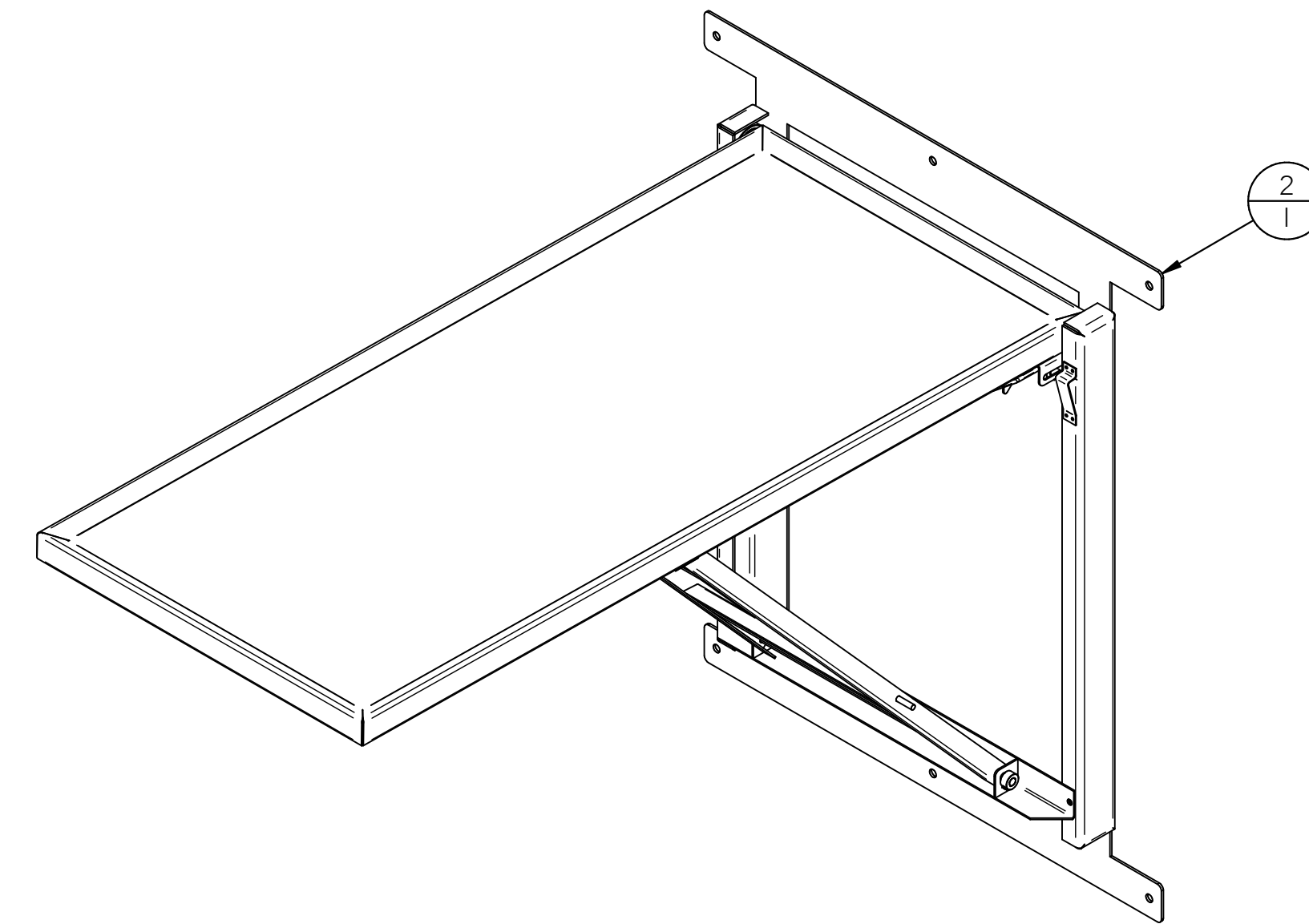
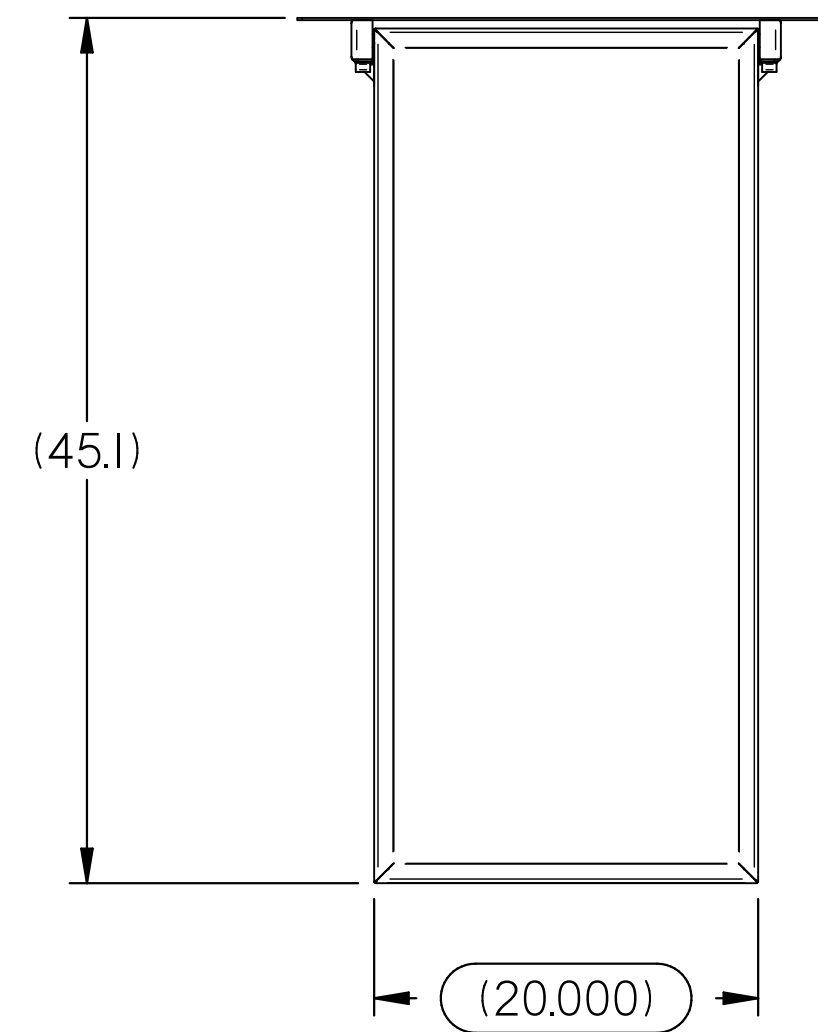


TABLE SHOWN IN FOLDED-UP WORKING POSITION.
TABLE FOLDS DOWN WHEN NOT IN USE.

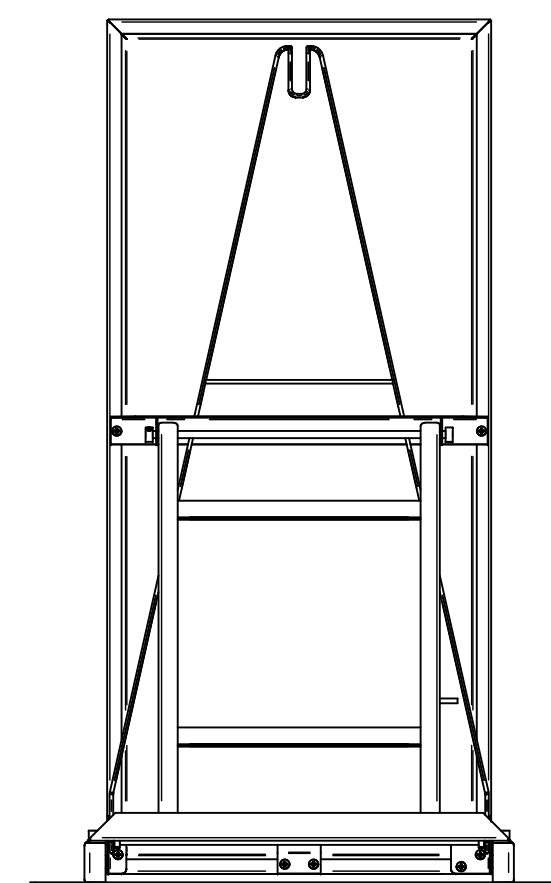
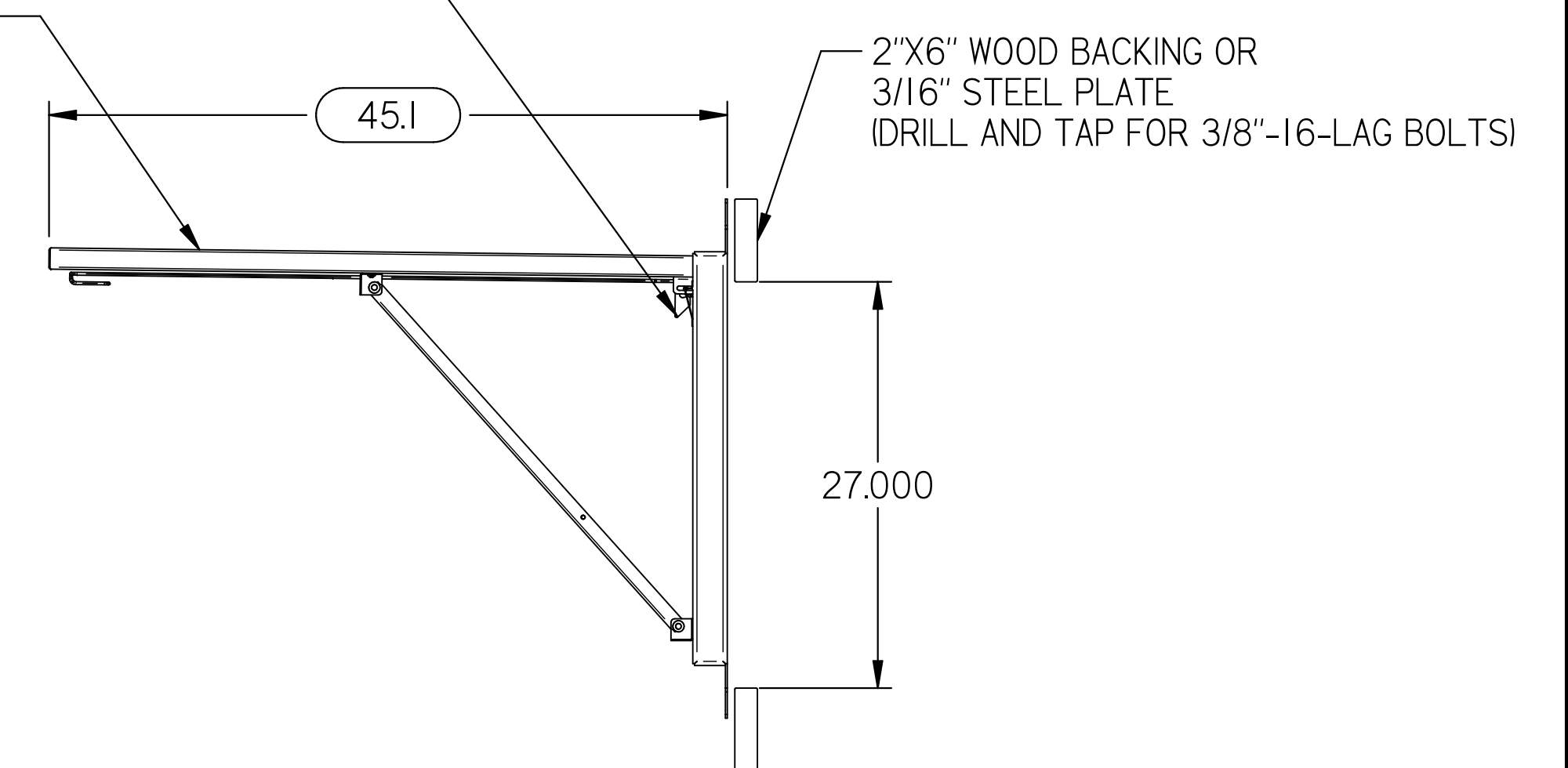
| REV | DESCRIPTION | DATE | ECN # | APPR |
|-----|-----------------|-----------|-------|------|
| A | INITIAL RELEASE | 00-XXX-19 | XXXXX | MM |
| | | | | |
| | | | | |
| | | | | |



FRAME STRUCTURE FABRICATED OF
11GA AND 14 GA TYPE 304 STAINLESS STEEL
WITH #4 SATIN FINISH

WORK SURFACE FABRICATED OF
16GA TYPE 304 STAINLESS STEEL
WITH # 4 SATIN FINISH

LOCKING LATCH TO FOLD TABLE

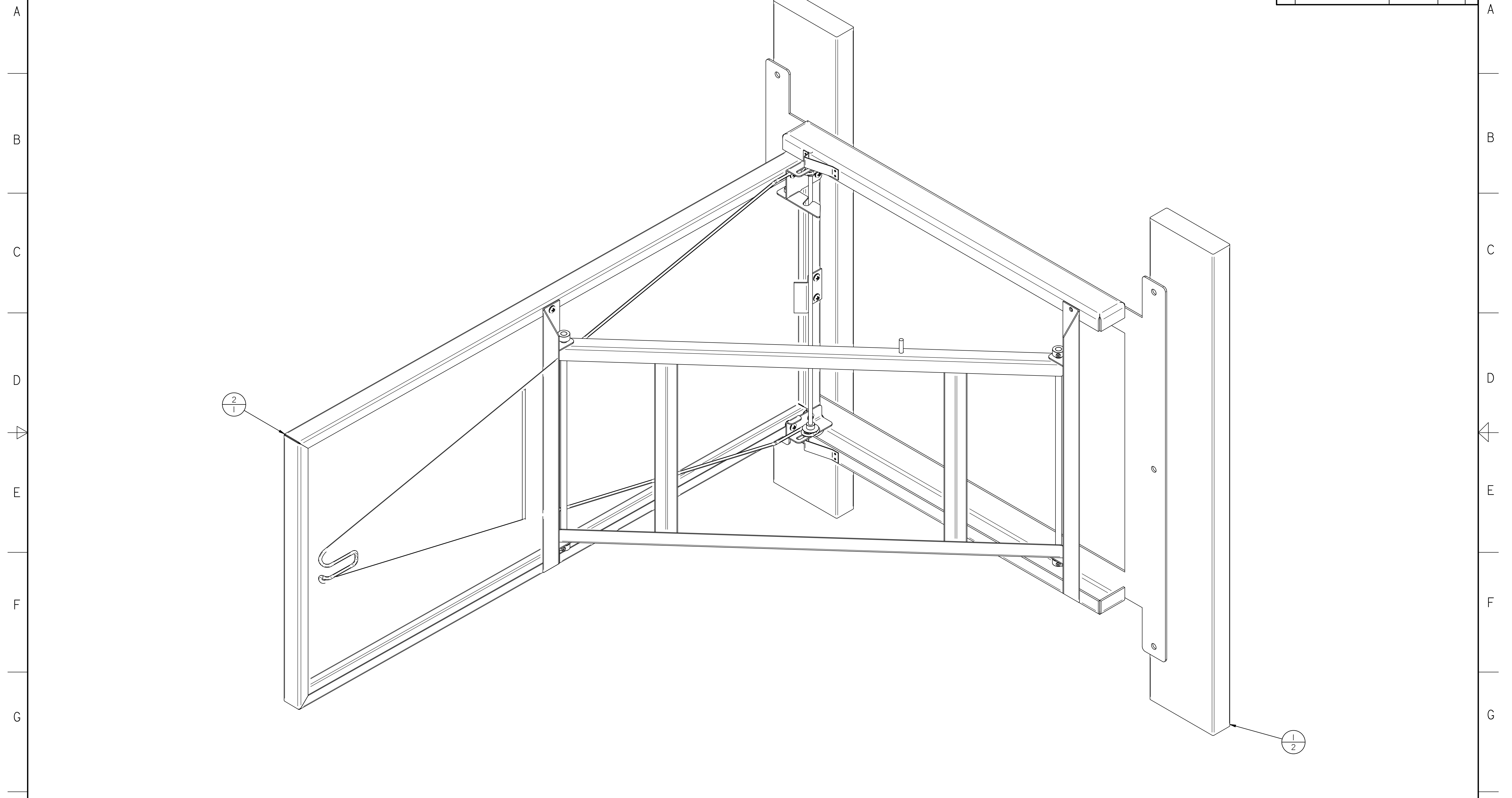


| | | | | | | | |
|--|--|--|---|---|--|---|------------------------|
| THIS DOCUMENT CONTAINS PROPRIETARY INFORMATION OF MOPEC, AND MAY NOT BE COPIED IN WHOLE OR PART, AND NO USE SHALL BE MADE OF IT OTHER THAN FOR WHICH IT HAS BEEN SUBMITTED WITHOUT THE WRITTEN PERMISSION OF A MOPEC MANAGER MOPEC 2021 | | UNLESS OTHERWISE SPECIFIED ALL DIMENSIONS IN INCHES TOLERANCES: 0.0 ± 0.1 in, 0.00 ± 0.05 in, 0.000 ± 0.010 in, 0.0000 ± 0.0010 in, ANGLES ± 0.5° BREAK ALL CORNERS 0.063 X 45°, ALL FILLET RADII R0.063 / 0.125 in, INSPECT OVAL DIMENSIONS | MATERIAL: Error: No reference MATERIAL USAGE: Error: No reference FINISH: Error: No reference | MOPEC GROUP MOPEC MORTECH <small>Equipment Technology MANUFACTURING</small> DRAWN TO 3RD ANGLE PROJECTION | DRAWN BY: jjohnson DATE: 12/22/2021 CHECKED BY: [blank] DATE: 12/22/2021 APPROVED BY: MMcCLAIN DATE: 12/22/2021 | PART NUMBER: CD400-A DESCRIPTION: CD400-A.asm SIZE: A2 FILE NAME: CD400-A.dft SCALE: 1:10 DO NOT SCALE IF IN DOUBT ASK | REV: A SHEET 1 OF 2 |
|--|--|--|---|---|--|---|------------------------|

CD400-A.dft

I 2 3 4 5 6 7 8 9 10 11

| REV | DESCRIPTION | DATE | ECN # | APPR |
|-----|-----------------|-----------|-------|------|
| A | INITIAL RELEASE | 00-XXX-19 | XXXXX | MM |
| | | | | |
| | | | | |
| | | | | |



| Item Number | Quantity | File Name | Title | Material | Rev |
|-------------|----------|--|---------------------|----------|-----|
| 1 | 2 | 2 x 6 WALL SUPPORT CUSTOMER OR FACILITY PROVIDED.par | | | A |
| 2 | 1 | S2337-B.asm | CD400 FOLD-UP TABLE | | B |

THIS DOCUMENT CONTAINS PROPRIETARY INFORMATION OF MOPEC, AND MAY NOT BE COPIED IN WHOLE OR PART, AND NO USE SHALL BE MADE OF IT OTHER THAN FOR WHICH IT HAS BEEN SUBMITTED WITHOUT THE WRITTEN PERMISSION OF A MOPEC MANAGER

MOPEC 2021

UNLESS OTHERWISE SPECIFIED ALL DIMENSIONS IN INCHES

TOLERANCES

| | |
|--------|-------------|
| 0.0 | ± 0.1 in |
| 0.00 | ± 0.05 in |
| 0.000 | ± 0.010 in |
| 0.0000 | ± 0.0010 in |
| ANGLES | ± 0.5° |

BREAK ALL CORNERS 0.063 X 45°
ALL FILLET RADII R0.063 / 0.125 in
INSPECT OVAL DIMENSIONS

MATERIAL

MATERIAL USAGE

Error: No reference

FINISH

Error: No reference

MOPEC GROUP

MOPEC MORTECH

DRAWN TO 3RD ANGLE PROJECTION

DRAWN BY: jjohnson
DATE: 12/22/2021

CHECKED BY: _____
DATE: 12/22/2021

APPROVED BY: M. McClain
DATE: 12/22/2021

| | |
|------------------------------|-------------|
| PART NUMBER | CD400-A |
| DESCRIPTION | CD400-A.asm |
| SIZE | A2 |
| FILE NAME | CD400-A.dft |
| SCALE | 1:2.86 |
| DO NOT SCALE IF IN DOUBT ASK | |
| SHEET | 2 OF 2 |

I 2 3 4 5 6 7 8 9 10 11

CD400-A.dft