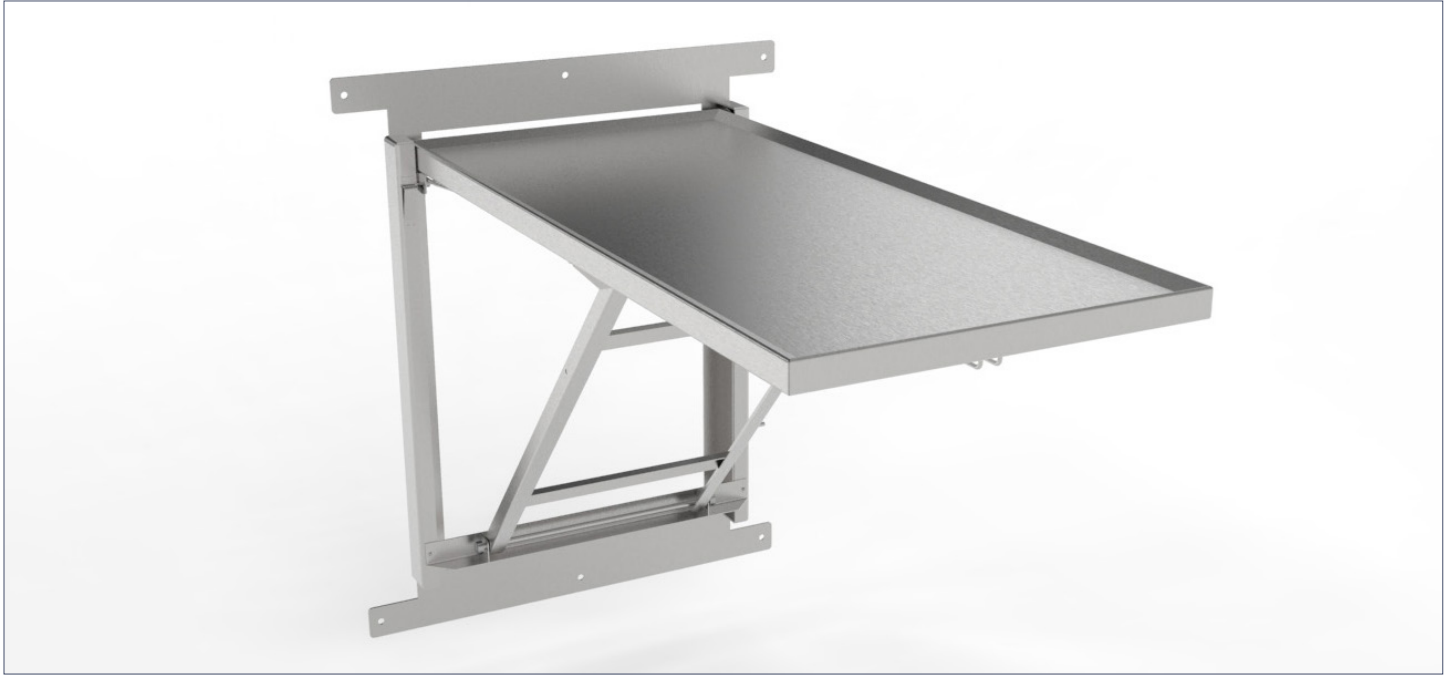


# Fold-Up Wall-Mount Table

Maximize efficiency without sacrificing functionality with the Mopec CD400 Fold-Up Wall-Mounted Table. Designed for compact workspaces, this durable stainless steel table provides a sturdy, easy-to-clean surface for a variety of applications. When not in use, it conveniently folds up against the wall, freeing up valuable space. Ideal for environments with limited space, the CD400 ensures seamless workflow optimization while maintaining Mopec's commitment to quality, safety, and innovation.



## SPECIFICATIONS

### Construction

- Heliarc-welded seams and joints, ground and polished to match adjoining surfaces

### Materials

- 304 stainless steel construction with a polished No. 4 finish

### Performance

- One-handed operation
- Compact work area
- Marine edge for fluid control
- Release handle unlocks table from a folded position to a 90° horizontal position

### Dimensions

- 45.1" L x 20" W x 34.5" H

### Capacity

- 150 lbs

## Related/Alternate/Obsolete Product Model Numbers

Model No.	Description	Status	Notes
CD500	Fold-Up Wall-Mount Table, Height Adjustable	Obsolete	Use CD400
1036-274	Folding Exam Table	Replaced	Use CD400
1036-274A	Folding Exam Table, Height Adjustable	Obsolete	Use CD400

**MOPEC**  
GROUP

**Mopec**  
ELEVATING PATHOLOGY

**MORTECH**  
MANUFACTURING

[www.mopecgroup.com](http://www.mopecgroup.com)

800.362.8491

800 Tech Row, Madison Heights, MI